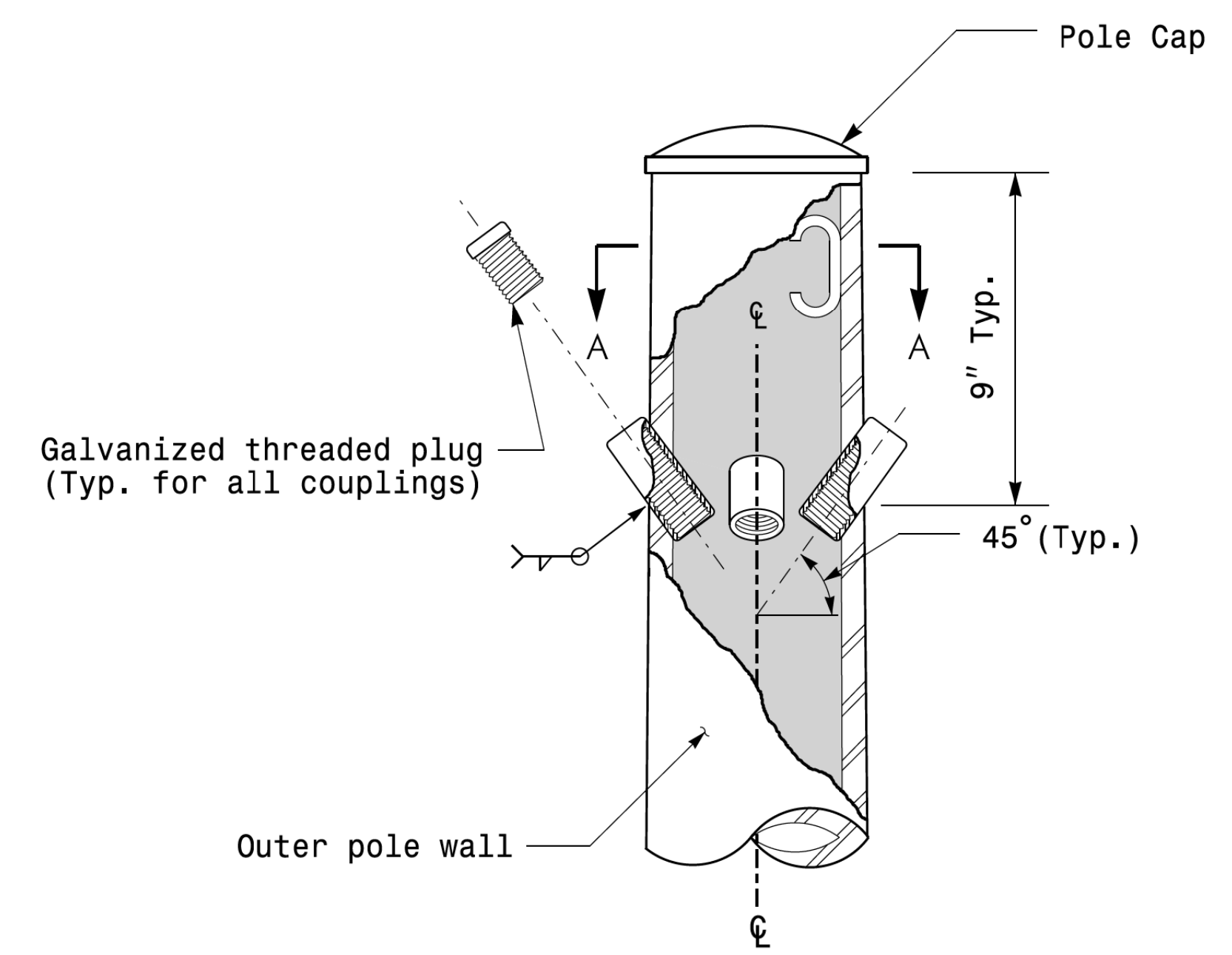
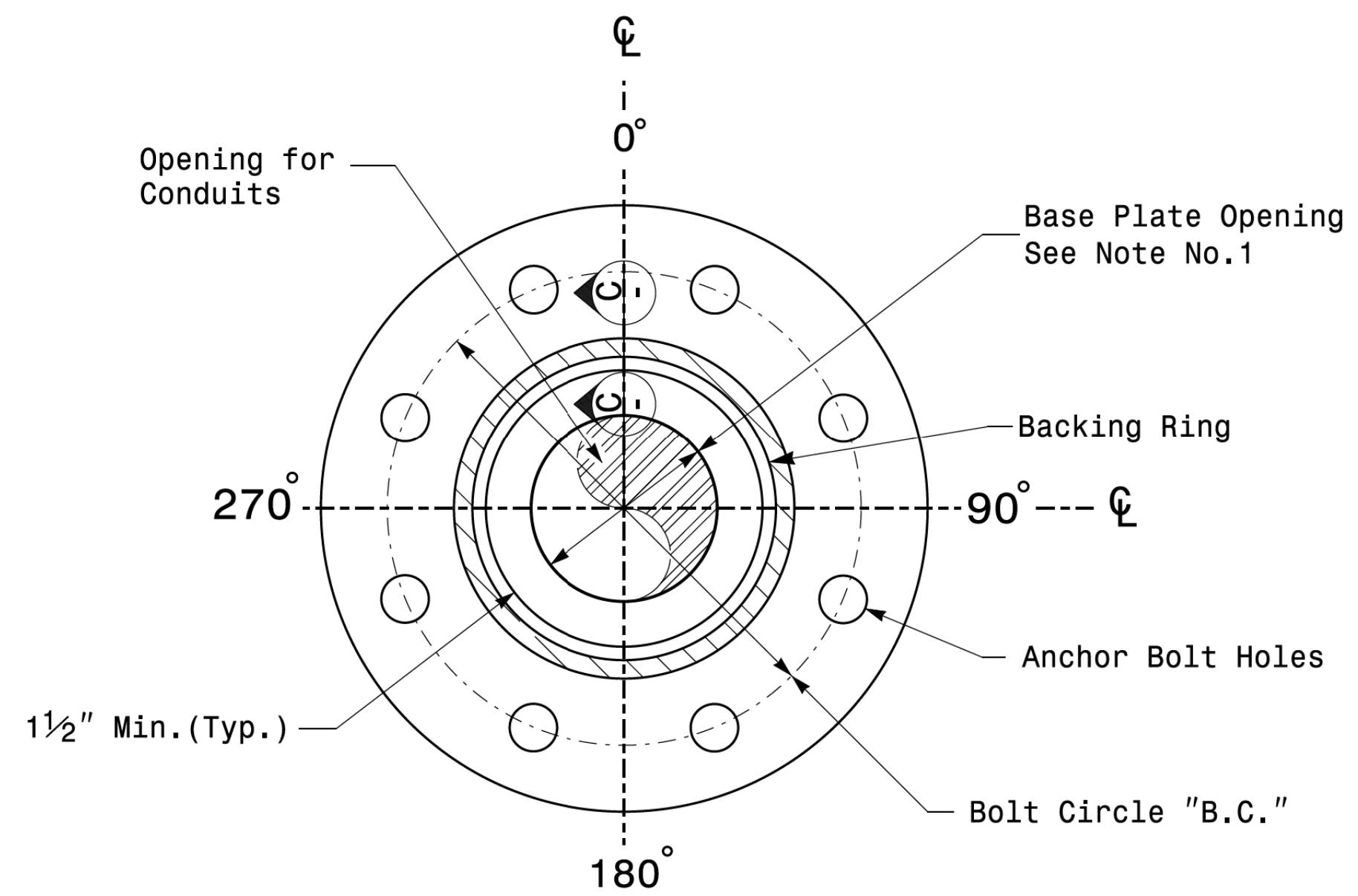


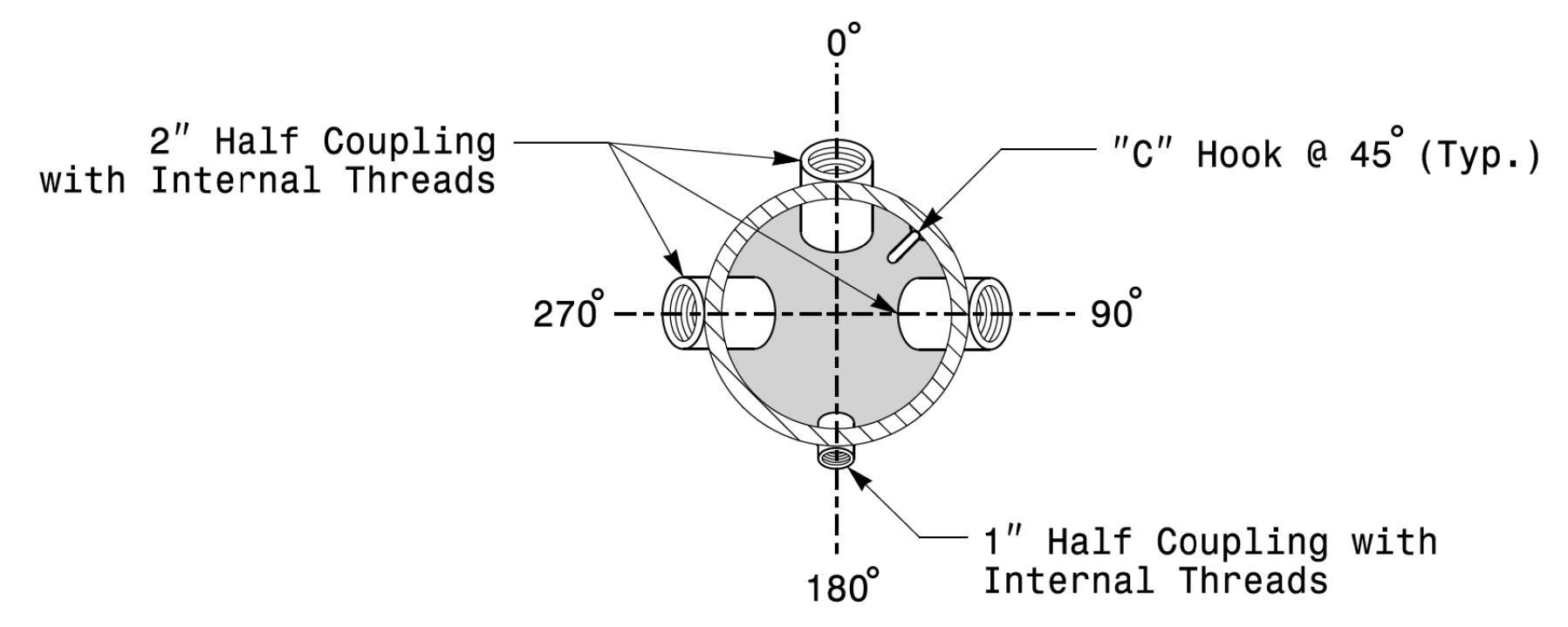
Note:
 1. Opening in pole base plate shall be equal to pole base inside diameter minus 3 1/2" but shall not be less than 8 1/2".



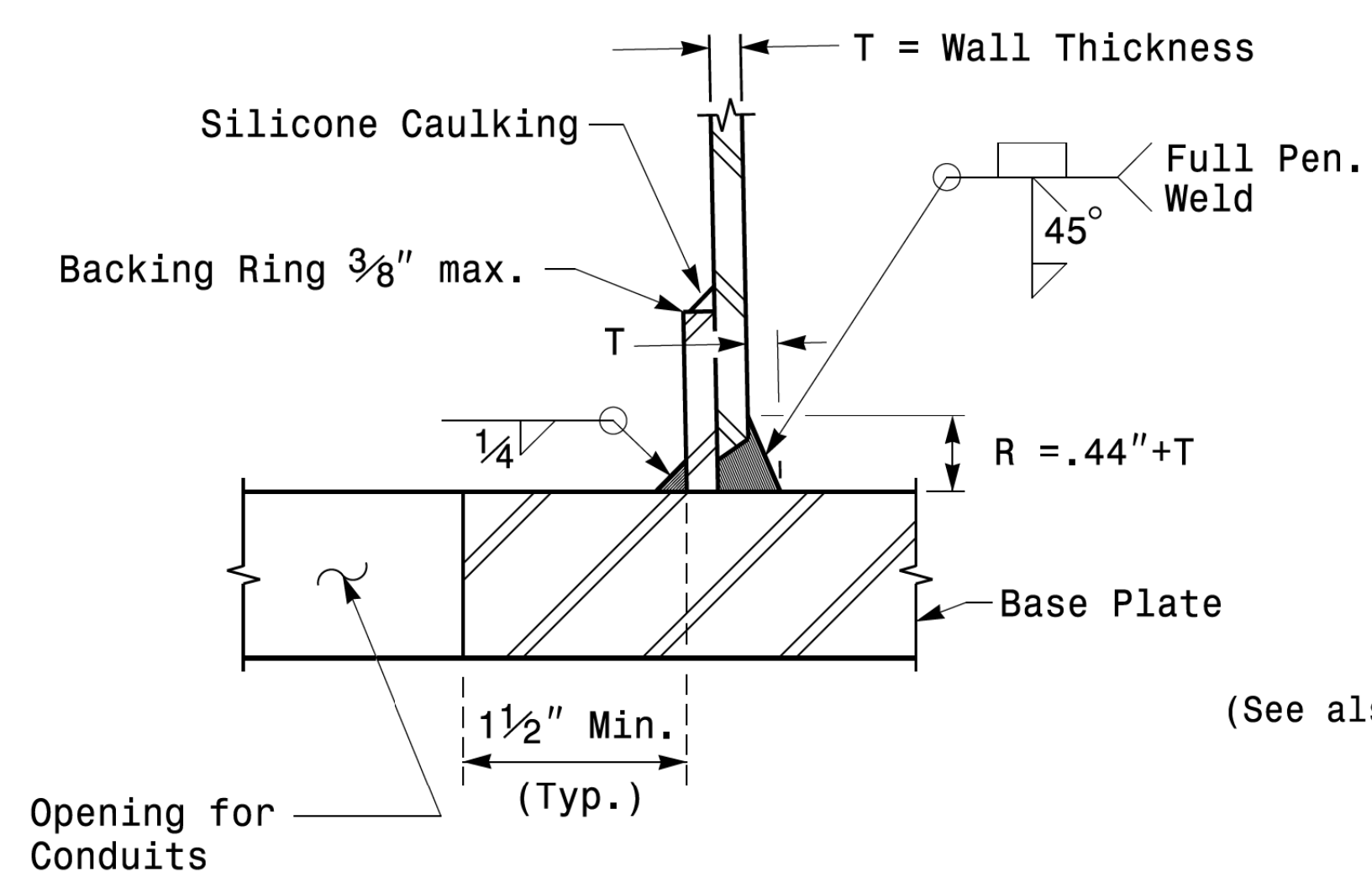
Cable Entrances at Top of Pole



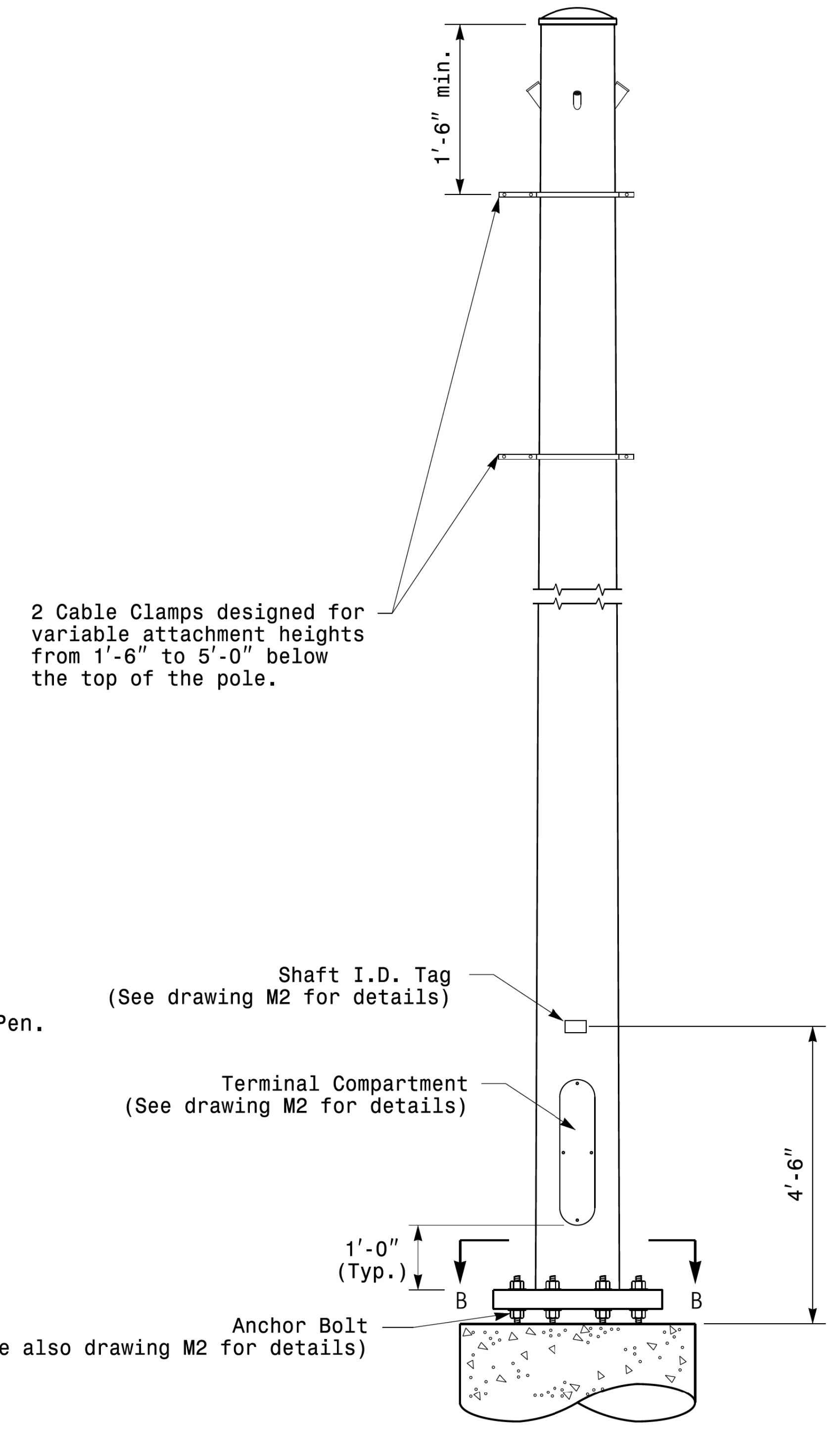
Section B-B
Pole Base Plate Details
(8 and 12 Bolt Pattern)



Section A-A
Radial Orientation for Factory Installed
Accessories at Top of Pole



Section C-C
(Pole Attachment to Base Plate)
Full-Penetration
Groove Weld Detail



Monotube Strain Pole

11-01-2017 08:25
 P:\13560\115 Signal\sig1 Design Section\Eastern Region\MT Sheets\2016\2014 Sig.M3 Std. Fabrication Details-Strain Poles.dgn
 P:\13560\115 Signal\sig1 Design Section\Eastern Region\MT Sheets\2016\2014 Sig.M3 Std. Fabrication Details-Strain Poles.dgn

<p>Prepared in the Offices of: TRANSPORTATION MOBILITY AND SAFETY DIVISION STATE OF NORTH CAROLINA SIGNAL DESIGN SECTION 750 N. Greenfield Pkwy, Garner, NC 27529</p>	Typical Fabrication Details For Strain Poles		
	PLAN DATE: OCTOBER 2017 DESIGNED BY: K.C. DURIGON	PREPARED BY: N. BITTING REVIEWED BY: D.C. SARKAR	
SCALE: NONE	REVISIONS	INIT. DATE	SEAL NORTH CAROLINA PROFESSIONAL ENGINEER SEAL 028094 DEBESH C. SARKAR DocuSigned by: Debesh C. Sarkar 44EBE37819A74E
			10/11/2017 DATE

Fabrication Details – Strain Poles