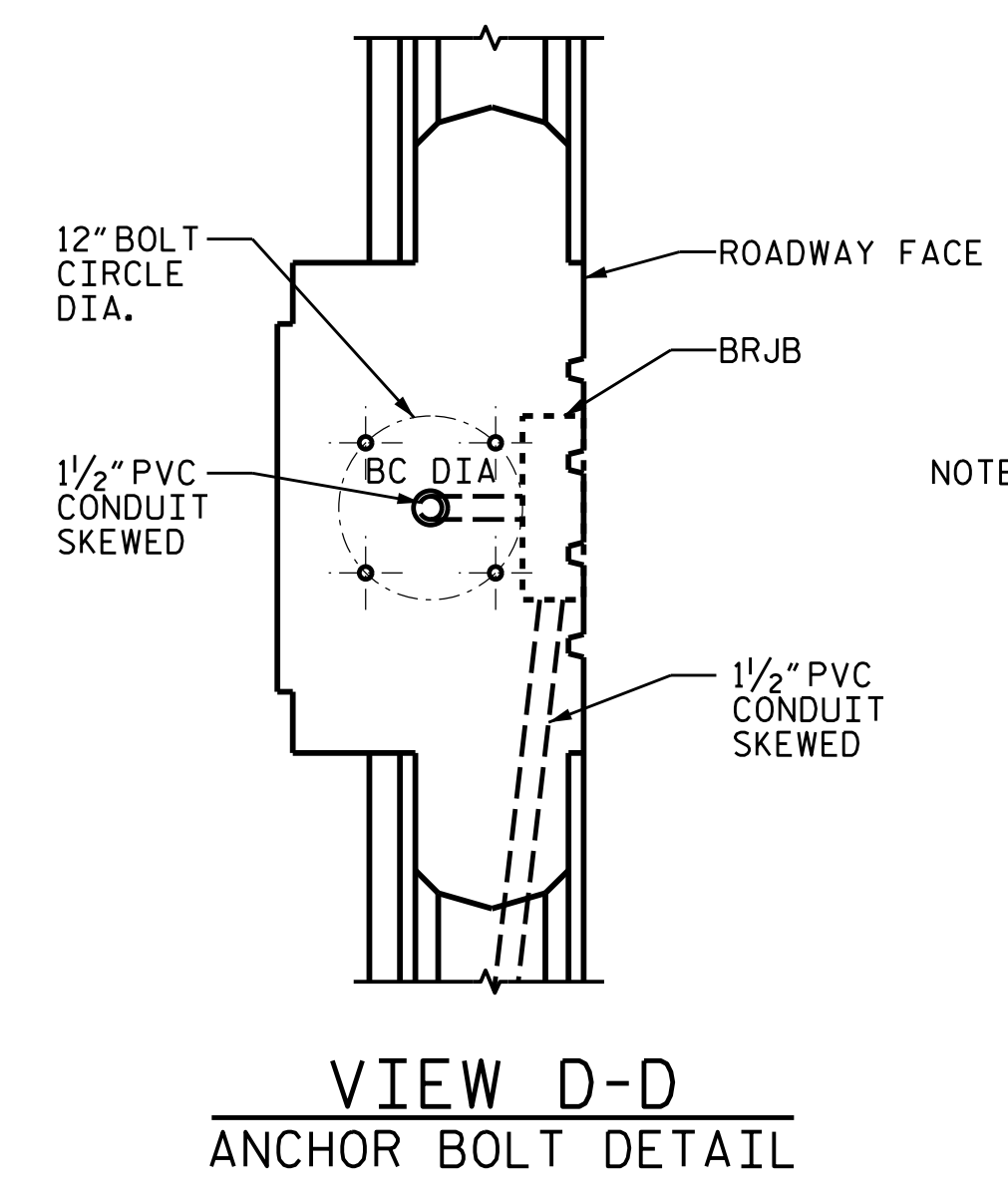
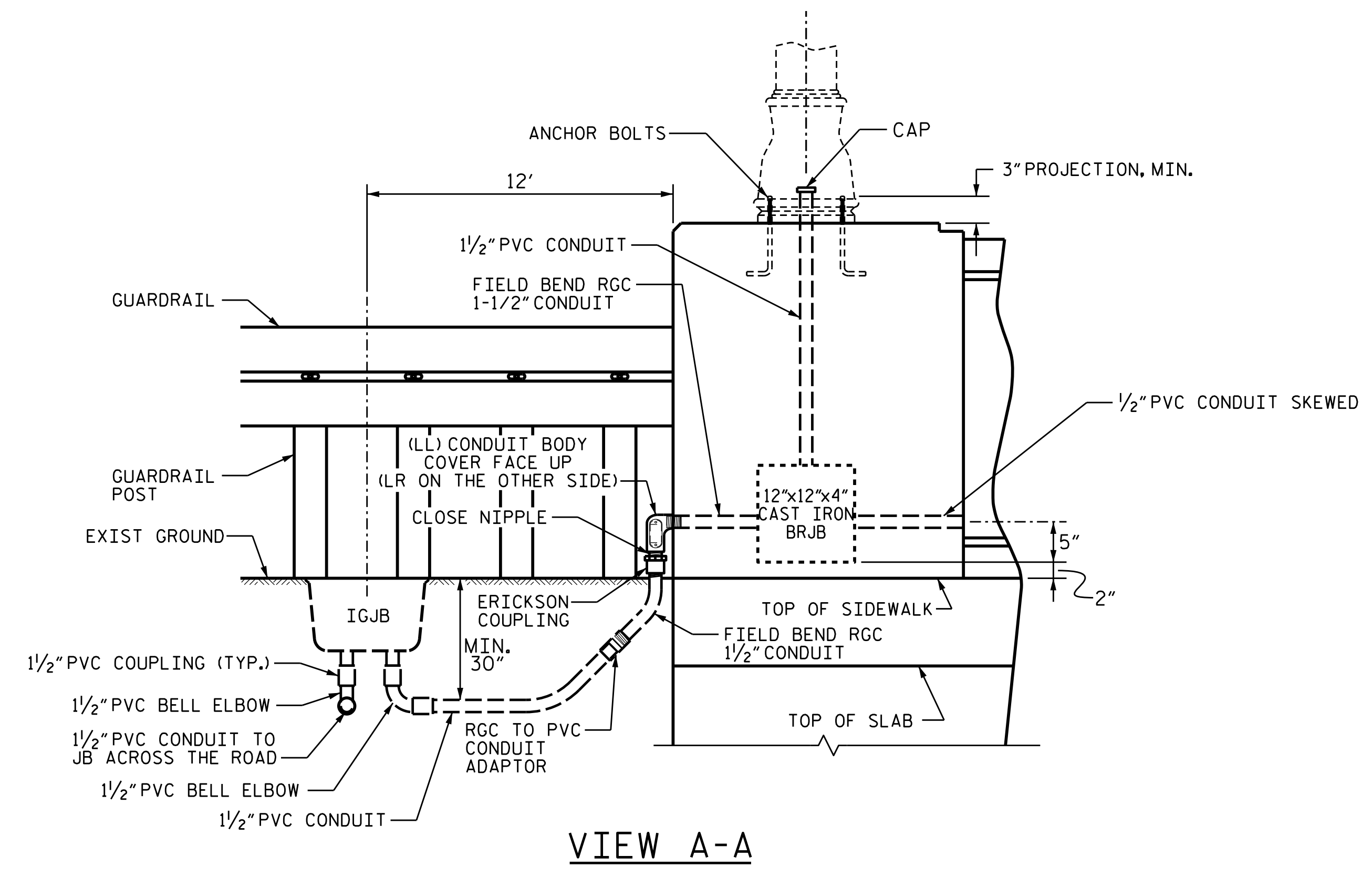
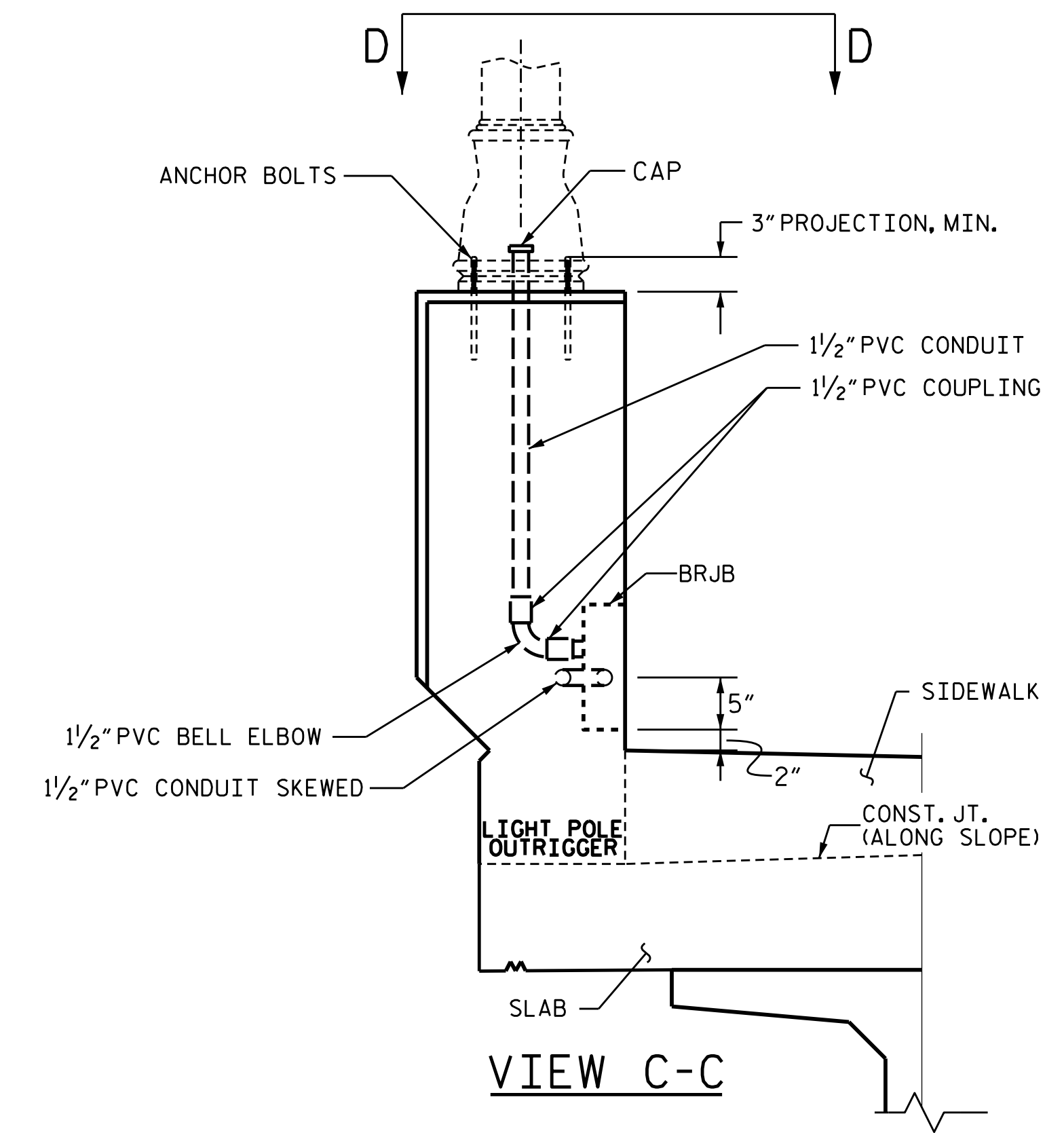
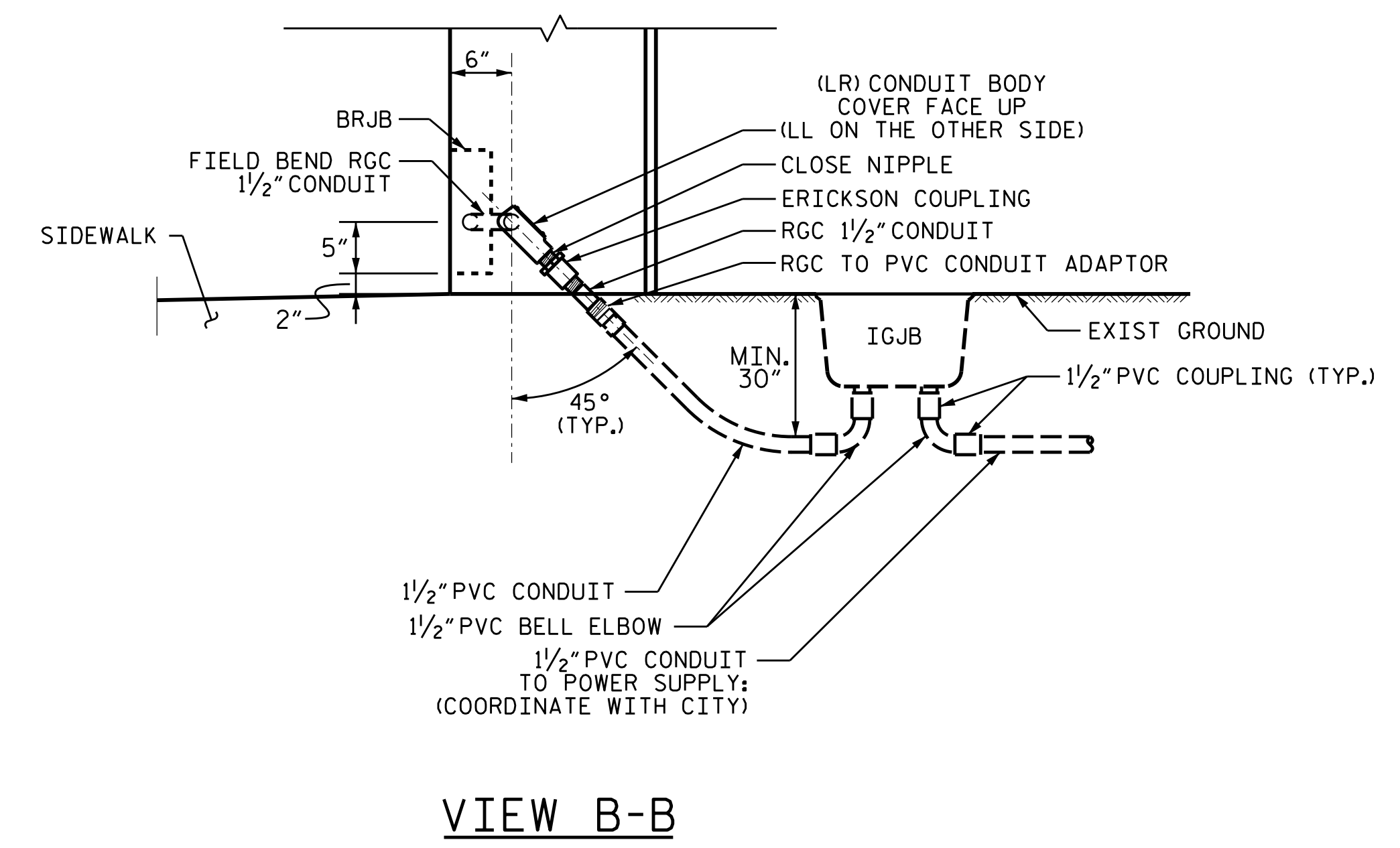


02/03/98



NOTE: ANCHOR BOLTS SHALL BE 3/4" HOT DIPPED GALVANIZED STEEL WITH A HOOKED END AND MINIMUM 6" THREADING. ANCHOR BOLT LENGTH SHALL BE 19", MINIMUM, AND SHALL BE INSTALLED WITH A MINIMUM 3" PROJECTION. PROVIDE LEVELING NUT AND WASHER, AND MOUNTING NUT AND WASHER WITH EACH ANCHOR BOLT.



PROJECT NO. B-5985A
ROBESON COUNTY
 STATION: 23+56.00 -L1-

SHEET 2 OF 2

STATE OF NORTH CAROLINA
 DEPARTMENT OF TRANSPORTATION
 RALEIGH
 BRIDGE #125 OVER LUMBER RIVER ON
 NC 72 E. (W. 2ND. STREET) BETWEEN
 MARTIN LUTHER KING, JR. DRIVE
 AND N. WATER STREET

REVISIONS						TOTAL SHEETS
NO.	BY:	DATE:	NO.	BY:	DATE:	

DRMP
 DRMP NC, INC.
 4235 SOUTH STREAM BLVD., SUITE 150
 CHARLOTTE, NORTH CAROLINA 28217
 (704) 332-2289
 NC LICENSE NO. C-4923

DocuSigned by:
 Christopher Kent
 SEAL
 019740
 ENGINEER
 CHRISTOPHER KENT
 2/8/2023

DOCUMENT NOT CONSIDERED FINAL
 UNLESS ALL SIGNATURES COMPLETED

2/8/2023 R:\B5985A\Lighting\Electrical\Lighting Design Files\B5985A.LTG\Bridge_No.125.dgn
 A.Davis

DRAWN BY : ADAM DAVIS DATE : 12/2022
 CHECKED BY : CHRIS HAIRE DATE : 12/2022
 DESIGN ENGINEER OF RECORD: CHRIS HAIRE DATE : 12/2022