

2022	N. WATERS ST.			
2042	10500	8500	420	2200
	14200	11200	510	3000
	(-L-) SR 1600	400	140	W. 5TH ST.
		850	320	
			2200	N. WATERS ST.
			2900	

-L-
 PI Sta 17+10.16
 $\Delta = 11^{\circ} 32' 05.1" (LT)$
 $D = 4^{\circ} 30' 00.0"$
 $L = 256.33'$
 $T = 128.60'$
 $R = 1,273.24'$

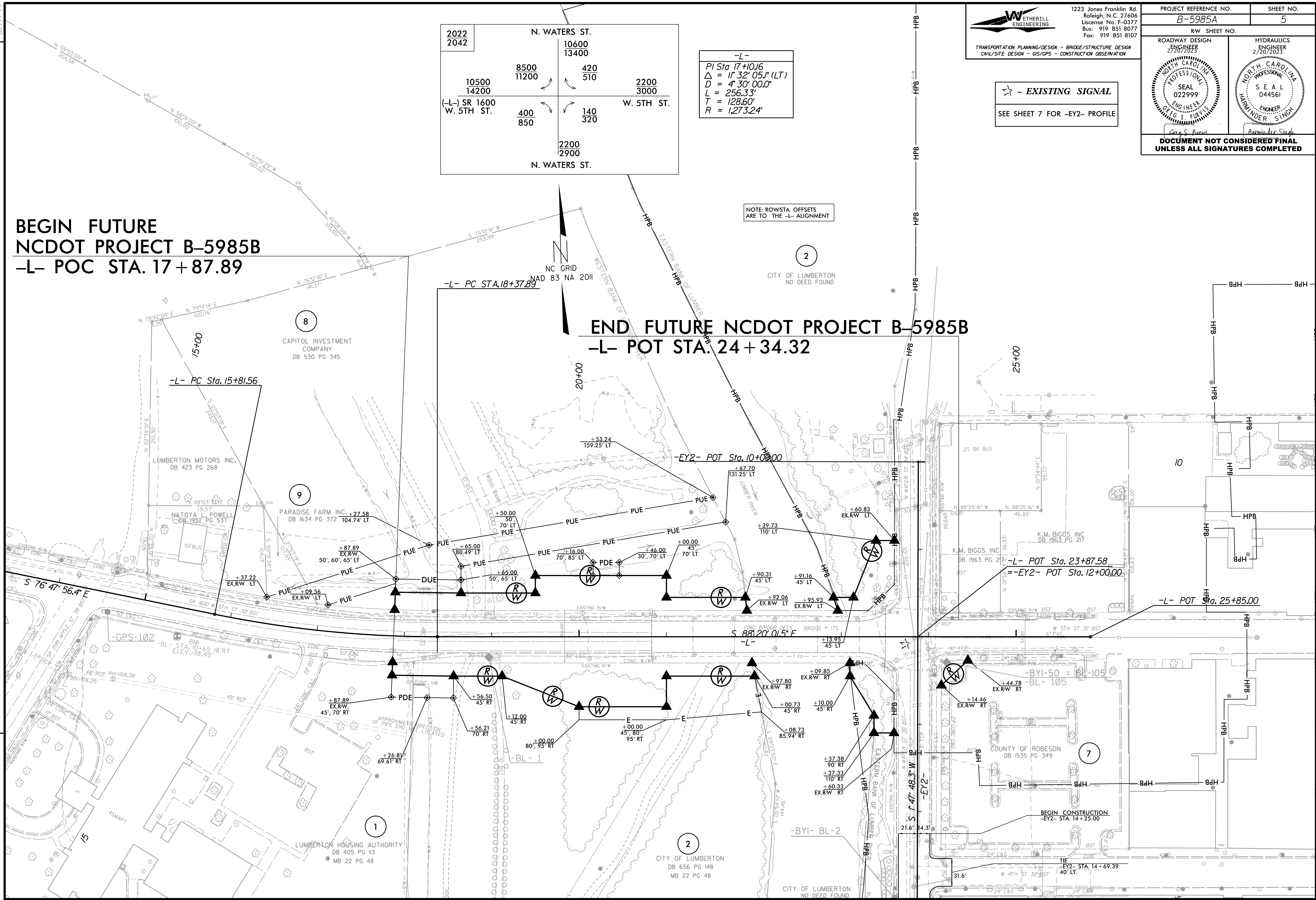
☆ - EXISTING SIGNAL
 SEE SHEET 7 FOR -EY2- PROFILE

NOTE: ROWSTA. OFFSETS ARE TO THE -L- ALIGNMENT

**BEGIN FUTURE
 NCDOT PROJECT B-5985B
 -L- POC STA. 17+87.89**

**END FUTURE NCDOT PROJECT B-5985B
 -L- POT STA. 24+34.32**

REVISIONS



MATCHLINE SHEET 4 -EY2- STA. 15+00.00