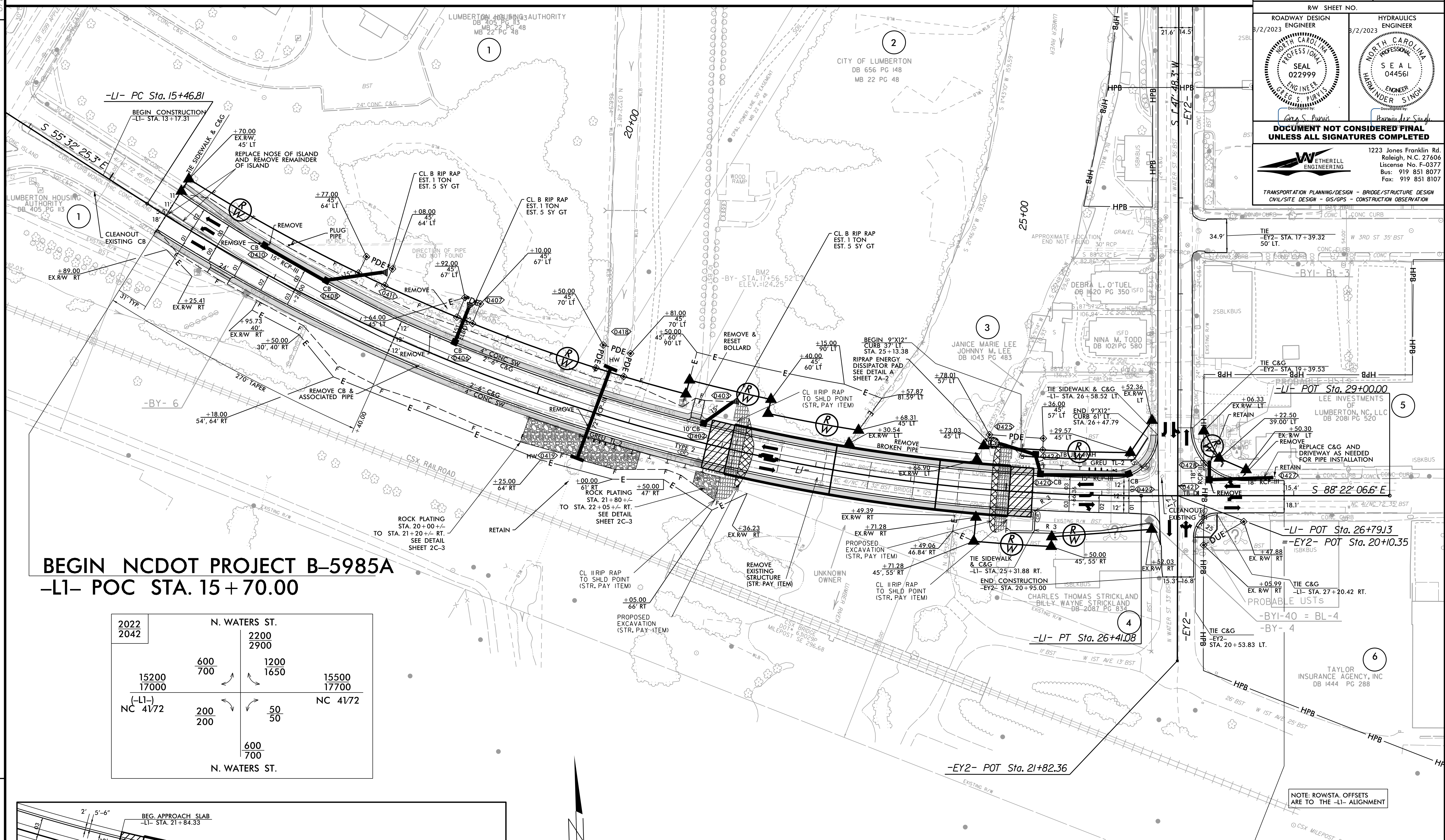
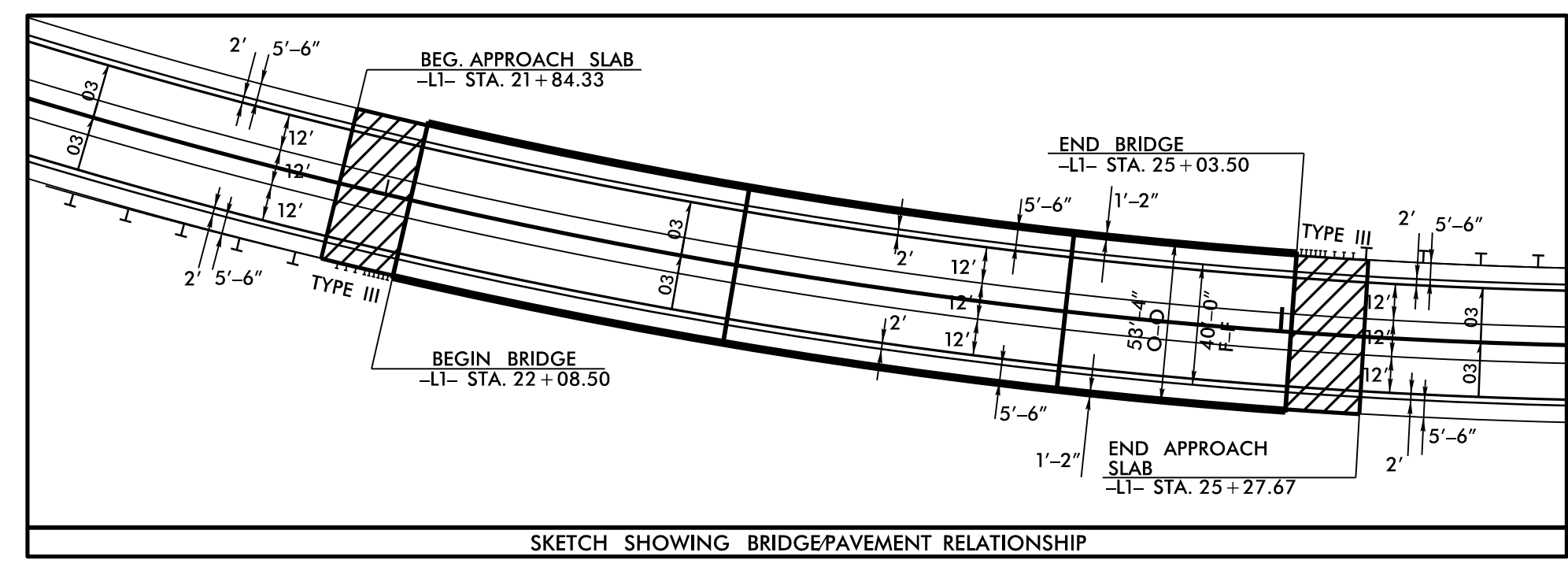


PROJECT REFERENCE NO. B-5985A		SHEET NO. 4	
RW SHEET NO.			
ROADWAY DESIGN ENGINEER 3/2/2023		HYDRAULICS ENGINEER 3/2/2023	
DOCUMENT NOT CONSIDERED FINAL UNLESS ALL SIGNATURES COMPLETED			
		1223 Jones Franklin Rd. Raleigh, N.C. 27606 License No. F-0377 Bus: 919 851 8077 Fax: 919 851 8107	
TRANSPORTATION PLANNING/DESIGN - BRIDGE/STRUCTURE DESIGN CIVIL/SITE DESIGN - GIS/GPS - CONSTRUCTION OBSERVATION			



BEGIN NCDOT PROJECT B-5985A
-LI- POC STA. 15 + 70.00

2022	N. WATERS ST.		2200
2042	2900		2900
15200	600	1200	15500
17000	700	1650	17700
(-LI-)			NC 41/72
NC 41/72	200	50	NC 41/72
	200	50	
	N. WATERS ST.		
	600	700	



NC GRID
NAD 83 NA 2011

-LI-
 PI Sta 21+09.42
 $\Delta = 32^\circ 49' 41.4" (LT)$
 $D = 3^\circ 00' 00.0"$
 $L = 1094.27'$
 $T = 562.61'$
 $R = 1909.86'$
 $SE = .03$
 $RO = SEE PLANS$
 $DS = 40MPH$

END NCDOT PROJECT B-5985A
-LI- POT STA. 27 + 90.00

NOTE: ROW/STA. OFFSETS ARE TO THE -LI- ALIGNMENT

☆ - EXISTING SIGNAL
 SEE SHEET 6 FOR -LI- PROFILE
 SEE SHEET 7 FOR -EY2- PROFILE
 SEE SHEETS S-1 THRU S-49 FOR STRUCTURE PLANS
 SEE SHEET 2B-1 FOR INT. DETAIL

NOTE: SEE RAILROAD AGREEMENT FOR MORE INFORMATION ON EASEMENT WITHIN RAILROAD RIGHT OF WAY

REVISIONS

3/2/2023 B-5985A_rdy_PSH_4.dgn