

6/2/2023

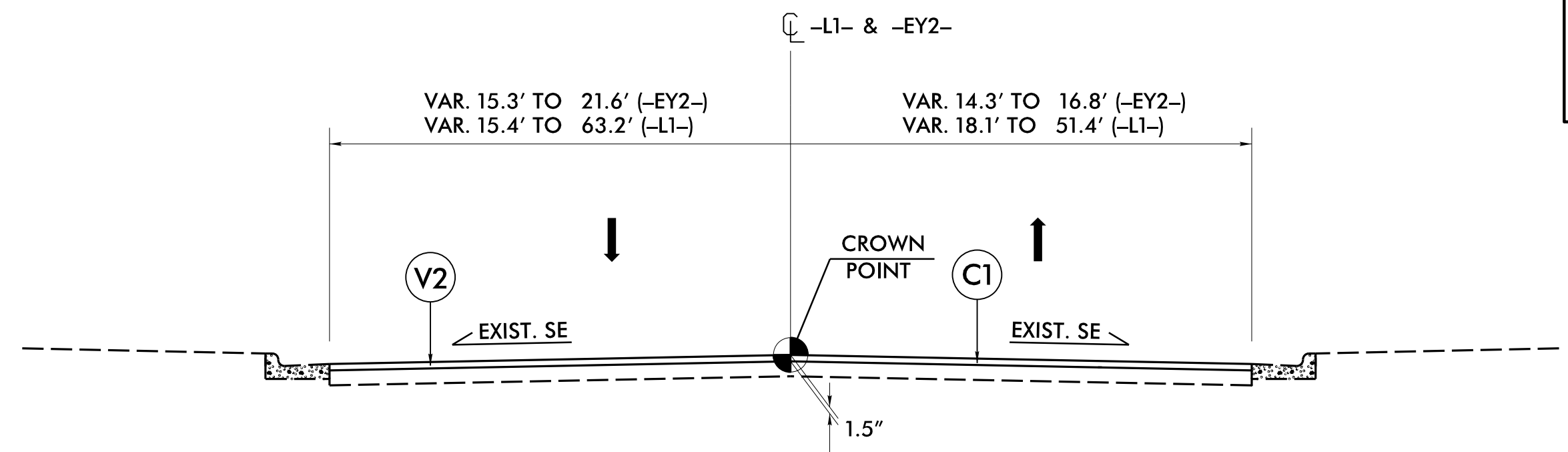
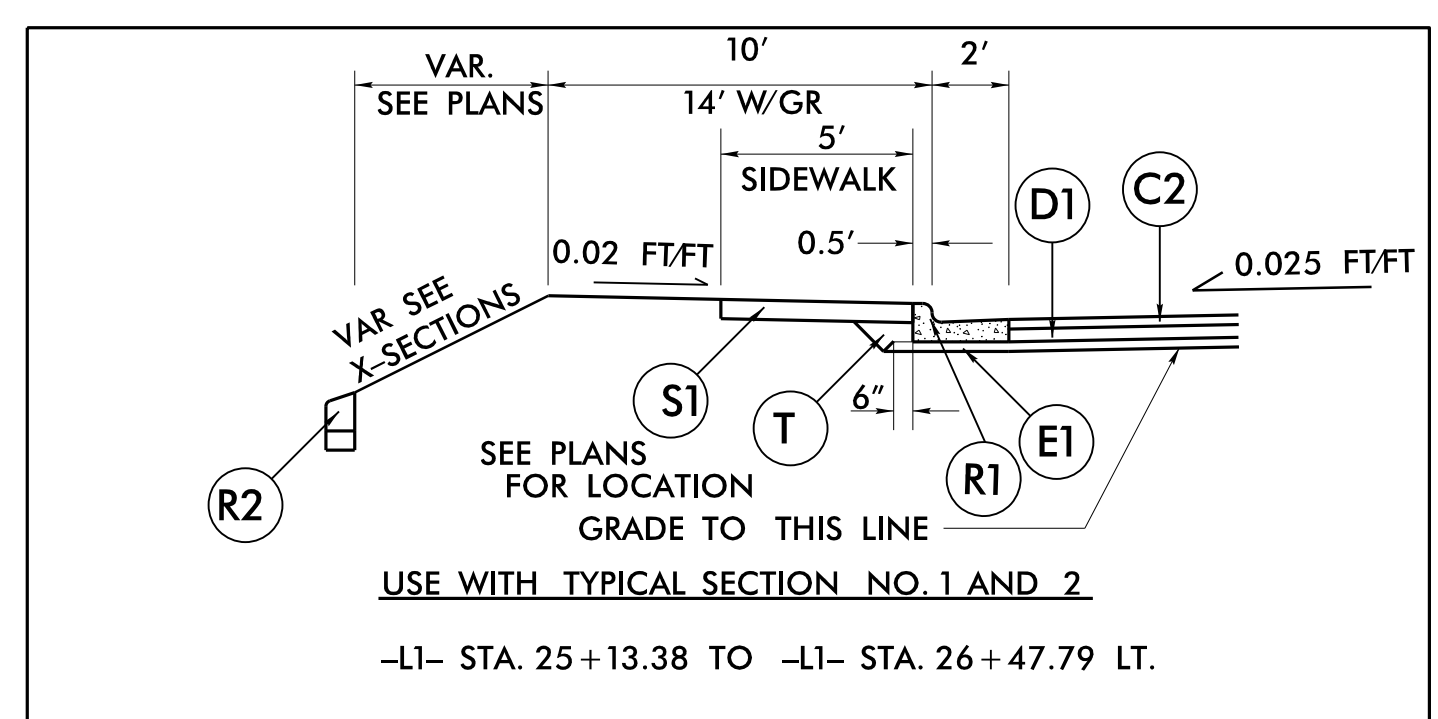
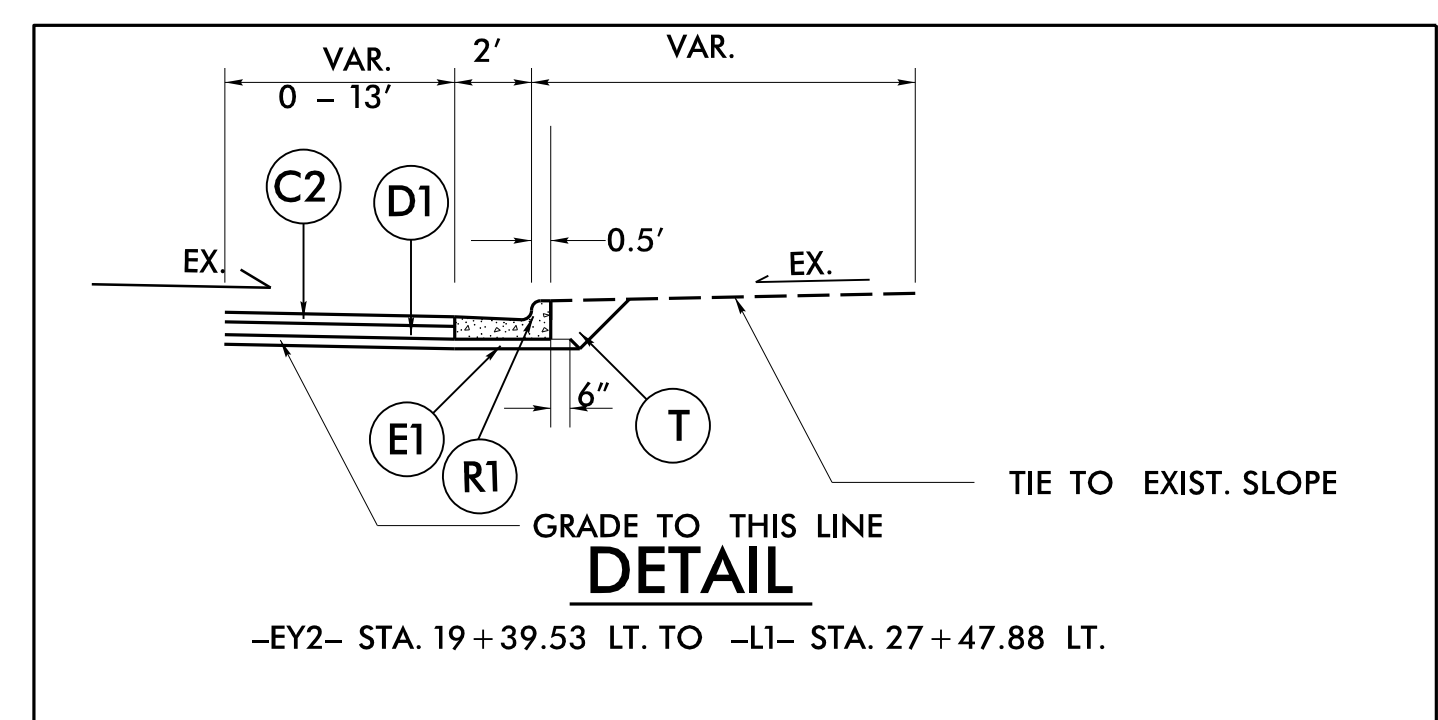
**WETHERILL ENGINEERING**  
 1223 Jones Franklin Rd.  
 Raleigh, N.C. 27606  
 License No. F-0377  
 Bus: 919 851 8077  
 Fax: 919 851 8107

TRANSPORTATION PLANNING/DESIGN - BRIDGE/STRUCTURE DESIGN  
 CIVIL/SITE DESIGN - GIS/GPS - CONSTRUCTION OBSERVATION

HYDRAULIC DESIGN ENGINEER 2/20/2023 NORTH CAROLINA PROFESSIONAL SEAL 044561 AMINDER SINGH	ROADWAY DESIGN ENGINEER 2/20/2023 NORTH CAROLINA PROFESSIONAL SEAL 022999 GREG S. PUNTSIS	PAVEMENT DESIGN ENGINEER 2/21/2023 NORTH CAROLINA PROFESSIONAL SEAL 22896 CLARK S. HARRISON
---	---	---

PROJECT REFERENCE NO. **B-5985A** SHEET NO. **2A-2**

**DOCUMENT NOT CONSIDERED FINAL UNLESS ALL SIGNATURES COMPLETED**



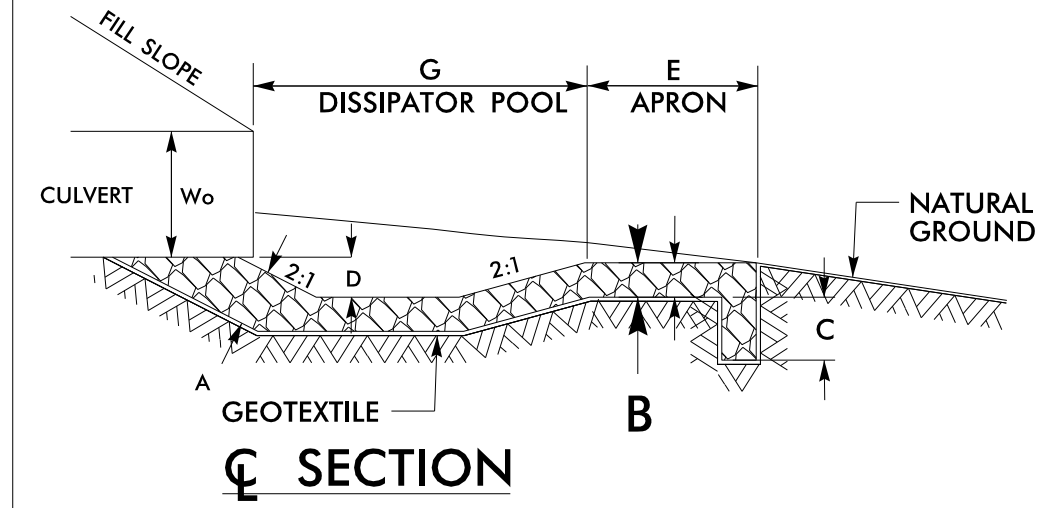
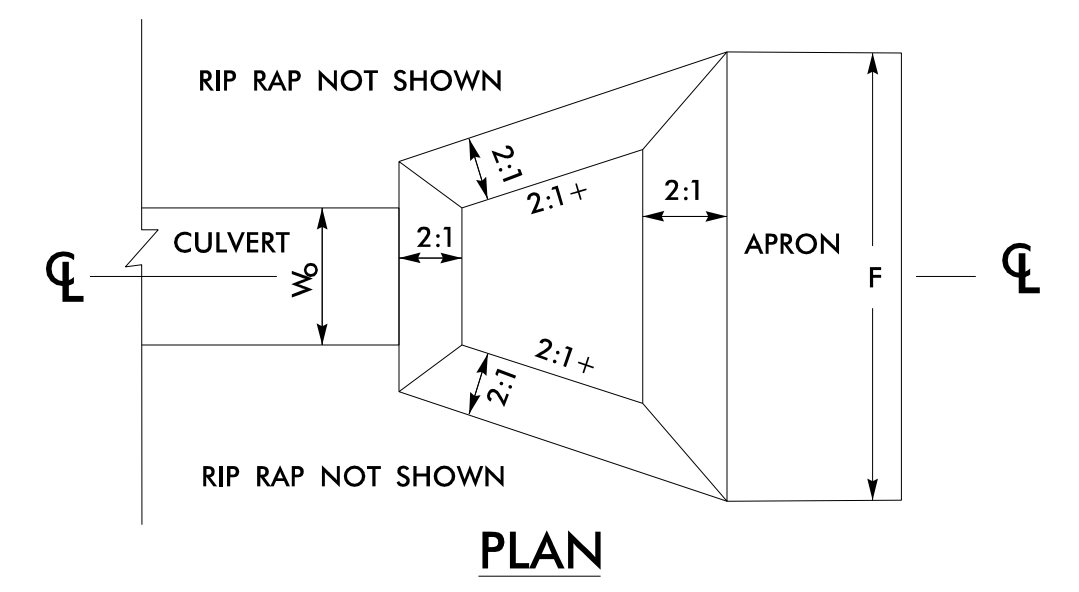
**TYPICAL SECTION NO. 3**  
 -EY2- STA. 14+25.00 TO -EY2- STA. 20+95.00  
 -L1- STA. 27+02.01 TO -L1- STA. 27+90.00

PAVEMENT SCHEDULE	
FINAL PAVEMENT DESIGN	
C1	1 1/2" S9.5C
C2	3" S9.5C
C3	VAR. S9.5C
D1	4" I19.0C
D2	VAR. I19.0C
E1	4" B25.0C
E2	VAR. B25.0C
R1	2'-6" C & G
R2	9"x12" CONC. CURB
S1	4" SIDEWALK
T	EARTH MATERIAL
U	EXIST. PAVEMENT
V1	0 TO 1 1/2" MILLING
V2	1 1/2" MILLING
W1	WEDGING

**DETAIL A**  
**CLASS I RIP-RAPPED ENERGY DISSIPATOR BASIN**

DIM. (ft)	BASIN # 1	BASIN # 2
A	1.25	1.25
B	1	1
C	1	1
D	0.5	0.5
E	3	3
F	10	10
G	4	4

ALL DIMENSIONS APPROXIMATE



BASIN #	LOCATION (AT OUTLET)
1	24+90 -L1- LT
12 TONS CL. I RR 7 20 SY GEO	

2/18/2023 8:59:55A\_rdy\_psh\_2A-2.dgn