

09_05/2019

See Sheet 1A For Index of Sheets
See Sheet 1B For Conventional Symbols

STATE OF NORTH CAROLINA
DIVISION OF HIGHWAYS

ROBESON COUNTY

LOCATION: BRIDGE NO. 770125 OVER LUMBER RIVER ON NC 41/72

TYPE OF WORK: GRADING, DRAINAGE, SIGNALS, PAVING & STRUCTURES

STATE	STATE PROJECT REFERENCE NO.	SHEET NO.	TOTAL SHEETS
N.C.	B-5985A	1	
STATE PROJ. NO.	F.A. PROJ. NO.	DESCRIPTION	
47749.1.2	4774901	PE	
47749.2.1	0041115	ROW	
47749.2.2	0041115	UTILITY	
47749.3.2	4774901	CONST.	

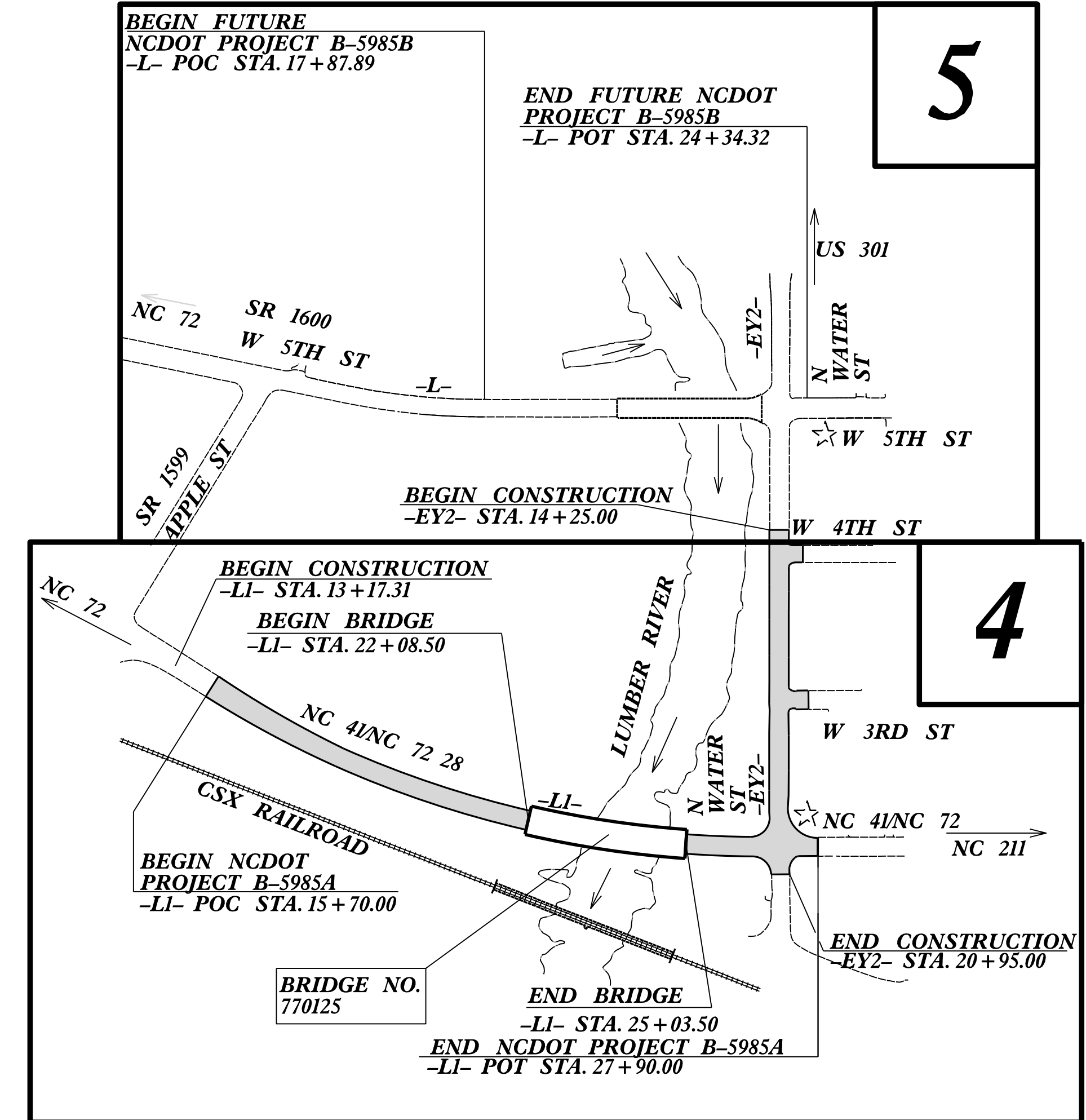
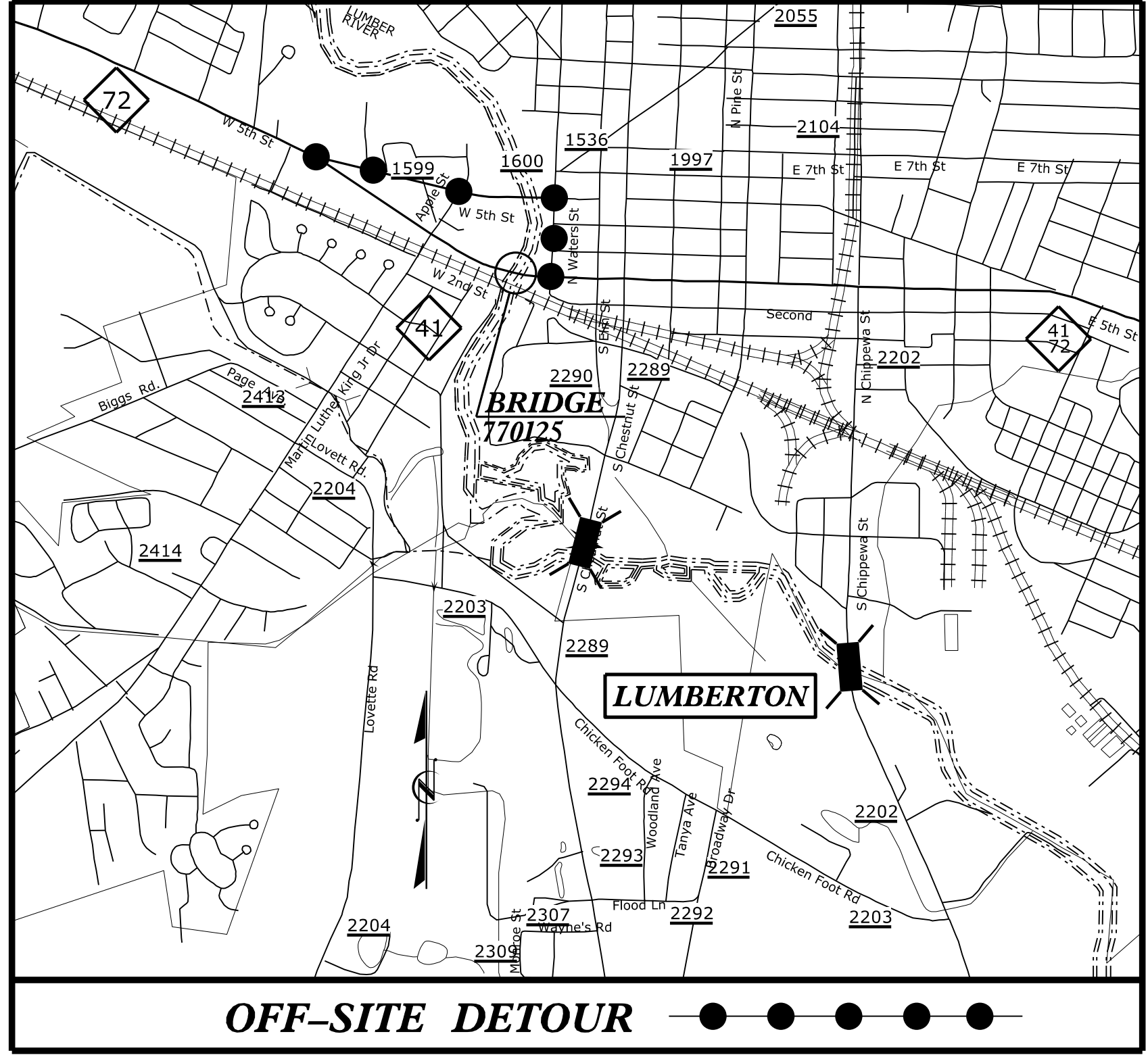
1223 Jones Franklin Rd.
Raleigh, N.C. 27606
License No. F-0377
Bus: 919 851 8077
Fax: 919 851 8107

WETHERILL ENGINEERING

TRANSPORTATION PLANNING/DESIGN - BRIDGE/STRUCTURE DESIGN
CIVIL/SITE DESIGN - GIS/GPS - CONSTRUCTION OBSERVATION

PROJECT: B-5985A

CONTRACT: C204764

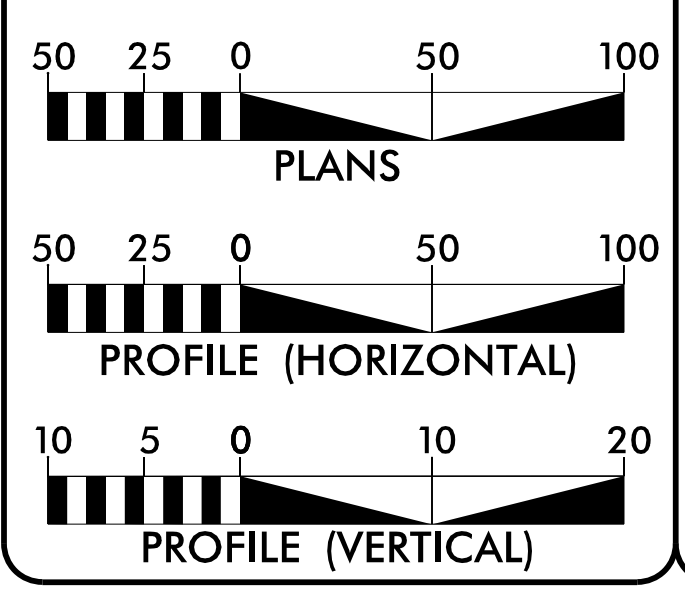


BRIDGE #770125

☆ - EXISTING SIGNAL

DOCUMENT NOT CONSIDERED FINAL
UNLESS ALL SIGNATURES COMPLETED

GRAPHIC SCALES



DESIGN DATA

BRIDGE # 770125
 ADT 2022 = 15,200
 ADT 2042 = 17,000
 K = 9 %
 D = 55 %
 T = 6 % *
 V = 40 MPH
 * (TTST = 2% + DUAL = 4%)
 FUNC CLASS = PRINCIPAL ARTERIAL REGIONAL TIER

PROJECT LENGTH

BRIDGE # 770125
 LENGTH ROADWAY PROJECT B-5985A = 0.175 MILES
 LENGTH STRUCTURE PROJECT B-5985A = 0.056 MILES
 TOTAL LENGTH PROJECT B-5985A = 0.231 MILES

Prepared for:
DIVISION OF HIGHWAYS
STRUCTURES MANAGEMENT UNIT
 1000 BIRCH RIDGE DRIVE RALEIGH NC, 27610

2018 STANDARD SPECIFICATIONS
 RIGHT OF WAY DATE: **EDWARD G. WETHERILL, PE**
 JANUARY 27, 2022
 PROJECT ENGINEER
 LETTING DATE: **GREG S. PURVIS, PE**
 JULY 18, 2023
 PROJECT DESIGN ENGINEER
 NCDOT CONTACT: **DAVID STUTTS, PE**
 PROJECT ENGINEER - PEP/PROGRAM MGT.

HYDRAULICS ENGINEER
 5/25/2023
 NORTH CAROLINA PROFESSIONAL SEAL 044561
 HARMINDER SINGH
 DocuSigned by:
 Harminder Singh P.E.
 SIGNATURE

ROADWAY DESIGN ENGINEER
 5/25/2023
 NORTH CAROLINA PROFESSIONAL SEAL 022999
 GREG S. PURVIS
 DocuSigned by:
 Greg S. Purvis P.E.
 SIGNATURE

