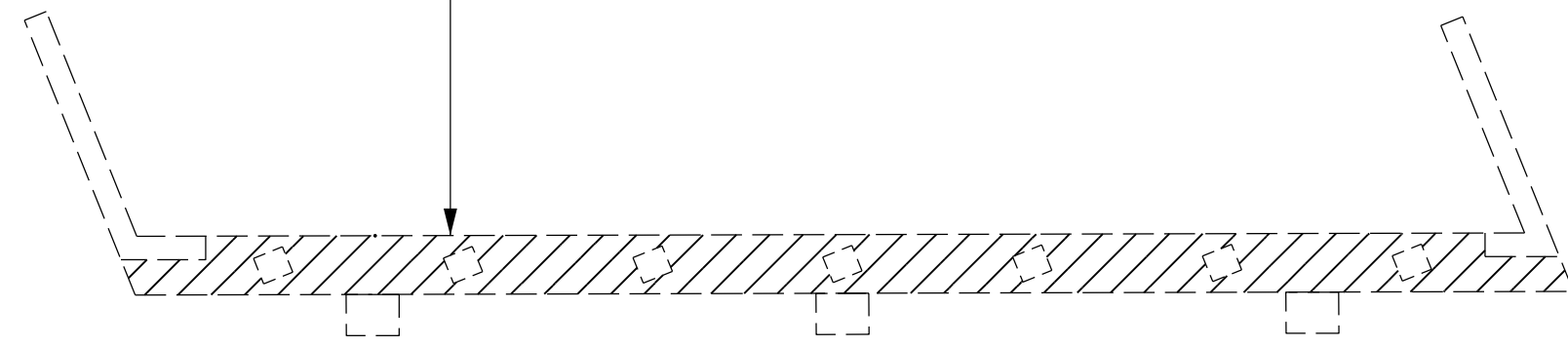


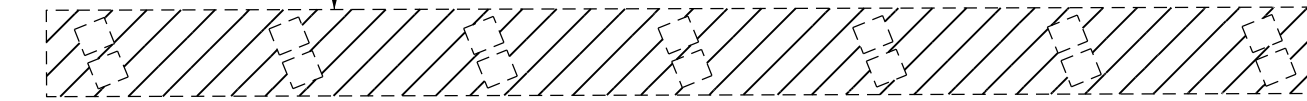
PRELIMINARY PLANS
DO NOT USE FOR CONSTRUCTION

COAT ALL THE FREE SURFACE AREA ON THE TOP OF THE CAPS, INCLUDING CHAMFERS, WITH EPOXY PROTECTIVE COATING. DO NOT COAT UNDER BEARING AREAS.



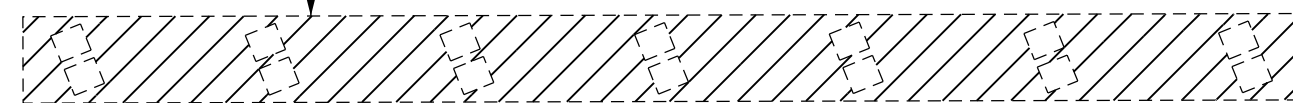
END BENT 1

COAT ALL THE FREE SURFACE AREA ON THE TOP OF THE CAPS, INCLUDING CHAMFERS, WITH EPOXY PROTECTIVE COATING. DO NOT COAT UNDER BEARING AREAS.



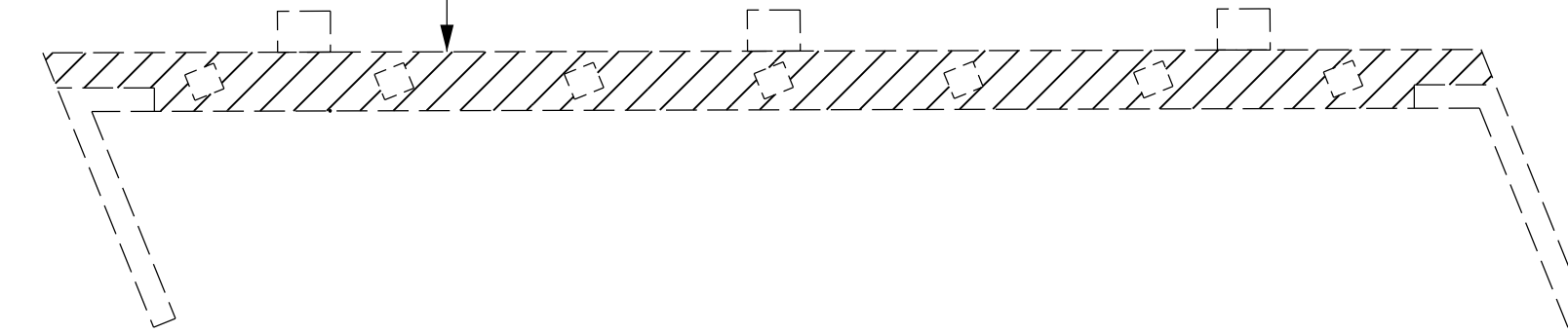
BENT 1

COAT ALL THE FREE SURFACE AREA ON THE TOP OF THE CAPS, INCLUDING CHAMFERS, WITH EPOXY PROTECTIVE COATING. DO NOT COAT UNDER BEARING AREAS.



BENT 2

COAT ALL THE FREE SURFACE AREA ON THE TOP OF THE CAPS, INCLUDING CHAMFERS, WITH EPOXY PROTECTIVE COATING. DO NOT COAT UNDER BEARING AREAS.



END BENT 2

LEGEND

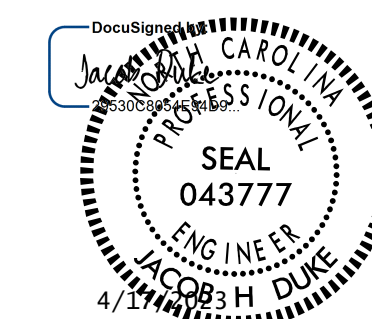
	EPOXY COATING AREA
--	--------------------

NOTES:

- COORDINATE THIS SHEET WITH OTHER SHEETS FOR "CONCRETE RESTORATION DETAILS".
- PERFORM ALL CONCRETE REPAIRS PRIOR TO APPLYING THE EPOXY PROTECTIVE COATING.
- THE TOPS OF THE CAPS SHOULD BE CLEAN AND CLEAR OF ALL DEBRIS PRIOR TO THE APPLICATION OF THE EPOXY PROTECTIVE COATING.
- FOR EPOXY PROTECTIVE COATING AND DEBRIS REMOVAL, SEE SPECIAL PROVISIONS AND STANDARD SPECIFICATIONS SECTION 420-18.

AS-BUILT REPAIR QUANTITY TABLE		
EPOXY COATING BENT CAPS		
	TOTAL	
LOCATION	ESTIMATE	ACTUAL
END BENT 1	142 SF	
BENT 1	164 SF	
BENT 2	164 SF	
END BENT 2	142 SF	
TOTAL	612 SF	

PROJECT NO. I-6039
NEW HANOVER COUNTY
 BRIDGE NO. 640044



STATE OF NORTH CAROLINA
 DEPARTMENT OF TRANSPORTATION
 RALEIGH

**EPOXY COATING
 SUBSTRUCTURE**

DRAWN BY : JASON M. DEBONE DATE : 01/2023
 CHECKED BY : ALLEN J. MCSWAIN DATE : 01/2023
 DESIGN ENGINEER OF RECORD: JACOB H. DUKE DATE : 01/2023

DOCUMENT NOT CONSIDERED FINAL
 UNLESS ALL SIGNATURES COMPLETED

301 FAYETTEVILLE ST., SUITE 1500
 RALEIGH, NC 27601 (919) 892-7839
 NC FIRM LICENSE: C-1506

REVISIONS						SHEET NO.
NO.	BY:	DATE:	NO.	BY:	DATE:	TOTAL SHEETS
1			3			13
2			4			