

TIP PROJECT: I-6039

CONTRACT:

STATE OF NORTH CAROLINA
DIVISION OF HIGHWAYS

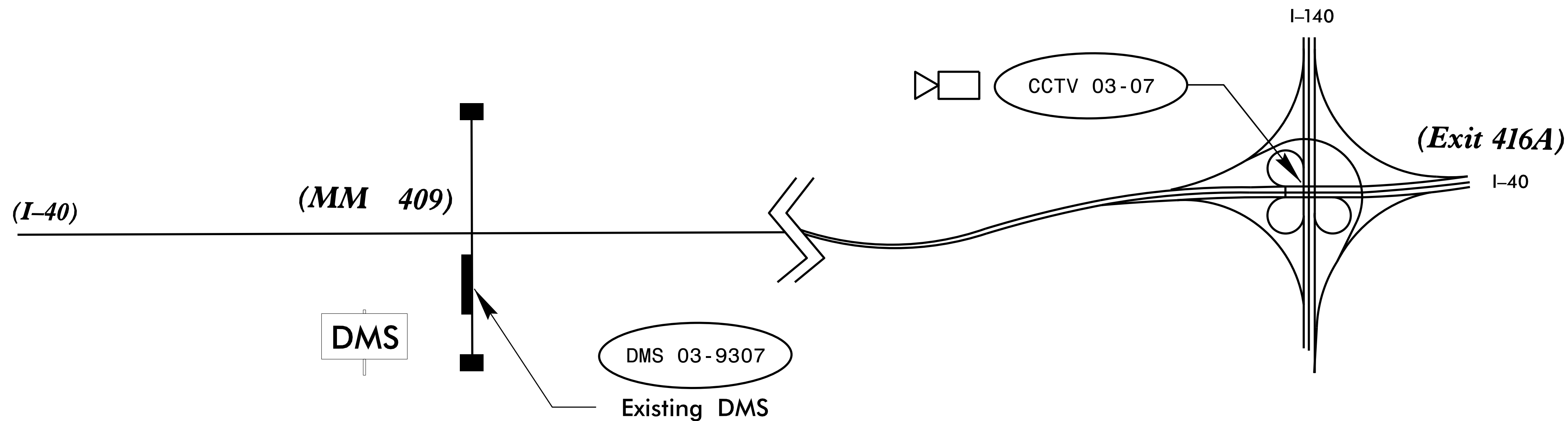
**NEW HANOVER &
PENDER COUNTIES**

STATE	STATE PROJECT REFERENCE NO.	SHEET NO.
N.C.	I-6039	ITS-1
STATE PROJ. NO.	F.A. PROJ. NO.	DESCRIPTION



LOCATION: I-40 EB EXIT 416A (I-140 EB) AND MM-409

TYPE OF WORK: REFURBISH EXISTING CCTV SOLAR POWER ASSEMBLY, AND UPDATE EXISTING DYNAMIC MESSAGING SIGN, RELOCATING TO THE MEDIAN.



2018 STANDARD SPECIFICATIONS

PROJECT LENGTH
PROJECT LENGTH = 0.0 MILES

LETTING DATE:

INDEX OF SHEETS	
SHEET ITS 1	TITLE SHEET
SHEET ITS 2-3	ITS PLANS
SHEET ITS 4	DMS TYPICAL
SHEET ITS 5	DMS ELEVATION

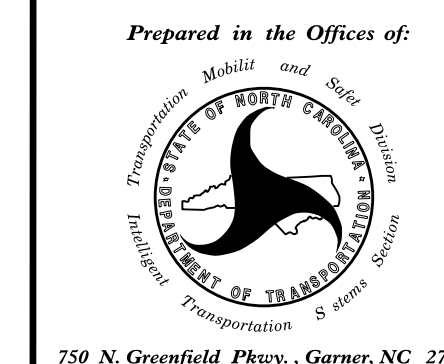
ROADWAY STANDARD DRAWINGS

THE FOLLOWING ROADWAY STANDARDS AS APPEAR IN "ROADWAY STANDARD DRAWINGS" ROADWAY DESIGN UNIT - N.C. DEPARTMENT OF TRANSPORTATION - RALEIGH, N.C., DATED JANUARY 2018 ARE APPLICABLE TO THIS PROJECT AND BY REFERENCE HEREBY ARE CONSIDERED A PART OF THESE PLANS:

STD. NO.	TITLE
1101.02	TEMPORARY LANE CLOSURES
1101.03	TEMPORARY ROAD CLOSURES
1101.04	TEMPORARY SHOULDER CLOSURES
1700.01	ELECTRICAL SERVICE OPTIONS
1700.02	ELECTRICAL SERVICE GROUNDING
1715.01	UNDERGROUND CONDUIT-TRENCHING

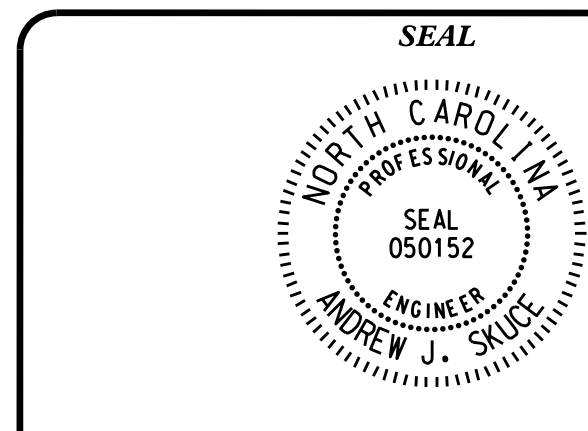
2018 STANDARD SPECIFICATION

NCDOT CONTACT:
TRANSPORTATION MOBILITY AND SAFETY
M. M. MCDIARMID, P.E., CPM
STATE TRANSPORTATION SYSTEMS
MANAGEMENT & OPERATIONS ENGINEER



ENGLISH

ALL DIMENSIONS IN THESE PLANS ARE IN FEET UNLESS OTHERWISE NOTED



SIGNATURE _____ DATE _____