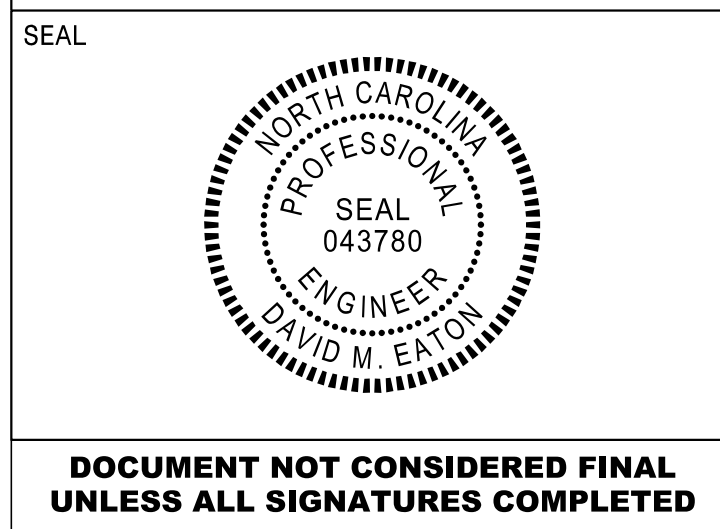


APPROVED: *David M. Eaton*
DocuSigned by: David M. Eaton
 DDA1C6F247484F7

DATE: 11/09/2022



SIGN NUMR: 1
 TYPE: A Overhead
 QUANTITY: 1

BACKG. COLOR: Green
 COPY COLOR: White

DESIGN BY: DME
 PROJECT ID: I-6039

CHECKED BY: AIA
 LOCATION: I-40

DATE: Oct 20, 2022
 DIV: 03

N. C. DEPARTMENT OF TRANSPORTATION
 DIVISION OF HIGHWAYS
 TRANSPORTATION MOBILITY AND SAFETY
 SIGNING AND DELINEATION

SIGN WIDTH: 174"
 HEIGHT: 120"
 TOTAL AREA: 145.0 Sq.Ft.

SYMBOL	X	Y	WID	HT
M1_1	38.31	69	36	36
ARDOWN	70.97	11	32.05	22

MAT'L: 0.125" ALUMINUM

BORDER TYPE: FLUSH
 RECESS: 0"
 WIDTH: 2"
 RADII: 12"

NO. Z BARS: 3
 LENGTH: 166.0"

USE NOTES: 1,3,5
 1. Legend and border shall be direct applied Grade A reflective sheeting.
 2. Legend and border shall be direct applied Grade C reflective sheeting.
 3. Shields shall be Grade A reflective sheeting on 0.032" aluminum and demountable.
 4. Background shall be Grade B reflective sheeting.
 5. Background shall be Grade C reflective sheeting.
 6. Center arrow(s) vertically on sign.

Letter spacings are to start of next letter											Series/Size	
											Text Length	
E	A	S	T								E 2000	
89.31	11.25	1.53	13.56	11.04	9	38.31					46.38	
W	i	l	m	i	n	g	t	o	n		EM 2000	
15.56	20.8	9.6	9.6	24	9.6	15.52	15.36	12	15.84	10.56	15.56	142.88

Spacing Factor is 1 unless specified otherwise
 FILENAME: GSENG

SIGN NUMR: 2A, 6A
 TYPE: A Overhead
 QUANTITY: 2

BACKG. COLOR: Green
 COPY COLOR: White

DESIGN BY: DME
 PROJECT ID: I-6039

CHECKED BY: AIA
 LOCATION: I-40

DATE: Oct 20, 2022
 DIV: 03

N. C. DEPARTMENT OF TRANSPORTATION
 DIVISION OF HIGHWAYS
 TRANSPORTATION MOBILITY AND SAFETY
 SIGNING AND DELINEATION

SIGN WIDTH: 156"
 HEIGHT: 30"
 TOTAL AREA: 32.5 Sq.Ft.

SYMBOL	X	Y	WID	HT

MAT'L: 0.125" ALUMINUM

BORDER TYPE: FLUSH
 RECESS: 0"
 WIDTH: 1.5"
 RADII: 3"

NO. Z BARS: 2
 LENGTH: 148.0"

USE NOTES: 1,5
 1. Legend and border shall be direct applied Grade A reflective sheeting.
 2. Legend and border shall be direct applied Grade C reflective sheeting.
 3. Shields shall be Grade A reflective sheeting on 0.032" aluminum and demountable.
 4. Background shall be Grade B reflective sheeting.
 5. Background shall be Grade C reflective sheeting.
 6. Center arrow(s) vertically on sign.

Letter spacings are to start of next letter											Series/Size	
											Text Length	
E	X	I	T	4	1	6	B				E 2000	
26.53	8.9	10.7	3.5	7.5	15	17.1	7.95	12.15	8	12.15	26.53	102.95

Spacing Factor is 1 unless specified otherwise
 FILENAME: GSENG

SIGN NUMR: 2B
 TYPE: A Overhead
 QUANTITY: 1

BACKG. COLOR: Green
 COPY COLOR: White

DESIGN BY: DME
 PROJECT ID: I-6039

CHECKED BY: AIA
 LOCATION: I-40

DATE: Oct 20, 2022
 DIV: 03

N. C. DEPARTMENT OF TRANSPORTATION
 DIVISION OF HIGHWAYS
 TRANSPORTATION MOBILITY AND SAFETY
 SIGNING AND DELINEATION

SIGN WIDTH: 252"
 HEIGHT: 120"
 TOTAL AREA: 210.0 Sq.Ft.

SYMBOL	X	Y	WID	HT
NC363A	56.51	70	36	36
AR_Type A	207.85	46.21	22.25	35.04

MAT'L: 0.125" ALUMINUM

BORDER TYPE: FLUSH
 RECESS: 0"
 WIDTH: 2"
 RADII: 12"

NO. Z BARS: 3
 LENGTH: 244.0"

USE NOTES: 1,3,5,6
 1. Legend and border shall be direct applied Grade A reflective sheeting.
 2. Legend and border shall be direct applied Grade C reflective sheeting.
 3. Shields shall be Grade A reflective sheeting on 0.032" aluminum and demountable.
 4. Background shall be Grade B reflective sheeting.
 5. Background shall be Grade C reflective sheeting.
 6. Center arrow(s) vertically on sign.

Letter spacings are to start of next letter											Series/Size					
											Text Length					
E	A	S	T								E 2000					
107.52	11.25	1.53	13.56	11.04	9	98.11					46.38					
T	o	p	s	a	i	l		I	s	l	a	n	d	EM 2000		
16.57	14.24	15.84	13.76	14.08	16.96	9.6	3.2	16	6.88	15.52	8.16	16.96	15.52	10.56	58.16	177.28
N	e	w		B	e	r	n									EM 2000
46.73	16.96	13.76	16.32	16	16	15.52	11.84	10.56	88.32							116.96

Spacing Factor is 1 unless specified otherwise
 FILENAME: GSENG

SIGN NUMR: 4A, 5A
 TYPE: A Overhead
 QUANTITY: 2

BACKG. COLOR: Green
 COPY COLOR: White

DESIGN BY: DME
 PROJECT ID: I-6039

CHECKED BY: AIA
 LOCATION: I-40

DATE: Oct 20, 2022
 DIV: 03

N. C. DEPARTMENT OF TRANSPORTATION
 DIVISION OF HIGHWAYS
 TRANSPORTATION MOBILITY AND SAFETY
 SIGNING AND DELINEATION

SIGN WIDTH: 156"
 HEIGHT: 30"
 TOTAL AREA: 32.5 Sq.Ft.

SYMBOL	X	Y	WID	HT

MAT'L: 0.125" ALUMINUM

BORDER TYPE: FLUSH
 RECESS: 0"
 WIDTH: 1.5"
 RADII: 3"

NO. Z BARS: 2
 LENGTH: 148.0"

USE NOTES: 1,5
 1. Legend and border shall be direct applied Grade A reflective sheeting.
 2. Legend and border shall be direct applied Grade C reflective sheeting.
 3. Shields shall be Grade A reflective sheeting on 0.032" aluminum and demountable.
 4. Background shall be Grade B reflective sheeting.
 5. Background shall be Grade C reflective sheeting.
 6. Center arrow(s) vertically on sign.

Letter spacings are to start of next letter											Series/Size	
											Text Length	
E	X	I	T	4	1	6	A				E 2000	
24.95	8.9	10.7	3.5	7.5	15	17.1	7.95	12.15	8	15.3	24.95	106.1

Spacing Factor is 1 unless specified otherwise
 FILENAME: GSENG

TYPE A & B SIGN DESIGNS

I:\07\22
 C:\Data\stuf\16039_16036\140 Maintenance\6039_Gurdsign_sign_designs.dgn
 User:meaton