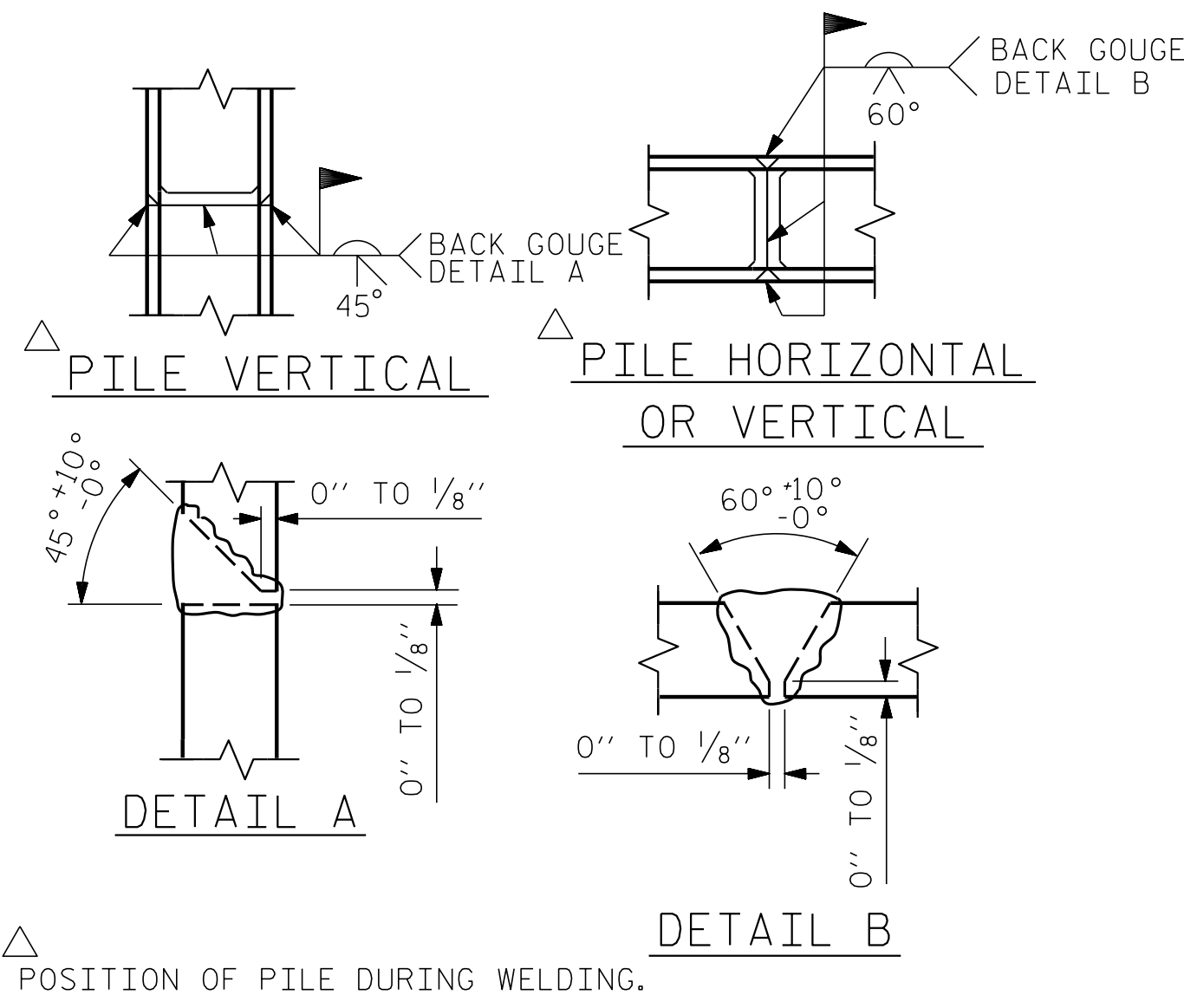


BAGGED STONE AND PIPE SHALL BE PLACED IMMEDIATELY AFTER COMPLETION OF END BENT EXCAVATION. PIPE MAY BE EITHER CONCRETE, CORRUGATED STEEL, CORRUGATED ALUMINUM ALLOY, OR CORRUGATED PLASTIC. PERFORATED PIPE WILL NOT BE ALLOWED.

BAGGED STONE SHALL REMAIN IN PLACE UNTIL THE ENGINEER DIRECTS THAT IT BE REMOVED. THE CONTRACTOR SHALL REMOVE AND DISPOSE OF SILT ACCUMULATIONS AT BAGGED STONE WHEN SO DIRECTED BY THE ENGINEER. BAGS SHALL BE REMOVED AND REPLACED WHENEVER THE ENGINEER DETERMINES THAT THEY HAVE DETERIORATED AND LOST THEIR EFFECTIVENESS.

NO SEPARATE PAYMENT WILL BE MADE FOR THIS WORK AND THE ENTIRE COST OF THIS WORK SHALL BE INCLUDED IN THE UNIT CONTRACT PRICE BID FOR THE SEVERAL PAY ITEMS.

TEMPORARY DRAINAGE AT END BENT

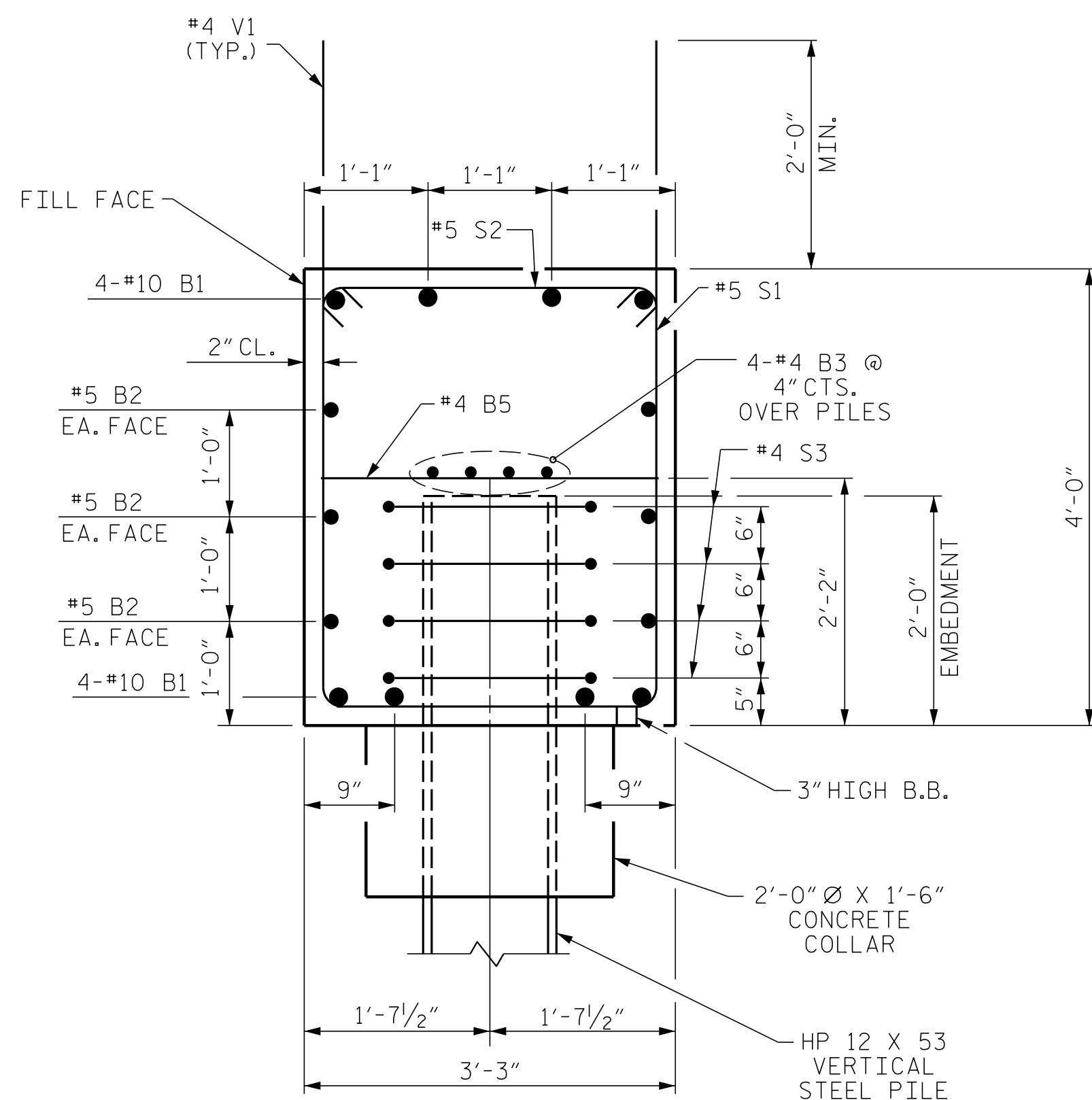


PILE SPLICE DETAILS

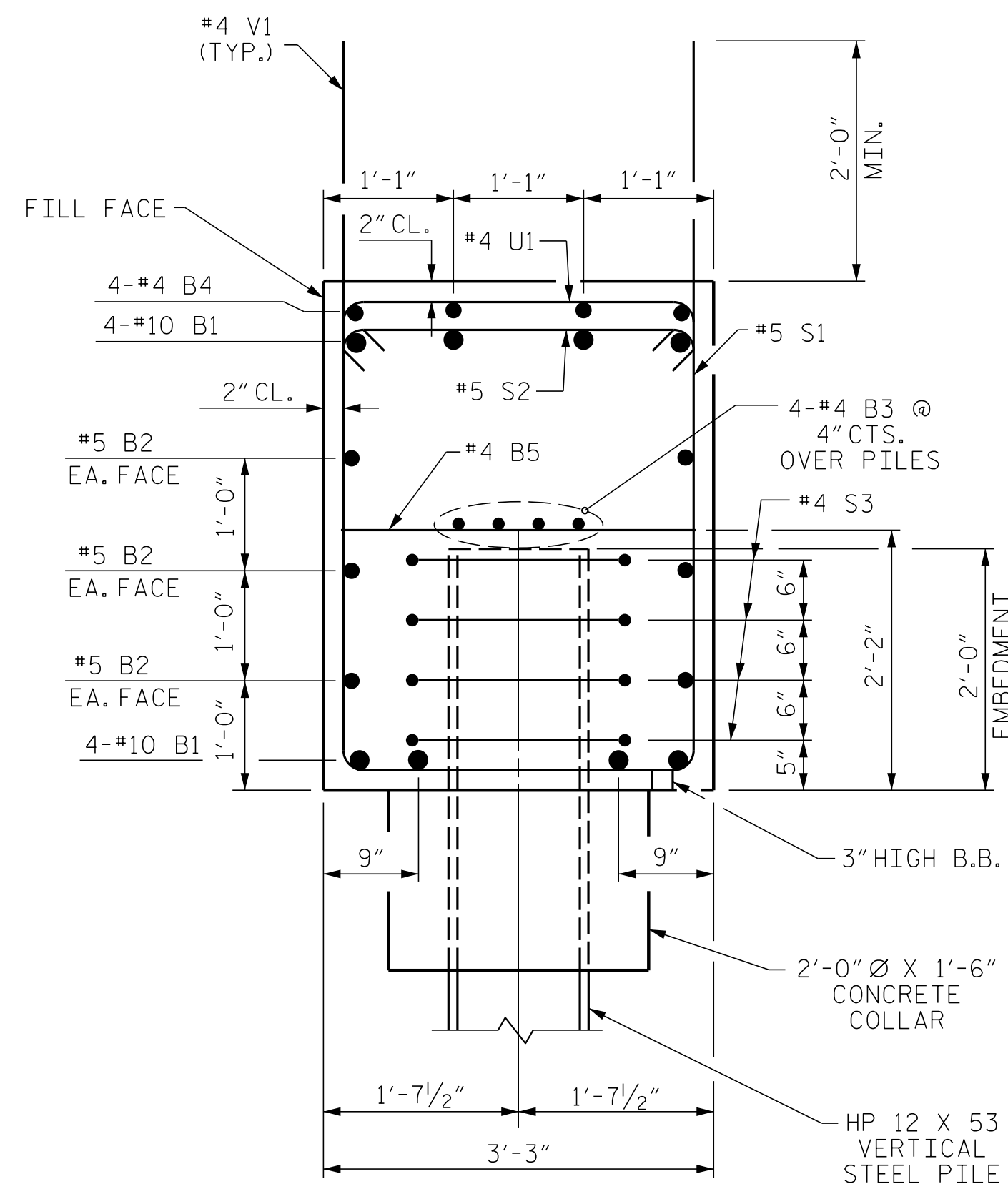
BAR TYPES					BILL OF MATERIAL				
					END BENT No. 1				
BAR	NO.	SIZE	TYPE	LENGTH	WEIGHT				
B1	8	#10		44'-11"	1546				
B2	6	#5	STR	42'-3"	264				
B3	8	#4	STR	22'-4"	119				
B4	4	#4	STR	12'-8"	34				
B5	11	#4	STR	2'-11"	21				
H1	72	#6	2	15'-11"	1721				
H2	40	#6	2	18'-2"	1091				
H3	36	#4	STR	3'-3"	78				
S1	66	#5	3	11'-1"	763				
S2	66	#5	4	3'-10"	264				
S3	28	#4	5	6'-6"	122				
U1	9	#4	6	5'-11"	36				
V1	46	#4	STR	6'-0"	184				
V2	80	#5	STR	10'-10"	904				
REINFORCING STEEL					7,147 LBS.				
CLASS A CONCRETE BREAKDOWN									
POUR #1	CAP, CONC, COLLARS & LOWER PART OF WINGS				26.3 C.Y.				
POUR #2	UPPER PART OF WINGS				9.7 C.Y.				
TOTAL CLASS A CONCRETE					36.0 C.Y.				

ALL BAR DIMENSIONS ARE OUT TO OUT.

HP 12 X 53 VERTICAL STEEL PILES	
NO: 7	LIN. FT. = 189
PILE DRIVING EQUIPMENT SETUP FOR HP 12 X 53 VERTICAL STEEL PILES	
	7 EA.



SECTION A-A



SECTION B-B

PROJECT NO. B-5947

NASH COUNTY

STATION: 23+90.50 -LREV-

SHEET 3 OF 3

ENGINEER OF RECORD
5/11/2022

NORTH CAROLINA PROFESSIONAL SEAL 37400

ENGINEER
GREGORY M. GILLAND

Gregory M. Gilland
ETHERILL ENGINEERING

1223 Jones Franklin Rd.
Raleigh, N.C. 27606
Bus: 919 851 8077
Fax: 919 851 8107
LICENSE NO. F-0377

STATE OF NORTH CAROLINA		DEPARTMENT OF TRANSPORTATION		RALEIGH	
SUBSTRUCTURE					
END BENT No. 1					
REVISIONS					
NO.	BY:	DATE:	NO.	BY:	DATE:
1			3		
2			4		
SHEET NO.					S-29
TOTAL SHEETS					39

DRAWN BY: G.M. GILLAND DATE: 7/20

CHECKED BY: J. PENDERGRAFT DATE: 10/20

DOCUMENT NOT CONSIDERED FINAL UNLESS ALL SIGNATURES COMPLETED

P:\2019\19114\01_B-5947\Structures\DGN\401_001_B5947_SMU_EB_001.dgn
 5/11/2022 11:11:21 AM