

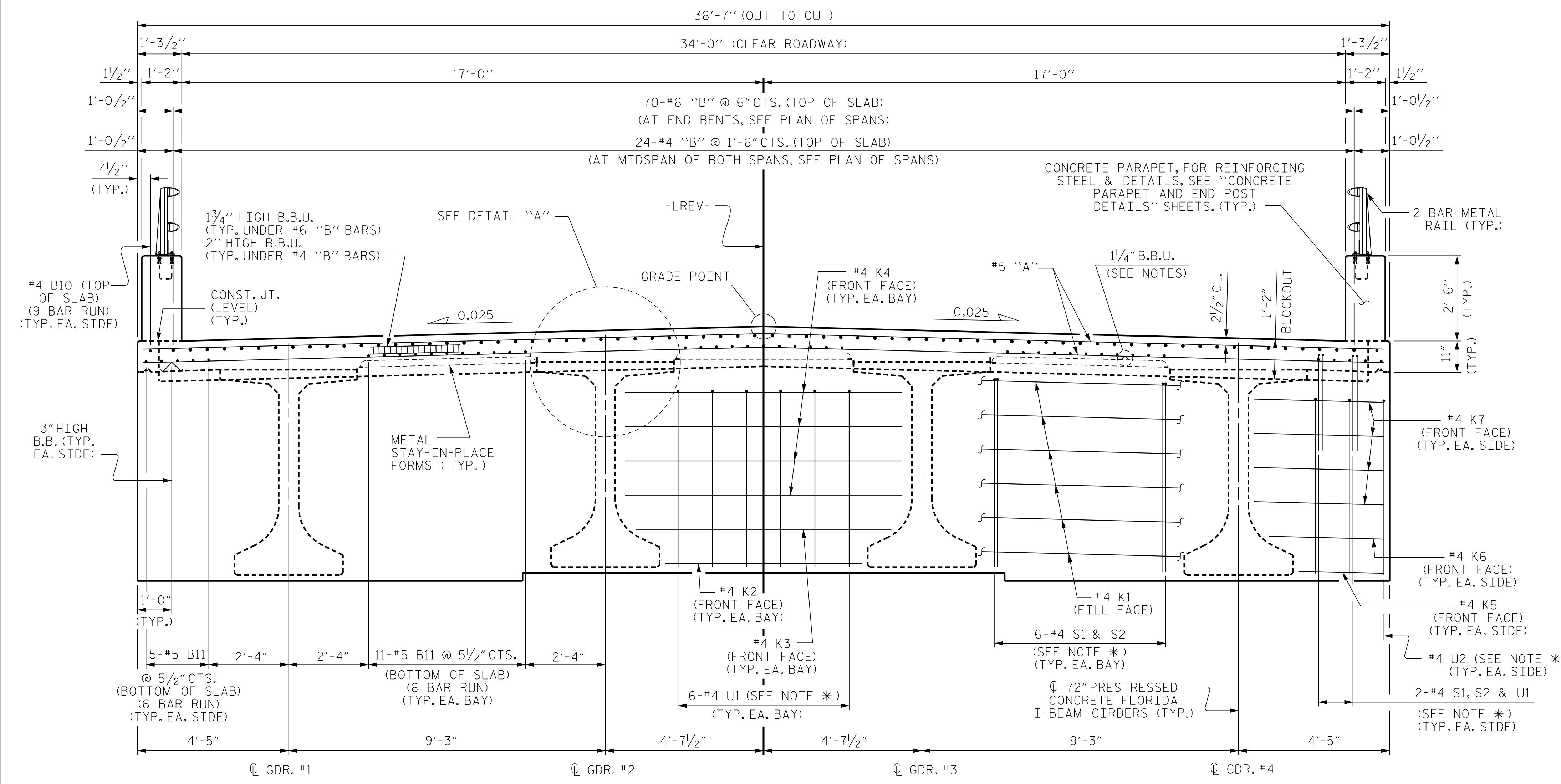
**NOTES:**

PROVIDE 1/4" HIGH BEAM BOLSTERS UPPER AT 4'-0" CTS. ATOP THE METAL STAY-IN-PLACE FORMS TO SUPPORT THE BOTTOM MAT OF 'A' BARS. WHEN USING REMOVABLE FORMS, PROVIDE CONTINUOUS HIGH CHAIRS FOR METAL DECK (C.H.C.M.) @ 4'-0" CTS. WITH A HEIGHT TO SUPPORT THE BOTTOM MAT OF 'A' BARS A CLEAR DISTANCE OF 2 1/2" ABOVE THE TOP OF THE REMOVABLE FORM.

LONGITUDINAL STEEL MAY BE SHIFTED SLIGHTLY, AS NECESSARY, TO AVOID INTERFERENCE WITH STIRRUPS IN PRESTRESSED CONCRETE GIRDERS.

PREVIOUSLY CAST CONCRETE IN A CONTINUOUS UNIT SHALL HAVE ATTAINED A MINIMUM COMPRESSIVE STRENGTH OF 3,000 PSI BEFORE ADDITIONAL CONCRETE IS CAST IN THE UNIT.

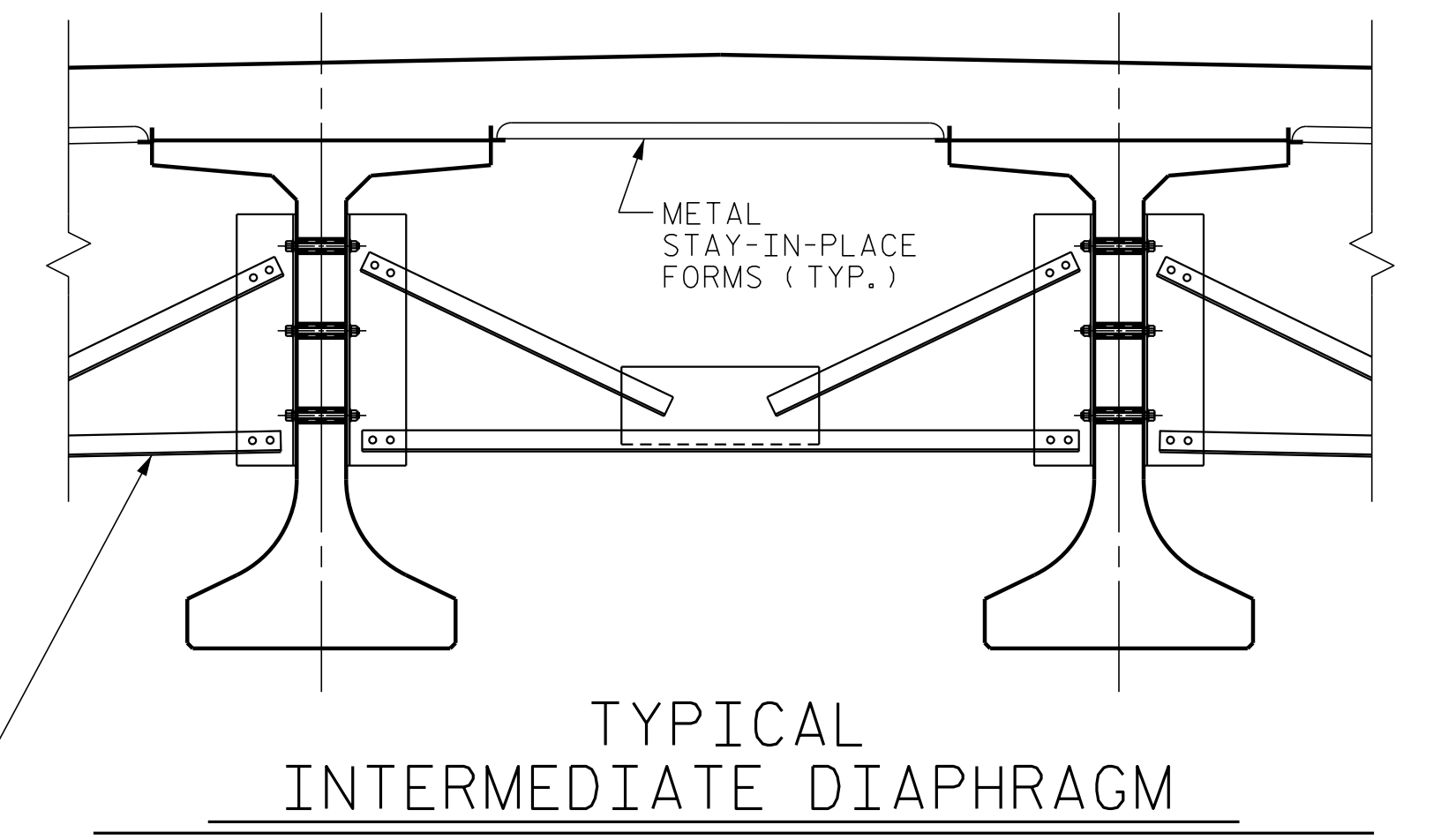
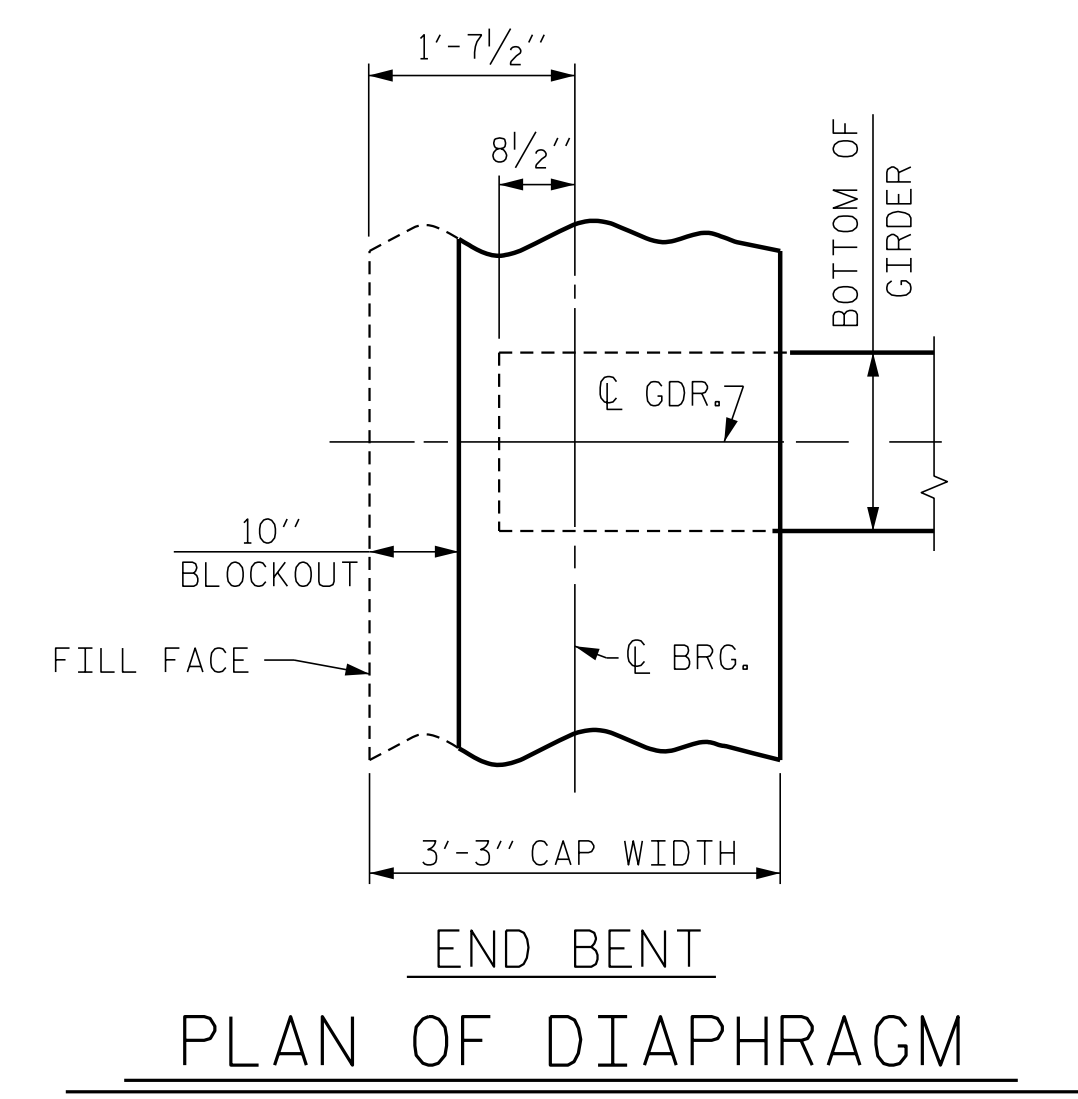
CONCRETE PARAPET IN A CONTINUOUS UNIT SHALL NOT BE CAST UNTIL ALL SLAB CONCRETE IN THE UNIT HAS BEEN CAST AND HAS REACHED A MINIMUM COMPRESSIVE STRENGTH OF 3,000 PSI.



**TYPICAL SECTION**

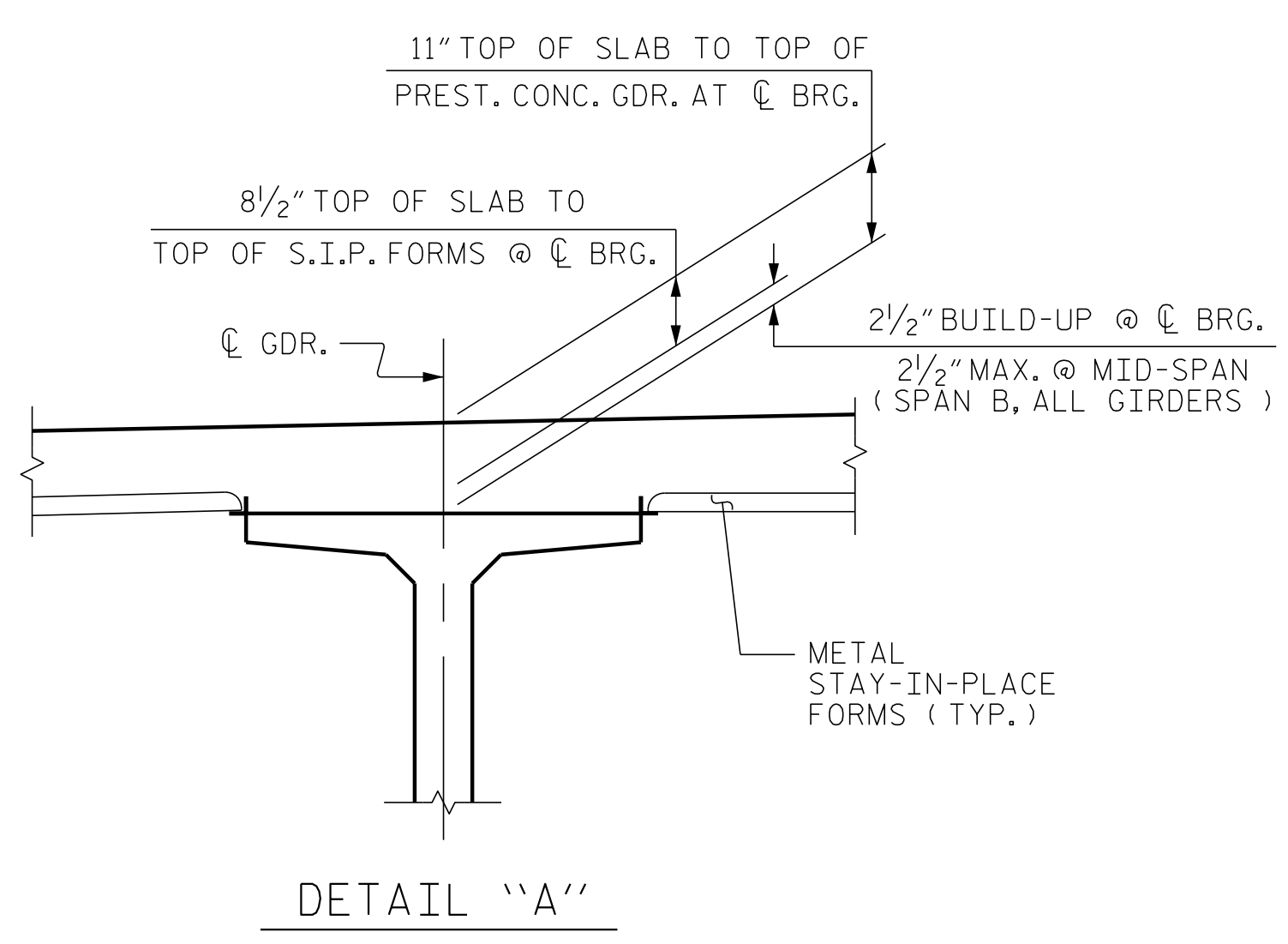
END BENT No. 1 DIAPHRAGM SHOWN, END BENT No. 2 SIMILAR

NOTE \*  
THESE BARS ARE TO MATCH #4 'V' BARS IN END BENT

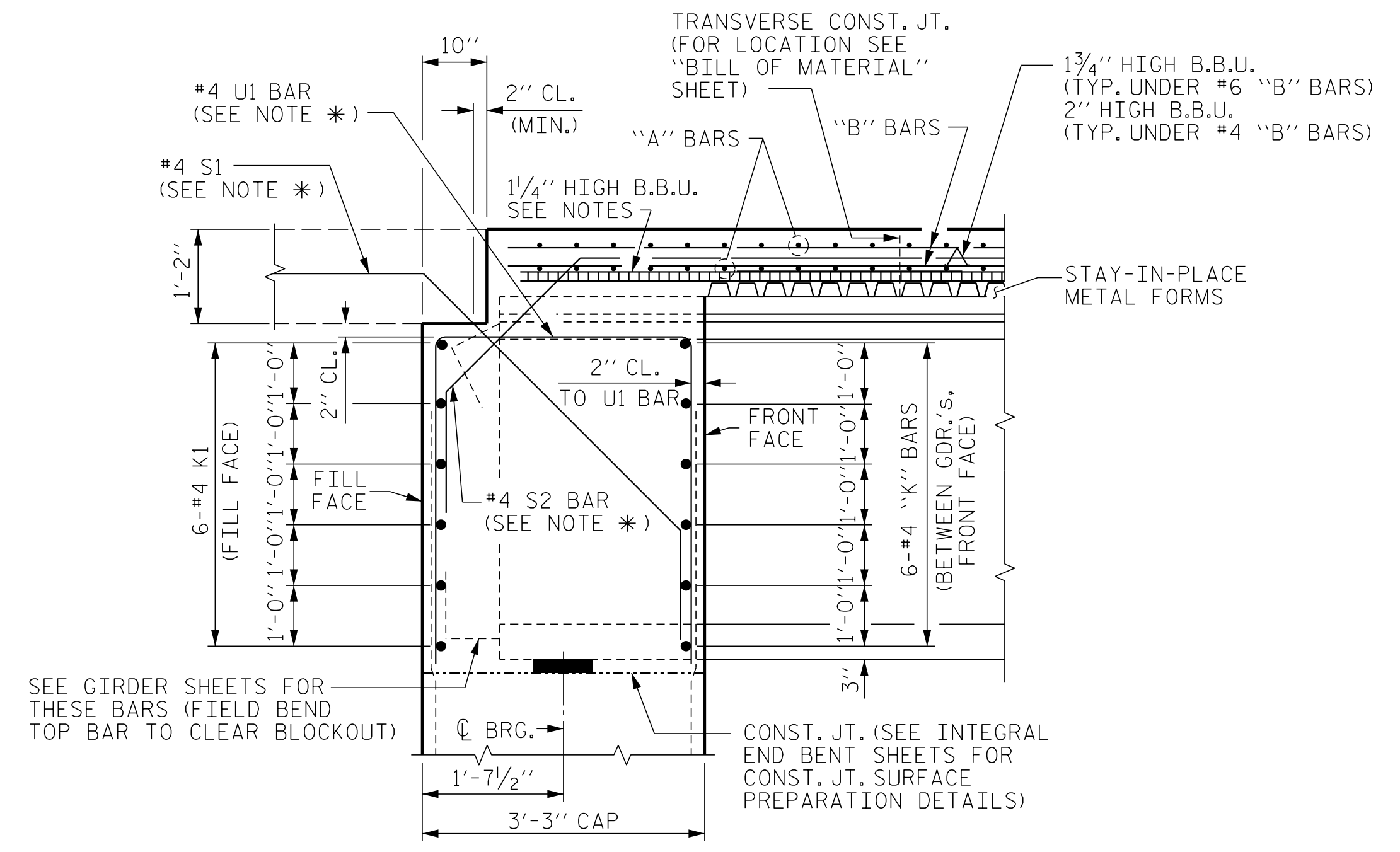


FOR INTERMEDIATE STEEL DIAPHRAGM DETAILS, SEE 'INTERMEDIATE STEEL DIAPHRAGMS FOR 72" PRESTRESSED FLORIDA I BEAM' (TYP.)

PROJECT NO. B-5947  
NASH COUNTY  
 STATION: 23+90.50 -LREV-  
 SHEET 1 OF 2



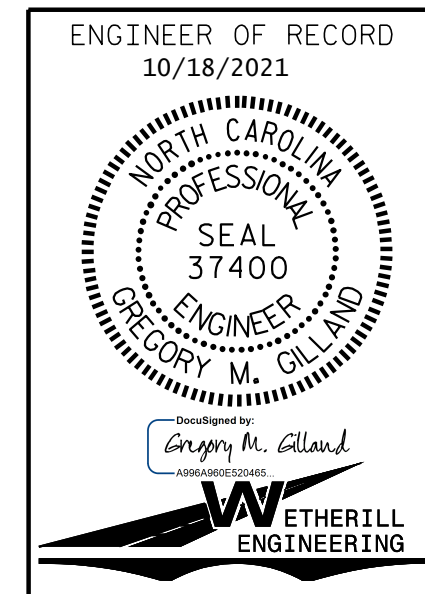
**DETAIL 'A'**



**SECTION THRU INTEGRAL END BENT**

SEE GIRDER SHEETS FOR THESE BARS (FIELD BEND TOP BAR TO CLEAR BLOCKOUT)

CONST. JT. (SEE INTEGRAL END BENT SHEETS FOR CONST. JT. SURFACE PREPARATION DETAILS)



ENGINEER OF RECORD  
10/18/2021

STATE OF NORTH CAROLINA  
DEPARTMENT OF TRANSPORTATION  
RALEIGH

SUPERSTRUCTURE  
TYPICAL SECTION

REVISIONS					
NO.	BY:	DATE:	NO.	BY:	DATE:
1			3		
2			4		

SHEET NO. S-07  
TOTAL SHEETS 39

DRAWN BY: D. HODGE DATE: 3/20  
 CHECKED BY: G. GILLAND DATE: 5/20

DOCUMENT NOT CONSIDERED FINAL  
UNLESS ALL SIGNATURES COMPLETED

1223 Jones Franklin Rd.  
Raleigh, N.C. 27606  
Bus: 919 851 8077  
Fax: 919 851 8107  
LICENSE NO. F-0377

P:\2019\1911401\_B-5947\Structures\DGN\401\_001\_B5947\_SMU\_TS\_001.dgn  
 10/18/2021 10:28:03 AM