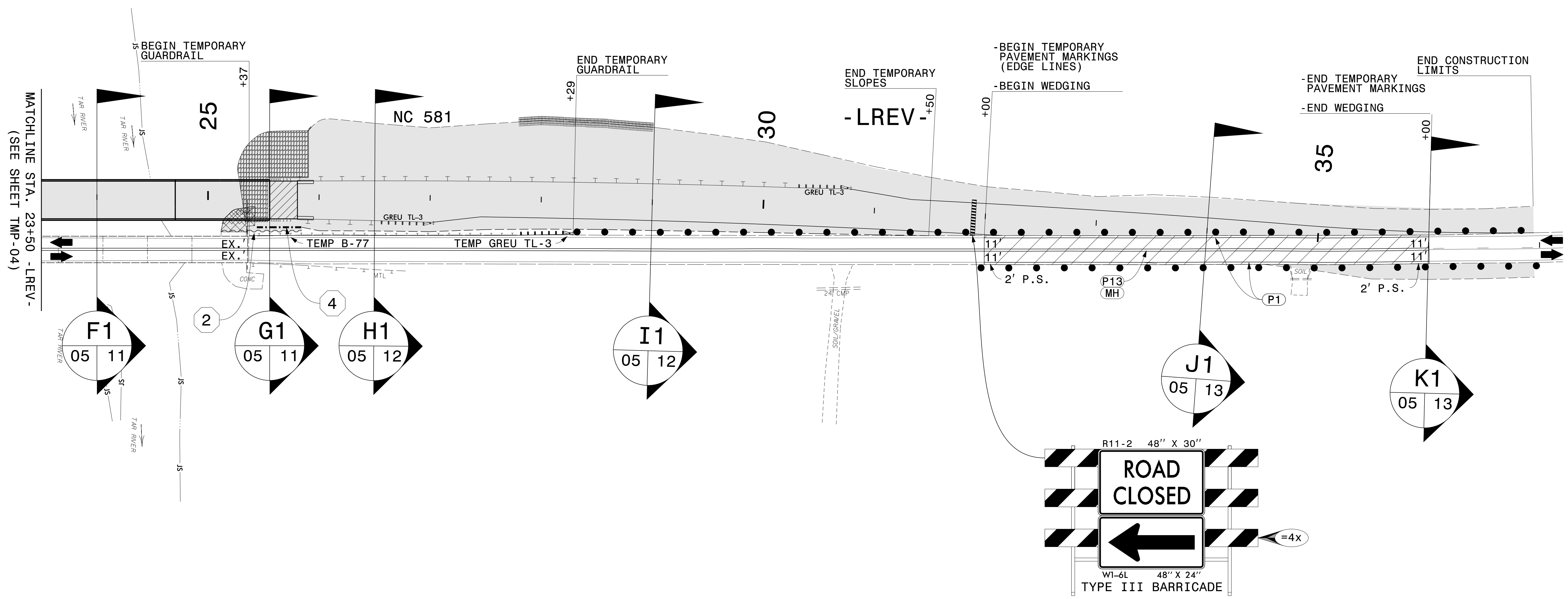
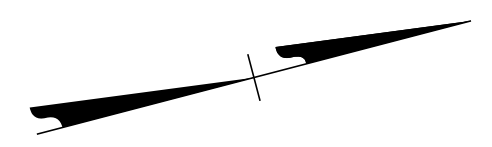


2 QUANTITY = 248.2 SF  
 TEMPORARY SHORING  
 FROM STA. 25+12 +/- -LREV-,  
 SHORING BACK FACE 28.8' RIGHT  
 OF C.L.  
  
 TO STA. 25+85 +/- -LREV-,  
 SHORING BACK FACE 28.8' RIGHT  
 OF C.L.= 2.6' LEFT OF EOP  
  
 (SEE SHEET TMP-02A FOR  
 TEMPORARY SHORING NOTES)

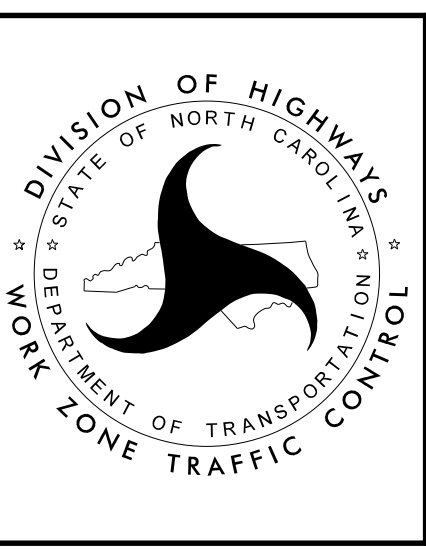
4 QUANTITY = 205 SF  
 TEMPORARY SHORING  
 FROM STA. 25+44 +/- -LREV-,  
 24.6' RIGHT OF C.L.=  
 7.8' LEFT OF EOP  
  
 TO STA. 25+85 +/- -LREV-,  
 24.6' RIGHT OF C.L.=  
 7.2' LEFT OF EOP  
  
 (SEE SHEET TMP-02B FOR  
 TEMPORARY SHORING NOTES)



NOTES:  
 - SEE ROADWAY PLANS FOR CONSTRUCTION LIMITS.

**ETHERILL ENGINEERING**  
 1223 Jones Franklin Rd.  
 Raleigh, N.C. 27606  
 License No. F-0377  
 Bus: 919 851 8077  
 Fax: 919 851 8107  
 TRANSPORTATION PLANNING/DESIGN - BRIDGE/STRUCTURE DESIGN  
 CIVIL/SITE DESIGN - GIS/GPS - CONSTRUCTION OBSERVATION

APPROVED: *Greg S. Purvis*  
DocuSigned by:  
Greg S. Purvis  
D78F7C5E8403  
 DATE: 5/5/2022  
  
**DOCUMENT NOT CONSIDERED FINAL  
 UNLESS ALL SIGNATURES COMPLETED**



PHASE I DETAIL

5/5/2022  
 P:\2019\914\01\B-5947\Traffic Design\WZTC\Design\TMP\Sheets\Detail\B-5947\_TMP\_05\_Phi.dgn  
 User: AHayes