

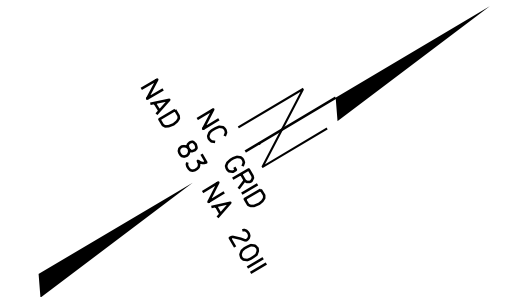
8/17/2019

25

30

35

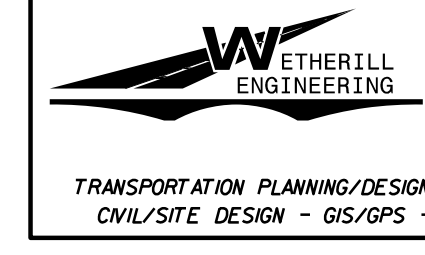
-TEMP. SHORING



MARK D. SMITH  
NO DEED REFERENCE  
④

ASPHALT PAVEMENT REMOVAL

NOTE:  
RADI FOR DRIVEWAY  
TURNOUT IS 10'



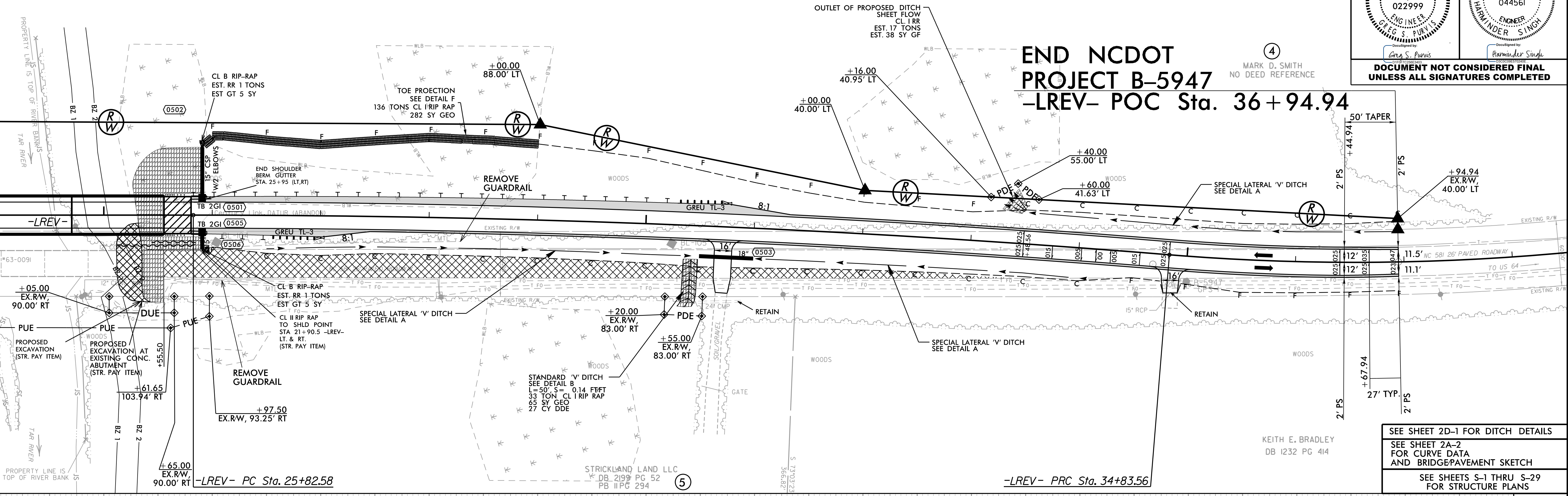
1223 Jones Franklin Rd.  
Raleigh, N.C. 27606  
License No. F-0377  
Bus: 919 851 8077  
Fax: 919 851 8107

|                                                                  |                                  |
|------------------------------------------------------------------|----------------------------------|
| PROJECT REFERENCE NO.<br><b>B-5947</b>                           | SHEET NO.<br><b>5</b>            |
| RW SHEET NO.                                                     |                                  |
| ROADWAY DESIGN<br>5/10/2022 ENGINEER                             | HYDRAULICS<br>5/10/2022 ENGINEER |
|                                                                  |                                  |
| DOCUMENT NOT CONSIDERED FINAL<br>UNLESS ALL SIGNATURES COMPLETED |                                  |

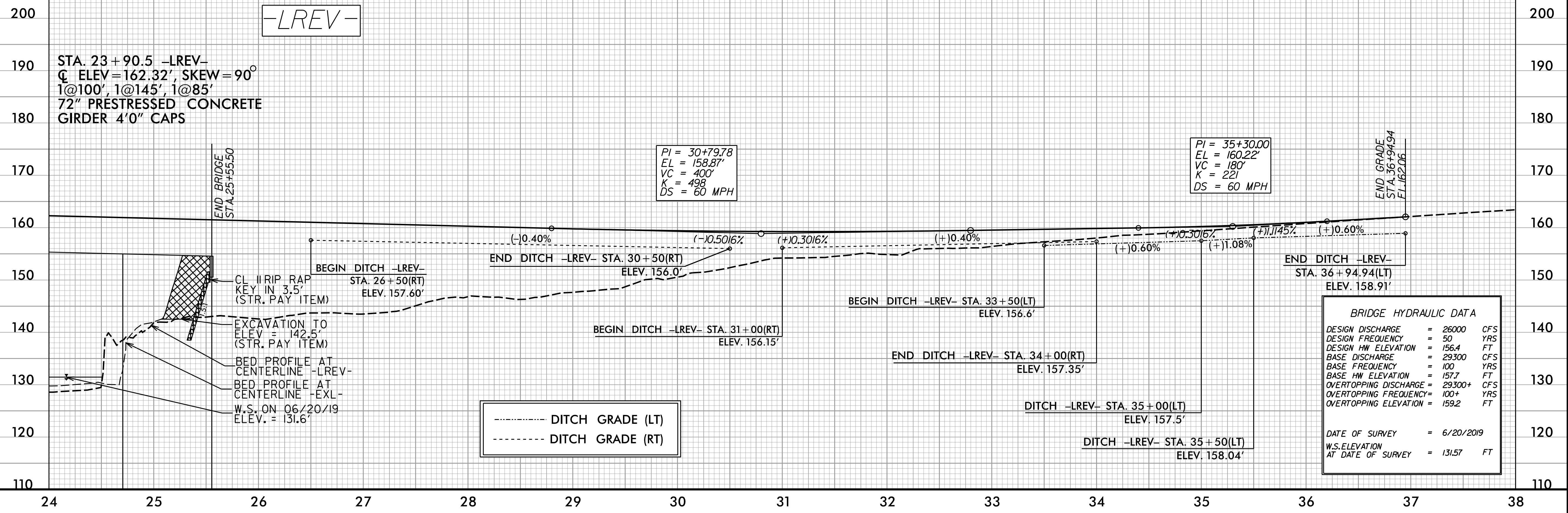
# END NCDOT PROJECT B-5947 -LREV- POC Sta. 36+94.94

MARK D. SMITH  
NO DEED REFERENCE  
④

MATCHLINE SHEET 4 -LREV- STA. 24+00.00



SEE SHEET 2D-1 FOR DITCH DETAILS  
SEE SHEET 2A-2 FOR CURVE DATA AND BRIDGE PAVEMENT SKETCH  
SEE SHEETS S-1 THRU S-29 FOR STRUCTURE PLANS



STA. 23+90.5 -LREV-  
 Q ELEV = 162.32', SKEW = 90°  
 1@100', 1@145', 1@85'  
 72" PRESTRESSED CONCRETE  
 GIRDER 4'0" CAPS

END BRIDGE  
STA. 25+55.50

PI = 30+79.78  
 EL = 158.87'  
 VC = 400'  
 K = 498  
 DS = 60 MPH

PI = 35+30.00  
 EL = 160.22'  
 VC = 180'  
 K = 22  
 DS = 60 MPH

END GRADE  
STA. 36+94.94  
ELL 162.06

| BRIDGE HYDRAULIC DATA            |              |
|----------------------------------|--------------|
| DESIGN DISCHARGE                 | = 26000 CFS  |
| DESIGN FREQUENCY                 | = 50 YRS     |
| DESIGN HW ELEVATION              | = 156.4 FT   |
| BASE DISCHARGE                   | = 29300 CFS  |
| BASE FREQUENCY                   | = 100 YRS    |
| BASE HW ELEVATION                | = 157.7 FT   |
| OVERTOPPING DISCHARGE            | = 29300+ CFS |
| OVERTOPPING FREQUENCY            | = 100+ YRS   |
| OVERTOPPING ELEVATION            | = 159.2 FT   |
| DATE OF SURVEY                   | = 6/20/2019  |
| W.S. ELEVATION AT DATE OF SURVEY | = 131.57 FT  |

----- DITCH GRADE (LT)  
 - - - - - DITCH GRADE (RT)

REVISIONS

3/28/2022  
B-5947\_rdy\_psh\_5.dgn