

5/14/2021

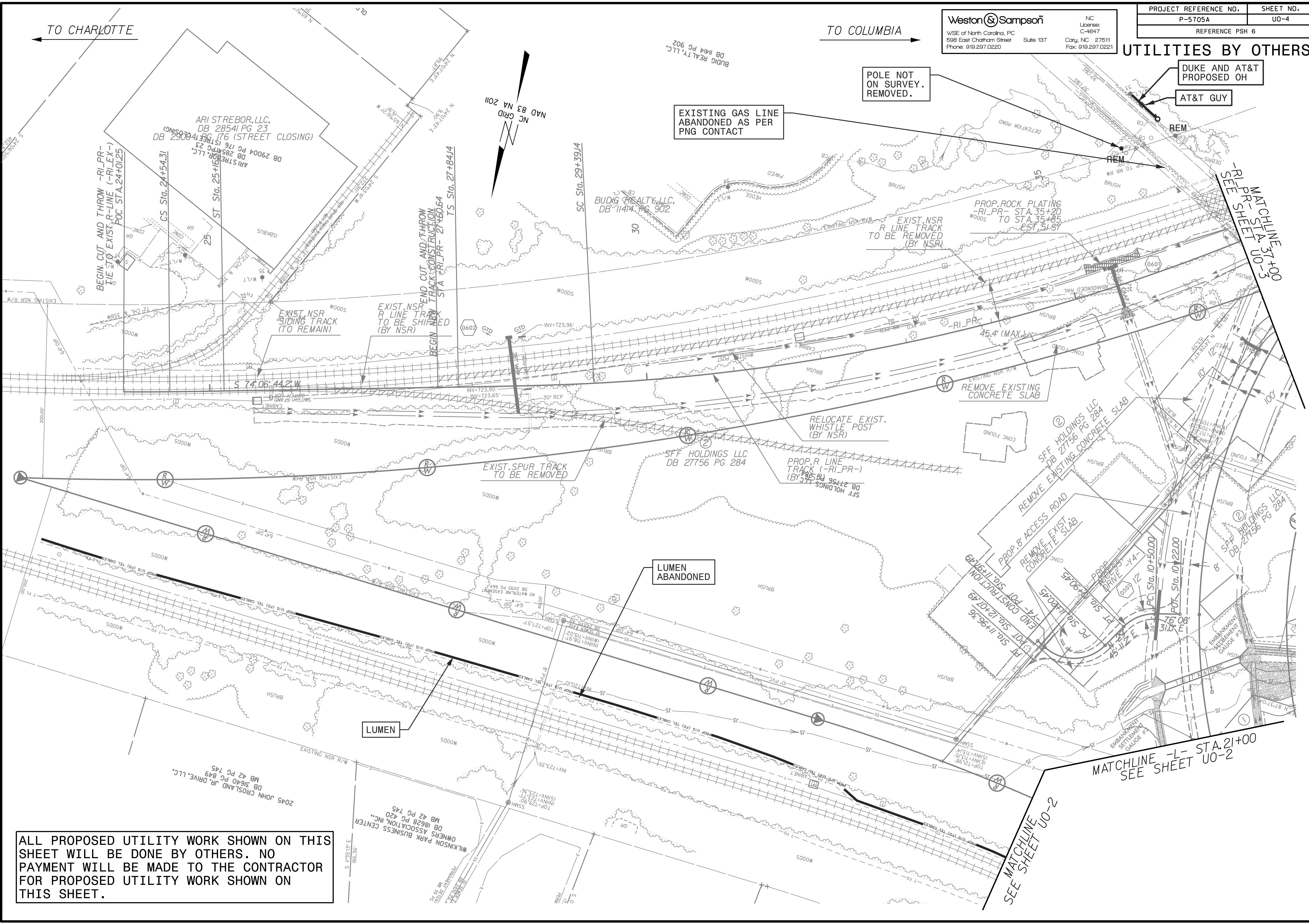
TO CHARLOTTE

TO COLUMBIA

Weston Sampson
 NC License: C-4647
 Cary, NC 27511
 Phone: 919.297.0220 Suite 137 Fax: 919.297.0221
 598 East Chatham Street

PROJECT REFERENCE NO.	SHEET NO.
P-5705A	UO-4
REFERENCE PSH 6	

UTILITIES BY OTHERS



ALL PROPOSED UTILITY WORK SHOWN ON THIS SHEET WILL BE DONE BY OTHERS. NO PAYMENT WILL BE MADE TO THE CONTRACTOR FOR PROPOSED UTILITY WORK SHOWN ON THIS SHEET.

8/13/2021
 neer_065_069_028\10000\Utilities\Coordination\U0-290-007_P5705A-ut-r-dj06-U004_psh.dgn

SEE MATCHLINE UO-2
MATCHLINE -L- STA. 21+00
SEE SHEET UO-2

MATCHLINE 37+00
-R- STA. 37+00
-R- SEE SHEET UO-3

LUMEN

LUMEN ABANDONED

EXISTING GAS LINE
ABANDONED AS PER
PNG CONTACT

POLE NOT
ON SURVEY.
REMOVED.

DUKE AND AT&T
PROPOSED OH

AT&T GUY

PROP. ROCK PLATING
-R- PR- STA. 35+20
TO STA. 35+85
WEST 51-ST

EXIST. NSR
R LINE TRACK
TO BE REMOVED
(BY NSR)

REMOVE EXISTING
CONCRETE SLAB

RELOCATE EXIST.
WHISTLE POST
(BY NSR)

PROP. R LINE
TRACK (-R- PR-)
(BY NSR)

REMOVE EXISTING
CONCRETE SLAB

REMOVE ACCESS ROAD

REMOVE EXIST
CONCRETE SLAB

PROP. 8' ACCESS ROAD

REMOVE EXIST
CONCRETE SLAB

END CONSTRUCTION
-R- STA. 12+07.49
-R- STA. 12+07.49

PROP. 8' ACCESS ROAD

REMOVE EXIST
CONCRETE SLAB

PROP. 8' ACCESS ROAD

REMOVE EXIST
CONCRETE SLAB

PROP. 8' ACCESS ROAD

REMOVE EXIST
CONCRETE SLAB

MATCHLINE -L- STA. 21+00
SEE SHEET UO-2

SEE MATCHLINE UO-2
MATCHLINE -L- STA. 21+00
SEE SHEET UO-2

MATCHLINE 37+00
-R- STA. 37+00
-R- SEE SHEET UO-3

2045 JOHN CROSLAND JR. DRIVE, LLC.
MB 42 PG 745
DB 31640 PG 849

WILKINSON PARK BUSINESS CENTER
OWNERS ASSOCIATION, INC.
DB 18628 PG 420
MB 42 PG 745

BUDIG REALTY, LLC.
DB 11414 PG 902

SFF HOLDINGS LLC
DB 27756 PG 284

SFF HOLDINGS LLC
DB 27756 PG 284

ARI STREBOR, LLC.
DB 28541 PG 23
DB 29004 PG 176 (STREET CLOSING)

ARI STREBOR, LLC.
DB 29004 PG 176 (STREET CLOSING)

ARI STREBOR, LLC.
DB 29004 PG 176 (STREET CLOSING)

NC GRID
MAD 83 NA 2011

BEGIN CUT AND THROW
-R- PR-
TIE TO EXIST. R-LINE (-R- LEX-)
POC STA. 24+01.25

BEGIN CUT AND THROW
-R- PR-
TIE TO EXIST. R-LINE (-R- LEX-)
POC STA. 24+01.25

BEGIN CUT AND THROW
-R- PR-
TIE TO EXIST. R-LINE (-R- LEX-)
POC STA. 24+01.25

EXIST. NSR
SIDING TRACK
(TO REMAIN)

EXIST. NSR
R LINE TRACK
TO BE SHIPPED
(BY NSR)

EXIST. SPUR TRACK
TO BE REMOVED

REMOVE EXISTING
CONCRETE SLAB

REMOVE EXISTING
CONCRETE SLAB

REMOVE EXISTING
CONCRETE SLAB

REMOVE EXISTING
CONCRETE SLAB

REMOVE EXISTING
CONCRETE SLAB

REMOVE EXISTING
CONCRETE SLAB

REMOVE EXISTING
CONCRETE SLAB

REMOVE EXISTING
CONCRETE SLAB

REMOVE EXISTING
CONCRETE SLAB

REMOVE EXISTING
CONCRETE SLAB

REMOVE EXISTING
CONCRETE SLAB

REMOVE EXISTING
CONCRETE SLAB

REMOVE EXISTING
CONCRETE SLAB

REMOVE EXISTING
CONCRETE SLAB

REMOVE EXISTING
CONCRETE SLAB

REMOVE EXISTING
CONCRETE SLAB

REMOVE EXISTING
CONCRETE SLAB

REMOVE EXISTING
CONCRETE SLAB