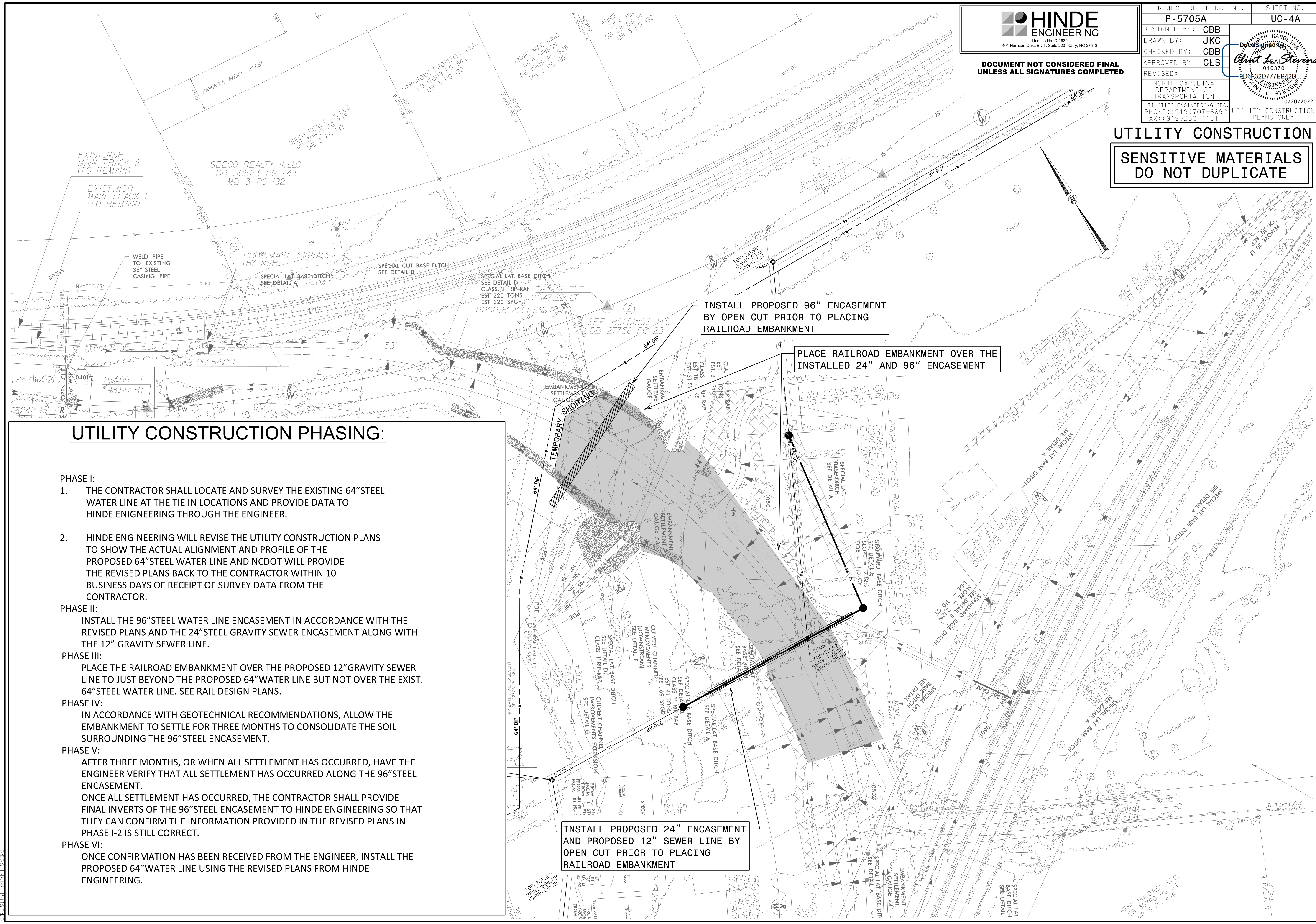


HINDE ENGINEERING
 License No. C-2639
 401 Harrison Oaks Blvd., Suite 220 Cary, NC 27513

**DOCUMENT NOT CONSIDERED FINAL
 UNLESS ALL SIGNATURES COMPLETED**

PROJECT REFERENCE NO. P-5705A	SHEET NO. UC-4A
DESIGNED BY: CDB	
DRAWN BY: JKC	
CHECKED BY: CDB	
APPROVED BY: CLS	
REVISED:	10/20/2022
NORTH CAROLINA DEPARTMENT OF TRANSPORTATION UTILITIES ENGINEERING SECTION PHONE: (919) 707-6690 FAX: (919) 250-4151	
UTILITY CONSTRUCTION PLANS ONLY	

**UTILITY CONSTRUCTION
 SENSITIVE MATERIALS
 DO NOT DUPLICATE**



UTILITY CONSTRUCTION PHASING:

- PHASE I:**
1. THE CONTRACTOR SHALL LOCATE AND SURVEY THE EXISTING 64" STEEL WATER LINE AT THE TIE IN LOCATIONS AND PROVIDE DATA TO HINDE ENGINEERING THROUGH THE ENGINEER.
 2. HINDE ENGINEERING WILL REVISE THE UTILITY CONSTRUCTION PLANS TO SHOW THE ACTUAL ALIGNMENT AND PROFILE OF THE PROPOSED 64" STEEL WATER LINE AND NCDOT WILL PROVIDE THE REVISED PLANS BACK TO THE CONTRACTOR WITHIN 10 BUSINESS DAYS OF RECEIPT OF SURVEY DATA FROM THE CONTRACTOR.
- PHASE II:**
- INSTALL THE 96" STEEL WATER LINE ENCASEMENT IN ACCORDANCE WITH THE REVISED PLANS AND THE 24" STEEL GRAVITY SEWER ENCASEMENT ALONG WITH THE 12" GRAVITY SEWER LINE.
- PHASE III:**
- PLACE THE RAILROAD EMBANKMENT OVER THE PROPOSED 12" GRAVITY SEWER LINE TO JUST BEYOND THE PROPOSED 64" WATER LINE BUT NOT OVER THE EXIST. 64" STEEL WATER LINE. SEE RAIL DESIGN PLANS.
- PHASE IV:**
- IN ACCORDANCE WITH GEOTECHNICAL RECOMMENDATIONS, ALLOW THE EMBANKMENT TO SETTLE FOR THREE MONTHS TO CONSOLIDATE THE SOIL SURROUNDING THE 96" STEEL ENCASEMENT.
- PHASE V:**
- AFTER THREE MONTHS, OR WHEN ALL SETTLEMENT HAS OCCURRED, HAVE THE ENGINEER VERIFY THAT ALL SETTLEMENT HAS OCCURRED ALONG THE 96" STEEL ENCASEMENT. ONCE ALL SETTLEMENT HAS OCCURRED, THE CONTRACTOR SHALL PROVIDE FINAL INVERTS OF THE 96" STEEL ENCASEMENT TO HINDE ENGINEERING SO THAT THEY CAN CONFIRM THE INFORMATION PROVIDED IN THE REVISED PLANS IN PHASE I-2 IS STILL CORRECT.
- PHASE VI:**
- ONCE CONFIRMATION HAS BEEN RECEIVED FROM THE ENGINEER, INSTALL THE PROPOSED 64" WATER LINE USING THE REVISED PLANS FROM HINDE ENGINEERING.

**INSTALL PROPOSED 96" ENCASEMENT
 BY OPEN CUT PRIOR TO PLACING
 RAILROAD EMBANKMENT**

**PLACE RAILROAD EMBANKMENT OVER THE
 INSTALLED 24" AND 96" ENCASEMENT**

**INSTALL PROPOSED 24" ENCASEMENT
 AND PROPOSED 12" SEWER LINE BY
 OPEN CUT PRIOR TO PLACING
 RAILROAD EMBANKMENT**

S:\CUT-2022-1529\PROJECTS\2018\A2018810.000_HNTB_P-5705A\Design\Utilities\Engineering\UC\Pro\J\P-5705A_ut_rdy4_UC04A_psh_Const_Phasing.dgn
 10/20/2022 15:29
 33,838,811