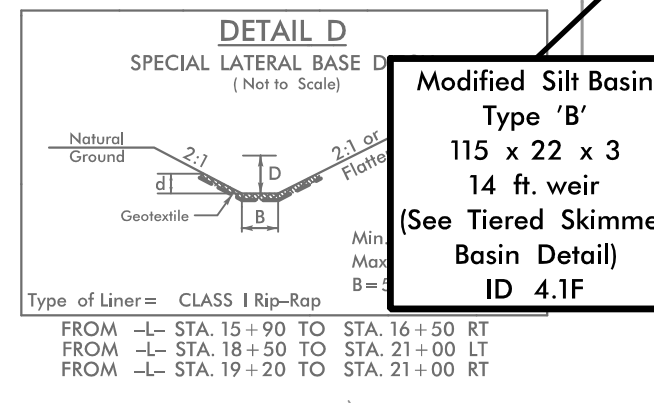
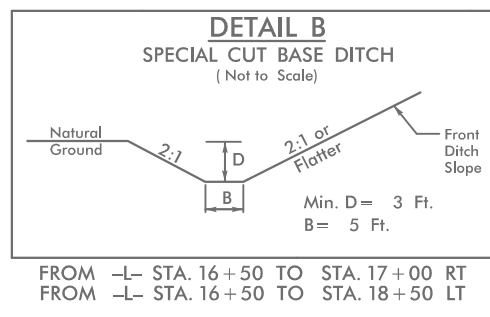
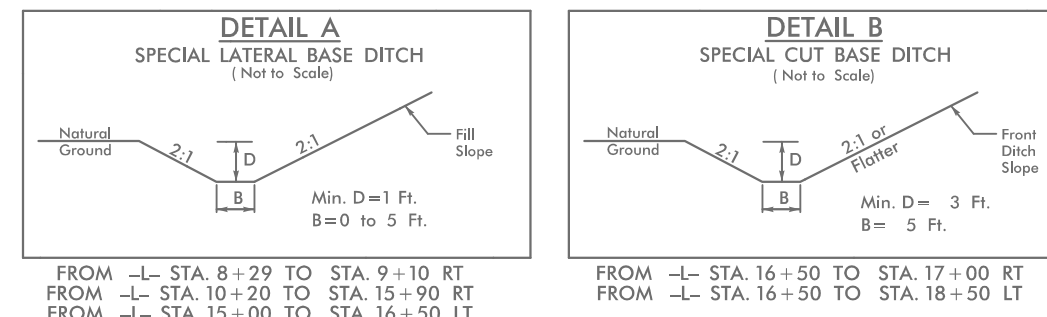
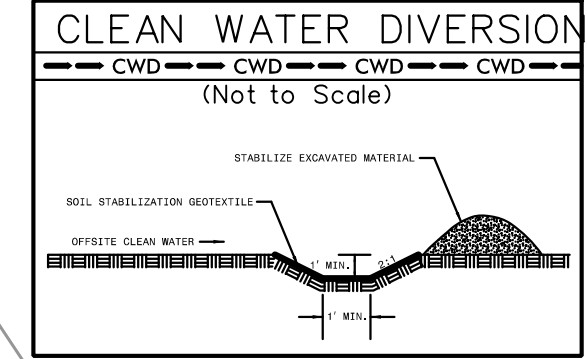


Place Matting for Erosion Control on Fill or Ditch Slope as Work Allows.
 -L- Sta. 13+50 to Sta. 21+00 RT
 -L- Sta. 19+50 to Sta. 21+00 LT

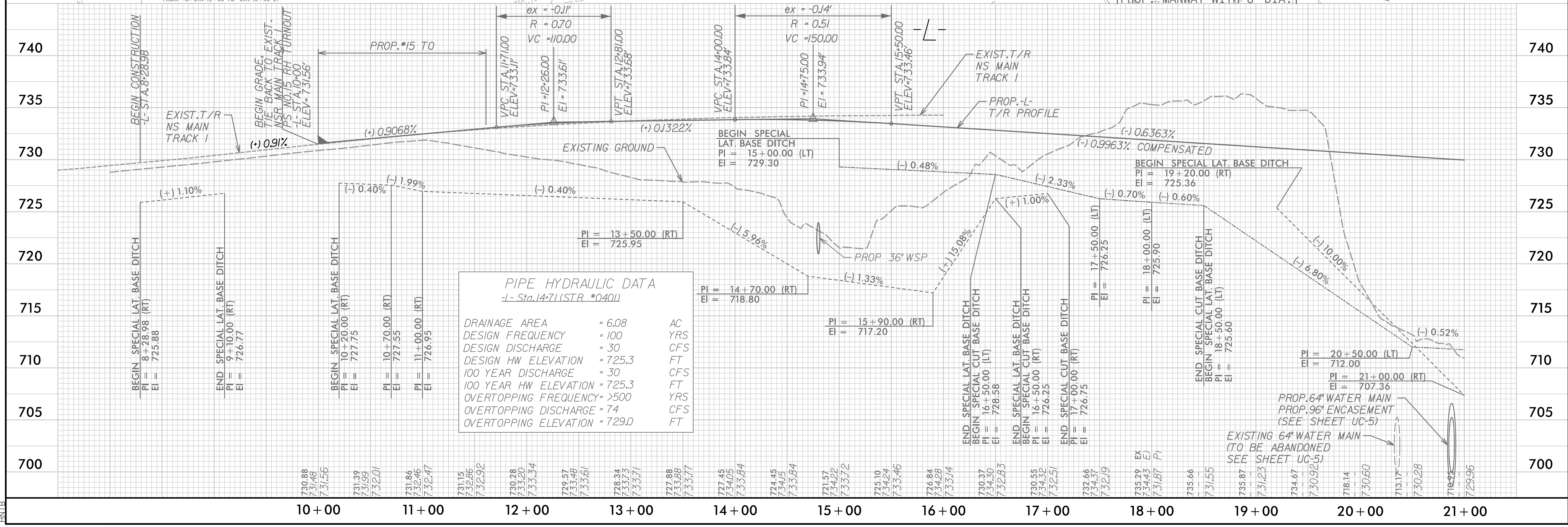


Modified Silt Basin Type 'B'
 115 x 22 x 3
 14 ft. weir
 (See Tiered Skimmer Basin Detail ID 4.1F)

115 x 22 x 3
 2.0 inch Skimmer with 1.625 inch Orifice Diameter
 14 ft. weir
 (See Tiered Skimmer Basin Detail ID 4.1F)

Modified Silt Basin Type 'B'
 25 x 17 x 2
 4 ft. weir
 (See Tiered Skimmer Basin Detail ID 5.1B)

25 x 17 x 2
 1.5 inch Skimmer with 0.25 inch Orifice Diameter
 4 ft. weir
 (See Tiered Skimmer Basin Detail ID 5.1B)



PIPE HYDRAULIC DATA
 -L- Sta. 14+71 (STR #0401)

DRAINAGE AREA	= 6.08	AC
DESIGN FREQUENCY	= 100	YRS
DESIGN DISCHARGE	= 30	CFS
DESIGN HW ELEVATION	= 725.3	FT
100 YEAR DISCHARGE	= 30	CFS
100 YEAR HW ELEVATION	= 725.3	FT
OVERTOPPING FREQUENCY	= >500	YRS
OVERTOPPING DISCHARGE	= 74	CFS
OVERTOPPING ELEVATION	= 729.0	FT

11/26/2022-EC_psh_04.dgn