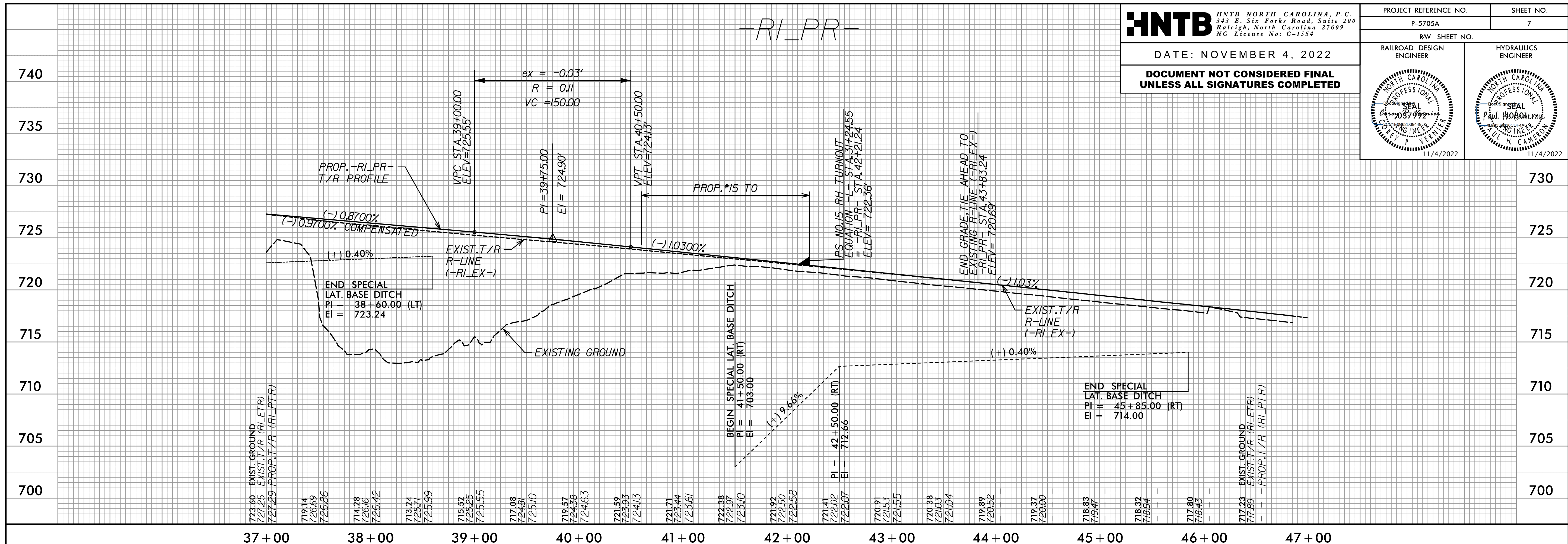
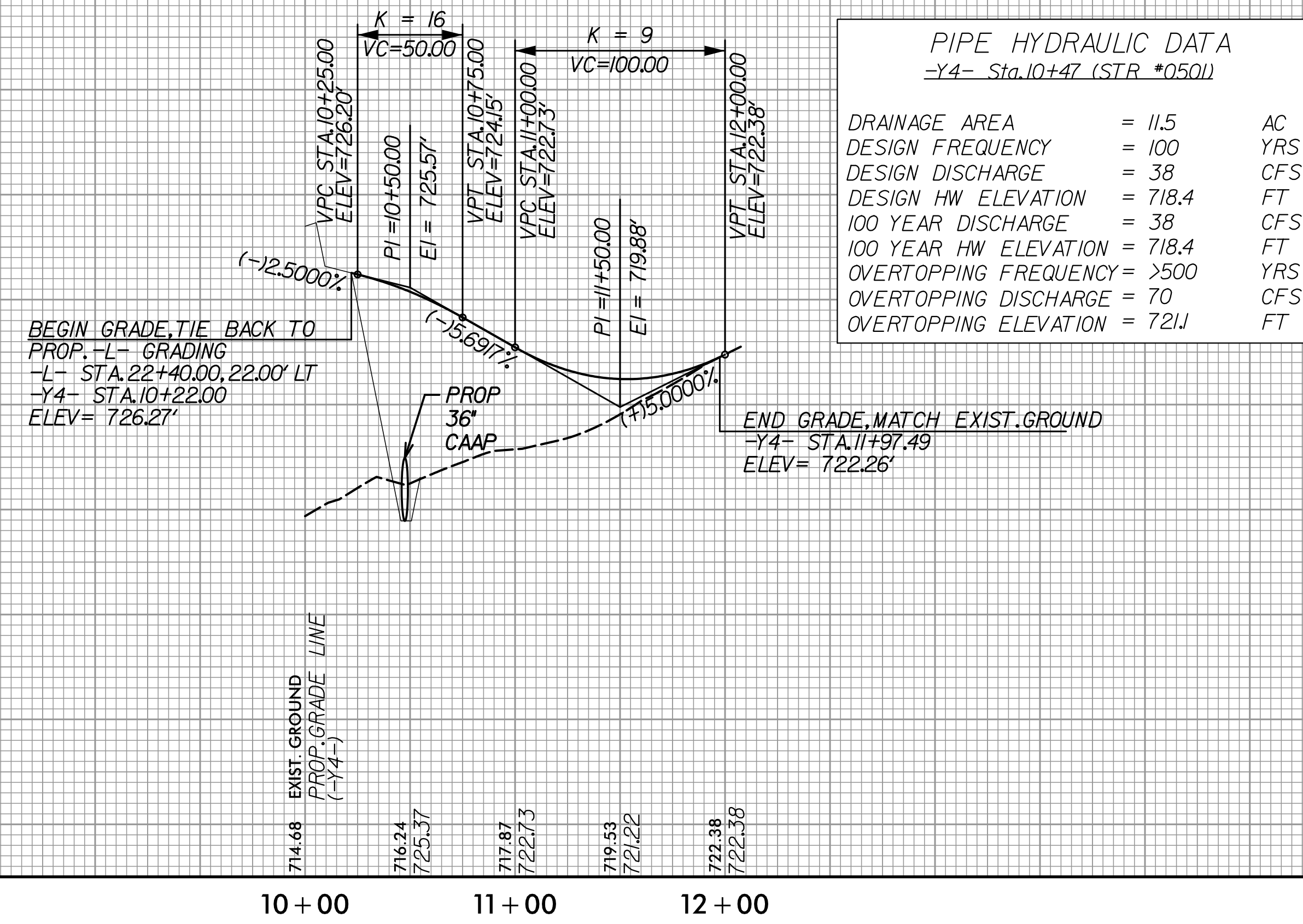


DATE: NOVEMBER 4, 2022

**DOCUMENT NOT CONSIDERED FINAL
UNLESS ALL SIGNATURES COMPLETED**



-Y4-



PIPE HYDRAULIC DATA
-Y4- Sta. 10+47 (STR #050)

DRAINAGE AREA	= 11.5	AC
DESIGN FREQUENCY	= 100	YRS
DESIGN DISCHARGE	= 38	CFS
DESIGN HW ELEVATION	= 718.4	FT
100 YEAR DISCHARGE	= 38	CFS
100 YEAR HW ELEVATION	= 718.4	FT
OVERTOPPING FREQUENCY	= >500	YRS
OVERTOPPING DISCHARGE	= 70	CFS
OVERTOPPING ELEVATION	= 721.1	FT