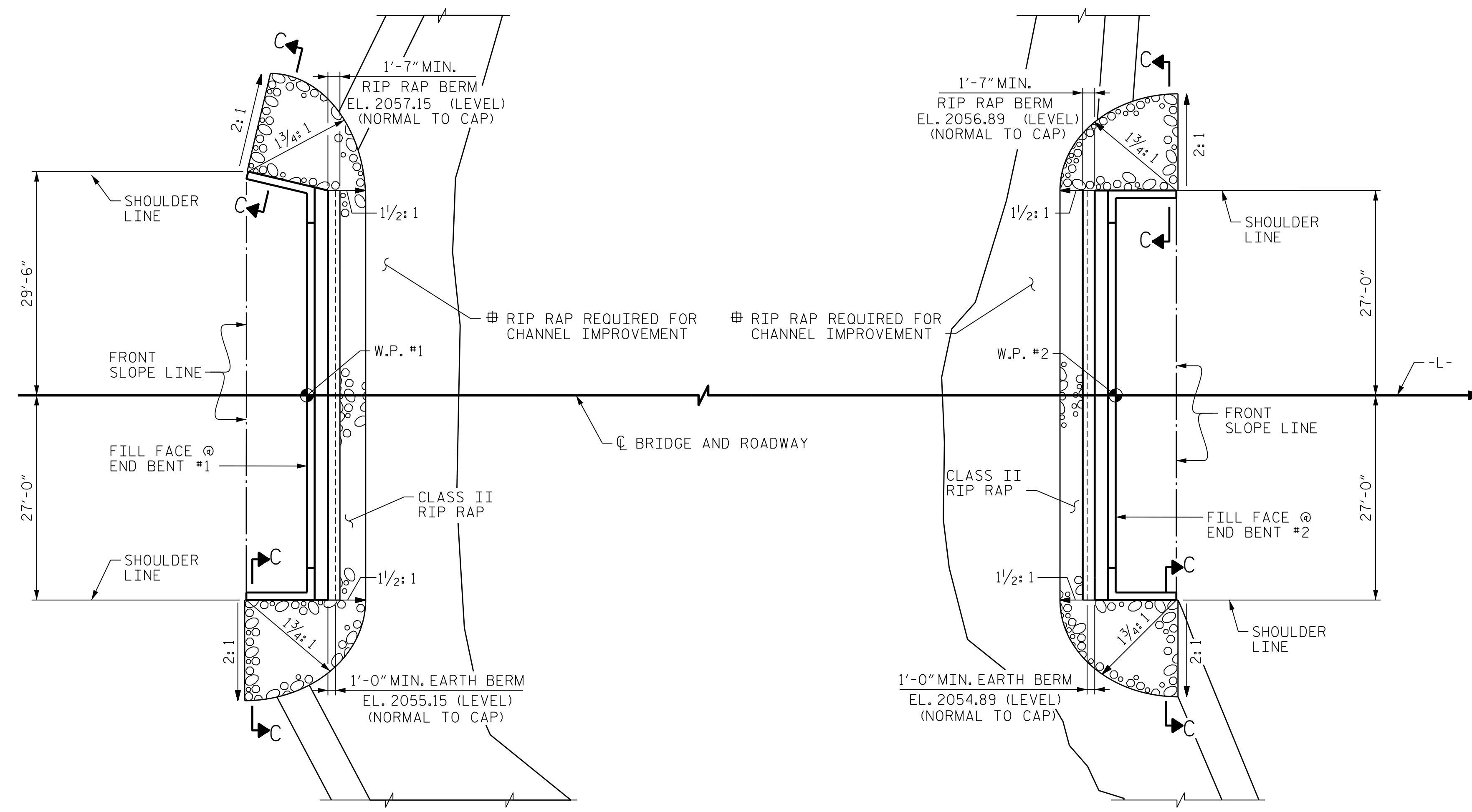


PLOT DRIVER: NCDOT STRUCTURES DEFAULT PLOTTER.plt
 PENTABLE: NCDOT STRUCTURES DEFAULT PEN.tbl
 USER: DCARTER
 DATE: 3/31/2021
 TIME: 3:19:20 PM
 FILE: ... \RIP RAP DETAILS

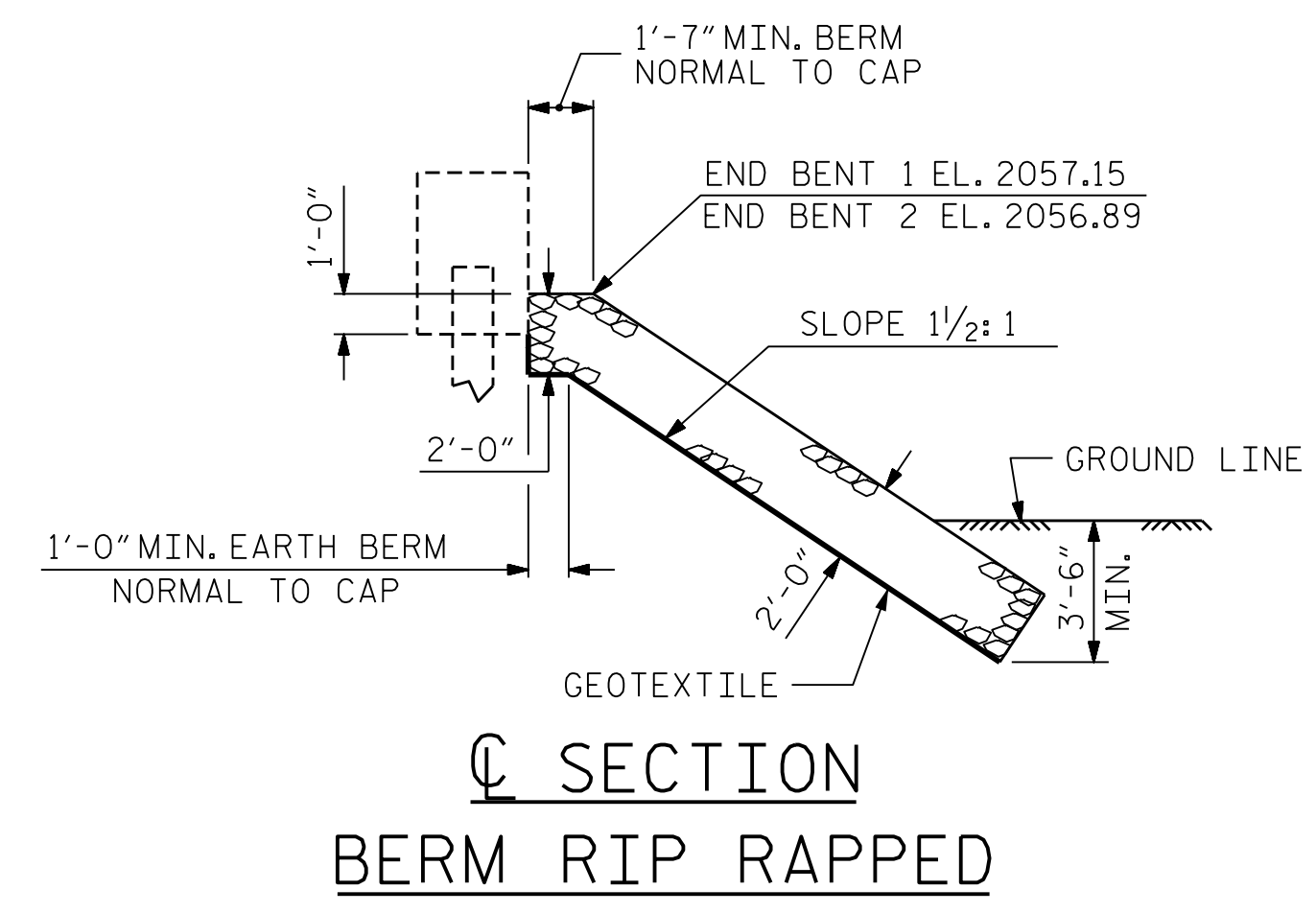


RIP RAP AT END BENT #1

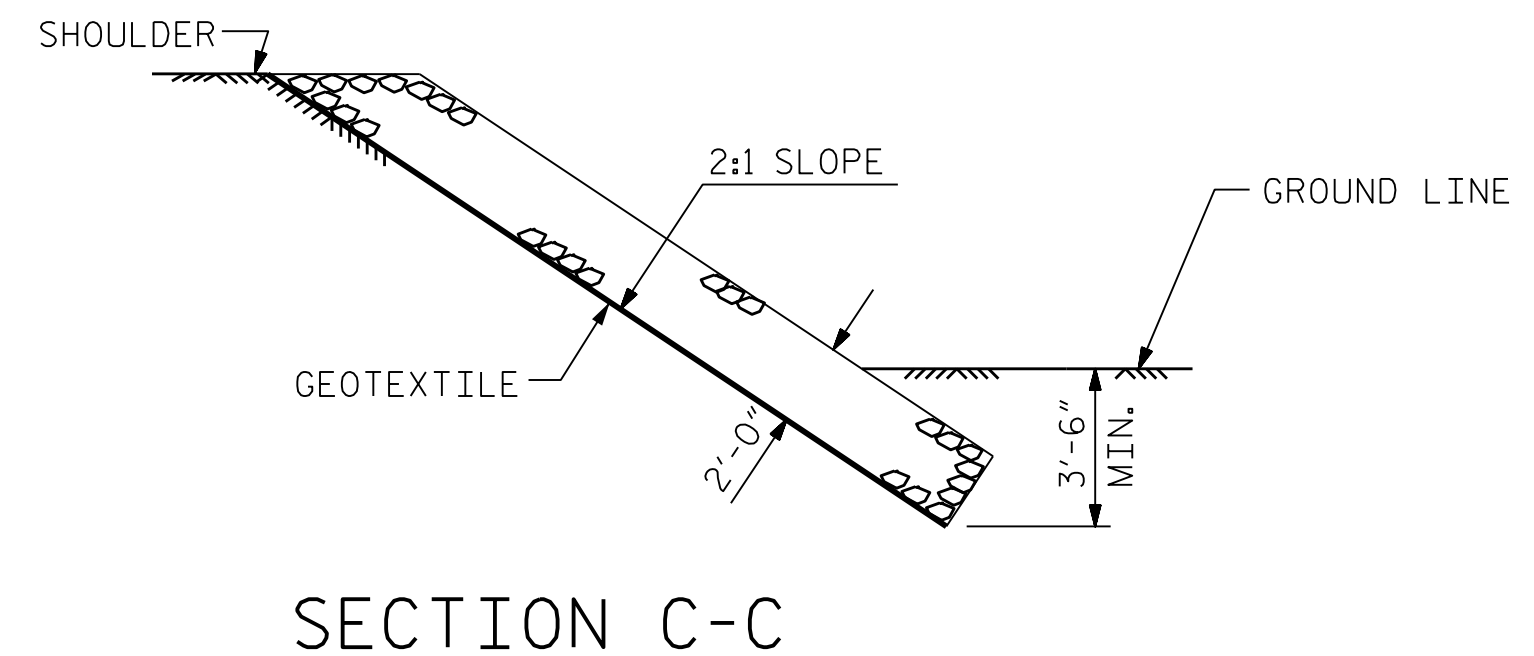
RIP RAP AT END BENT #2

SEE ROADWAY DRAWINGS FOR ADDITIONAL RIP RAP REQUIRED FOR CHANNEL IMPROVEMENT. (ROADWAY DETAIL AND PAY ITEM)

ESTIMATED QUANTITIES (#)		
BRIDGE @ STA. 19+91.00 -L-	RIP RAP CLASS II (2'-0" THICK)	GEOTEXTILE FOR DRAINAGE
	TONS	SQUARE YARDS
END BENT 1	69	76
END BENT 2	64	71

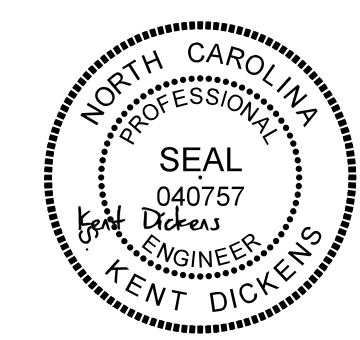


SECTION BERM RIP RAPPED



SECTION C-C

PROJECT NO. 17BP.14.R.212
 JACKSON COUNTY
 STATION: 19+91.00 -L-



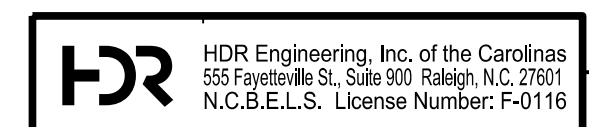
STATE OF NORTH CAROLINA
 DEPARTMENT OF TRANSPORTATION
 RALEIGH

RIP RAP DETAILS

REVISIONS					
NO.	BY:	DATE:	NO.	BY:	DATE:
1	--	--	3	--	--
2	--	--	4	--	--

SHEET NO. S-19
TOTAL SHEETS 20

DES BY: A. PANDOLI DATE: 01/20
 DES CHK: K. DICKENS DATE: 02/20
 DWG BY: B. PETERSON DATE: 08/19
 CHK BY: K. DICKENS DATE: 02/20



1/25/2022
 DOCUMENT NOT CONSIDERED FINAL
 UNLESS ALL SIGNATURES COMPLETED