

**PLAN OF SIDEWALKS**

REINFORCING STEEL IN APPROACH SLAB SIDEWALK IS TYPICAL FOR EACH APPROACH SLAB

BILL OF MATERIAL					
BAR	NUMBER	SIZE	TYPE	LENGTH	WEIGHT
* B1	24	#4	STR	35'-10"	575
* B2	20	#4	STR	11'-7"	155
* G1	188	#4	STR	5'-3"	660
* U1	24	#4	1	3'-0"	49
* EPOXY COATED REINF. STEEL				1439	LBS.
CLASS AA CONCRETE				33.5	CU. YDS.

BAR TYPES	
1	1'-8"
8"	8"

ALL BAR DIMENSIONS ARE OUT TO OUT.

**NOTES**

ALL REINFORCING STEEL IN SIDEWALK SHALL BE EPOXY COATED.

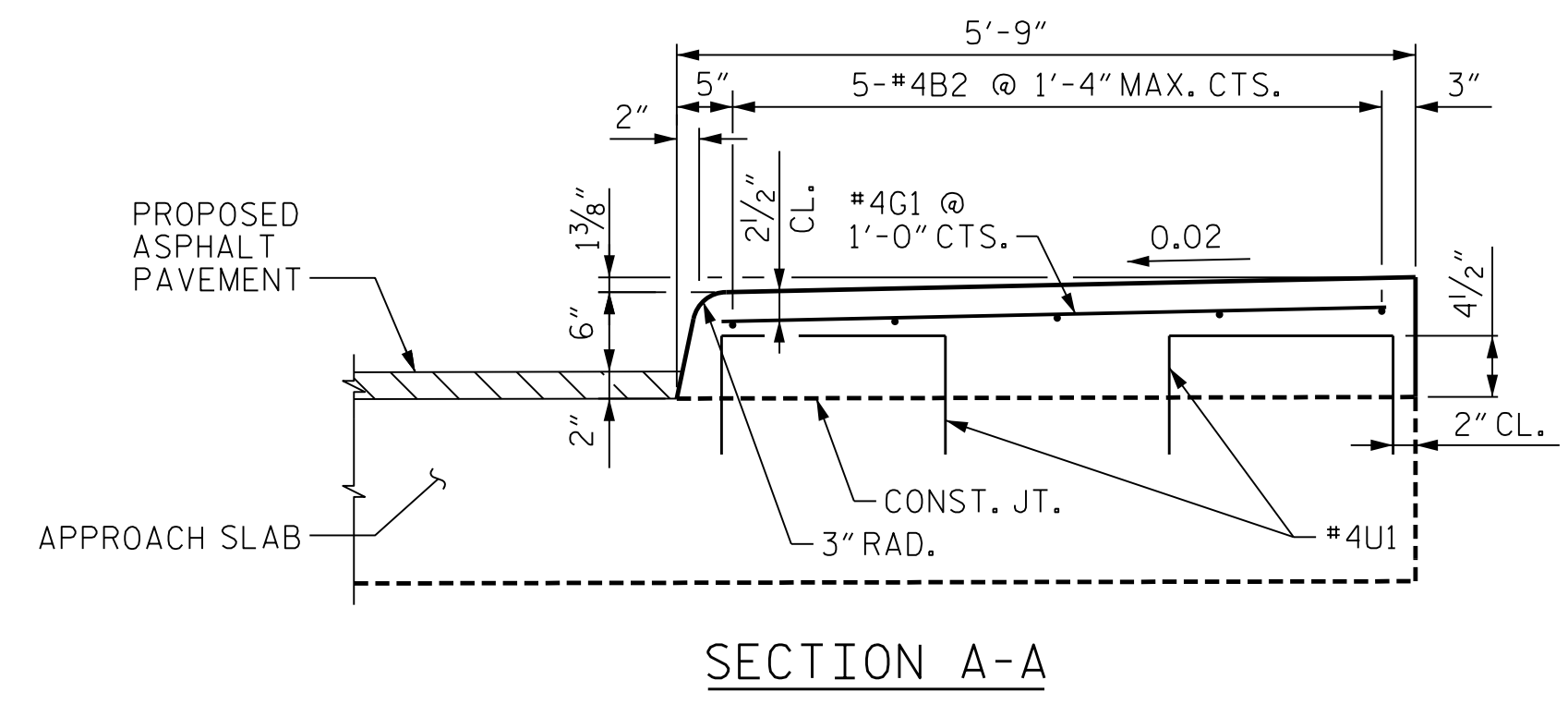
GROOVED CONTRACTION JOINTS, 1/2" IN DEPTH, SHALL BE TOoled IN ALL EXPOSED FACES OF THE SIDEWALK IN ACCORDANCE WITH ARTICLE 825-10(B) OF THE STANDARD SPECIFICATIONS. THE CONTRACTION JOINTS SHALL BE LOCATED AT A SPACING OF 8 FEET TO 10 FEET BETWEEN 1/2" EXPANSION JOINT MATERIAL. NO CONTRACTION JOINTS WILL BE REQUIRED FOR SEGMENTS LESS THAN 10 FEET IN LENGTH.

**GUTTERLINE SIDEWALK THICKNESS**

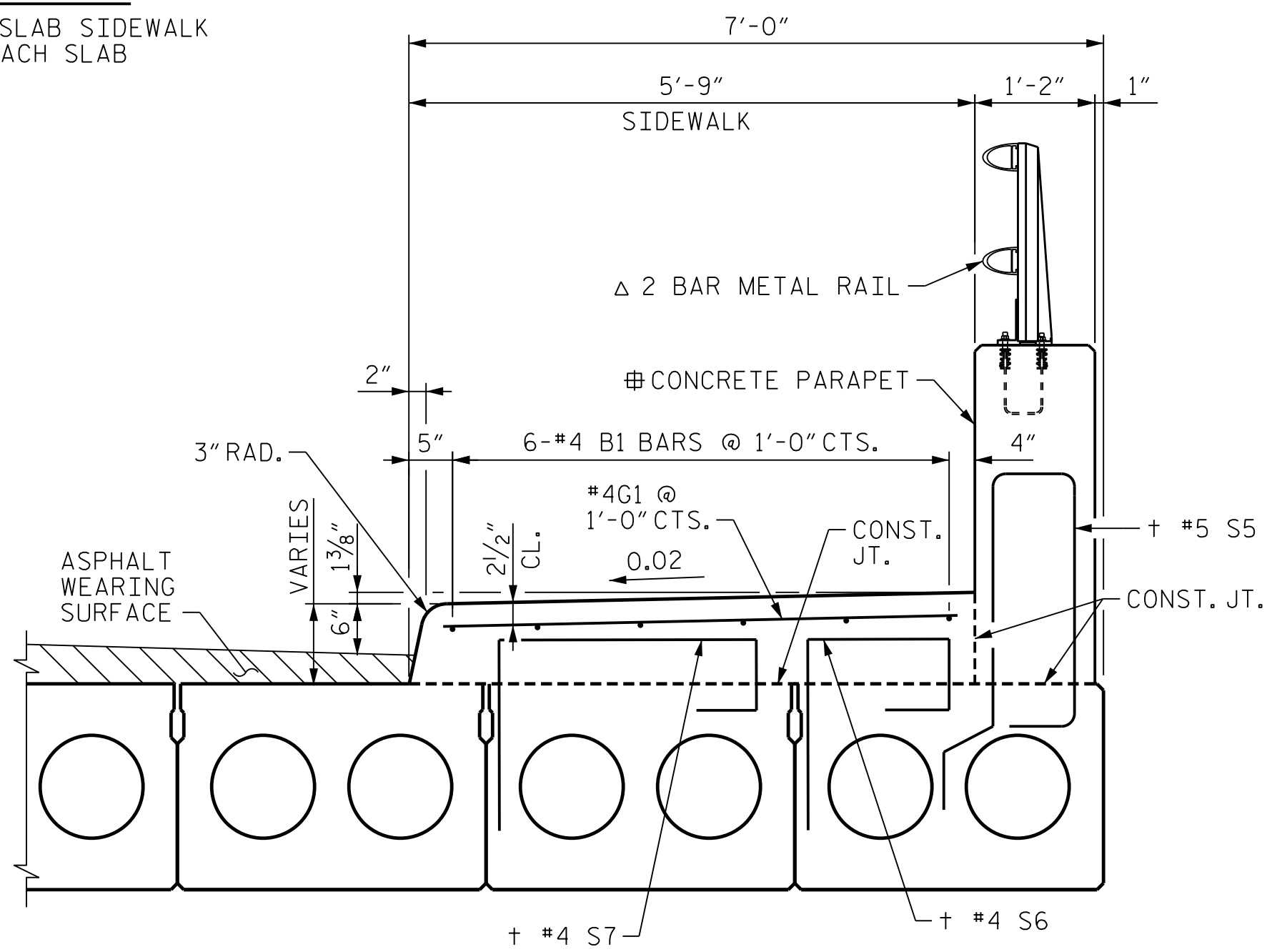
3'-0" X 2'-0" CORED SLAB UNIT	MIN. SIDEWALK THICKNESS	
	@ CL BEARING	@ MID-SPAN
70' UNITS	9 1/2"	8"*

- † = FOR #5 S5, #4 S6 & #4 S7 BARS IN CORED SLAB UNITS, SEE "PRESTRESSED CONCRETE CORED SLAB UNIT" SHEETS.
- ⊕ = FOR DETAILS AND REINFORCING STEEL IN CONCRETE PARAPET AND END POSTS, SEE "CONCRETE PARAPET DETAILS" SHEETS.
- Δ = FOR 2 BAR METAL RAIL DETAILS, SEE "2 BAR METAL RAIL" SHEETS.
- \* = BASED ON THEORETICAL ANTICIPATED CAMBER. ADJUST AS NECESSARY BASED ON ACTUAL MEASURED CAMBER.

PROJECT NO. 17BP.14.R.212  
 JACKSON COUNTY  
 STATION: 19+91.00 -L-



SECTION A-A

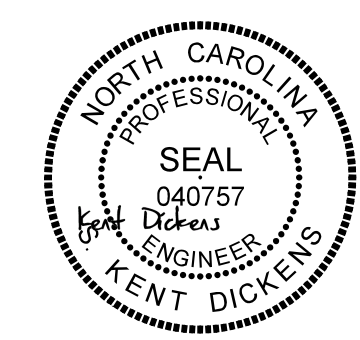


SECTION B-B

**SECTION THRU SIDEWALK**

STATE OF NORTH CAROLINA  
 DEPARTMENT OF TRANSPORTATION  
 RALEIGH

**SUPERSTRUCTURE  
 SIDEWALK  
 DETAILS**



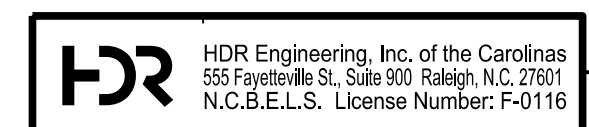
1/25/2022

REVISIONS					
NO.	BY:	DATE:	NO.	BY:	DATE:
1	--	--	3	--	--
2	--	--	4	--	--

SHEET NO.
5-14
TOTAL SHEETS 20

PLOT DRIVER: NCDOT STRUCTURES DEFAULT PLOTTER.plt PENTABLE: NCDOT STRUCTURES DEFAULT PEN.tbl  
 USER: DCARTER DATE: 3/31/2021 TIME: 2:40:54 PM  
 FILE: ... \SUPERSTRUCTURE - SIDEWALK PLAN AND SECTION

DES BY: S. DHONDE	DATE: 12/19	DWG BY: B. PETERSON	DATE: 08/19
DES CHK: J. ROBERTS	DATE: 12/19	CHK BY: K. DICKENS	DATE: 02/20



DOCUMENT NOT CONSIDERED FINAL UNLESS ALL SIGNATURES COMPLETED