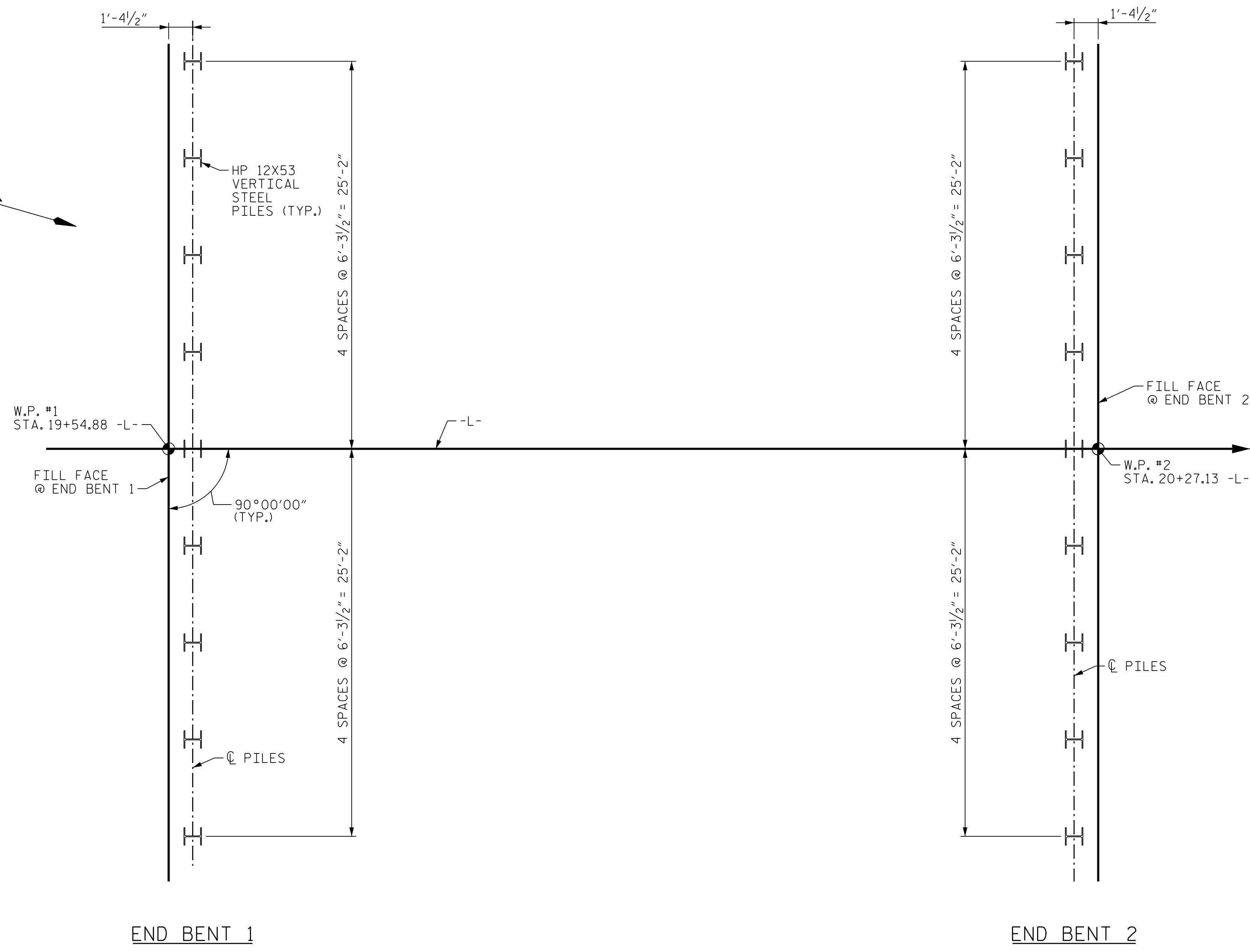


PLOT DRIVER: NCDOT STRUCTURES DEFAULT PLOTTER.plt
PENTABLE: NCDOT STRUCTURES DEFAULT PEN.tbl
USER: DCARTER
DATE: 3/31/2021
TIME: 12:18:08 PM
FILE: ... \GENERAL DRAWING - FOUNDATION LAYOUT.dgn



FOUNDATION LAYOUT

NOTES

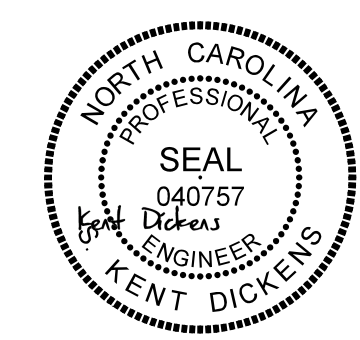
- FOR PILES, SEE SECTION 450 OF THE STANDARD SPECIFICATIONS.
- PILES AT END BENT NO.1 ARE DESIGNED FOR A FACTORED RESISTANCE OF 105 TONS PER PILE.
- DRIVE PILES AT END BENT NO.1 TO A REQUIRED DRIVING RESISTANCE OF 175 TONS PER PILE.
- PILES AT END BENT NO.2 ARE DESIGNED FOR A FACTORED RESISTANCE OF 105 TONS PER PILE.
- DRIVE PILES AT END BENT NO.2 TO A REQUIRED DRIVING RESISTANCE OF 175 TONS PER PILE.
- DRILLED-IN PILES ARE REQUIRED FOR THE PILES AT END BENT NO.2. EXCAVATE HOLES AT PILE LOCATIONS TO ELEVATION 2046 FT (LT) AND 2042 FT (RT). FOR PILE EXCAVATION, SEE SECTION 450 OF THE STANDARD SPECIFICATIONS.
- CONCRETE IS REQUIRED TO FILL HOLES FOR PILE EXCAVATION AT END BENT NO. 2.

PROJECT NO. 17BP.14.R.212
JACKSON COUNTY
 STATION: 19+91.00 -L-

SHEET 2 OF 3

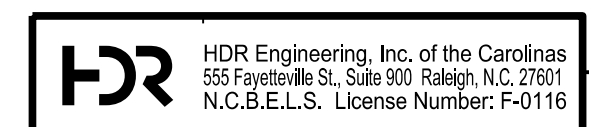
STATE OF NORTH CAROLINA
 DEPARTMENT OF TRANSPORTATION
 RALEIGH

GENERAL DRAWING
 BRIDGE ON SR 1336 (MONTEITH GAP RD.)
 OVER CULLOWHEE CREEK BETWEEN
 SR 1002 (OLD CULLOWHEE RD.) AND
 SR 1337 (LEDBETTER RD.)



1/25/2022

DES BY: S. DHONDE	DATE: 12/19	DWG BY: B. PETERSON	DATE: 08/19
DES CHK: J. ROBERTS	DATE: 12/19	CHK BY: K. DICKENS	DATE: 02/20



DOCUMENT NOT CONSIDERED FINAL UNLESS ALL SIGNATURES COMPLETED

REVISIONS						SHEET NO. S-2 TOTAL SHEETS 20
NO.	BY:	DATE:	NO.	BY:	DATE:	
1	--	--	3	--	--	
2	--	--	4	--	--	