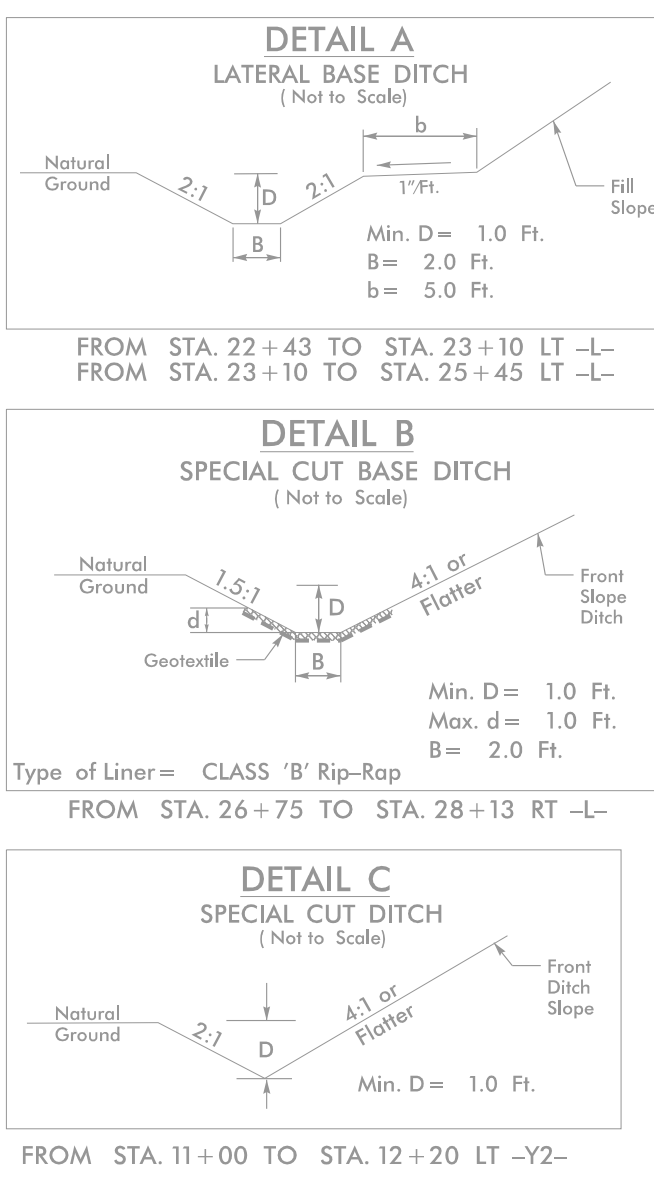


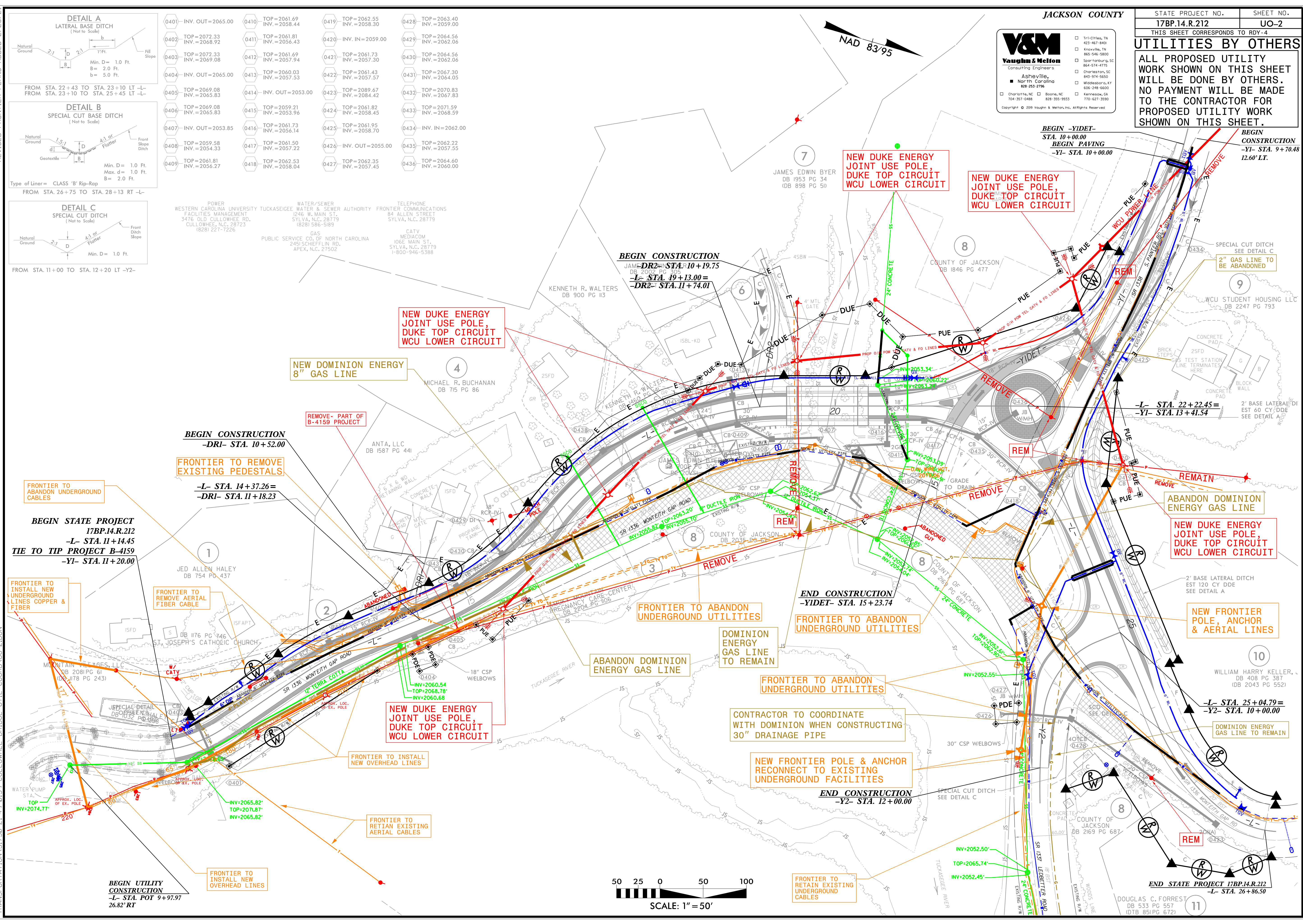
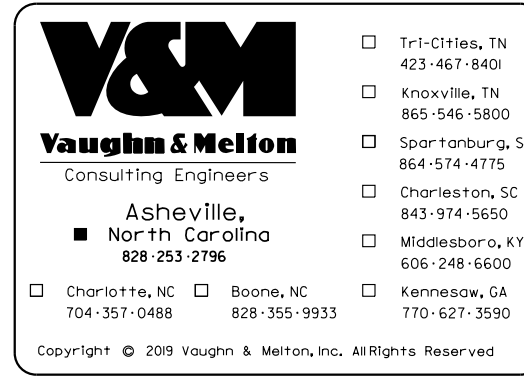
25% UO PLANS 12/31/18
 DUKE PLANS ADDED 4/18/19
 REVISED DUKE PLANS ADDED 9/12/19
 MBB PLANS ADDED 12/20/19
 FRONTIER PLANS ADDED 2/19/20
 DOMINION ENERGY PLANS ADDED 5/13/20
 REVISED FRONTIER PLANS ADDED 12/3/20
 REVISED DOMINION ENERGY PLANS ADDED 2/11/21
 REVISED FRONTIER PLANS ADDED 2/25/21



0401- INV. OUT=2065.00	0410- TOP=2061.69 INV.=2058.44	0419- TOP=2062.55 INV.=2058.30	0428- TOP=2063.40 INV.=2059.00
0402- TOP=2072.33 INV.=2068.92	0411- TOP=2061.81 INV.=2056.43	0420- INV. IN=2059.00	0429- TOP=2064.56 INV.=2062.06
0403- TOP=2072.33 INV.=2069.08	0412- TOP=2061.69 INV.=2057.94	0421- TOP=2061.73 INV.=2057.30	0430- TOP=2064.56 INV.=2062.06
0404- INV. OUT=2065.00	0413- TOP=2060.03 INV.=2057.53	0422- TOP=2061.43 INV.=2057.57	0431- TOP=2067.30 INV.=2064.05
0405- TOP=2069.08 INV.=2065.83	0414- INV. OUT=2063.00	0423- TOP=2089.67 INV.=2084.42	0432- TOP=2070.83 INV.=2067.83
0406- TOP=2069.08 INV.=2065.83	0415- TOP=2059.21 INV.=2053.96	0424- TOP=2061.82 INV.=2058.45	0433- TOP=2071.59 INV.=2068.59
0407- INV. OUT=2053.85	0416- TOP=2061.73 INV.=2056.14	0425- TOP=2061.95 INV.=2058.70	0434- INV. IN=2062.00
0408- TOP=2059.58 INV.=2054.33	0417- TOP=2061.50 INV.=2057.22	0426- INV. OUT=2055.00	0435- TOP=2062.22 INV.=2057.35
0409- TOP=2061.81 INV.=2056.27	0418- TOP=2062.53 INV.=2058.04	0427- TOP=2062.35 INV.=2057.45	0436- TOP=2064.40 INV.=2060.00

POWER WESTERN CAROLINA UNIVERSITY TUCKASEE TUCKASEE WATER & SEWER TUCKASEE WATER & SEWER AUTHORITY FRONTIER COMMUNICATIONS
 FACILITIES MANAGEMENT 3476 OLD CULLOWHEE RD. CULLOWHEE, N.C. 28723 (828) 227-7226
 GAS PUBLIC SERVICE CO. OF NORTH CAROLINA 2451 SCHEFFLIN RD. APEX, N.C. 27502
 CATV CATV MEDIA COM 109E MAIN ST. SYLVIA, N.C. 28779 1-800-946-5388
 TELEPHONE FRONTIER COMMUNICATIONS 84 ALLEN STREET SYLVIA, N.C. 28779

ALL PROPOSED UTILITY WORK SHOWN ON THIS SHEET WILL BE DONE BY OTHERS. NO PAYMENT WILL BE MADE TO THE CONTRACTOR FOR PROPOSED UTILITY WORK SHOWN ON THIS SHEET.



TRANSPORTATION 31730-21-49-0159 CULLOWHEE BRIDGE UTIL. COORDIN. UO-2.DGN

