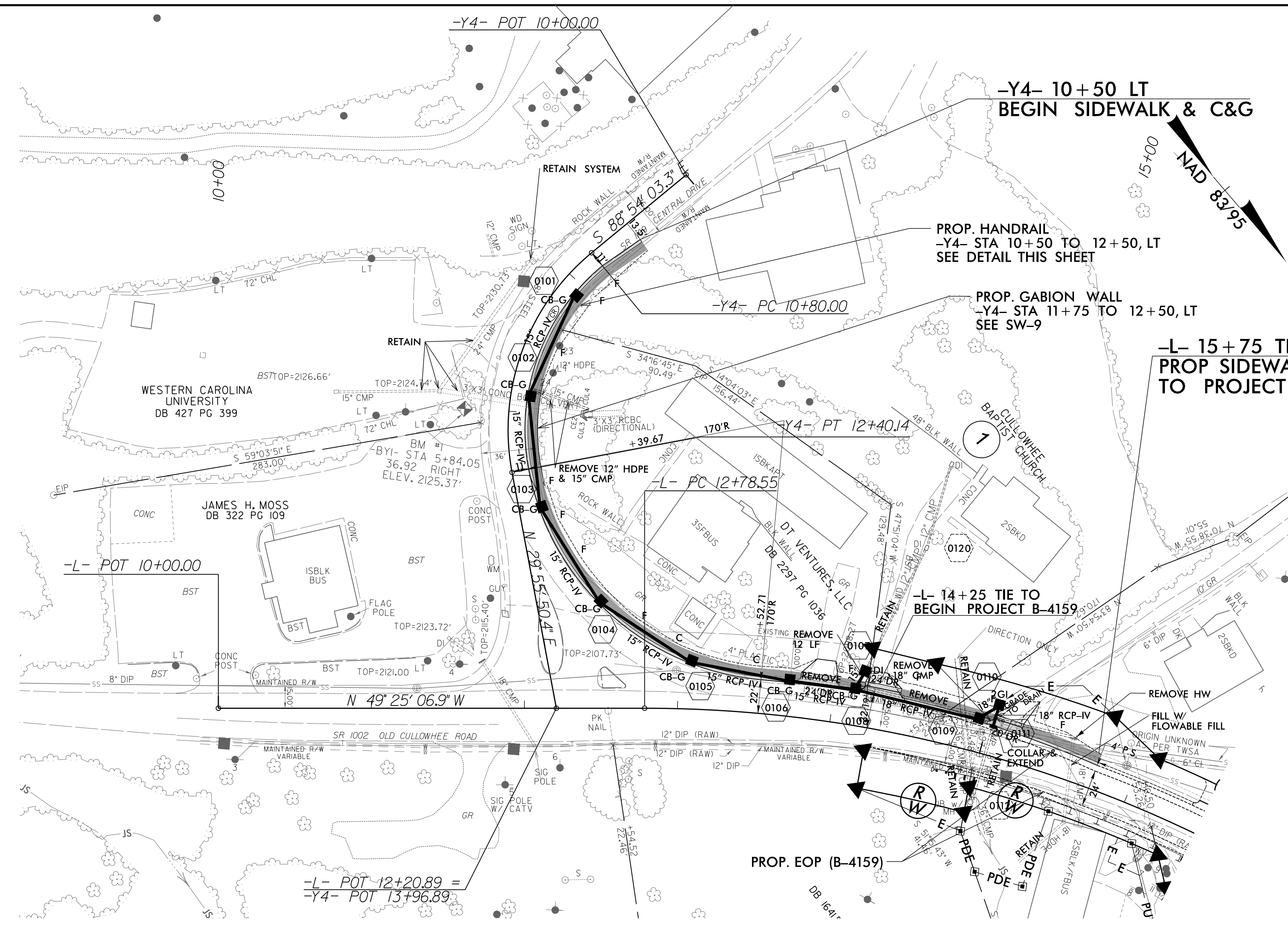


8/17/99

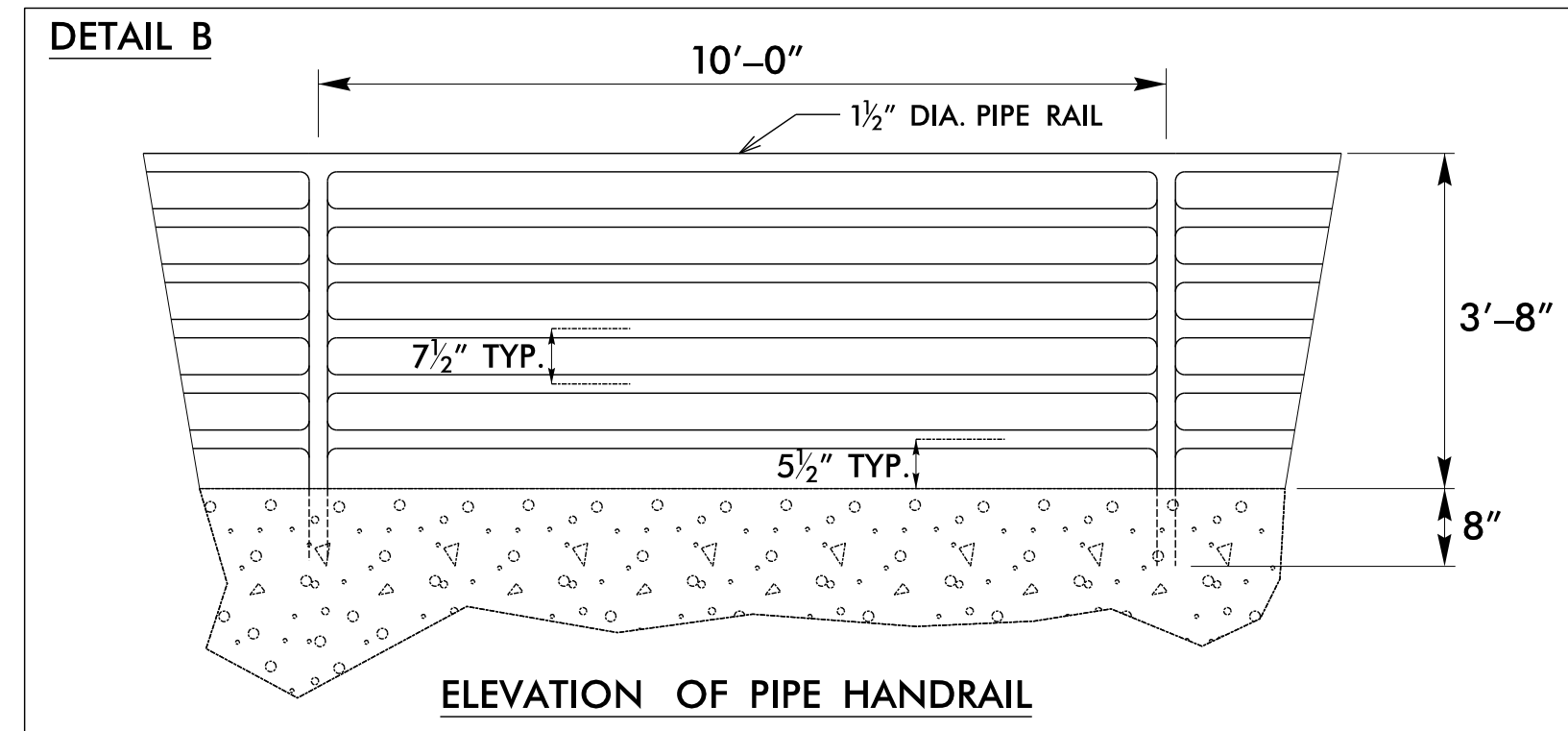
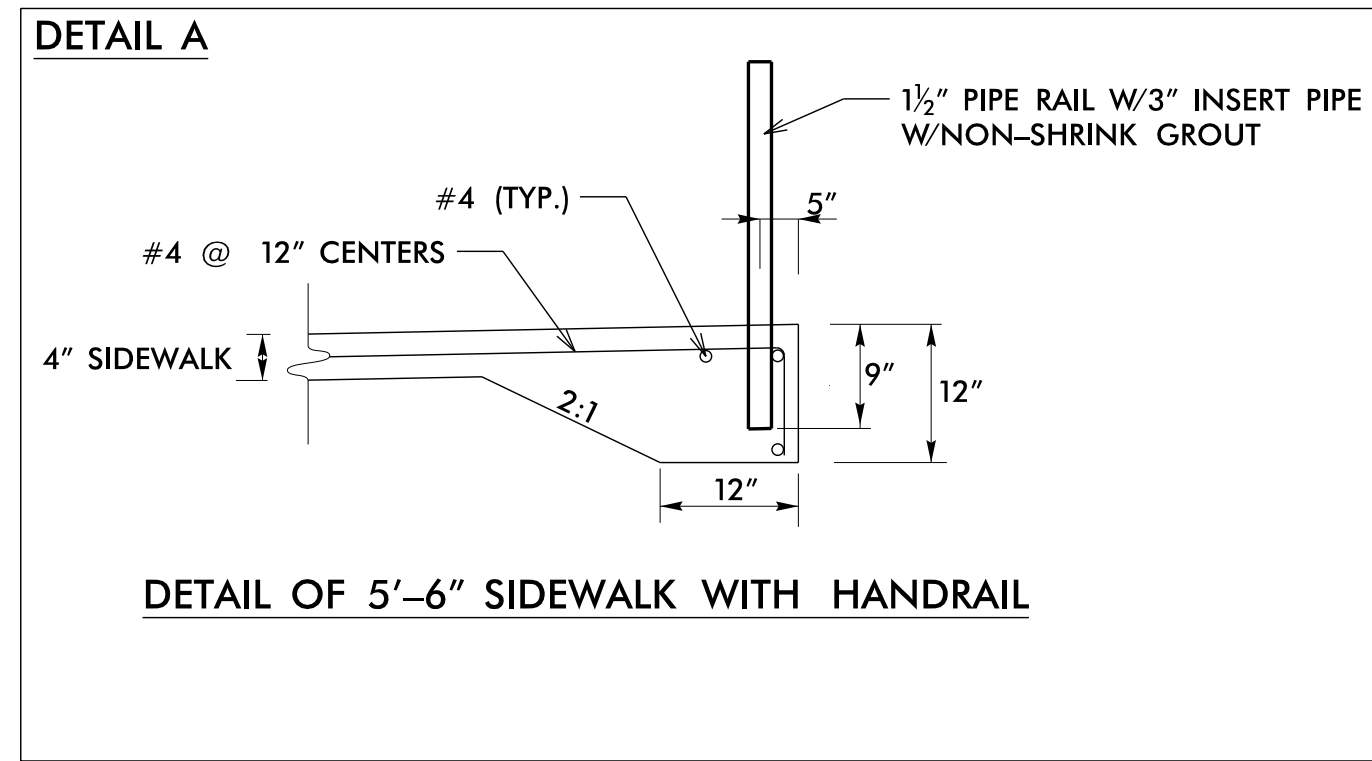
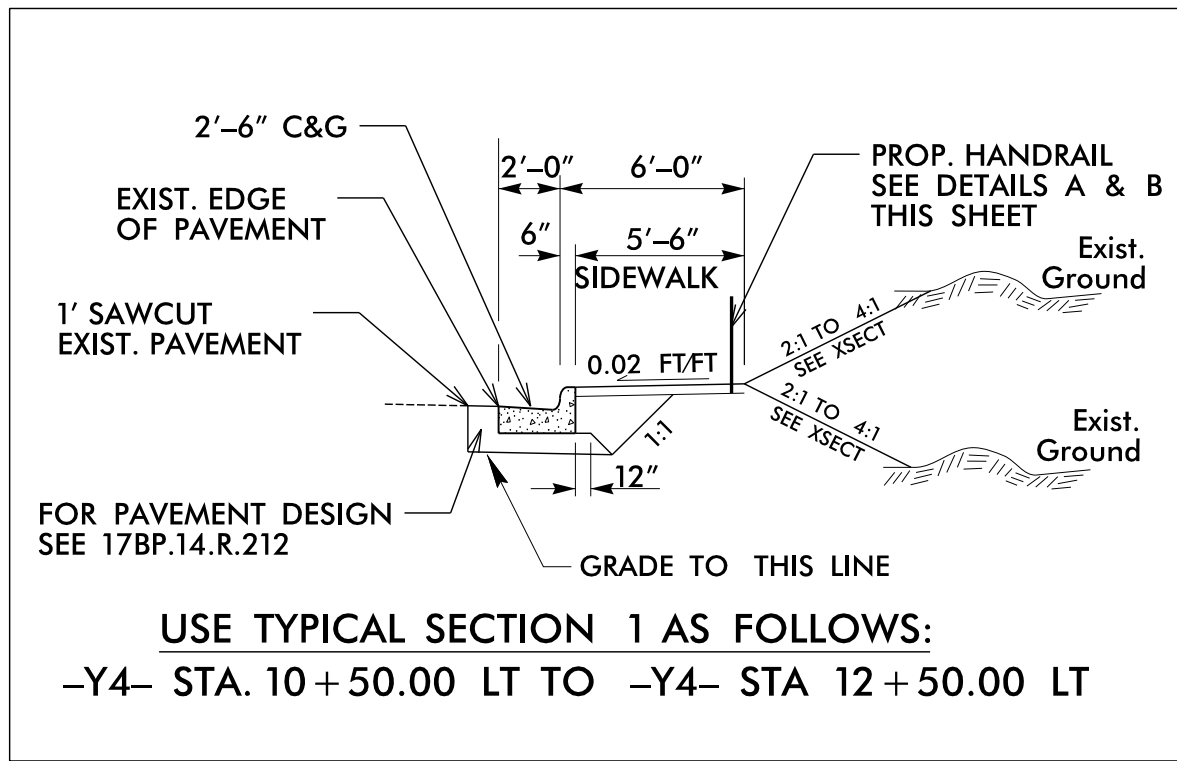
REVISIONS

3/24/2022
 X:\Roadway\B-4159_Rdwy_psh_Sidewalk.dgn
 X:\Roadway\B-4159_Rdwy_psh_Sidewalk\Project\B-4159_Rdwy_psh_Sidewalk.dgn
 User: turner



-Y4- CURVE DATA	-L- CURVE DATA
PI Sta 11+68.65	PI Sta 26+65.65
$\Delta = 61^{\circ} 10' 06.3''$ (LT)	$\Delta = 118^{\circ} 08' 55.9''$ (RT)
$D = 38^{\circ} 11' 49.9''$	$D = 6^{\circ} 53' 41.3''$
$L = 160.14'$	$L = 1,713.59'$
$T = 88.65'$	$T = 1,387.09'$
$R = 150.00'$	$R = 831.00'$

PROJECT REFERENCE NO. 44983	SHEET NO. SW-1
RW SHEET NO.	
ROADWAY DESIGN ENGINEER	HYDRAULICS ENGINEER
DOCUMENT NOT CONSIDERED FINAL UNLESS ALL SIGNATURES COMPLETED	
TGS ENGINEERS 804-C N. LAFAYETTE ST SHELBY, NC 28150 PH: (704) 476-0003 CORP. LICENSE NO.: C-0275	



NOTES

- CONSTRUCT THE PROPOSED STEEL PIPE RAIL OF 1/2" DIAMETER SCHEDULE 40 PLAIN END GALVANIZED STEEL PIPE MEETING THE REQUIREMENTS OF ASTM A53.
- REPAIR GALVANIZING IN ACCORDANCE WITH SECTION 1076 OF THE NCDOT STANDARD SPECIFICATIONS.
- WELD AS NEEDED IN ACCORDANCE WITH ARTICLE 1072-18 OF THE STANDARD SPECIFICATIONS.

