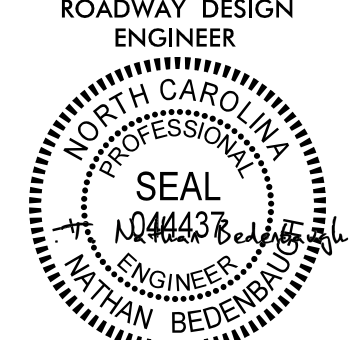

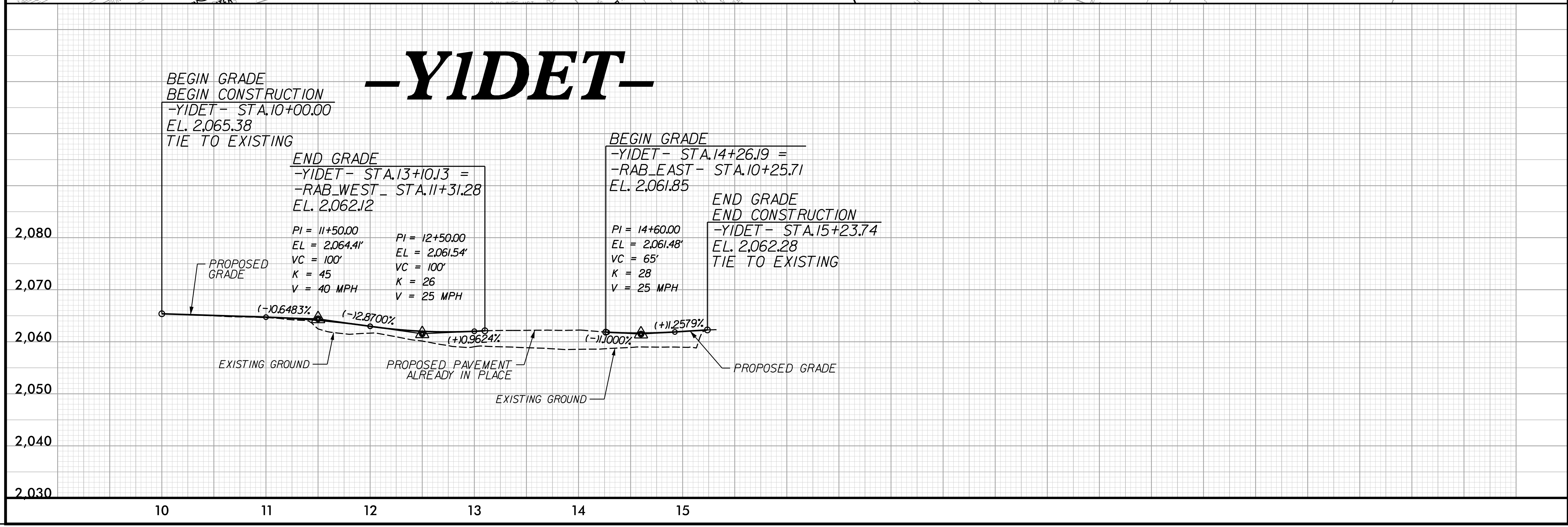
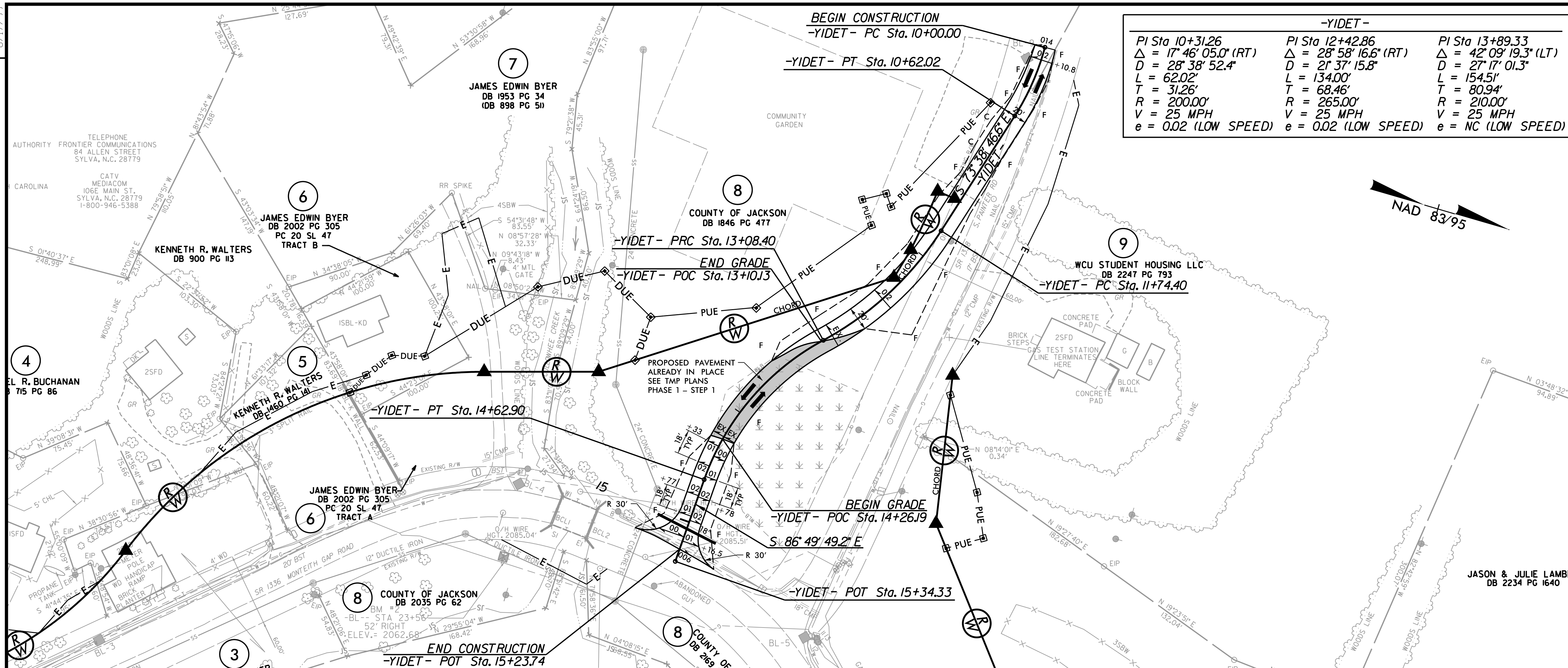
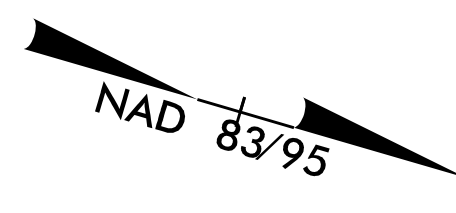


PROJECT REFERENCE NO. 17BP.14.R.212	SHEET NO. 2B-5
RW SHEET NO.	
ROADWAY DESIGN ENGINEER	HYDRAULICS ENGINEER
	
1/21/2022	
DOCUMENT NOT CONSIDERED FINAL UNLESS ALL SIGNATURES COMPLETED	
 HDR Engineering, Inc. of the Carolinas 555 Fayetteville St. Suite 900 Raleigh, N.C. 27601 N.C.B.E.L.S. License Number: F-0116	
SEE SHEET NO. 4 FOR ROADWAY PLAN	

-YIDET-		
PI Sta 10+31.26 Δ = 17° 46' 05.0" (RT) D = 28' 38" 52.4" L = 62.02' T = 31.26' R = 200.00' V = 25 MPH e = 0.02 (LOW SPEED)	PI Sta 12+42.86 Δ = 28° 58' 16.6" (RT) D = 21' 37" 15.8" L = 134.00' T = 68.46' R = 265.00' V = 25 MPH e = 0.02 (LOW SPEED)	PI Sta 13+89.33 Δ = 42° 09' 19.3" (LT) D = 27' 17" 01.3" L = 154.51' T = 80.94' R = 210.00' V = 25 MPH e = NC (LOW SPEED)



PLOT DRIVER: NCDOT_color_eng_50.plt
 USER: TBEDEBNA
 DATE: 10/1/2021
 TIME: 1:56:38 PM
 FILE: NCDOT\NCDOT_Western.Div.On-Cell.M.\NCDOT-17BP.14.R.212_Culwhee\6.0_CAD_BIM\6.2_Work_In_Progress\17BP.14.R.212_Roadway\Prj\490159.RDY_PSH02B-5.dgn

REVISIONS

PATRICK JOSEPH & BARBARA J. CO
DB 994 PG 522