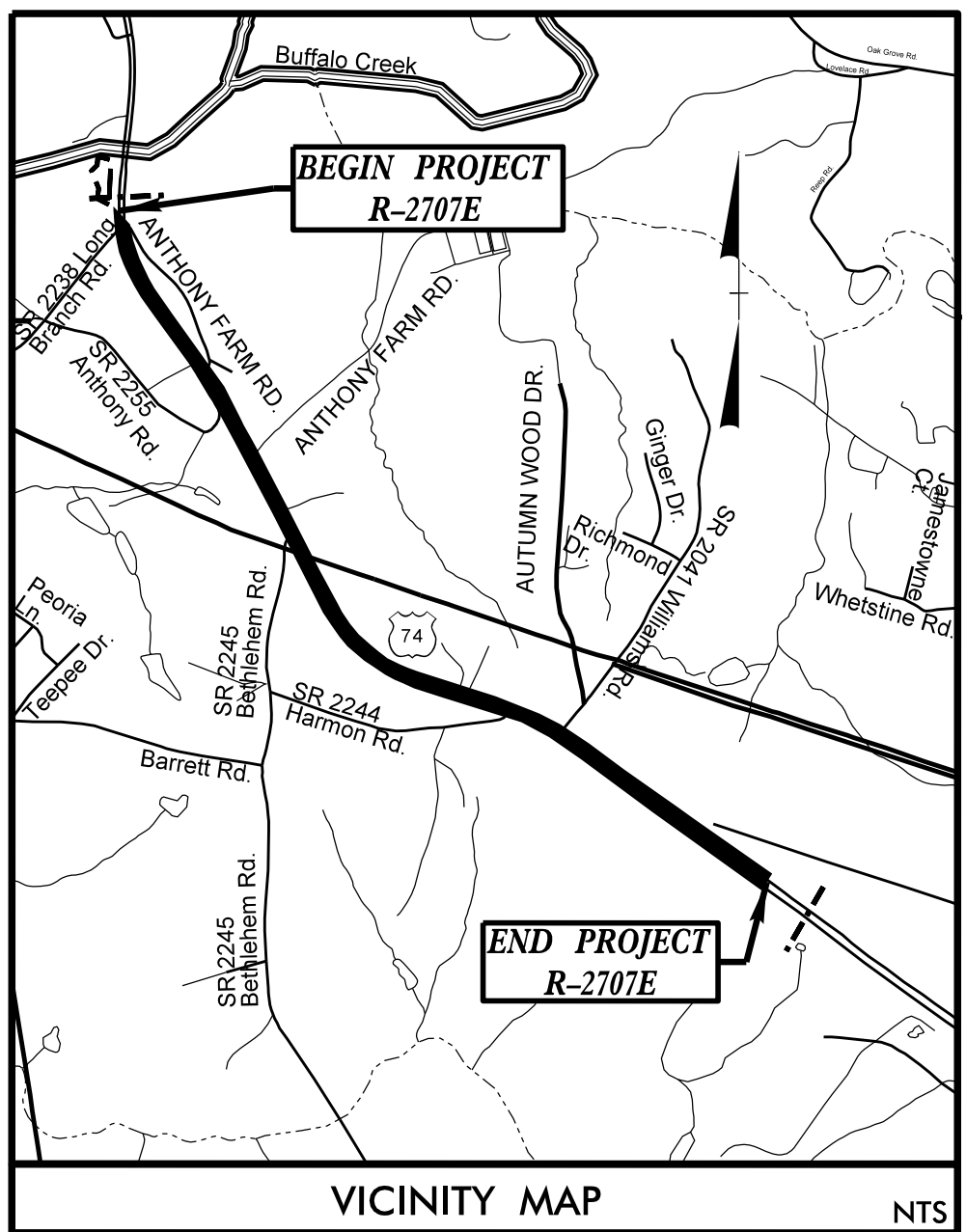


STATE OF NORTH CAROLINA
DIVISION OF HIGHWAYS

**UTILITIES BY OTHERS PLANS
CLEVELAND COUNTY**

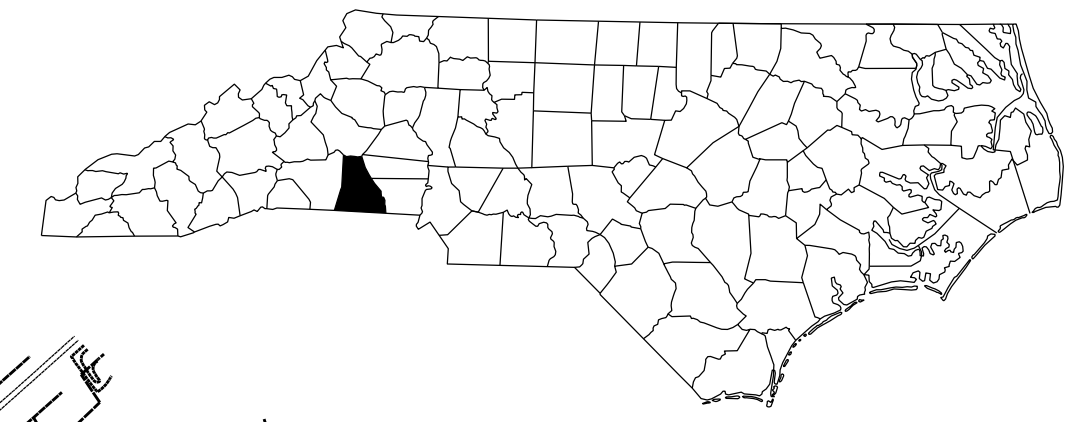
T.I.P. NO.	SHEET NO.
R-2707E	UO-1

NOTE:
ALL UTILITY WORK SHOWN ON THIS SHEET WILL BE DONE BY OTHERS. NO PAYMENT WILL BE MADE TO THE CONTRACTOR FOR UTILITY WORK SHOWN ON THIS SHEET.



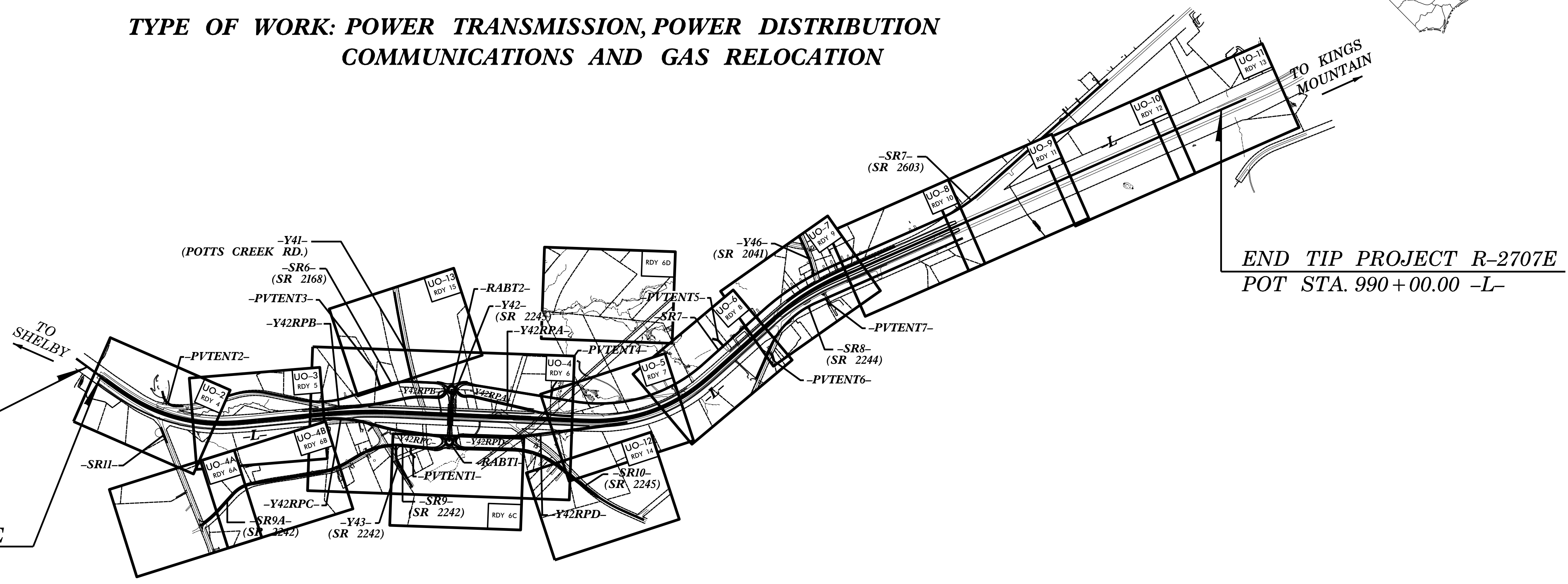
LOCATION: US 74 FROM EXISTING US 74 WEST OF SR 2238
(LONG BRANCH ROAD) TO WEST OF SR 1001

TYPE OF WORK: POWER TRANSMISSION, POWER DISTRIBUTION
COMMUNICATIONS AND GAS RELOCATION



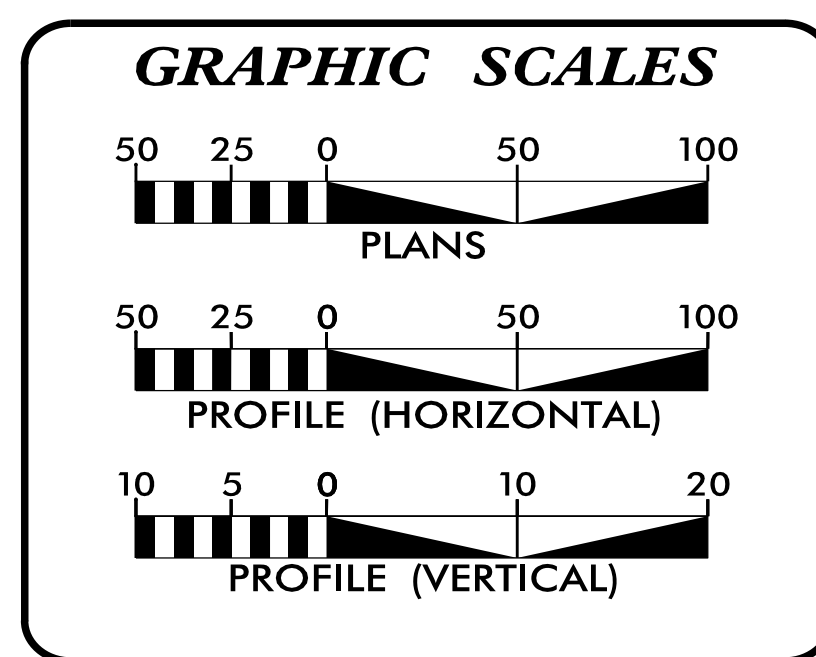
BEGIN CONSTRUCTION
POT STA. 849+12.00 -L-

END TIP PROJECT R-2707D
BEGIN TIP PROJECT R-2707E
POT STA. 851+00.00 -L-



END TIP PROJECT R-2707E
POT STA. 990+00.00 -L-

THIS PROJECT IS NOT WITHIN ANY CITY LIMITS
THIS IS A CONTROLLED ACCESS PROJECT
WITH ACCESS BEING LIMITED TO INTERCHANGES
CLEARING FOR THIS PROJECT SHALL BE PERFORMED
TO THE LIMITS ESTABLISHED BY METHOD III.



INDEX OF SHEETS

SHEET NO.:	DESCRIPTION:
UO-1	TITLE SHEET
UO-2, UO-3, UO-4, UO-4A, UO-4B	UBO PLAN SHEETS
UO-5 - UO-12	

UTILITY OWNERS WITH CONFLICTS

- (A) POWER TRANSMISSION - DUKE ENERGY
- (B) POWER DISTRIBUTION - DUKE ENERGY
- (C) COMMUNICATIONS TRANSMISSION - AT&T
- (D) COMMUNICATIONS - AT&T
- (E) COMMUNICATIONS - SPECTRUM
- (F) GAS - SHELBY GAS

PREPARED IN THE OFFICE OF:

Michael Baker INTERNATIONAL

Michael Baker Engineering, Inc.
8000 Regency Parkway, Suite 600
Cary, NC 27518
919-463-5488

Brandy Creech PROJECT UTILITY COORDINATOR
Christina Newsome PROJECT UTILITY TECHNICIAN

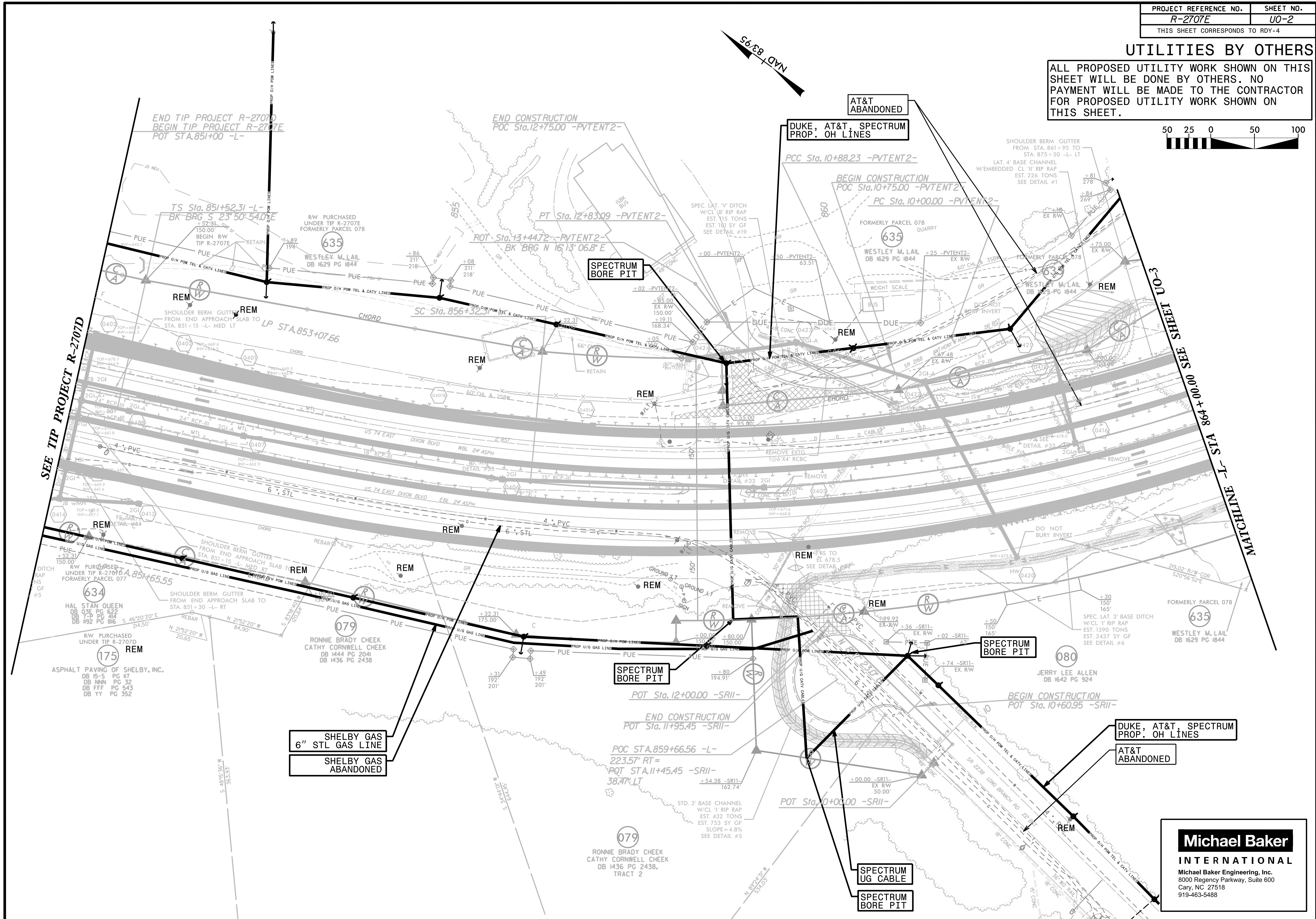
STATE OF NORTH CAROLINA
DEPARTMENT OF TRANSPORTATION

DIVISION OF HIGHWAYS
DIVISION 12
1710 E. MARION STREET
P O BOX 47
SHELBY NC 28152
PHONE (980) 552-4200

Larry Carpenter, P.E. DIVISION CONSTRUCTION ENGINEER
Chad Drewery DIVISION UTILITY ENGINEER
Joseph T. Keelington, P.E. PROJECT ENGINEER

UTILITIES BY OTHERS

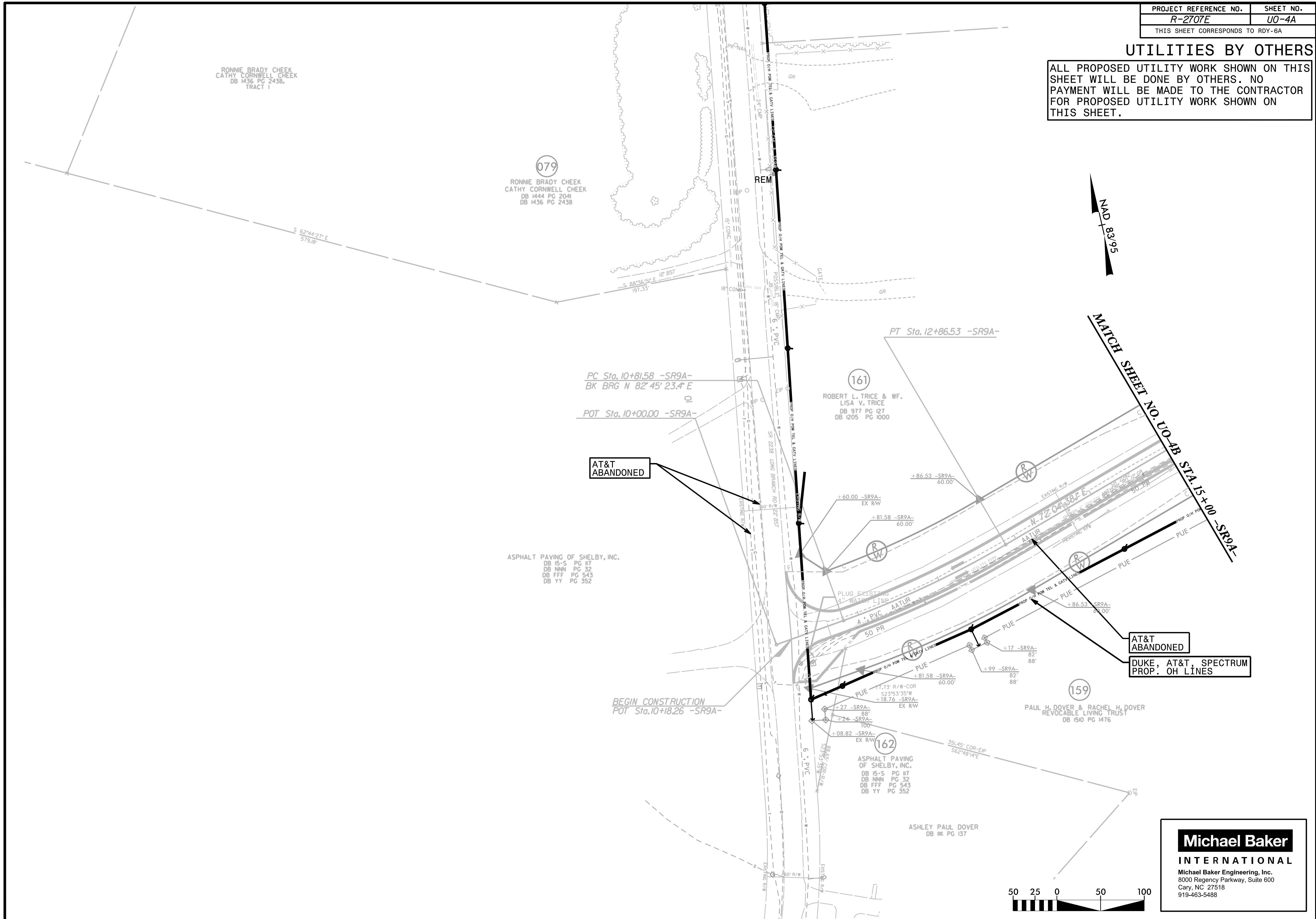
ALL PROPOSED UTILITY WORK SHOWN ON THIS SHEET WILL BE DONE BY OTHERS. NO PAYMENT WILL BE MADE TO THE CONTRACTOR FOR PROPOSED UTILITY WORK SHOWN ON THIS SHEET.



Michael Baker INTERNATIONAL
 Michael Baker Engineering, Inc.
 8000 Regency Parkway, Suite 600
 Cary, NC 27518
 919-463-5488

UTILITIES BY OTHERS

ALL PROPOSED UTILITY WORK SHOWN ON THIS SHEET WILL BE DONE BY OTHERS. NO PAYMENT WILL BE MADE TO THE CONTRACTOR FOR PROPOSED UTILITY WORK SHOWN ON THIS SHEET.



RONNIE BRADY CHEEK
CATHY CORNWELL CHEEK
DB 1436 PG 2438,
TRACT 1

079
RONNIE BRADY CHEEK
CATHY CORNWELL CHEEK
DB 1444 PG 2041
DB 1436 PG 2438

161
ROBERT L. TRICE & WF.
LISA V. TRICE
DB 977 PG 127
DB 1205 PG 1000

ASPHALT PAVING OF SHELBY, INC.
DB IS-S PG 117
DB NNN PG 32
DB FFF PG 543
DB YY PG 352

162
ASPHALT PAVING OF SHELBY, INC.
DB IS-S PG 117
DB NNN PG 32
DB FFF PG 543
DB YY PG 352

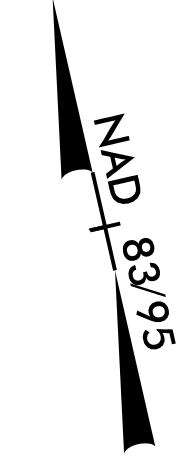
159
PAUL H. DOVER & RACHEL H. DOVER
REVOCABLE LIVING TRUST
DB 1510 PG 1476

ASHLEY PAUL DOVER
DB 11K PG 137

AT&T
ABANDONED

AT&T
ABANDONED

DUKE, AT&T, SPECTRUM
PROP. OH LINES



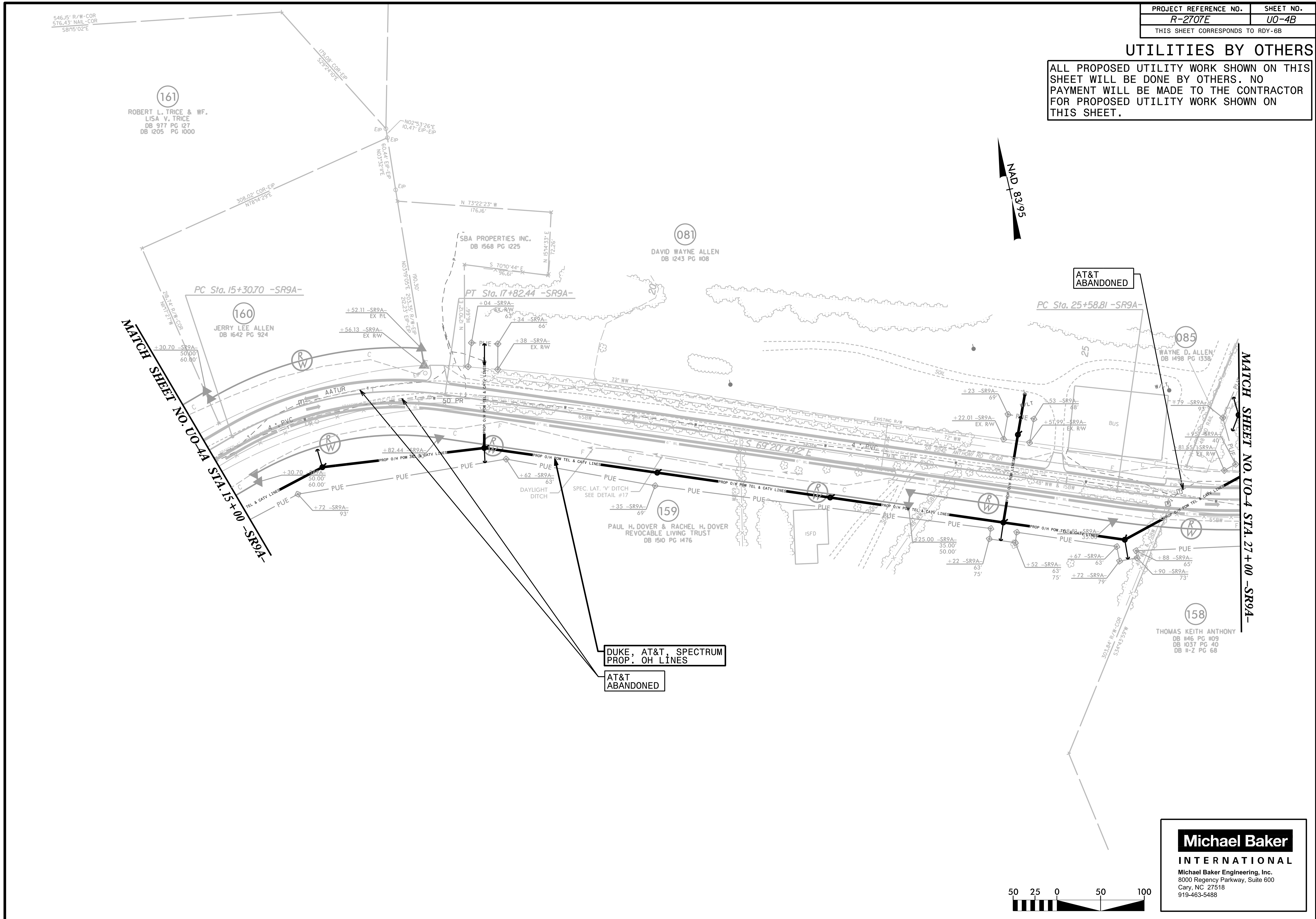
MATCH SHEET NO. UO-4B STA. 15+00 -SR9A-



Michael Baker
INTERNATIONAL
Michael Baker Engineering, Inc.
8000 Regency Parkway, Suite 600
Cary, NC 27518
919-463-5488

UTILITIES BY OTHERS

ALL PROPOSED UTILITY WORK SHOWN ON THIS SHEET WILL BE DONE BY OTHERS. NO PAYMENT WILL BE MADE TO THE CONTRACTOR FOR PROPOSED UTILITY WORK SHOWN ON THIS SHEET.



546.15' R/W-COR
576.43' NAIL-COR
S81°5'02"E

161
ROBERT L. TRICE & WF.
LISA V. TRICE
DB 977 PG 127
DB 1205 PG 1000

160
JERRY LEE ALLEN
DB 1642 PG 924

081
DAVID WAYNE ALLEN
DB 1243 PG 1108

159
PAUL H. DOVER & RACHEL H. DOVER
REVOCABLE LIVING TRUST
DB 1510 PG 1476

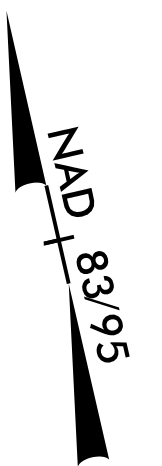
085
WAYNE D. ALLEN
DB 1498 PG 1338

158
THOMAS KEITH ANTHONY
DB 146 PG 109
DB 1037 PG 40
DB 11-2 PG 68

MATCH SHEET NO. U0-4A STA. 15+00 -SR9A-

MATCH SHEET NO. U0-4 STA. 27+00 -SR9A-

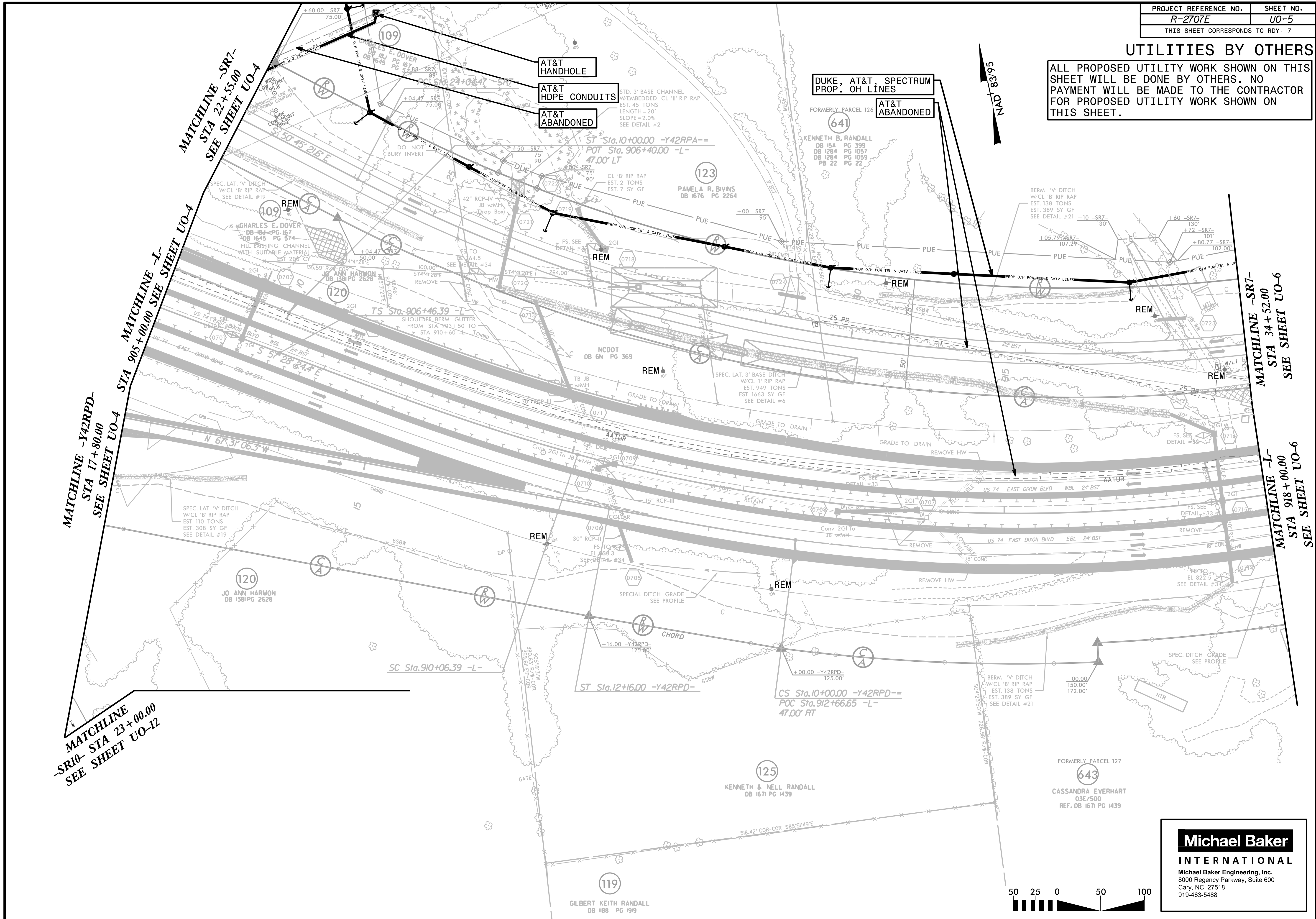
DUKE, AT&T, SPECTRUM
PROP. OH LINES
AT&T
ABANDONED



Michael Baker
INTERNATIONAL
Michael Baker Engineering, Inc.
8000 Regency Parkway, Suite 600
Cary, NC 27518
919-463-5488

UTILITIES BY OTHERS

ALL PROPOSED UTILITY WORK SHOWN ON THIS SHEET WILL BE DONE BY OTHERS. NO PAYMENT WILL BE MADE TO THE CONTRACTOR FOR PROPOSED UTILITY WORK SHOWN ON THIS SHEET.



MATCHLINE -SR10- STA 23+00.00
SEE SHEET UO-12

MATCHLINE -Y42RPD- STA 17+80.00
SEE SHEET UO-4

MATCHLINE -J- STA 905+00.00
SEE SHEET UO-4

MATCHLINE -SR7- STA 22+55.00
SEE SHEET UO-4

MATCHLINE -SR7- STA 34+52.00
SEE SHEET UO-6

MATCHLINE -L- STA 918+00.00
SEE SHEET UO-6

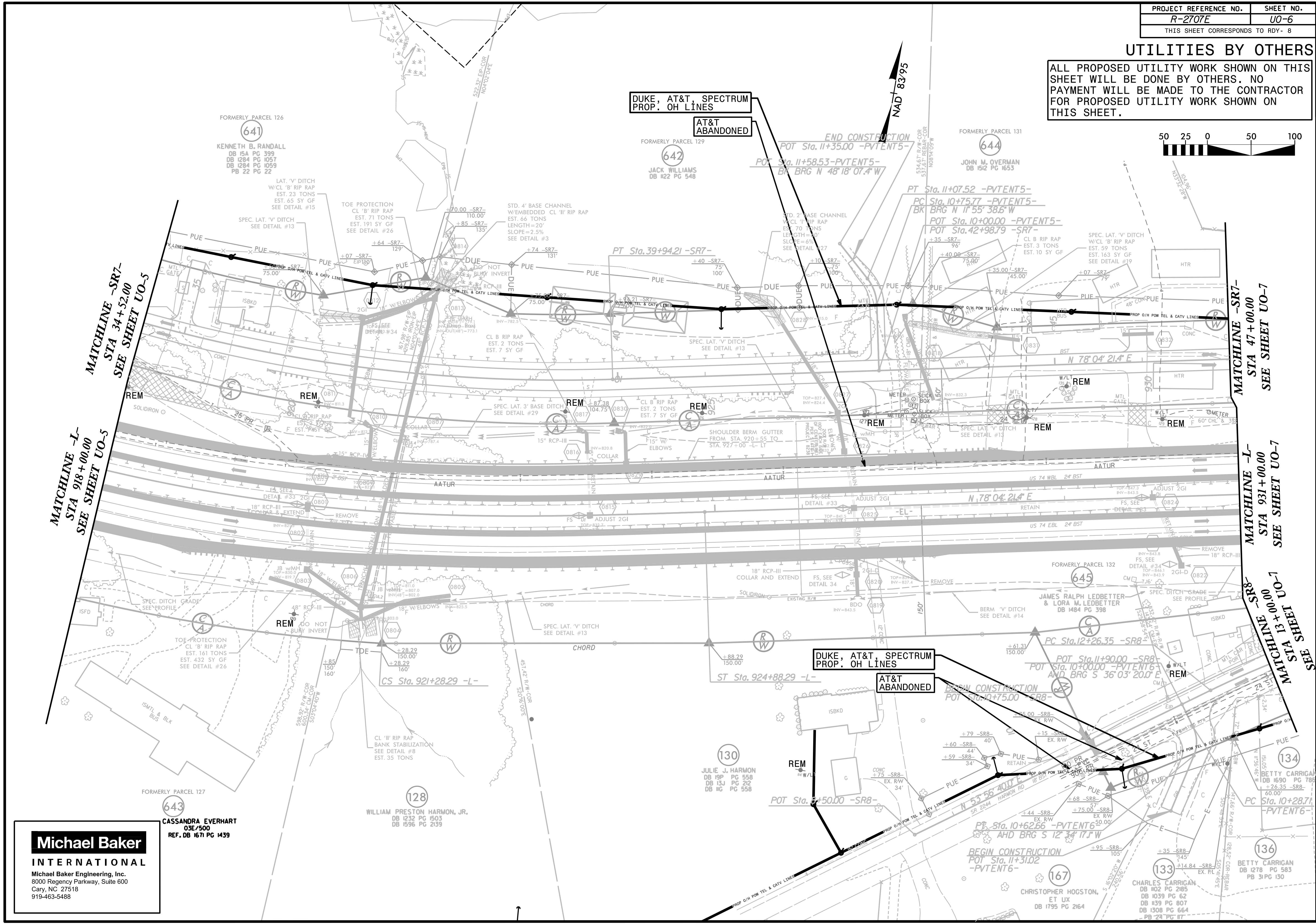
NAD 83/95



Michael Baker INTERNATIONAL
 Michael Baker Engineering, Inc.
 8000 Regency Parkway, Suite 600
 Cary, NC 27518
 919-463-5488

UTILITIES BY OTHERS

ALL PROPOSED UTILITY WORK SHOWN ON THIS SHEET WILL BE DONE BY OTHERS. NO PAYMENT WILL BE MADE TO THE CONTRACTOR FOR PROPOSED UTILITY WORK SHOWN ON THIS SHEET.



643 CASSANDRA EVERHART
 OSE/500
 REF. DB 1671 PG 1439

128 WILLIAM PRESTON HARMON, JR.
 DB 1232 PG 1503
 DB 1596 PG 2139

130 JULIE J. HARMON
 DB 1314 PG 22
 DB 1618 PG 558

DUKE, AT&T, SPECTRUM
 PROP. OH LINES
 AT&T
 ABANDONED

DUKE, AT&T, SPECTRUM
 PROP. OH LINES
 AT&T
 ABANDONED

133 CHARLES CARRIGAN
 DB 102 PG 285
 DB 1039 PG 62
 DB 1308 PG 664
 DB 1308 PG 664
 DB 1308 PG 664

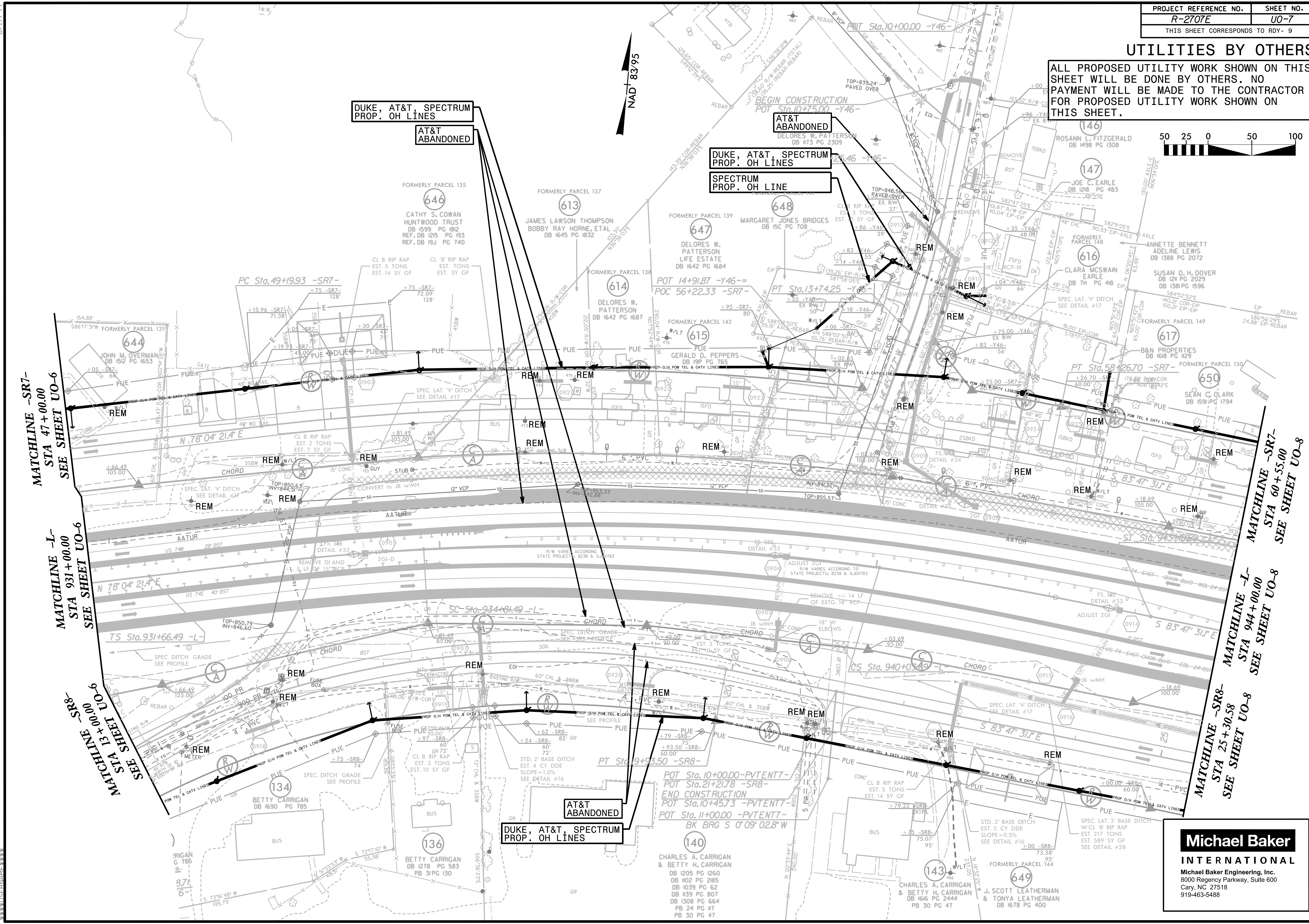
136 BETTY CARRIGAN
 DB 1278 PG 583
 PB 31 PG 130

UTILITIES BY OTHERS

ALL PROPOSED UTILITY WORK SHOWN ON THIS SHEET WILL BE DONE BY OTHERS. NO PAYMENT WILL BE MADE TO THE CONTRACTOR FOR PROPOSED UTILITY WORK SHOWN ON THIS SHEET.



NAD 83/95



DUKE, AT&T, SPECTRUM
PROP. OH LINES

AT&T
ABANDONED

DUKE, AT&T, SPECTRUM
PROP. OH LINES

AT&T
ABANDONED

AT&T
ABANDONED

DUKE, AT&T, SPECTRUM
PROP. OH LINES

MATCHLINE -SR7-
STA 47+00.00
SEE SHEET U0-6

MATCHLINE -L-
STA 931+00.00
SEE SHEET U0-6

MATCHLINE -SR8-
STA 13+00.00
SEE SHEET U0-6

MATCHLINE -SR7-
STA 60+55.00
SEE SHEET U0-8

MATCHLINE -L-
STA 944+00.00
SEE SHEET U0-8

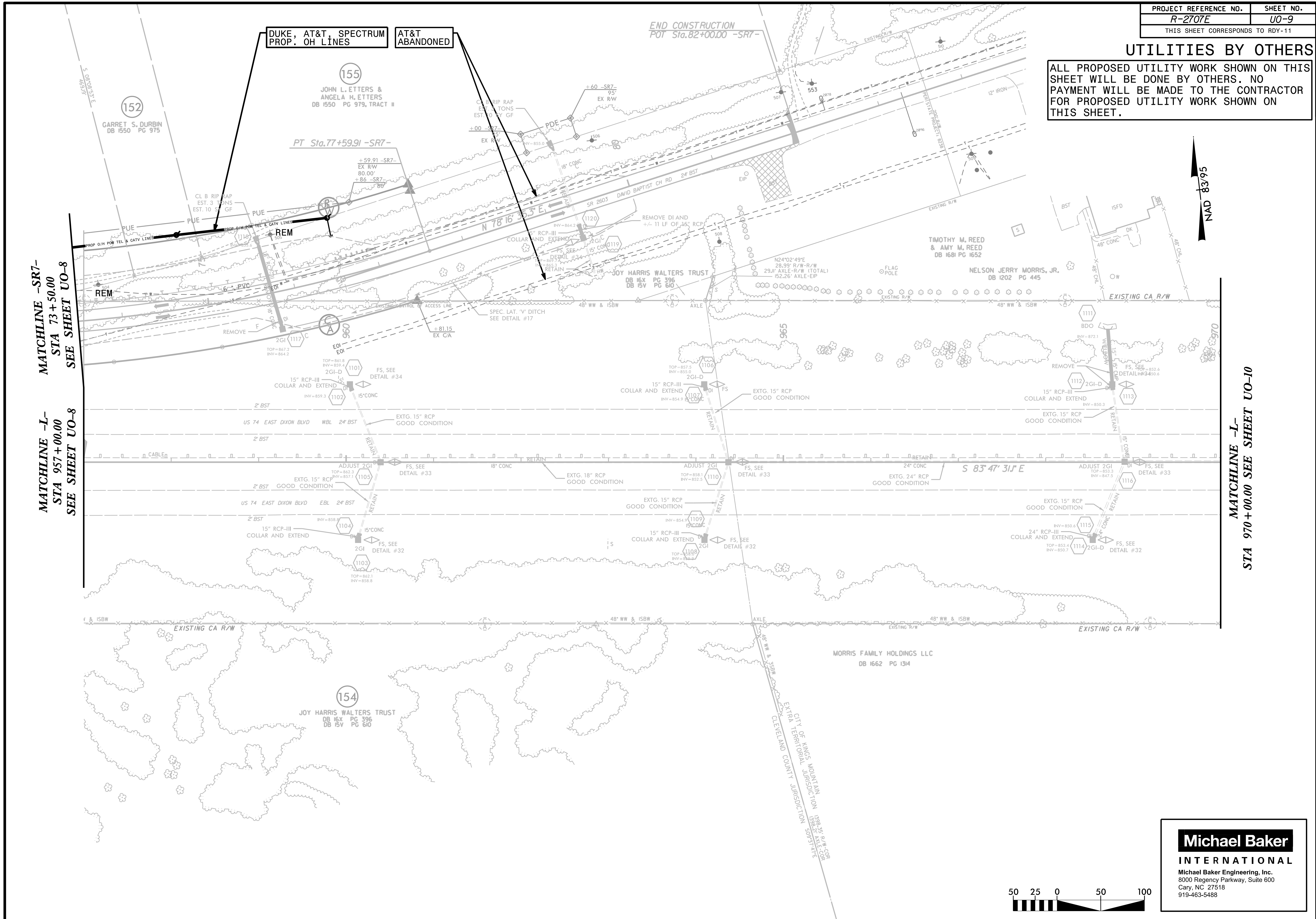
MATCHLINE -SR8-
STA 25+30.58
SEE SHEET U0-8

Michael Baker
INTERNATIONAL

Michael Baker Engineering, Inc.
8000 Regency Parkway, Suite 600
Cary, NC 27518
919-463-5488

UTILITIES BY OTHERS

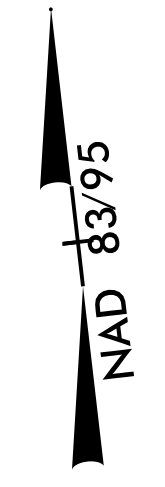
ALL PROPOSED UTILITY WORK SHOWN ON THIS SHEET WILL BE DONE BY OTHERS. NO PAYMENT WILL BE MADE TO THE CONTRACTOR FOR PROPOSED UTILITY WORK SHOWN ON THIS SHEET.



MATCHLINE -SR7-
STA 73+50.00
SEE SHEET UO-8

MATCHLINE -L-
STA 957+00.00
SEE SHEET UO-8

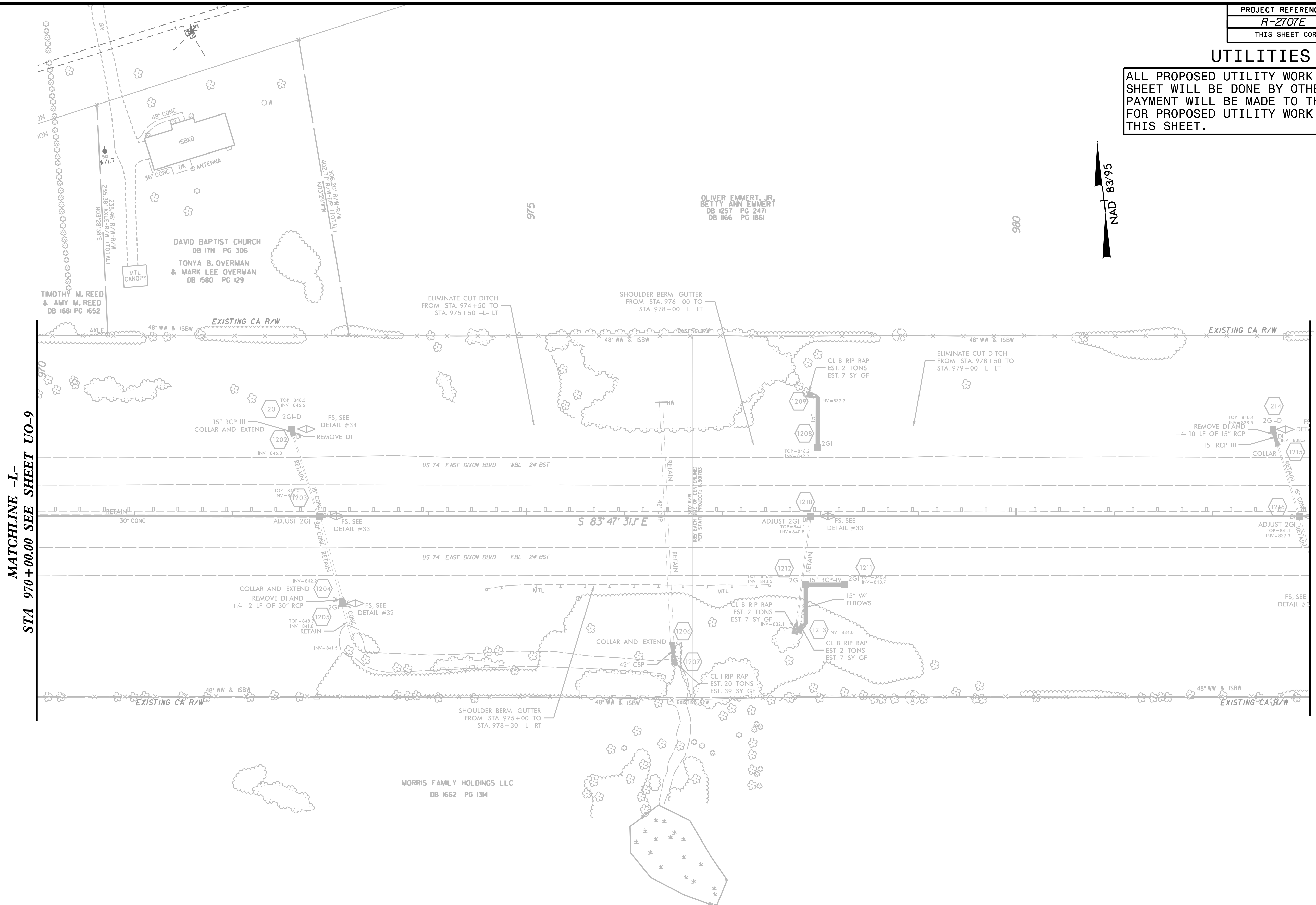
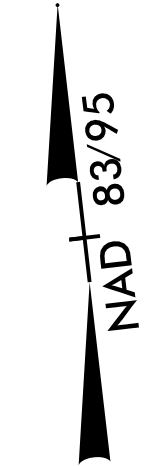
MATCHLINE -L-
STA 970+00.00
SEE SHEET UO-10



Michael Baker
INTERNATIONAL
Michael Baker Engineering, Inc.
8000 Regency Parkway, Suite 600
Cary, NC 27518
919-463-5488

UTILITIES BY OTHERS

ALL PROPOSED UTILITY WORK SHOWN ON THIS SHEET WILL BE DONE BY OTHERS. NO PAYMENT WILL BE MADE TO THE CONTRACTOR FOR PROPOSED UTILITY WORK SHOWN ON THIS SHEET.



MATCHLINE -L-
STA 970 + 00.00 SEE SHEET UO-9

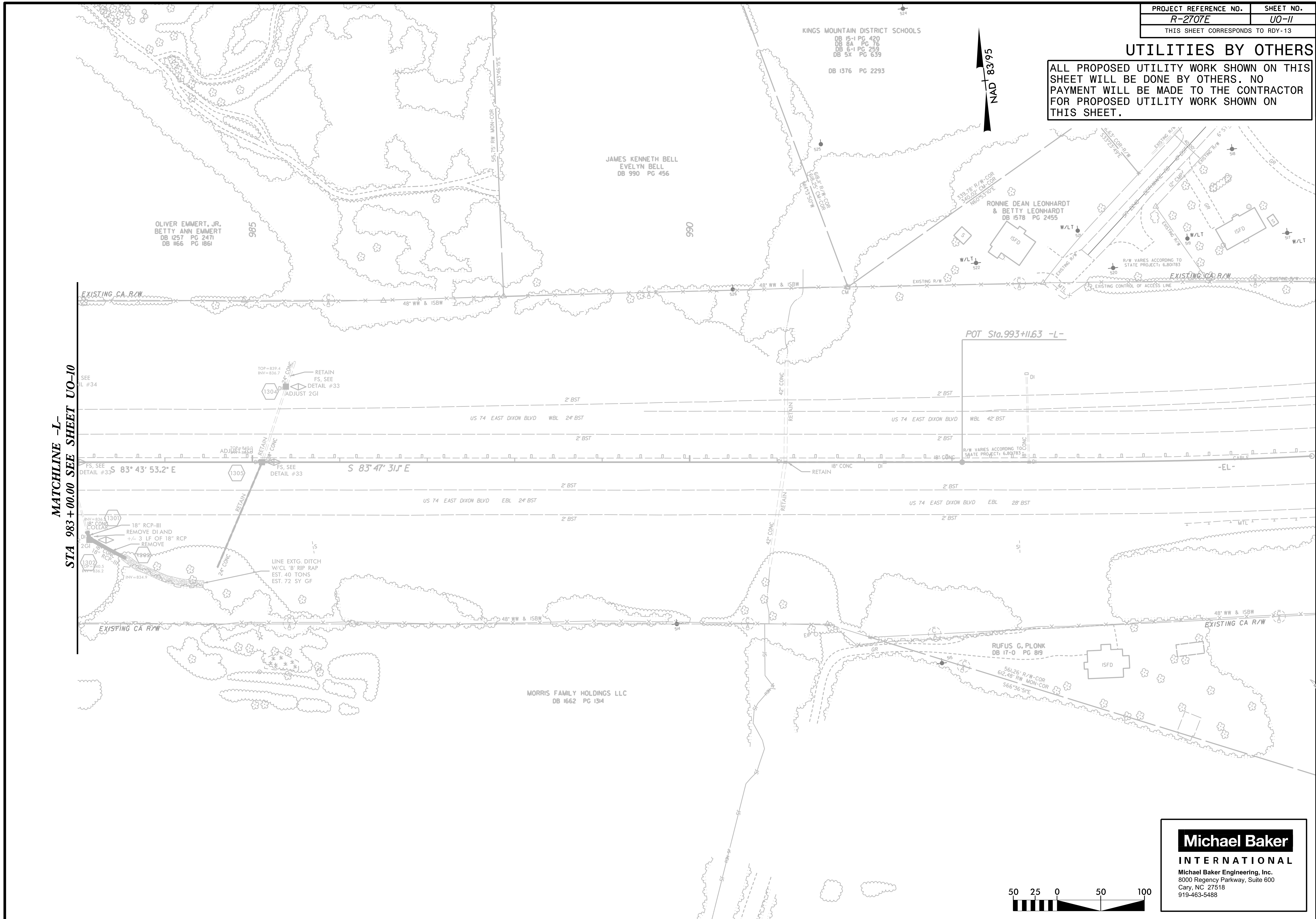
MATCHLINE -L-
STA 983 + 00.00 SEE SHEET UO-11

Michael Baker
INTERNATIONAL
Michael Baker Engineering, Inc.
8000 Regency Parkway, Suite 600
Cary, NC 27518
919-463-5488



UTILITIES BY OTHERS

ALL PROPOSED UTILITY WORK SHOWN ON THIS SHEET WILL BE DONE BY OTHERS. NO PAYMENT WILL BE MADE TO THE CONTRACTOR FOR PROPOSED UTILITY WORK SHOWN ON THIS SHEET.



MATCHLINE -L-
STA 983+00.00 SEE SHEET UO-10

POT Sta.993+11.63 -L-

NAD 83/95

Michael Baker
INTERNATIONAL
Michael Baker Engineering, Inc.
8000 Regency Parkway, Suite 600
Cary, NC 27518
919-463-5488



KINGS MOUNTAIN DISTRICT SCHOOLS
DB 15-1 PG 420
DB 8A PG 76
DB 6-1 PG 259
DB 5X PG 639
DB 1376 PG 2293

JAMES KENNETH BELL
EVELYN BELL
DB 990 PG 456

OLIVER EMMERT, JR.
BETTY ANN EMMERT
DB 1257 PG 2471
DB 1166 PG 1861

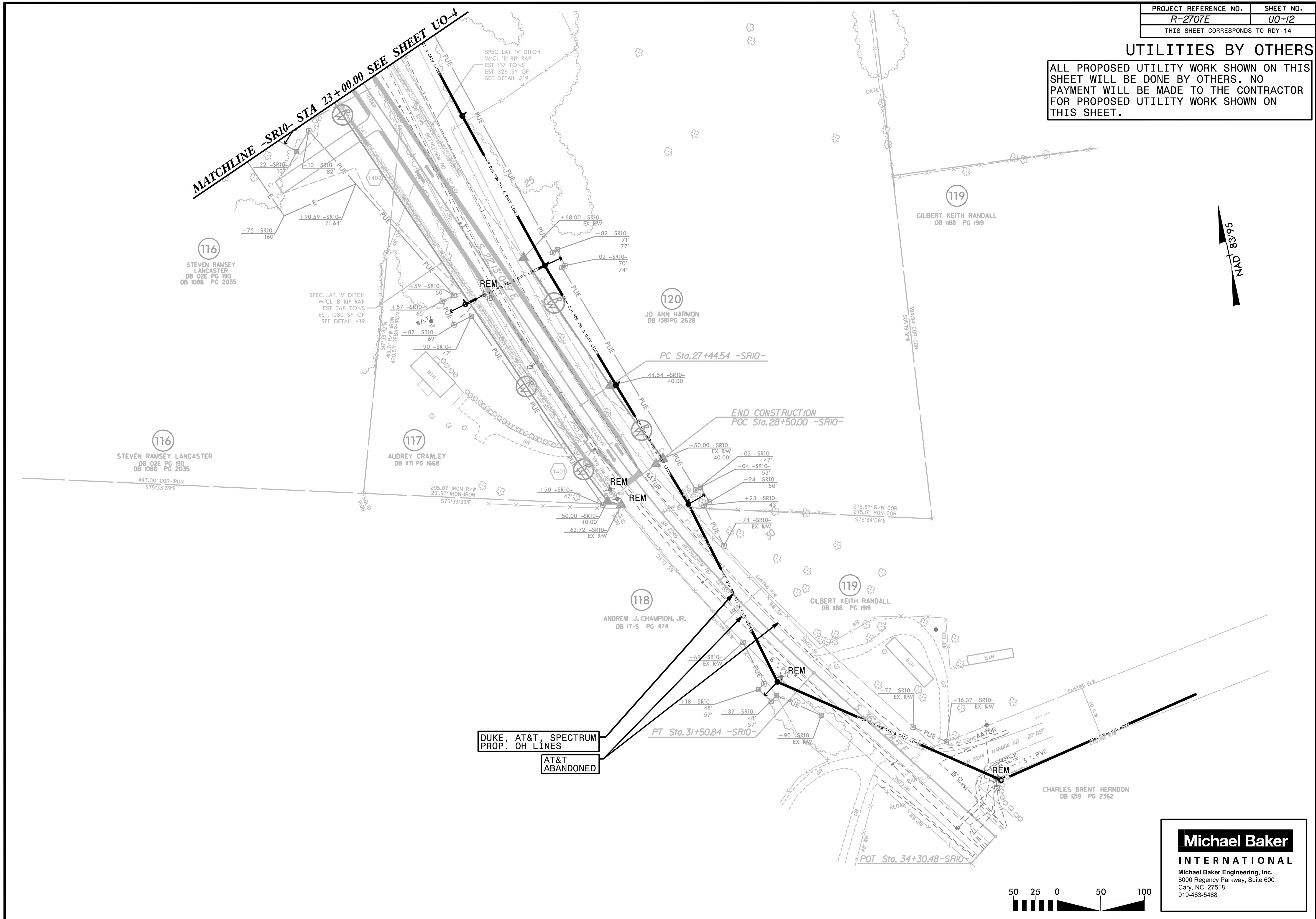
RONNIE DEAN LEONHARDT
& BETTY LEONHARDT
DB 1578 PG 2455

RUFUS G. PLONK
DB 17-0 PG 819

MORRIS FAMILY HOLDINGS LLC
DB 1662 PG 134

UTILITIES BY OTHERS

ALL PROPOSED UTILITY WORK SHOWN ON THIS SHEET WILL BE DONE BY OTHERS. NO PAYMENT WILL BE MADE TO THE CONTRACTOR FOR PROPOSED UTILITY WORK SHOWN ON THIS SHEET.



DUKE, AT&T, SPECTRUM
PROP. OH LINES

AT&T
ABANDONED

Michael Baker
INTERNATIONAL

Michael Baker Engineering, Inc.
8000 Regency Parkway, Suite 600
Cary, NC 27518
919-463-5488

