

For Slopes Excavated Greater Than 10 feet
Install Matting for Erosion Control on
Entire Slope as Work Allows.

Stantec
Stantec Consulting Services Inc.
801 Jones Franklin Road
Suite 300
Raleigh, NC 27606
Tel. (919) 851-6866
Fax. (919) 851-7024
www.stantec.com
License No. F-0672

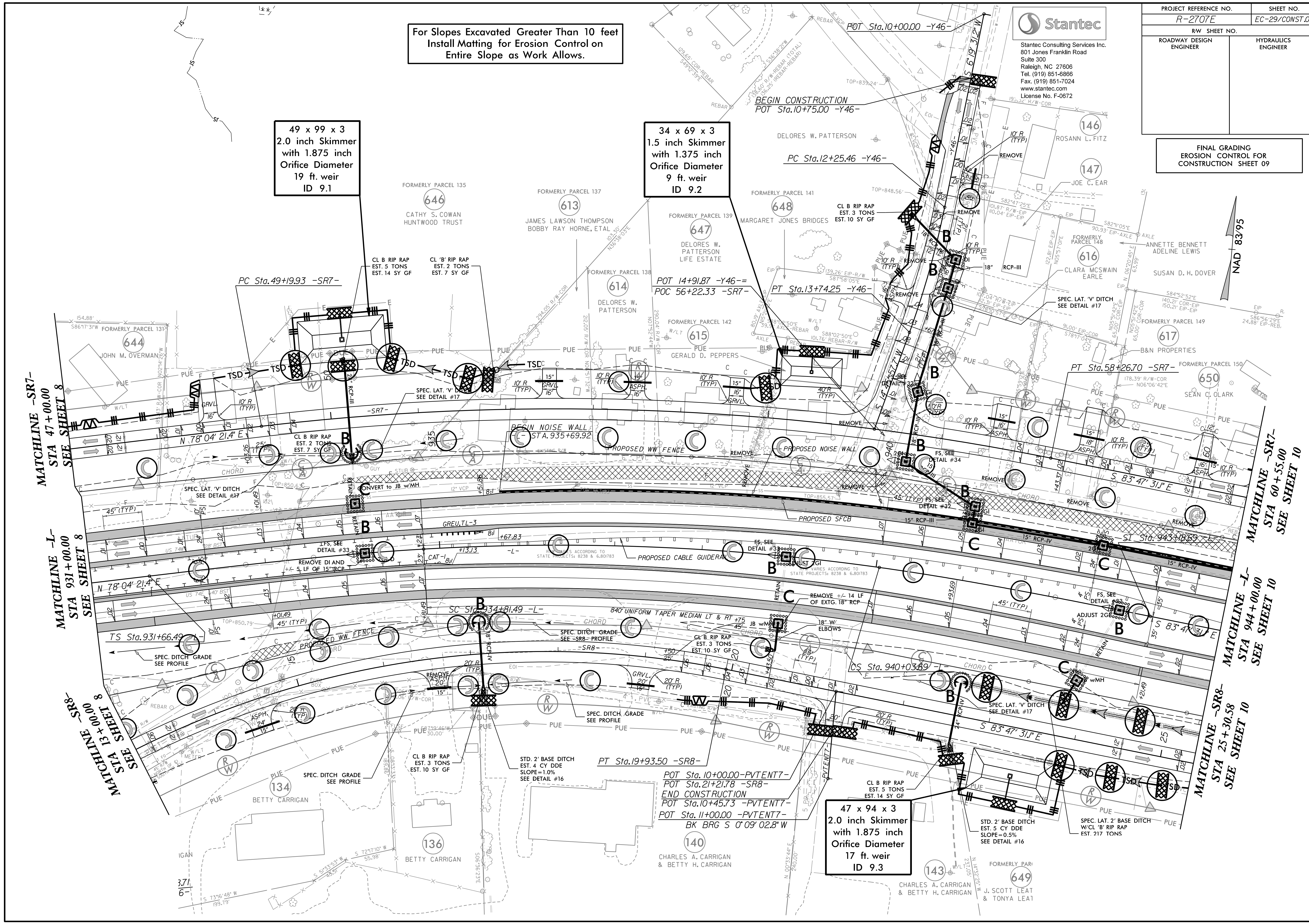
PROJECT REFERENCE NO. R-2707E	SHEET NO. EC-29/CONST.09
RW SHEET NO.	
ROADWAY DESIGN ENGINEER	HYDRAULICS ENGINEER

FINAL GRADING
EROSION CONTROL FOR
CONSTRUCTION SHEET 09

49 x 99 x 3
2.0 inch Skimmer
with 1.875 inch
Orifice Diameter
19 ft. weir
ID 9.1

34 x 69 x 3
1.5 inch Skimmer
with 1.375 inch
Orifice Diameter
9 ft. weir
ID 9.2

47 x 94 x 3
2.0 inch Skimmer
with 1.875 inch
Orifice Diameter
17 ft. weir
ID 9.3



MATCHLINE -SR7-
STA 47+00.00
SEE SHEET 8

MATCHLINE -L-
STA 931+00.00
SEE SHEET 8

MATCHLINE -SR8-
STA 13+00.00
SEE SHEET 8

MATCHLINE -SR7-
STA 60+55.00
SEE SHEET 10

MATCHLINE -L-
STA 944+00.00
SEE SHEET 10

MATCHLINE -SR8-
STA 25+30.58
SEE SHEET 10

POT Sta. 10+00.00 -PVENT7-
POT Sta. 21+21.78 -SR8-
END CONSTRUCTION
POT Sta. 10+45.73 -PVENT7-
POT Sta. 11+00.00 -PVENT7-
BK BRG S 0°09'02.8"W

STD. 2' BASE DITCH
EST. 4 CY DDE
SLOPE=1.0%
SEE DETAIL #16

STD. 2' BASE DITCH
EST. 5 CY DDE
SLOPE=0.5%
SEE DETAIL #16

SPEC. LAT. 'V' DITCH
W/CL 'B' RIP RAP
EST. 217 TONS

PROJECT REFERENCE NO. <i>R-2707E</i>	SHEET NO. <i>EC-30/CONST.10</i>
RW SHEET NO.	
ROADWAY DESIGN ENGINEER	HYDRAULICS ENGINEER

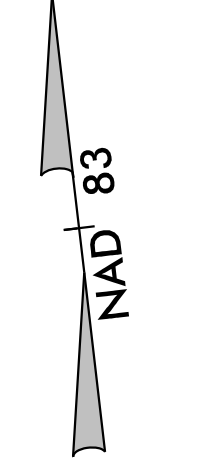
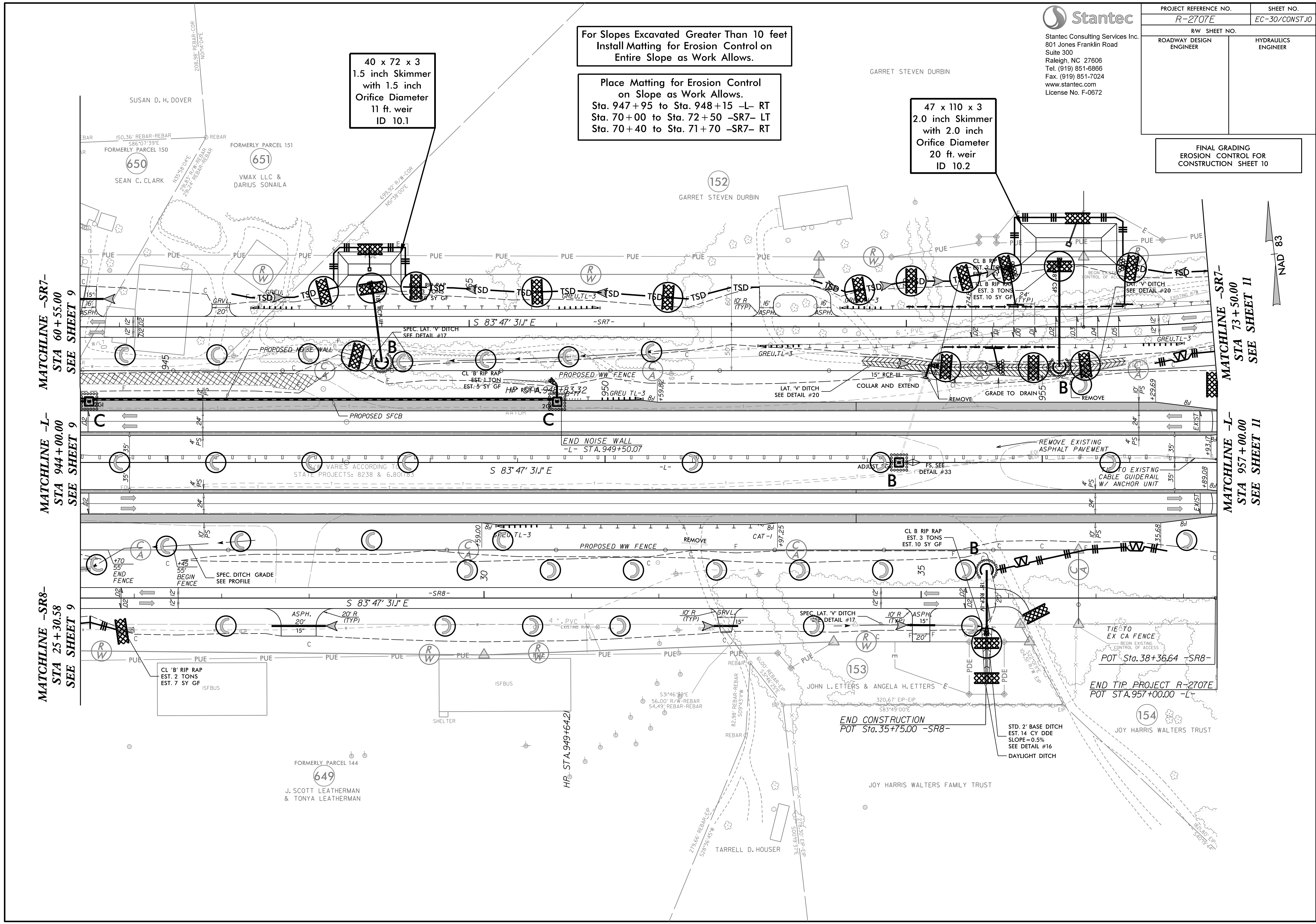
For Slopes Excavated Greater Than 10 feet
Install Matting for Erosion Control on
Entire Slope as Work Allows.

Place Matting for Erosion Control
on Slope as Work Allows.
Sta. 947+95 to Sta. 948+15 -L- RT
Sta. 70+00 to Sta. 72+50 -SR7- LT
Sta. 70+40 to Sta. 71+70 -SR7- RT

47 x 110 x 3
2.0 inch Skimmer
with 2.0 inch
Orifice Diameter
20 ft. weir
ID 10.2

40 x 72 x 3
1.5 inch Skimmer
with 1.5 inch
Orifice Diameter
11 ft. weir
ID 10.1

FINAL GRADING
EROSION CONTROL FOR
CONSTRUCTION SHEET 10



MATCHLINE -SR7-
STA 60+55.00
SEE SHEET 9

MATCHLINE -L-
STA 944+00.00
SEE SHEET 9

MATCHLINE -SR8-
STA 25+30.58
SEE SHEET 9

MATCHLINE -SR7-
STA 73+50.00
SEE SHEET 11

MATCHLINE -L-
STA 957+00.00
SEE SHEET 11

END TIP PROJECT R-2707E
POT STA. 957+00.00 -L-

END CONSTRUCTION
POT STA. 35+75.00 -SR8-

FORMERLY PARCEL 144
649
J. SCOTT LEATHERMAN
& TONYA LEATHERMAN

HP STA. 949+64.2

JOY HARRIS WALTERS FAMILY TRUST

JOY HARRIS WALTERS TRUST

JOHN L. ETTERS & ANGELA H. ETTERS

TARRELL D. HOUSER

152
GARRET STEVEN DURBIN

153

154

SUSAN D. H. DOVER

FORMERLY PARCEL 150
650
SEAN C. CLARK

FORMERLY PARCEL 151
651
VMAX LLC & DARIUS SONAILA

REBAR 150.36' REBAR-REBAR
586.07' 39"E
FORMERLY PARCEL 150

REBAR 135.50' 04"E
20.93' 7"W REBAR
25.54' 24" REBAR-REBAR

599.52' 02"W COR
N93.56' 00"E

S 83° 47' 31" E -SR7-

S 83° 47' 31" E -L-

S 83° 47' 31" E -SR8-

HP STA. 949+64.2

END CONSTRUCTION
POT STA. 35+75.00 -SR8-

END TIP PROJECT R-2707E
POT STA. 957+00.00 -L-

FORMERLY PARCEL 144
649
J. SCOTT LEATHERMAN
& TONYA LEATHERMAN

HP STA. 949+64.2

JOY HARRIS WALTERS FAMILY TRUST

JOY HARRIS WALTERS TRUST

JOHN L. ETTERS & ANGELA H. ETTERS

TARRELL D. HOUSER

152
GARRET STEVEN DURBIN

153

154

SUSAN D. H. DOVER

FORMERLY PARCEL 150
650
SEAN C. CLARK

FORMERLY PARCEL 151
651
VMAX LLC & DARIUS SONAILA

REBAR 150.36' REBAR-REBAR
586.07' 39"E
FORMERLY PARCEL 150

REBAR 135.50' 04"E
20.93' 7"W REBAR
25.54' 24" REBAR-REBAR

599.52' 02"W COR
N93.56' 00"E

S 83° 47' 31" E -SR7-

S 83° 47' 31" E -L-

S 83° 47' 31" E -SR8-

HP STA. 949+64.2

END CONSTRUCTION
POT STA. 35+75.00 -SR8-

END TIP PROJECT R-2707E
POT STA. 957+00.00 -L-

FORMERLY PARCEL 144
649
J. SCOTT LEATHERMAN
& TONYA LEATHERMAN

HP STA. 949+64.2

JOY HARRIS WALTERS FAMILY TRUST

JOY HARRIS WALTERS TRUST

JOHN L. ETTERS & ANGELA H. ETTERS

TARRELL D. HOUSER

152
GARRET STEVEN DURBIN

153

154

SUSAN D. H. DOVER

FORMERLY PARCEL 150
650
SEAN C. CLARK

FORMERLY PARCEL 151
651
VMAX LLC & DARIUS SONAILA

REBAR 150.36' REBAR-REBAR
586.07' 39"E
FORMERLY PARCEL 150

REBAR 135.50' 04"E
20.93' 7"W REBAR
25.54' 24" REBAR-REBAR

599.52' 02"W COR
N93.56' 00"E

S 83° 47' 31" E -SR7-

S 83° 47' 31" E -L-

S 83° 47' 31" E -SR8-

HP STA. 949+64.2

END CONSTRUCTION
POT STA. 35+75.00 -SR8-

END TIP PROJECT R-2707E
POT STA. 957+00.00 -L-

FORMERLY PARCEL 144
649
J. SCOTT LEATHERMAN
& TONYA LEATHERMAN

HP STA. 949+64.2

JOY HARRIS WALTERS FAMILY TRUST

JOY HARRIS WALTERS TRUST

JOHN L. ETTERS & ANGELA H. ETTERS

TARRELL D. HOUSER

152
GARRET STEVEN DURBIN

153

154

SUSAN D. H. DOVER

FORMERLY PARCEL 150
650
SEAN C. CLARK

FORMERLY PARCEL 151
651
VMAX LLC & DARIUS SONAILA

REBAR 150.36' REBAR-REBAR
586.07' 39"E
FORMERLY PARCEL 150

REBAR 135.50' 04"E
20.93' 7"W REBAR
25.54' 24" REBAR-REBAR

599.52' 02"W COR
N93.56' 00"E

S 83° 47' 31" E -SR7-

S 83° 47' 31" E -L-

S 83° 47' 31" E -SR8-

HP STA. 949+64.2

END CONSTRUCTION
POT STA. 35+75.00 -SR8-

END TIP PROJECT R-2707E
POT STA. 957+00.00 -L-

FORMERLY PARCEL 144
649
J. SCOTT LEATHERMAN
& TONYA LEATHERMAN

HP STA. 949+64.2

JOY HARRIS WALTERS FAMILY TRUST

JOY HARRIS WALTERS TRUST

JOHN L. ETTERS & ANGELA H. ETTERS

TARRELL D. HOUSER

152
GARRET STEVEN DURBIN

153

154

SUSAN D. H. DOVER

FORMERLY PARCEL 150
650
SEAN C. CLARK

FORMERLY PARCEL 151
651
VMAX LLC & DARIUS SONAILA

REBAR 150.36' REBAR-REBAR
586.07' 39"E
FORMERLY PARCEL 150

REBAR 135.50' 04"E
20.93' 7"W REBAR
25.54' 24" REBAR-REBAR

599.52' 02"W COR
N93.56' 00"E

S 83° 47' 31" E -SR7-

S 83° 47' 31" E -L-

S 83° 47' 31" E -SR8-

HP STA. 949+64.2

END CONSTRUCTION
POT STA. 35+75.00 -SR8-

END TIP PROJECT R-2707E
POT STA. 957+00.00 -L-

FORMERLY PARCEL 144
649
J. SCOTT LEATHERMAN
& TONYA LEATHERMAN

HP STA. 949+64.2

JOY HARRIS WALTERS FAMILY TRUST

JOY HARRIS WALTERS TRUST

JOHN L. ETTERS & ANGELA H. ETTERS

TARRELL D. HOUSER

152
GARRET STEVEN DURBIN

153

154

SUSAN D. H. DOVER

FORMERLY PARCEL 150
650
SEAN C. CLARK

FORMERLY PARCEL 151
651
VMAX LLC & DARIUS SONAILA

REBAR 150.36' REBAR-REBAR
586.07' 39"E
FORMERLY PARCEL 150

REBAR 135.50' 04"E
20.93' 7"W REBAR
25.54' 24" REBAR-REBAR

599.52' 02"W COR
N93.56' 00"E

S 83° 47' 31" E -SR7-

S 83° 47' 31" E -L-

S 83° 47' 31" E -SR8-

HP STA. 949+64.2

END CONSTRUCTION
POT STA. 35+75.00 -SR8-

END TIP PROJECT R-2707E
POT STA. 957+00.00 -L-

FORMERLY PARCEL 144
649
J. SCOTT LEATHERMAN
& TONYA LEATHERMAN

HP STA. 949+64.2

JOY HARRIS WALTERS FAMILY TRUST

JOY HARRIS WALTERS TRUST

JOHN L. ETTERS & ANGELA H. ETTERS

TARRELL D. HOUSER

152
GARRET STEVEN DURBIN

153

154

SUSAN D. H. DOVER

FORMERLY PARCEL 150
650
SEAN C. CLARK

FORMERLY PARCEL 151
651
VMAX LLC & DARIUS SONAILA

REBAR 150.36' REBAR-REBAR
586.07' 39"E
FORMERLY PARCEL 150

REBAR 135.50' 04"E
20.93' 7"W REBAR
25.54' 24" REBAR-REBAR

599.52' 02"W COR
N93.56' 00"E

S 83° 47' 31" E -SR7-

S 83° 47' 31" E -L-

S 83° 47' 31" E -SR8-

HP STA. 949+64.2

END CONSTRUCTION
POT STA. 35+75.00 -SR8-

END TIP PROJECT R-2707E
POT STA. 957+00.00 -L-

FORMERLY PARCEL 144
649
J. SCOTT LEATHERMAN
& TONYA LEATHERMAN

HP STA. 949+64.2

JOY HARRIS WALTERS FAMILY TRUST

JOY HARRIS WALTERS TRUST

JOHN L. ETTERS & ANGELA H. ETTERS

TARRELL D. HOUSER

152
GARRET STEVEN DURBIN

153

154

SUSAN D. H. DOVER

FORMERLY PARCEL 150
650
SEAN C. CLARK

FORMERLY PARCEL 151
651
VMAX LLC & DARIUS SONAILA

REBAR 150.36' REBAR-REBAR
586.07' 39"E
FORMERLY PARCEL 150

REBAR 135.50' 04"E
20.93' 7"W REBAR
25.54' 24" REBAR-REBAR

599.52' 02"W COR
N93.56' 00"E

S 83° 47' 31" E -SR7-

S 83° 47' 31" E -L-

S 83° 47' 31" E -SR8-

HP STA. 949+64.2

END CONSTRUCTION
POT STA. 35+75.00 -SR8-

END TIP PROJECT R-2707E
POT STA. 957+00.00 -L-

FORMERLY PARCEL 144
649
J. SCOTT LEATHERMAN
& TONYA LEATHERMAN

HP STA. 949+64.2

JOY HARRIS WALTERS FAMILY TRUST

JOY HARRIS WALTERS TRUST

JOHN L. ETTERS & ANGELA H. ETTERS

TARRELL D. HOUSER

152
GARRET STEVEN DURBIN

153

154

SUSAN D. H. DOVER

FORMERLY PARCEL 150
650
SEAN C. CLARK

FORMERLY PARCEL 151
651
VMAX LLC & DARIUS SONAILA

REBAR 150.36' REBAR-REBAR
586.07' 39"E
FORMERLY PARCEL 150

REBAR 135.50' 04"E
20.93' 7"W REBAR
25.54' 24" REBAR-REBAR

599.52' 02"W COR
N93.56' 00"E

S 83° 47' 31" E -SR7-

S 83° 47' 31" E -L-

S 83° 47' 31" E -SR8-

HP STA. 949+64.2

END CONSTRUCTION
POT STA. 35+75.00 -SR8-

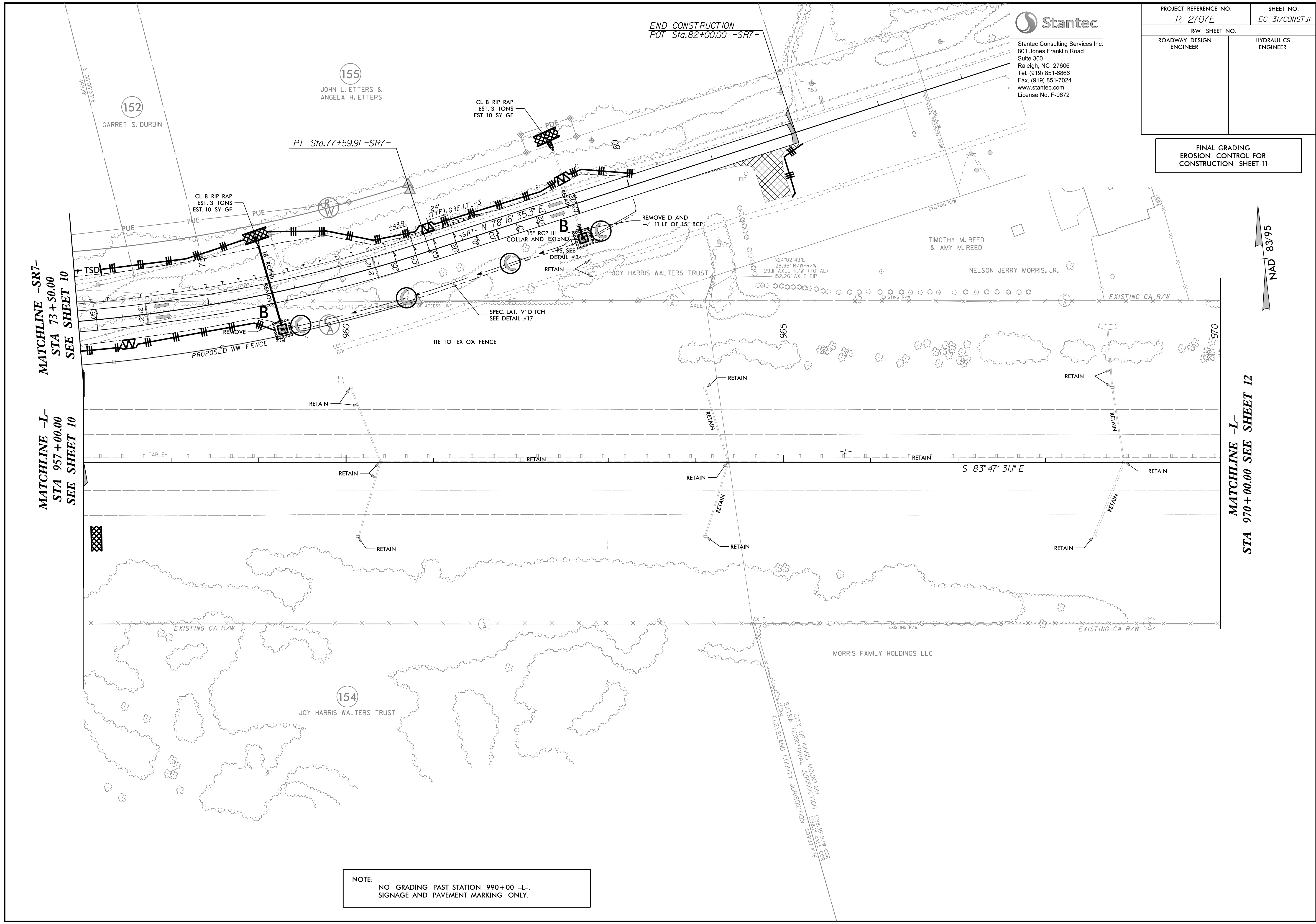
END TIP PROJECT R-2707E
POT STA. 957+00.00 -L-

FORMERLY PARCEL 144
649
J. SCOTT LEATHERMAN
& TONYA LEATHERMAN

Stantec
 Stantec Consulting Services Inc.
 801 Jones Franklin Road
 Suite 300
 Raleigh, NC 27606
 Tel. (919) 851-8866
 Fax. (919) 851-7024
 www.stantec.com
 License No. F-0672

PROJECT REFERENCE NO. <i>R-2707E</i>	SHEET NO. <i>EC-31/CONST.II</i>
RW SHEET NO.	
ROADWAY DESIGN ENGINEER	HYDRAULICS ENGINEER

FINAL GRADING
 EROSION CONTROL FOR
 CONSTRUCTION SHEET 11



END CONSTRUCTION
 POT Sta. 82+00.00 -SR7-

PT Sta. 77+59.91 -SR7-

MATCHLINE -SR7-
 STA 73+50.00
 SEE SHEET 10

MATCHLINE -L-
 STA 957+00.00
 SEE SHEET 10

MATCHLINE -L-
 STA 970+00.00
 SEE SHEET 12

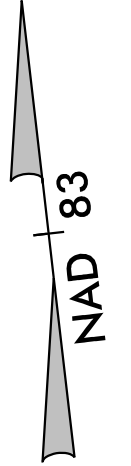
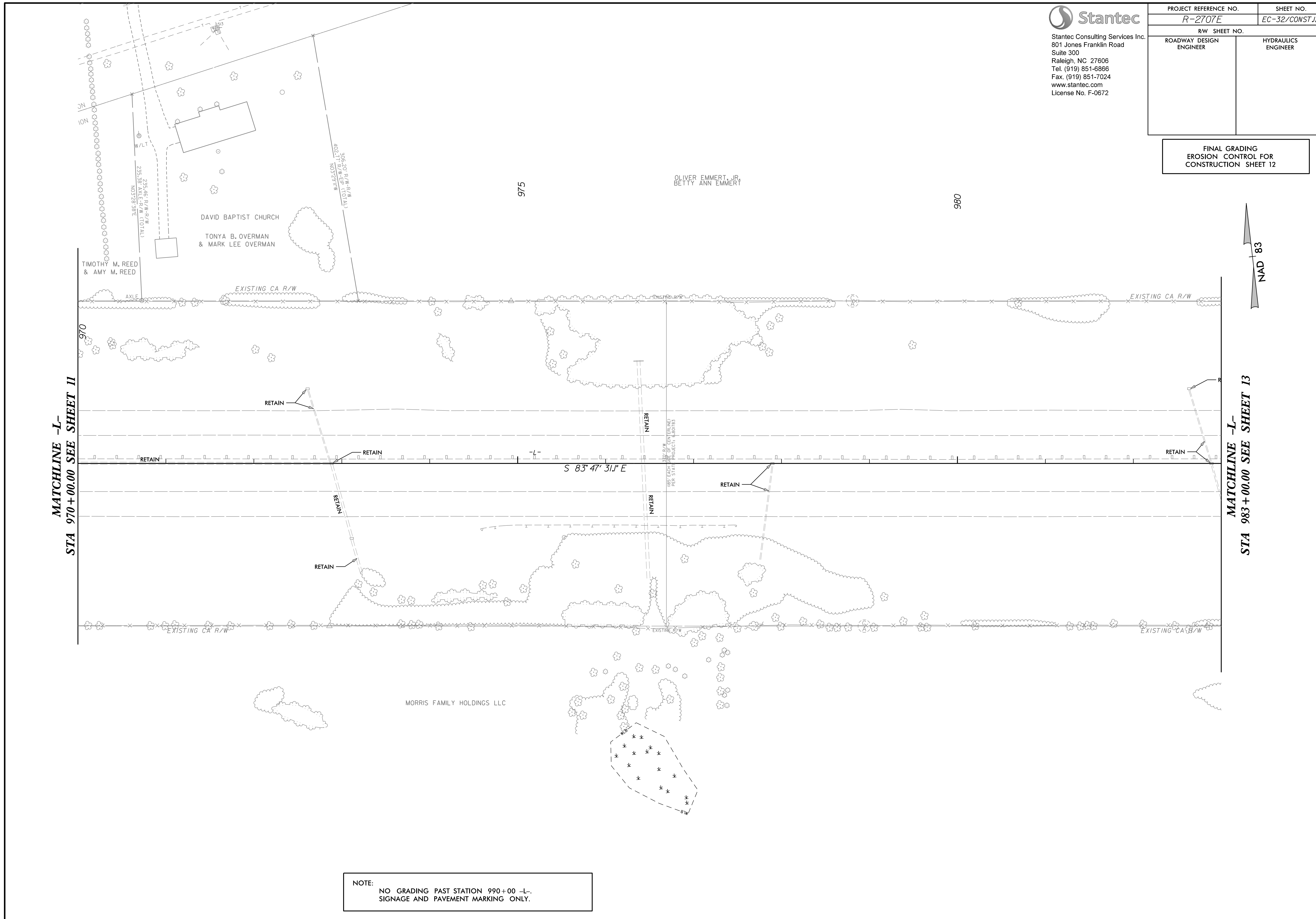
NOTE:
 NO GRADING PAST STATION 990+00 -L-
 SIGNAGE AND PAVEMENT MARKING ONLY.



Stantec Consulting Services Inc.
 801 Jones Franklin Road
 Suite 300
 Raleigh, NC 27606
 Tel. (919) 851-6866
 Fax. (919) 851-7024
 www.stantec.com
 License No. F-0672

PROJECT REFERENCE NO. <i>R-2707E</i>	SHEET NO. <i>EC-32/CONST.12</i>
RW SHEET NO.	
ROADWAY DESIGN ENGINEER	HYDRAULICS ENGINEER

FINAL GRADING
 EROSION CONTROL FOR
 CONSTRUCTION SHEET 12



MATCHLINE -L-
 STA 970+00.00 SEE SHEET 11

MATCHLINE -L-
 STA 983+00.00 SEE SHEET 13

NOTE:
 NO GRADING PAST STATION 990+00 -L-
 SIGNAGE AND PAVEMENT MARKING ONLY.

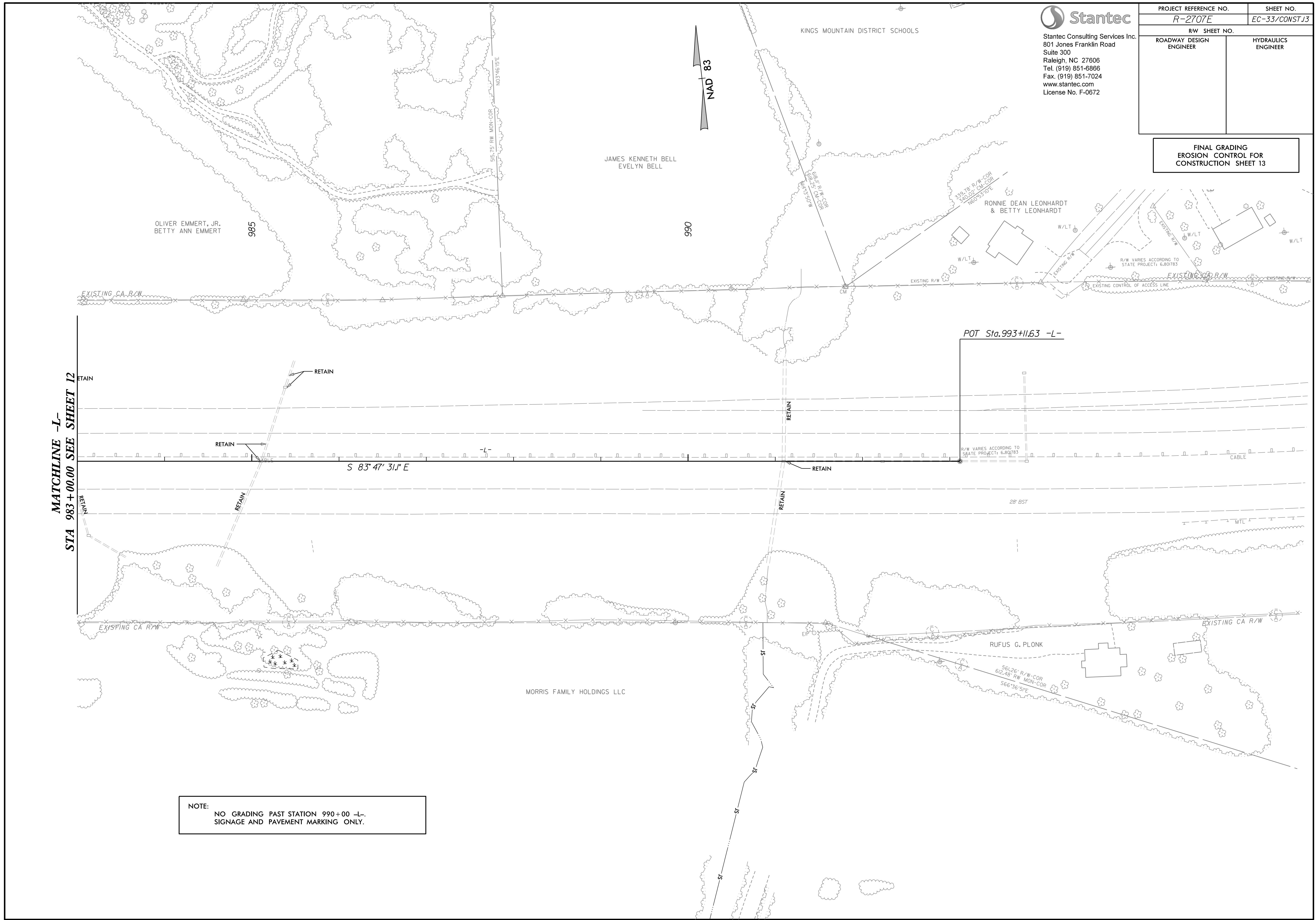


Stantec Consulting Services Inc.
 801 Jones Franklin Road
 Suite 300
 Raleigh, NC 27606
 Tel. (919) 851-6866
 Fax. (919) 851-7024
 www.stantec.com
 License No. F-0672

PROJECT REFERENCE NO. <i>R-2707E</i>	SHEET NO. <i>EC-33/CONST.13</i>
---	------------------------------------

RW SHEET NO.	
ROADWAY DESIGN ENGINEER	HYDRAULICS ENGINEER

FINAL GRADING
 EROSION CONTROL FOR
 CONSTRUCTION SHEET 13



MATCHLINE -L-
 STA 983+00.00 SEE SHEET 12

NOTE:
 NO GRADING PAST STATION 990+00 -L-.
 SIGNAGE AND PAVEMENT MARKING ONLY.

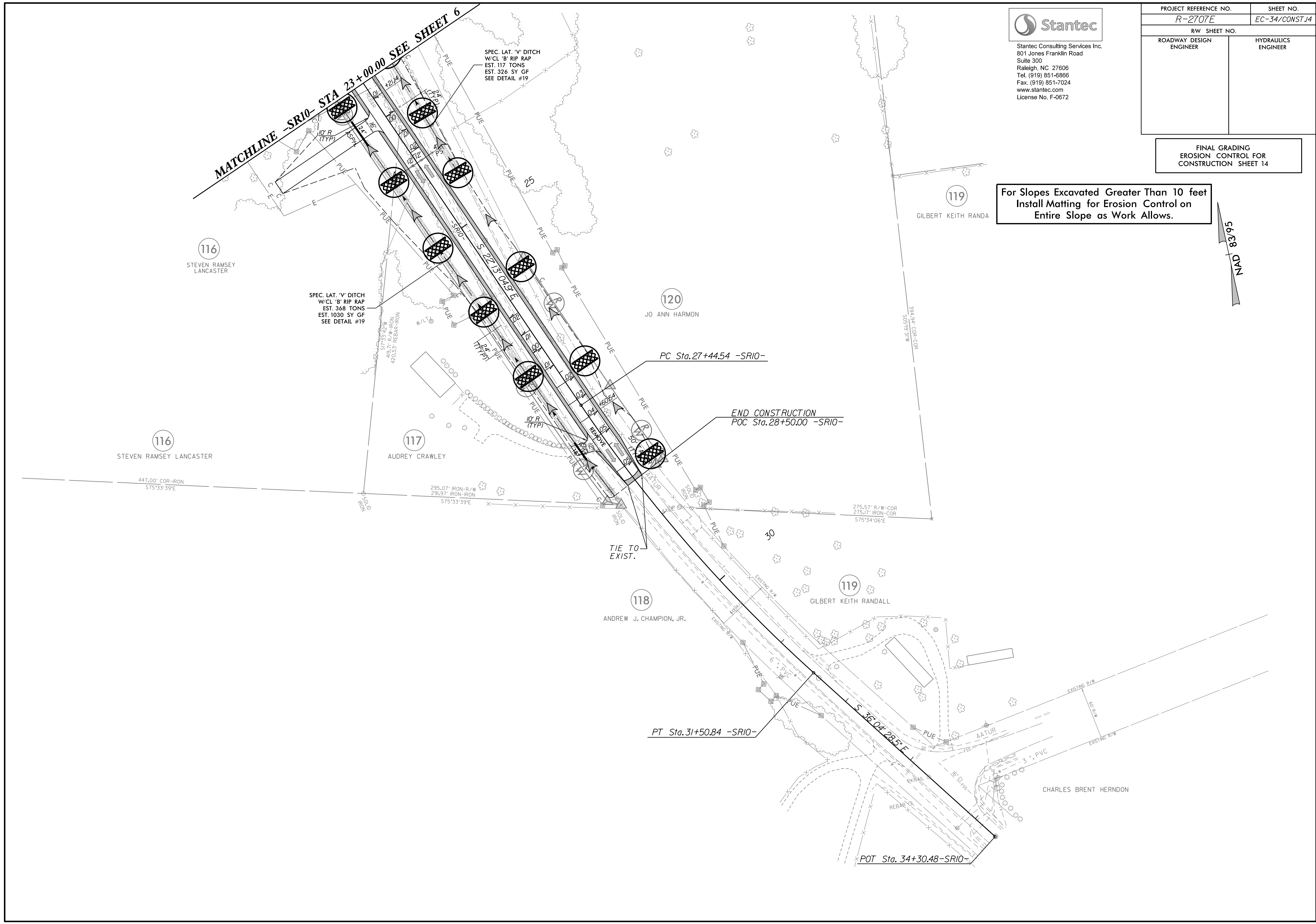
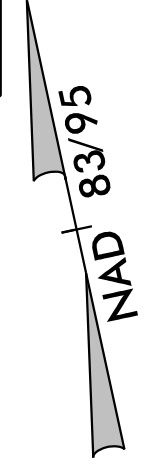


Stantec Consulting Services Inc.
801 Jones Franklin Road
Suite 300
Raleigh, NC 27606
Tel. (919) 851-6866
Fax. (919) 851-7024
www.stantec.com
License No. F-0672

PROJECT REFERENCE NO.	SHEET NO.
R-2707E	EC-34/CONST.14
RW SHEET NO.	
ROADWAY DESIGN ENGINEER	HYDRAULICS ENGINEER

FINAL GRADING
EROSION CONTROL FOR
CONSTRUCTION SHEET 14

For Slopes Excavated Greater Than 10 feet
Install Matting for Erosion Control on
Entire Slope as Work Allows.



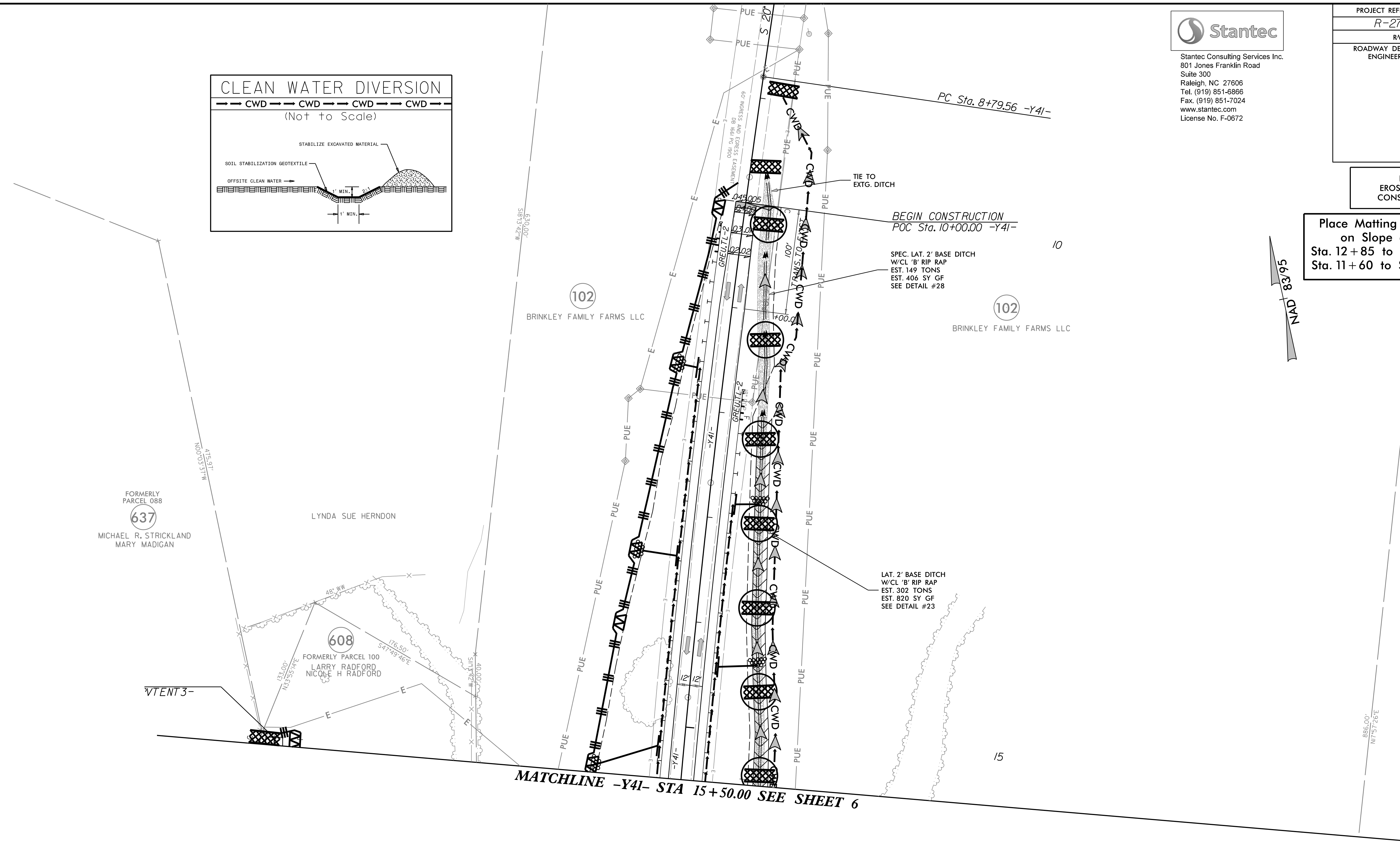
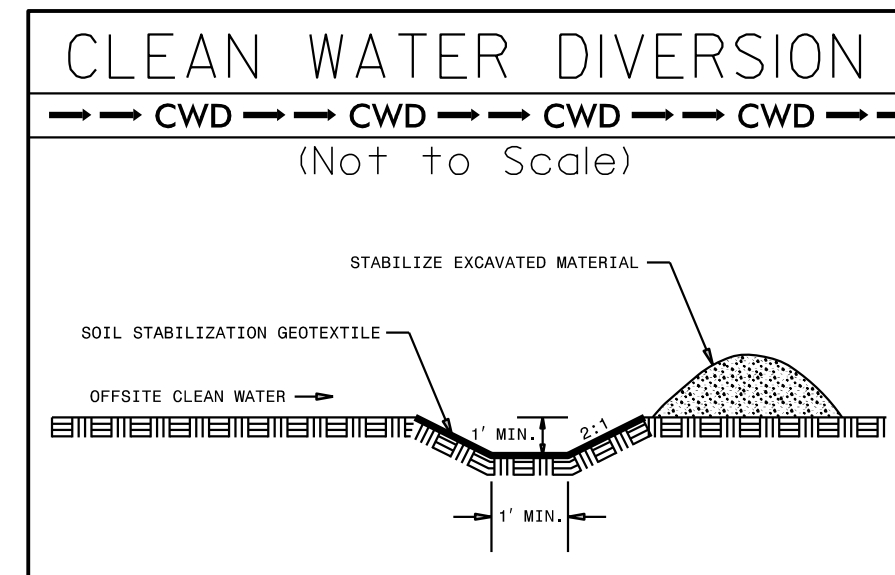


Stantec Consulting Services Inc.
 801 Jones Franklin Road
 Suite 300
 Raleigh, NC 27606
 Tel. (919) 851-6866
 Fax. (919) 851-7024
 www.stantec.com
 License No. F-0672

PROJECT REFERENCE NO.	SHEET NO.
R-2707E	EC-35/CONST.15
RW SHEET NO.	
ROADWAY DESIGN ENGINEER	HYDRAULICS ENGINEER

FINAL GRADING
 EROSION CONTROL FOR
 CONSTRUCTION SHEET 15

Place Matting for Erosion Control
 on Slope as Work Allows.
 Sta. 12+85 to Sta. 15+50 -Y41- LT
 Sta. 11+60 to Sta. 15+50 -Y41- RT



FORMERLY PARCEL 088
 637
 MICHAEL R. STRICKLAND
 MARY MADIGAN

608
 FORMERLY PARCEL 100
 LARRY RADFORD
 NICOLE H RADFORD

102
 BRINKLEY FAMILY FARMS LLC

102
 BRINKLEY FAMILY FARMS LLC

LAT. 2' BASE DITCH
 W/CL B' RIP RAP
 EST. 302 TONS
 EST. 820 SY GF
 SEE DETAIL #23

MATCHLINE -Y41- STA 15+50.00 SEE SHEET 6