

NOTES

APPROACH SLAB SHALL NOT BE CONSTRUCTED PRIOR TO COMPLETION OF THE BRIDGE DECK.

FOR BRIDGE APPROACH FILL INCLUDING GEOTEXTILE, 6" Ø DRAINAGE PIPE, AND SELECT MATERIAL, SEE ROADWAY PLANS.

GEOTEXTILE SHALL BE TYPE 1 IN ACCORDANCE WITH THE STANDARD SPECIFICATIONS SECTION 1056.

SELECT MATERIAL BACKFILL (CLASS V OR CLASS VI) SHALL BE IN ACCORDANCE WITH STANDARD SPECIFICATIONS SECTION 1016.

SELECT MATERIAL BACKFILL IS TO BE CONTINUOUS ALONG FILL FACE OF BACKWALL FROM OUTSIDE EDGE TO OUTSIDE EDGE OF APPROACH SLAB.

FOR THE 6" Ø DRAINAGE PIPE OUTLET(S), SEE ROADWAY STANDARD DRAWINGS.

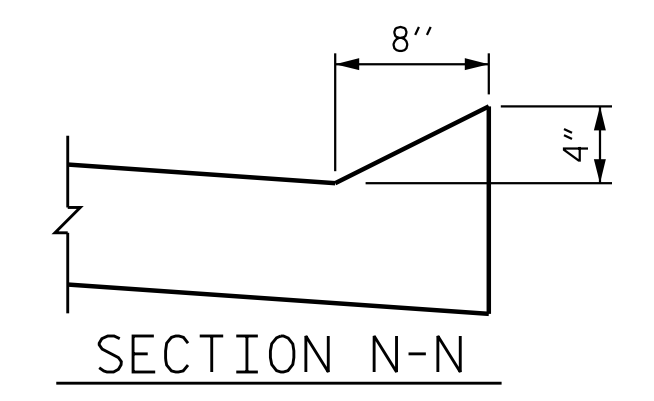
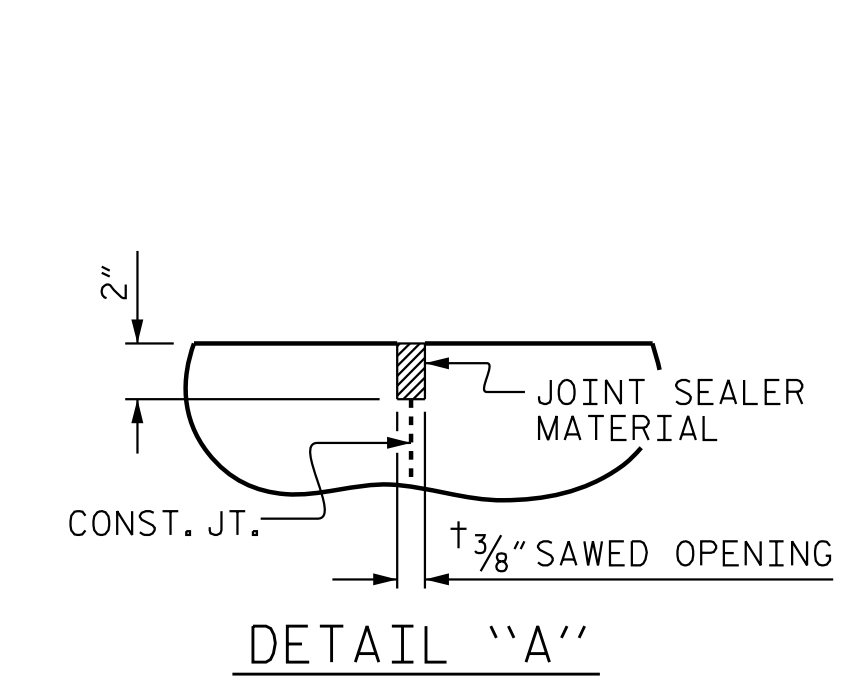
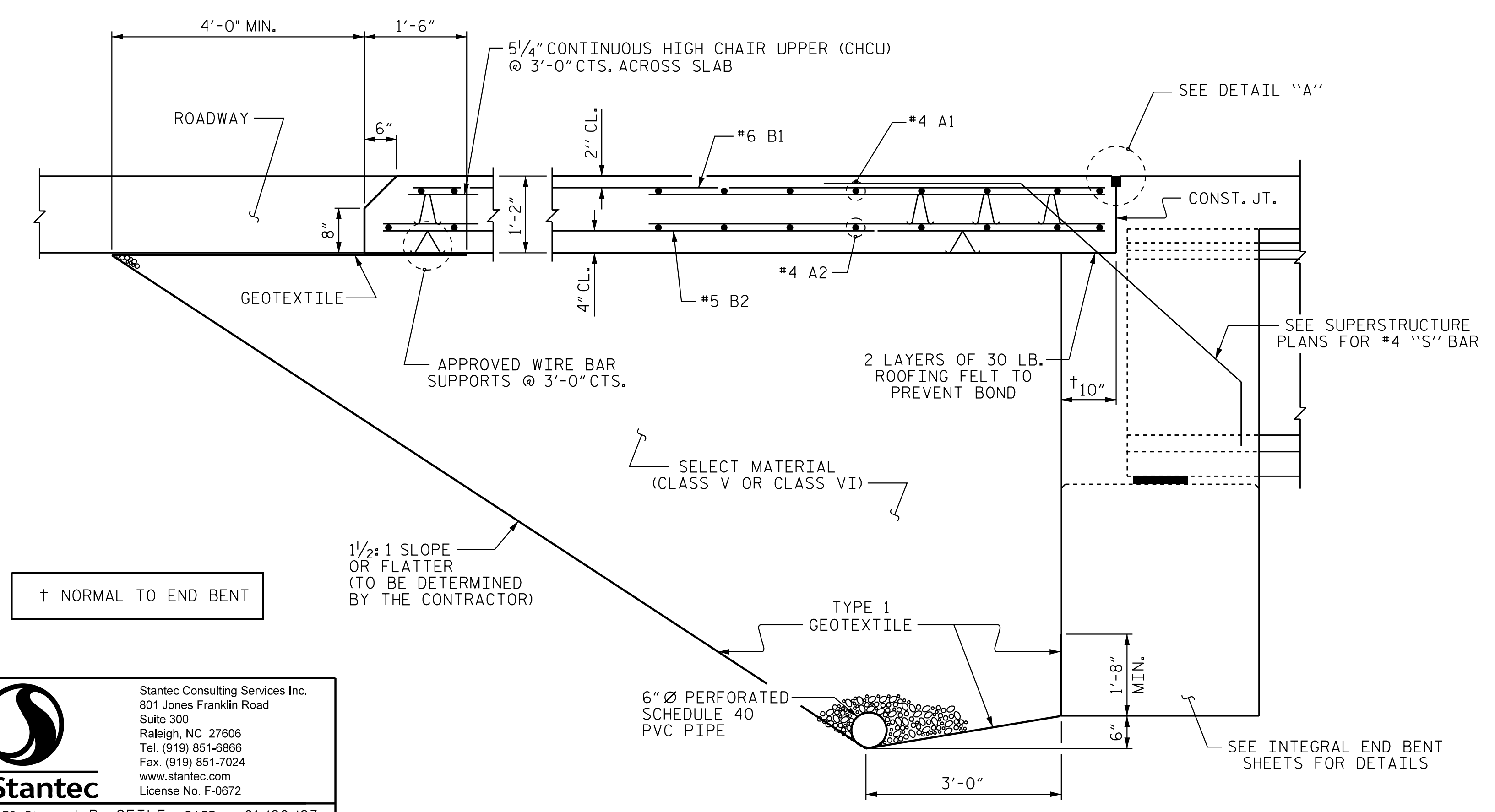
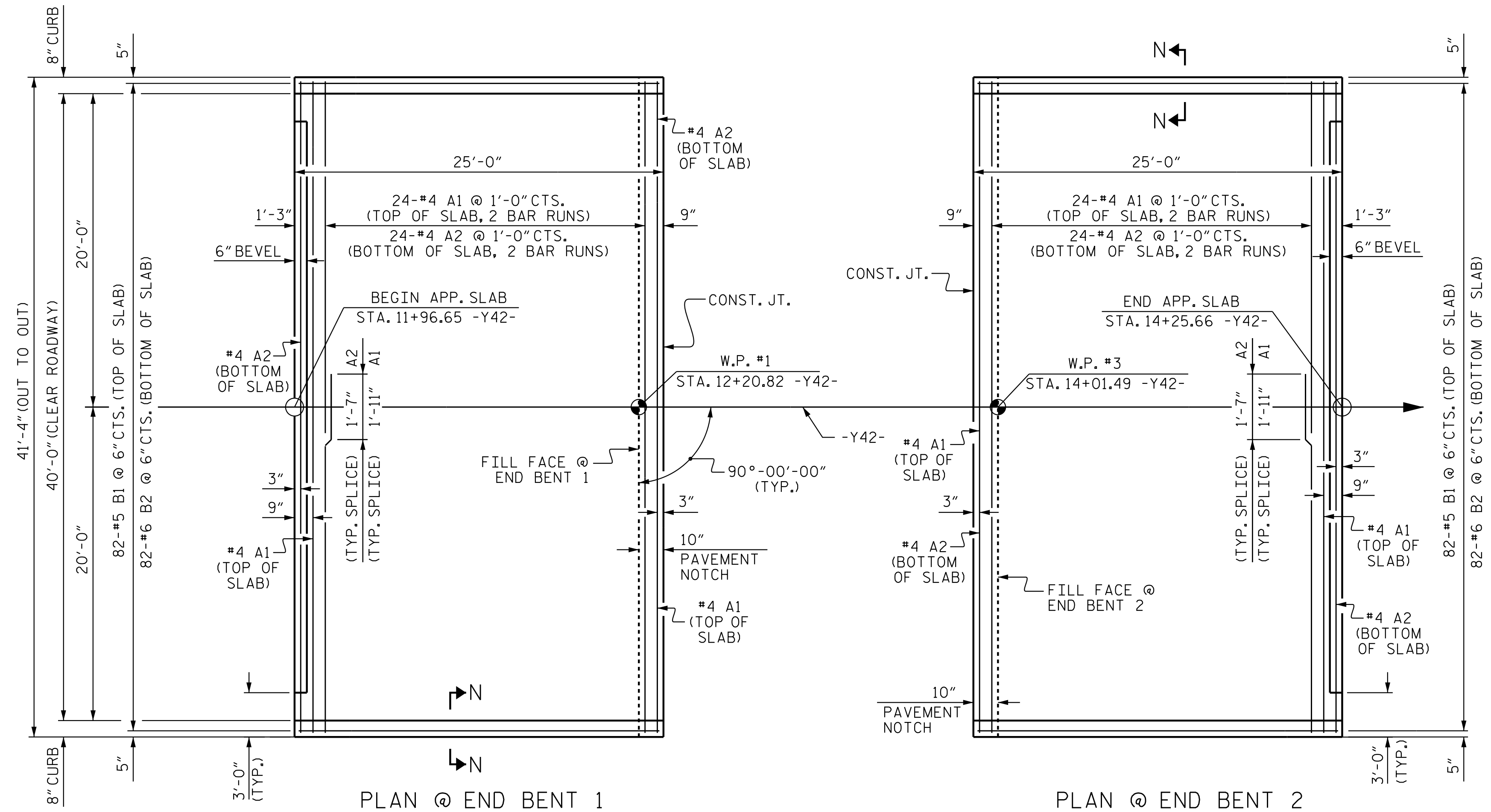
AREA BETWEEN THE WINGWALL AND APPROACH SLAB SHALL BE GRADED TO DRAIN THE WATER AWAY FROM THE FILL FACE OF THE BRIDGE AND SHALL BE PAVED. SEE ROADWAY PLANS.

THE JOINT OPENING AT THE APPROACH SLAB/DECK INTERFACE SHALL BE SAWED NO MORE THAN 12 HOURS AFTER THE APPROACH SLAB IS CAST. THE JOINT SHALL BE CLEANED OF ALL DEBRIS BEFORE THE SEALANT IS APPLIED. THE JOINT SEALER MATERIAL SHALL CONFORM TO THE REQUIREMENTS OF SECTION 1028-3 OF THE STANDARD SPECIFICATIONS.

AT THE CONTRACTORS OPTION, "TYPE A - ALTERNATE APPROACH FILL" IN LIEU OF "TYPE I - STANDARD APPROACH FILL" MAY BE CONSTRUCTED AT NO ADDITIONAL COST TO THE DEPARTMENT. SEE SHEET 2 OF 2 FOR DETAILS AND NOTES.

| BILL OF MATERIAL | | | | | |
|----------------------------------|-----|------|------|--------|--------|
| FOR ONE APPROACH SLAB (2 REQ'D) | | | | | |
| BAR | NO. | SIZE | TYPE | LENGTH | WEIGHT |
| * A1 | 52 | #4 | STR | 21'-6" | 747 |
| A2 | 52 | #4 | STR | 21'-4" | 741 |
| * B1 | 82 | #5 | STR | 24'-2" | 2067 |
| B2 | 82 | #6 | STR | 24'-7" | 3028 |
| REINFORCING STEEL | | | | LBS. | 3769 |
| * EPOXY COATED REINFORCING STEEL | | | | LBS. | 2814 |
| CLASS AA CONCRETE | | | | C. Y. | 44.7 |

| SPLICE LENGTHS | | |
|----------------|--------------|----------|
| BAR SIZE | EPOXY COATED | UNCOATED |
| #4 | 1'-11" | 1'-7" |
| #5 | 2'-5" | 2'-0" |
| #6 | 3'-7" | 2'-5" |



PROJECT NO. R-2707E

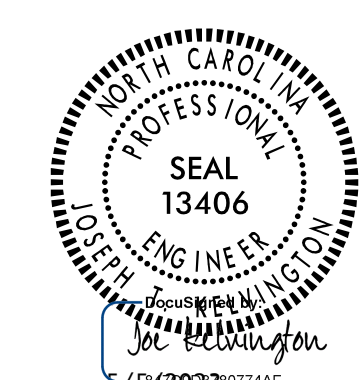
CLEVELAND COUNTY

STATION: 13+08.49 -Y42-

SHEET 1 OF 2

STATE OF NORTH CAROLINA
DEPARTMENT OF TRANSPORTATION
RALEIGH

STANDARD
BRIDGE APPROACH SLAB
FOR INTEGRAL ABUTMENT
WITH FLEXIBLE PAVEMENT



| REVISIONS | | | | | | SHEET NO. S7-33 |
|-----------|-----|-------|-----|-----|-------|--------------------|
| NO. | BY: | DATE: | NO. | BY: | DATE: | |
| 1 | | | 3 | | | TOTAL SHEETS 34 |
| 2 | | | 4 | | | |

DOCUMENT NOT CONSIDERED FINAL UNLESS ALL SIGNATURES COMPLETED

5/5/2023 12:53:23 PM jgelle

Stantec Consulting Services Inc.
801 Jones Franklin Road
Suite 300
Raleigh, NC 27606
Tel. (919) 851-6866
Fax. (919) 851-7024
www.stantec.com
License No. F-0672

ASSEMBLED BY: J. B. GETLE DATE: 01/20/23
CHECKED BY: A. L. BOYKIN DATE: 02/17/23

DRAWN BY: TLA 10/05 REV. 12/21/11 MAA/GM
CHECKED BY: GM 5/06 REV. 6/13 MAA/GM
REV. 12/17 MAA/THC

DESIGN ENGINEER OF RECORD: J. T. KELVINGTON DATE: 05/05/23