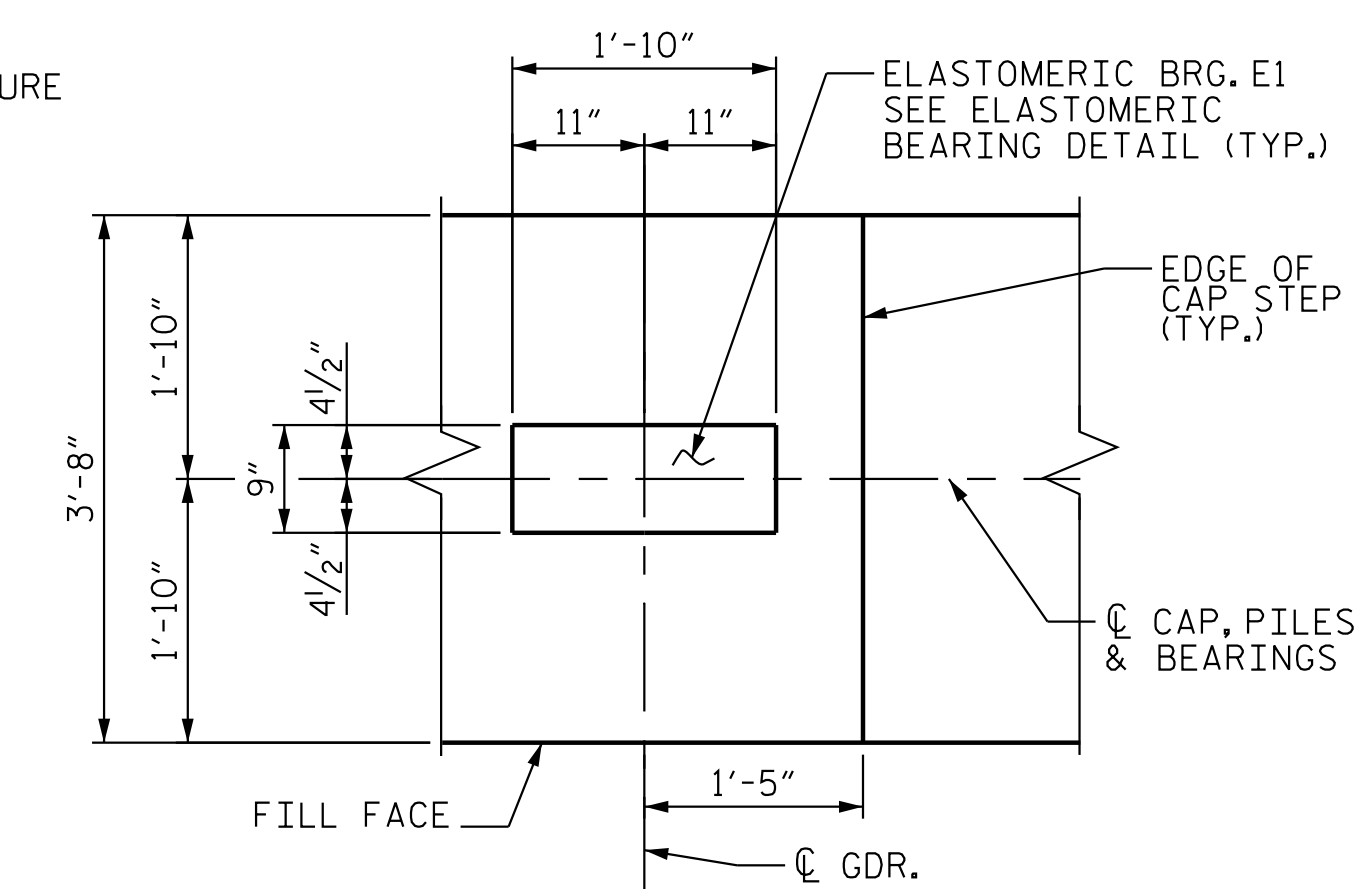


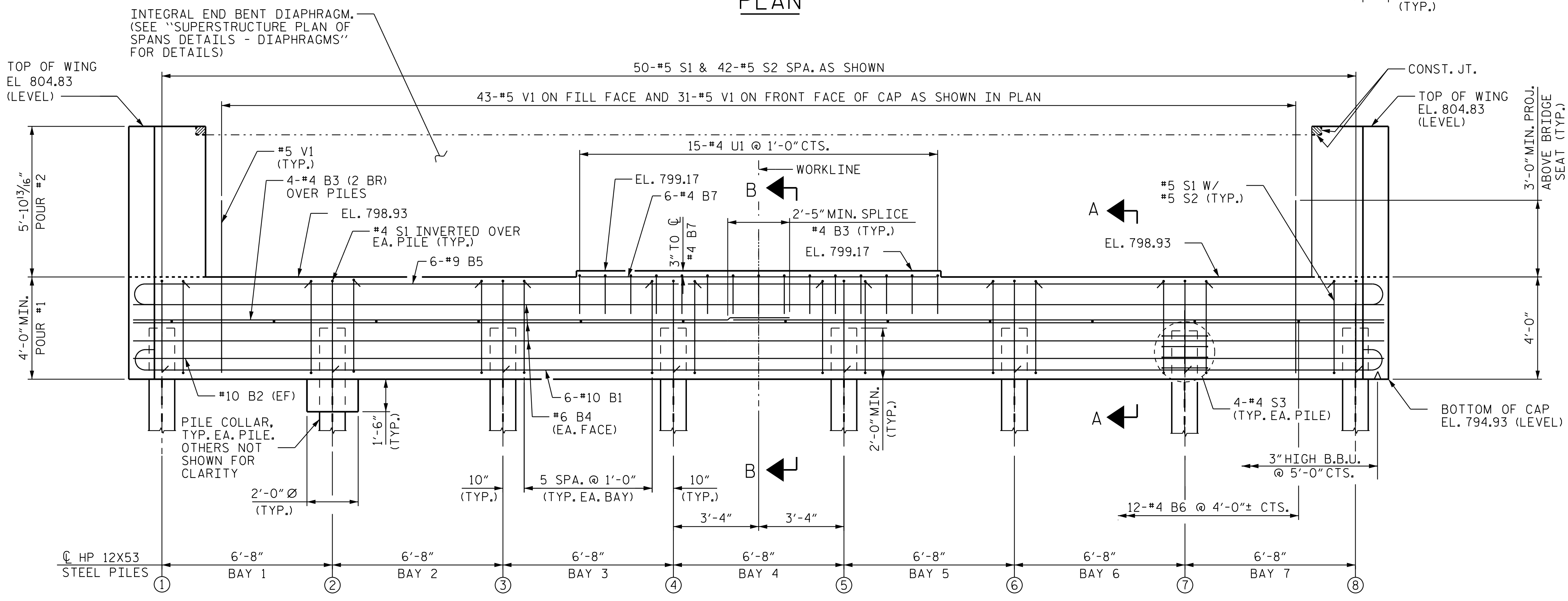
PLAN



DETAIL A  
DIMENSIONS TYPICAL FOR EACH BEARING

NOTES

- THE TOP SURFACE OF THE CAP OUTSIDE OF THE LIMITS OF THE INTEGRAL END BENT DIAPHRAGM SHALL BE CURED IN ACCORDANCE WITH THE SPECIFICATIONS EXCEPT THE MEMBRANE CURING COMPOUND METHOD SHALL NOT BE USED.
- FOR WING WALL DETAILS, SEE "END BENT 1, DETAILS - WING WALLS" SHT. 2 OF 3.
- (2 BR) DENOTES 2 BAR RUN.
- (EF) DENOTES EACH FACE
- CHAMFERS ARE NOT REQUIRED EXCEPT AS NOTED.
- (A) SLOPED CAP SURFACE BEYOND LIMIT OF THE INTEGRAL DIAPHRAGM SEE END BENT 1 DETAILS, SHT. 2 OF 2.
- FOR SECTION A-A & SECTION B-B, SEE END BENT 1, SHT. 3 OF 3.

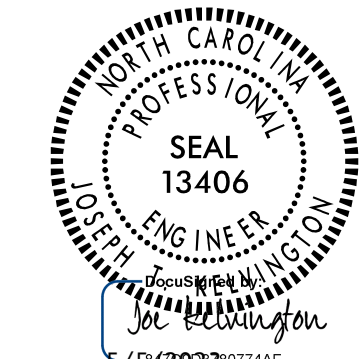


ELEVATION

PROJECT NO. R-2707E  
CLEVELAND COUNTY  
STATION: 13+08.49 -Y42-

SHEET 1 OF 3

STATE OF NORTH CAROLINA  
DEPARTMENT OF TRANSPORTATION  
RALEIGH  
SUBSTRUCTURE  
END BENT 1



REVISIONS						SHEET NO.	
NO.	BY:	DATE:	NO.	BY:	DATE:	S7-23	
1			3			TOTAL SHEETS	
2			4			34	

DOCUMENT NOT CONSIDERED FINAL UNLESS ALL SIGNATURES COMPLETED

Stantec Consulting Services Inc.  
801 Jones Franklin Road  
Suite 300  
Raleigh, NC 27606  
Tel. (919) 851-6866  
Fax. (919) 851-7024  
www.stantec.com  
License No. F-0672

DRAWN BY: J. B. GEILE DATE: 01/17/23  
CHECKED BY: A. L. BOYKIN DATE: 02/17/23  
DESIGN ENGINEER OF RECORD: J. T. KELVINGTON DATE: 05/05/23

c:\users\jgelle\documents\p\_w\working\smj\el01\2200494.DGN 5/5/2023 12:50:02 PM jgelle