

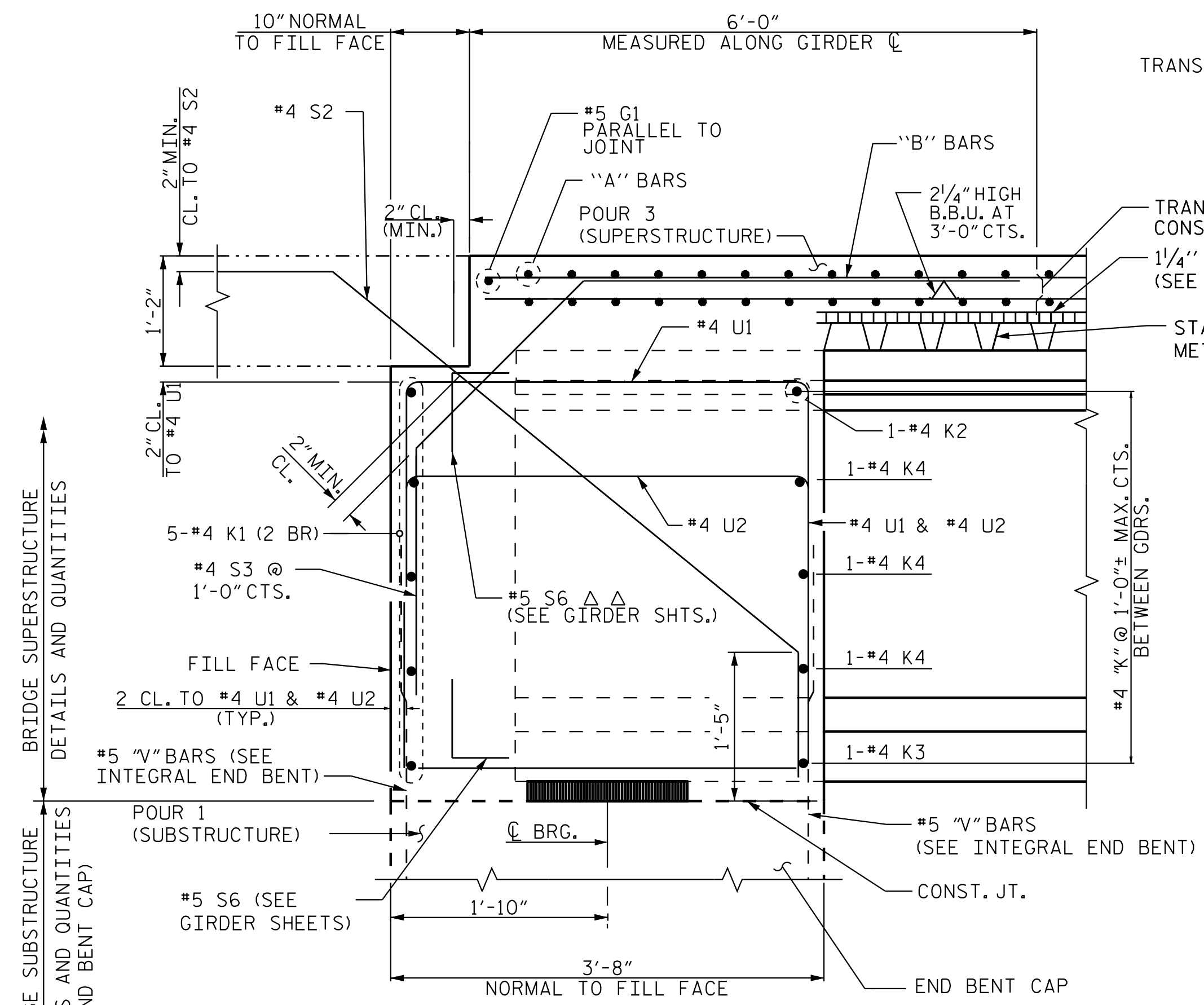
**NOTES**

PROVIDE 1/4" HIGH BEAM BOLSTERS UPPER AT 4'-0" CTS. ATOP THE METAL STAY-IN-PLACE FORMS TO SUPPORT THE BOTTOM MAT OF "A" BARS. WHEN USING REMOVABLE FORMS, PROVIDE CONTINUOUS HIGH CHAIRS FOR METAL DECK (C.H.C.M.) @ 4'-0" CTS. WITH A HEIGHT TO SUPPORT THE BOTTOM MAT OF "A" BARS A CLEAR DISTANCE OF 2 1/2" ABOVE THE TOP OF THE REMOVABLE FORM.

LONGITUDINAL STEEL MAY BE SHIFTED SLIGHTLY, AS NECESSARY, TO AVOID INTERFERENCE WITH STIRRUPS IN PRESTRESSED CONCRETE GIRDERS.

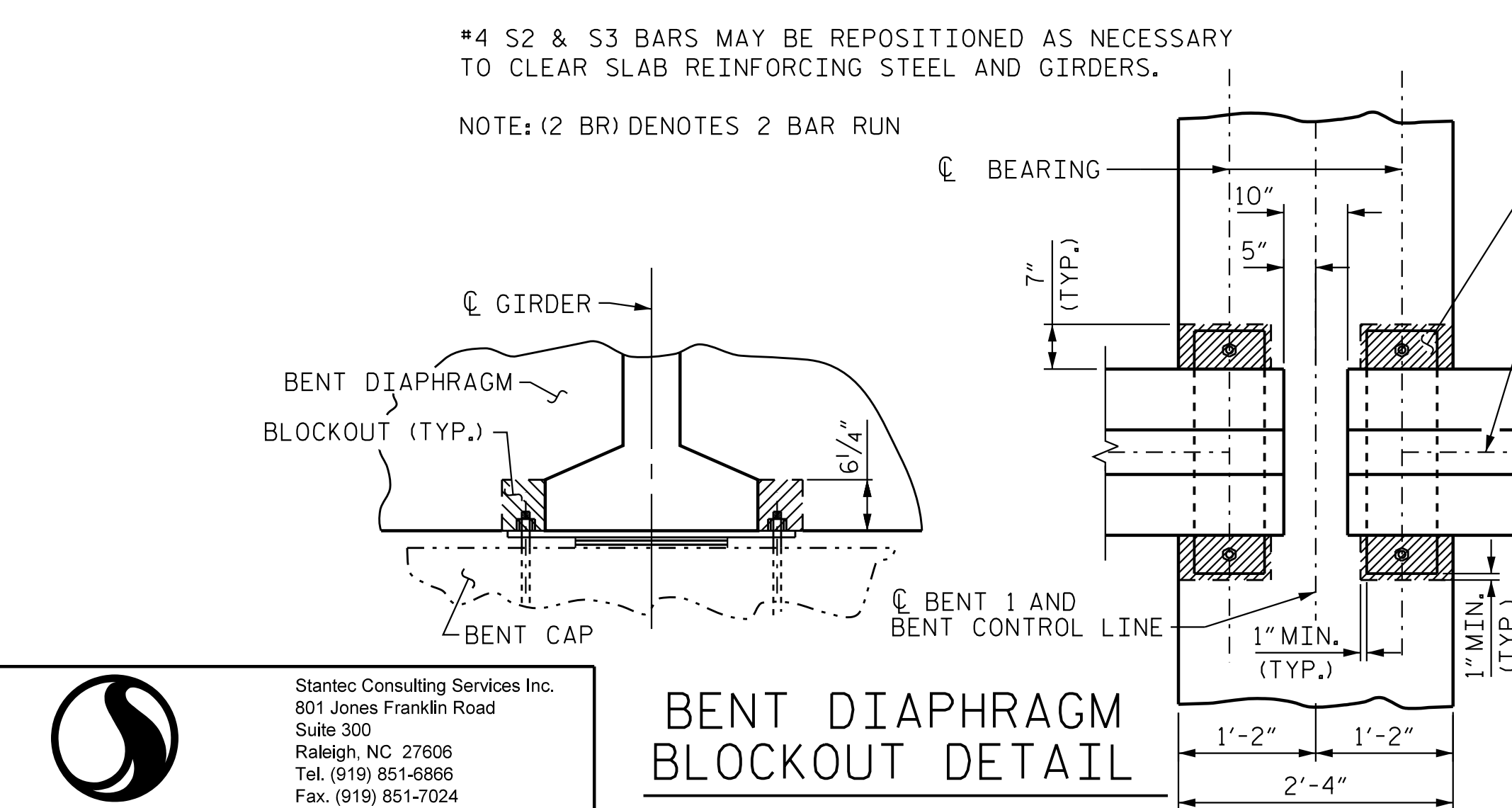
NO CHAMFER IS REQUIRED ON CORNERS OF GIRDER BUILDS.

PREVIOUSLY CAST CONCRETE IN A CONTINUOUS UNIT SHALL HAVE ATTAINED A MINIMUM COMPRESSIVE STRENGTH OF 3,000 PSI BEFORE ADDITIONAL CONCRETE IS CAST IN THE UNIT EXCEPT AS NOTED IN THE PLANS.

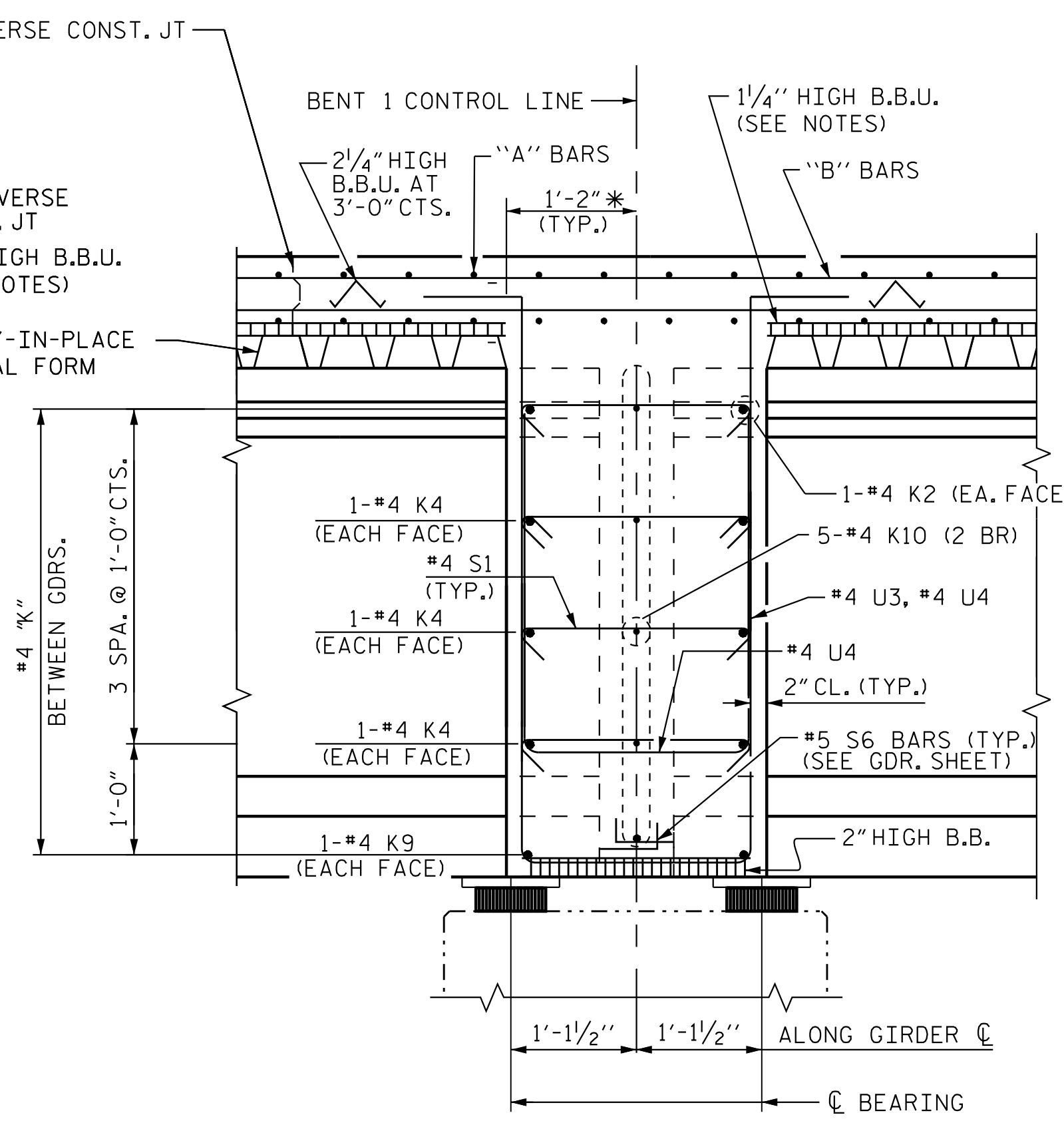


**SECTION B-B**  
SECTION THRU INTEGRAL END BENT DIAPHRAGM  
SEE "PLAN OF SPANS - DIAPHRAGMS", SHEET 3 OF 3

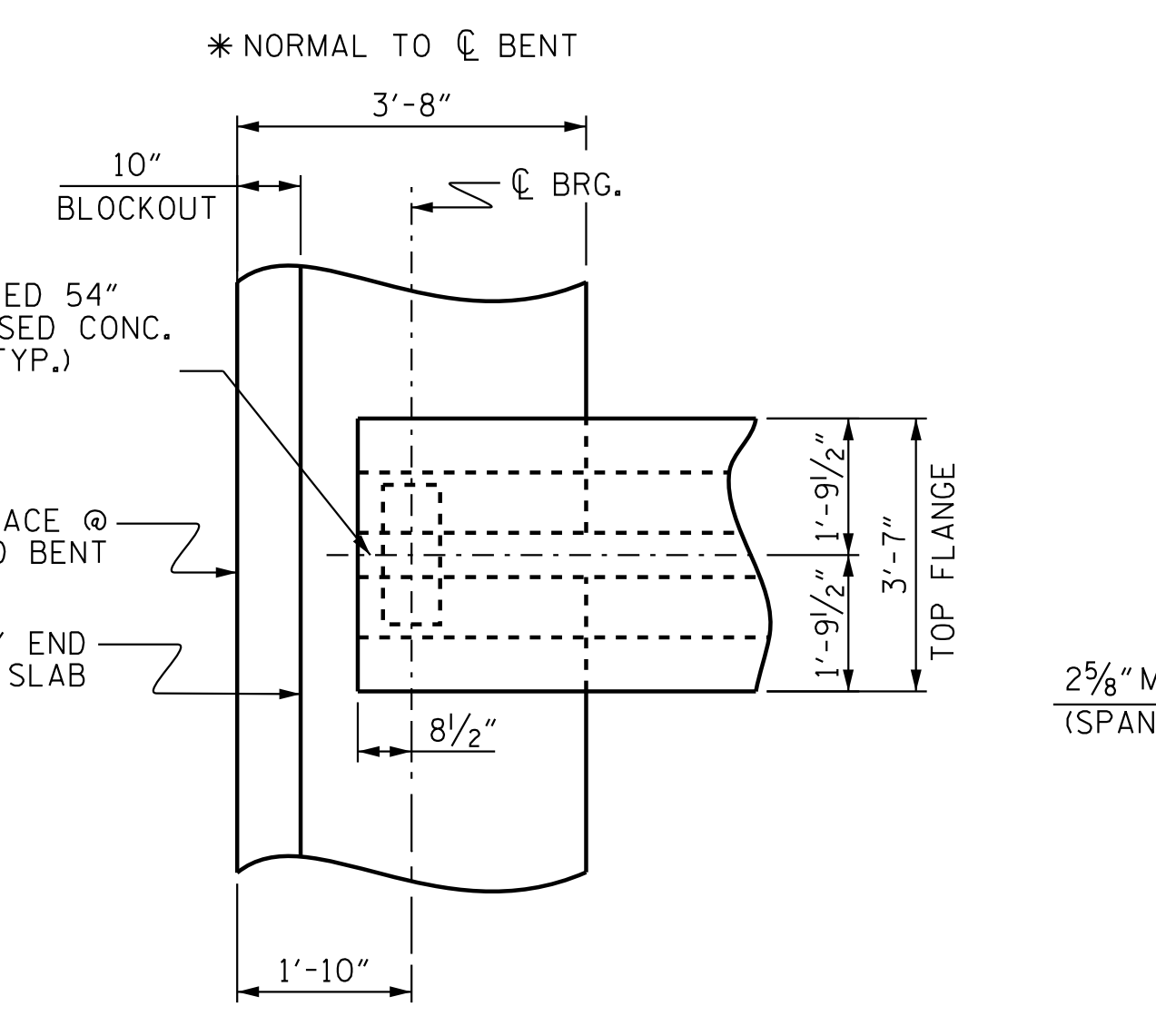
△△ #5 S6 TOP OF GIRDER MAY BE FIELD BENT AS NECESSARY TO CLEAR 1'-2" DEEP PAV'T. NOTCH



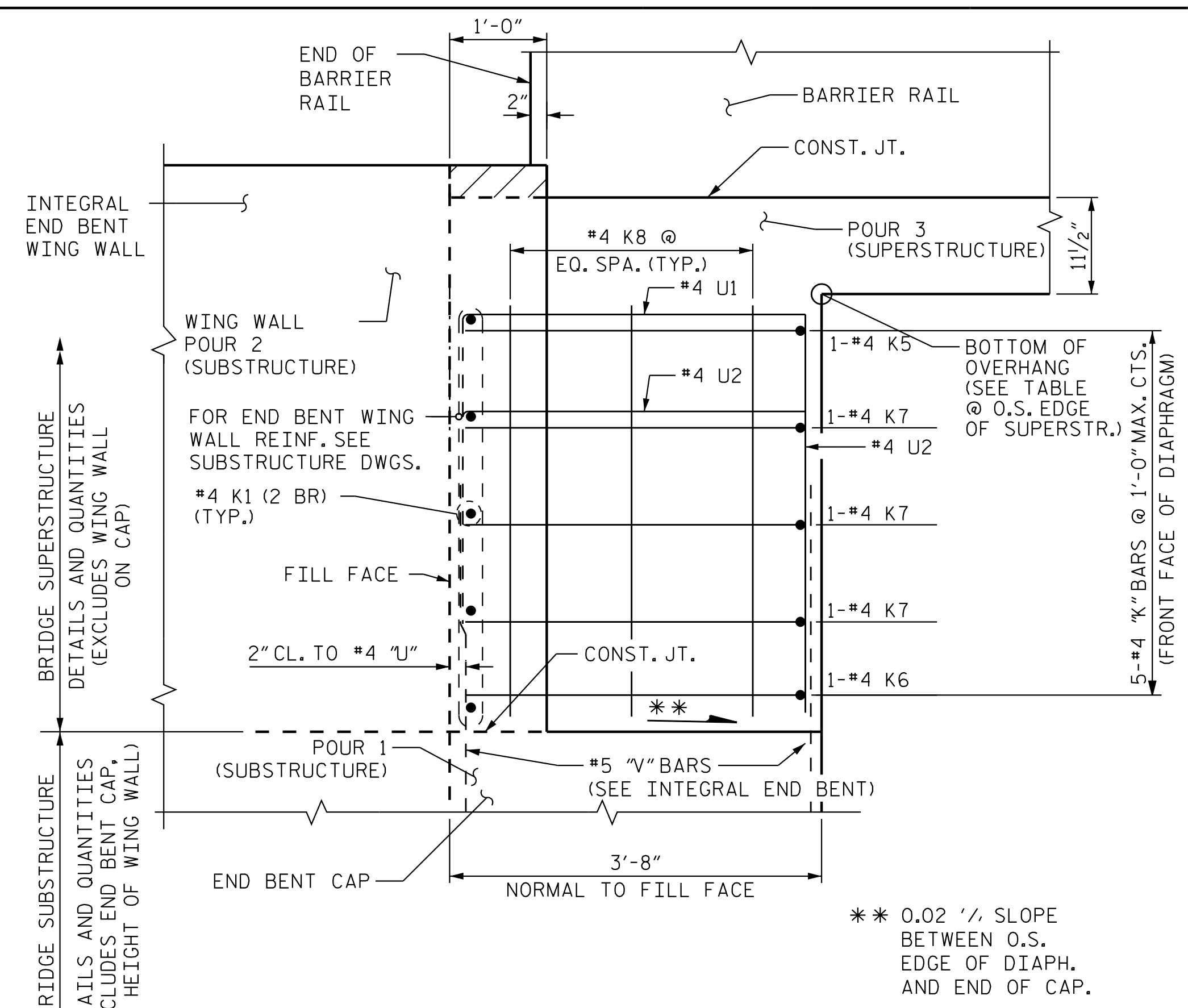
**BENT DIAPHRAGM BLOCKOUT DETAIL**



**SECTION A-A**  
SECTION THRU DIAPHRAGM @ INTERIOR BENT  
SEE "PLAN OF SPANS DETAILS - DIAPHRAGMS", SHEET 3 OF 3



**PLAN OF INTEGRAL END BENT**

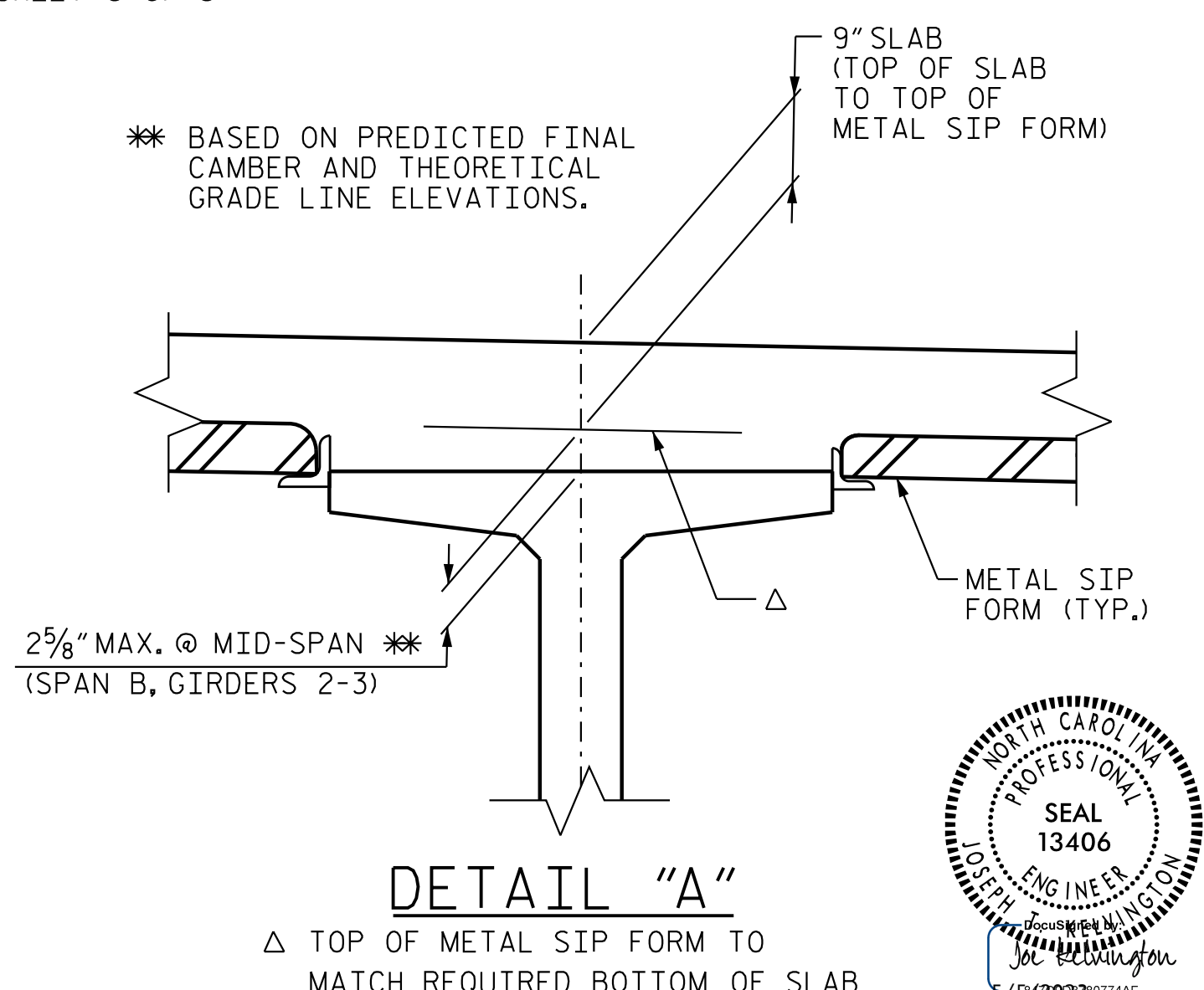


**ELEVATION C-C**

VIEW OF INTEGRAL END BENT BACKWALL AND DIAPHRAGM BEYOND O.S. EDGE OF DECK SLAB. SEE "PLAN OF SPAN DETAILS - DIAPHRAGMS", SHEET 3 OF 3

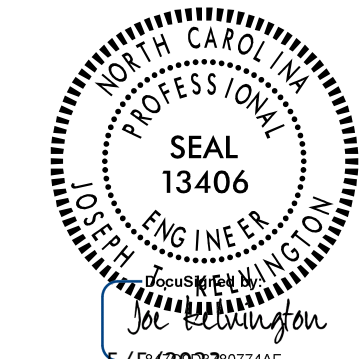
**BOTTOM OF OVERHANG ELEV. @ OUTSIDE EDGE OF SUPERSTR.**

OVERHANG	END BENT	ELEV.
LEFT SIDE	1	803.55
RIGHT SIDE	1	803.55
LEFT SIDE	2	803.32
RIGHT SIDE	2	803.32



**DETAIL "A"**

△ TOP OF METAL SIP FORM TO MATCH REQUIRED BOTTOM OF SLAB



PROJECT NO. R-2707E  
CLEVELAND COUNTY  
STATION: 13+08.49 -Y42-

SHEET 3 OF 3

STATE OF NORTH CAROLINA  
DEPARTMENT OF TRANSPORTATION  
RALEIGH  
SUPERSTRUCTURE

**TYPICAL SECTION DETAILS**

REVISIONS						SHEET NO. S7-08
NO.	BY:	DATE:	NO.	BY:	DATE:	
1			3			TOTAL SHEETS 34
2			4			

DOCUMENT NOT CONSIDERED FINAL UNLESS ALL SIGNATURES COMPLETED

5/5/2023 12:44:44 PM jgelle  
c:\users\jgelle\documents\p\_wor\king\dms5559\R2707E.SML.IS03.220494.dgn

Stantec Consulting Services Inc.  
801 Jones Franklin Road  
Suite 300  
Raleigh, NC 27606  
Tel. (919) 851-6866  
Fax. (919) 851-7024  
www.stantec.com  
License No. F-0672

DRAWN BY: J. B. GEILE DATE: 01/11/23  
CHECKED BY: A. L. BOYKIN DATE: 02/17/23  
DESIGN ENGINEER OF RECORD: J. T. KELVINGTON DATE: 05/05/23