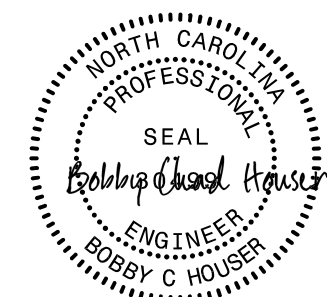
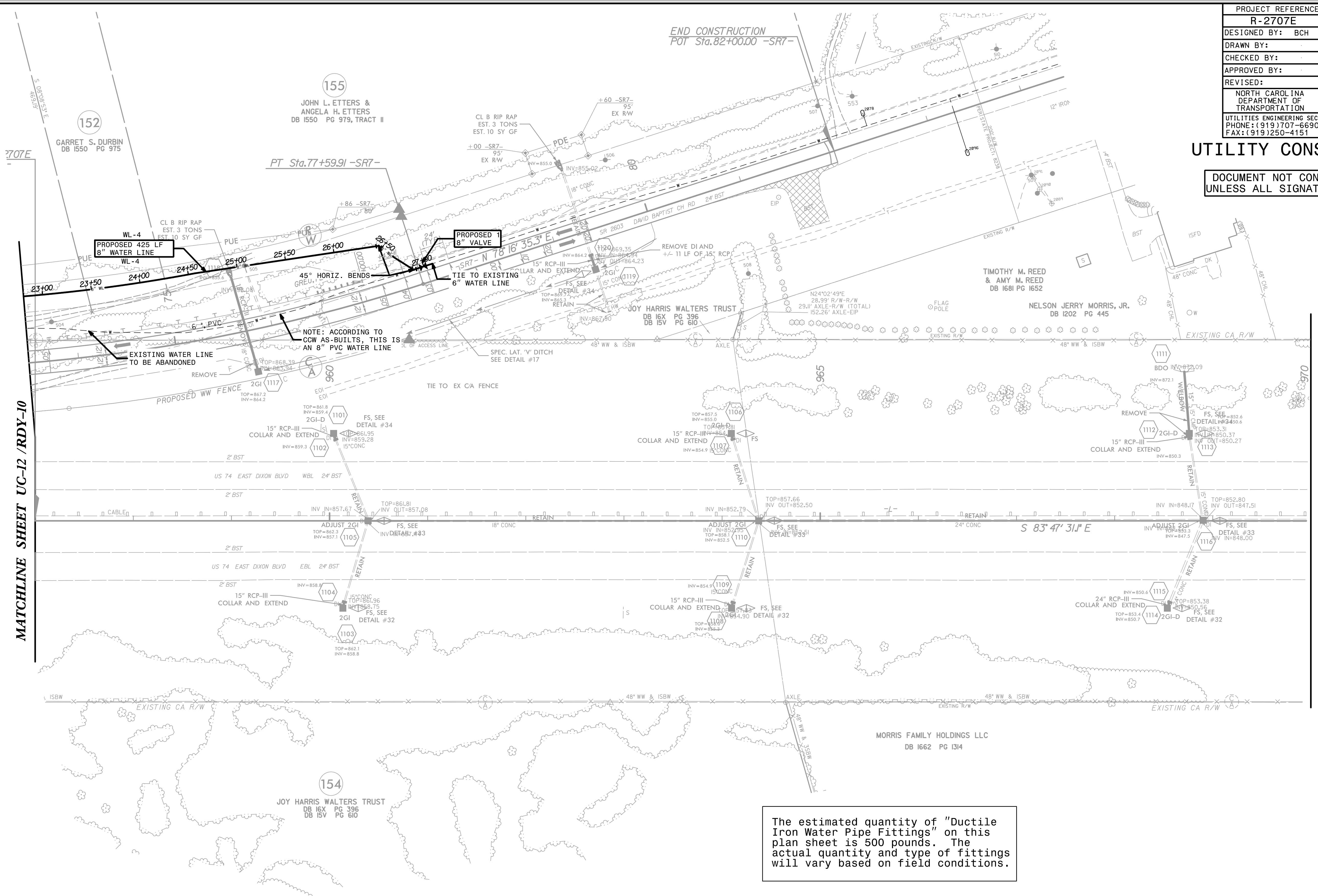
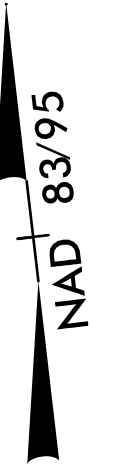


5/14/23

PROJECT REFERENCE NO.	SHEET NO.
R-2707E	UC-13/RDY-11
DESIGNED BY: BCH	
DRAWN BY:	
CHECKED BY:	
APPROVED BY:	
REVISED:	3/14/2023
NORTH CAROLINA DEPARTMENT OF TRANSPORTATION UTILITIES ENGINEERING SEC. PHONE: (919) 707-6690 FAX: (919) 250-4151 UTILITY CONSTRUCTION PLANS ONLY	

UTILITY CONSTRUCTION

DOCUMENT NOT CONSIDERED FINAL
UNLESS ALL SIGNATURES COMPLETED



MATCHLINE SHEET UC-12 / RDY-10

MATCHLINE -I-
STA 970 + 00.00 SEE SHEET 12

The estimated quantity of "Ductile Iron Water Pipe Fittings" on this plan sheet is 500 pounds. The actual quantity and type of fittings will vary based on field conditions.

3/14/2023 3:00:13 PM C:\Users\BCH\OneDrive\Documents\Projects\2707E_Ut_(rdy_sht11)_UC\utl_const_sht113_psh.dgn