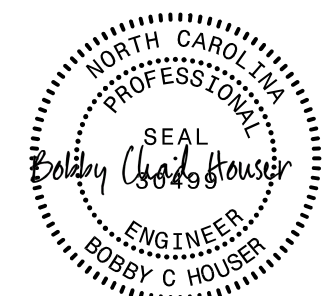


5/14/99

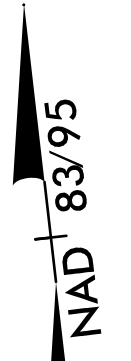
The estimated quantity of "Ductile Iron Water Pipe Fittings" on this plan sheet is 1000 pounds. The actual quantity and type of fittings will vary based on field conditions.

The estimated quantity of "Water Service Line" on this plan sheet is 200 linear feet. The actual quantity will vary based on field conditions and will be determined during construction.

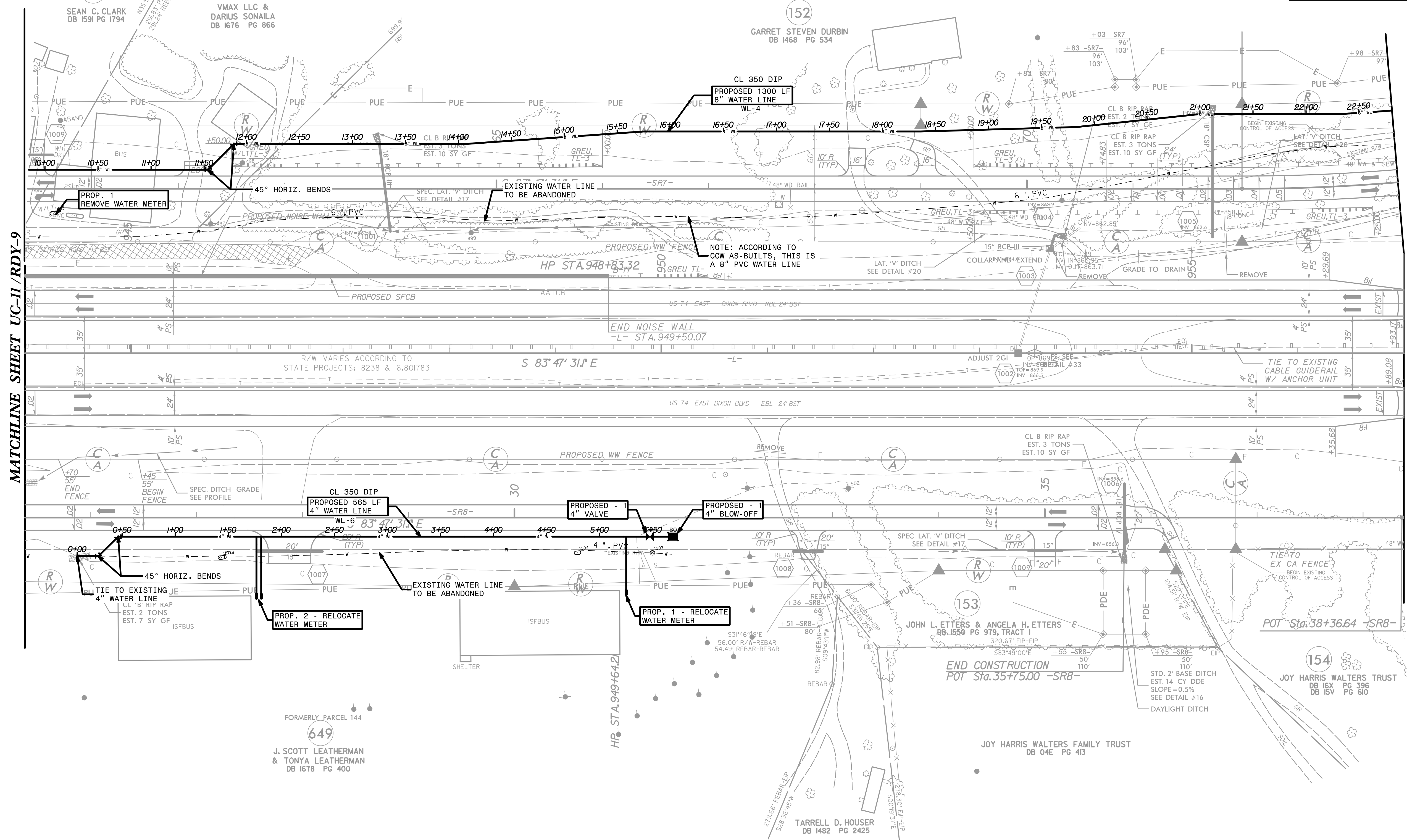
PROJECT REFERENCE NO.	SHEET NO.
R-2707E	UC-12/RDY-10
DESIGNED BY: BCH	
DRAWN BY:	
CHECKED BY:	
APPROVED BY:	
REVISED:	3/14/2023
NORTH CAROLINA DEPARTMENT OF TRANSPORTATION	UTILITY CONSTRUCTION PLANS ONLY
UTILITIES ENGINEERING SEC. PHONE: (919) 707-6690 FAX: (919) 250-4151	

UTILITY CONSTRUCTION

DOCUMENT NOT CONSIDERED FINAL UNLESS ALL SIGNATURES COMPLETED



GARRET STEVEN DURBIN
DB 1468 PG 534



MATCHLINE SHEET UC-11/RDY-9

MATCHLINE SHEET UC-13/RDY-11

3/14/2023
C:\Users\BCH\Documents\Projects\RDY\RDY-10\UC\UC-12\RDY-10.dgn
BCH