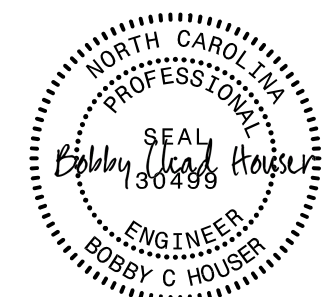
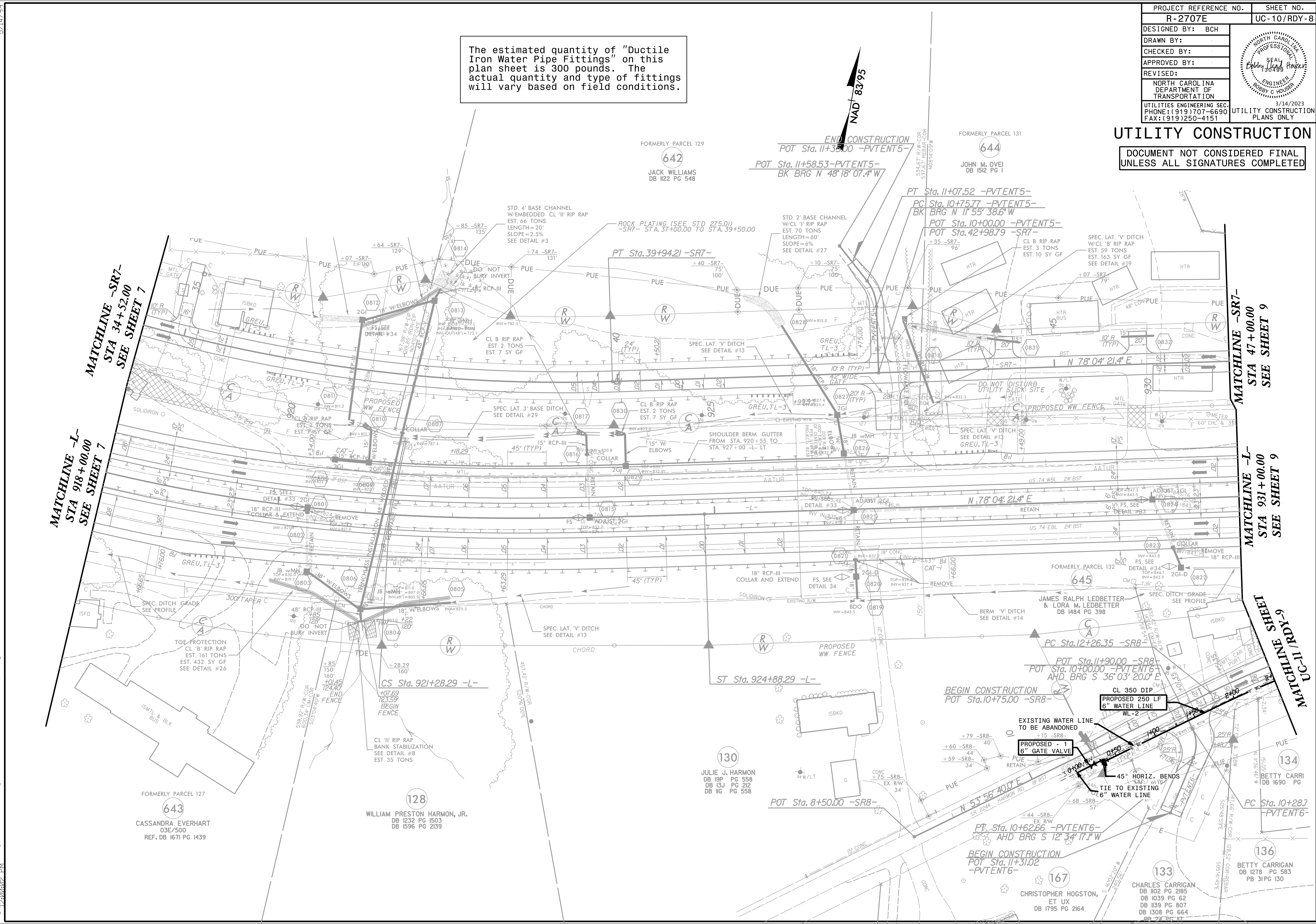


PROJECT REFERENCE NO.	SHEET NO.
R-2707E	UC-10/RDY-8
DESIGNED BY: BCH	
DRAWN BY:	
CHECKED BY:	
APPROVED BY:	
REVISED:	3/14/2023
NORTH CAROLINA DEPARTMENT OF TRANSPORTATION	
UTILITIES ENGINEERING SEC. PHONE: (919) 707-6690 FAX: (919) 250-4151	UTILITY CONSTRUCTION PLANS ONLY

# UTILITY CONSTRUCTION

DOCUMENT NOT CONSIDERED FINAL UNLESS ALL SIGNATURES COMPLETED

The estimated quantity of "Ductile Iron Water Pipe Fittings" on this plan sheet is 300 pounds. The actual quantity and type of fittings will vary based on field conditions.



3/14/2023 Pro:\NP2707E\_Ut\_(r.dj\_sht8)\_UC(ut)\_const\_Sht101.psh.dgn