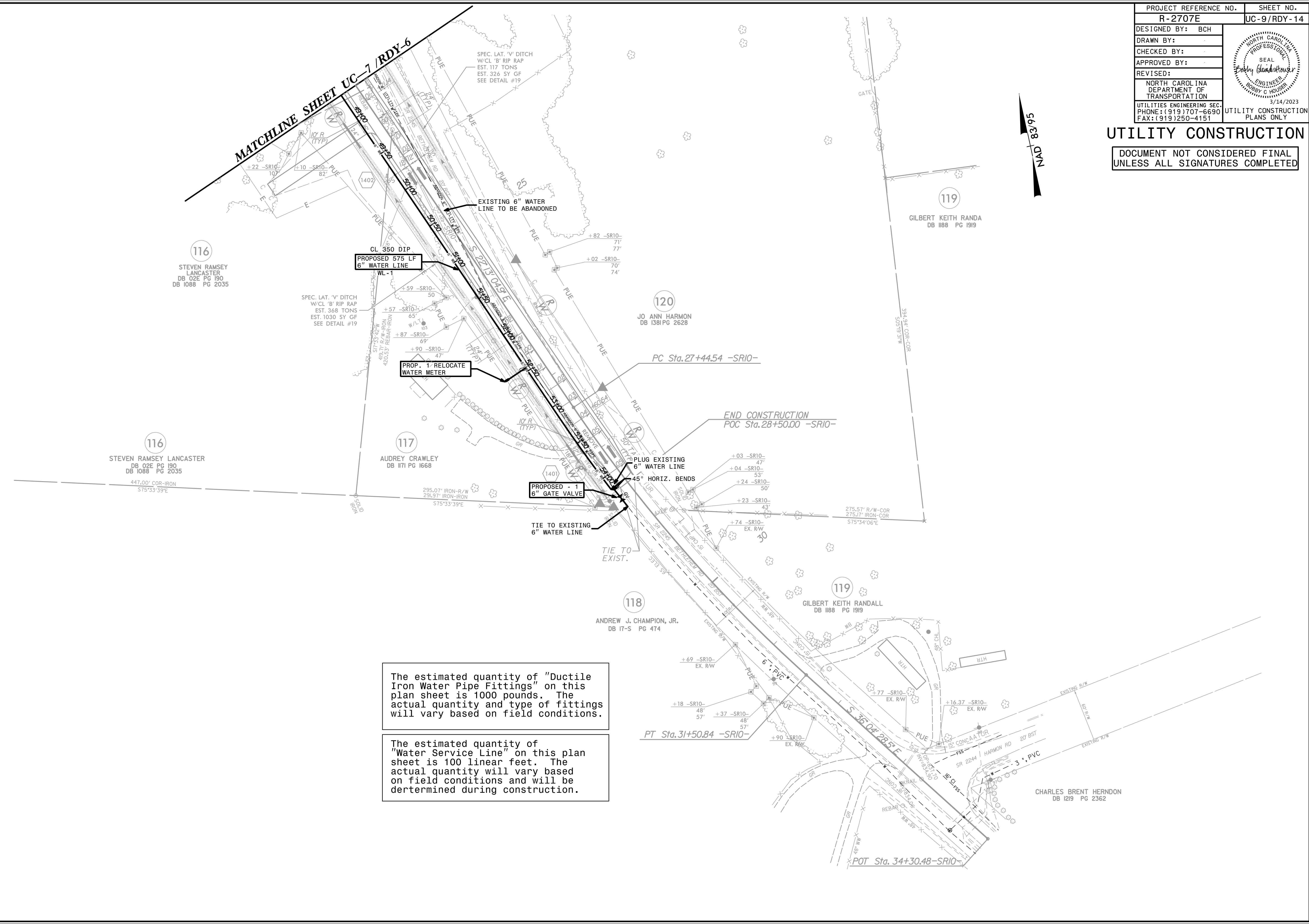


5/14/23

PROJECT REFERENCE NO.	SHEET NO.
R-2707E	UC-9/RDY-14
DESIGNED BY: BCH	
DRAWN BY:	
CHECKED BY:	
APPROVED BY:	
REVISED:	
NORTH CAROLINA DEPARTMENT OF TRANSPORTATION	3/14/2023
UTILITIES ENGINEERING SEC. PHONE: (919) 707-6690 FAX: (919) 250-4151	UTILITY CONSTRUCTION PLANS ONLY

UTILITY CONSTRUCTION

DOCUMENT NOT CONSIDERED FINAL
UNLESS ALL SIGNATURES COMPLETED



The estimated quantity of "Ductile Iron Water Pipe Fittings" on this plan sheet is 1000 pounds. The actual quantity and type of fittings will vary based on field conditions.

The estimated quantity of "Water Service Line" on this plan sheet is 100 linear feet. The actual quantity will vary based on field conditions and will be determined during construction.

3/14/2023 3:14:58 PM C:\Users\BCH\OneDrive\Documents\Projects\RDY\UC\UC(utl)_const_Sht(9).psd.dgn