


5/14/23

PROJECT REFERENCE NO.	SHEET NO.
R-2707E	UC-7/RDY-6
DESIGNED BY: BCH	
DRAWN BY:	
CHECKED BY:	
APPROVED BY:	
REVISED:	NORTH CAROLINA DEPARTMENT OF TRANSPORTATION
UTILITIES ENGINEERING SEC. PHONE: (919) 707-6690 FAX: (919) 250-4151	UTILITY CONSTRUCTION PLANS ONLY

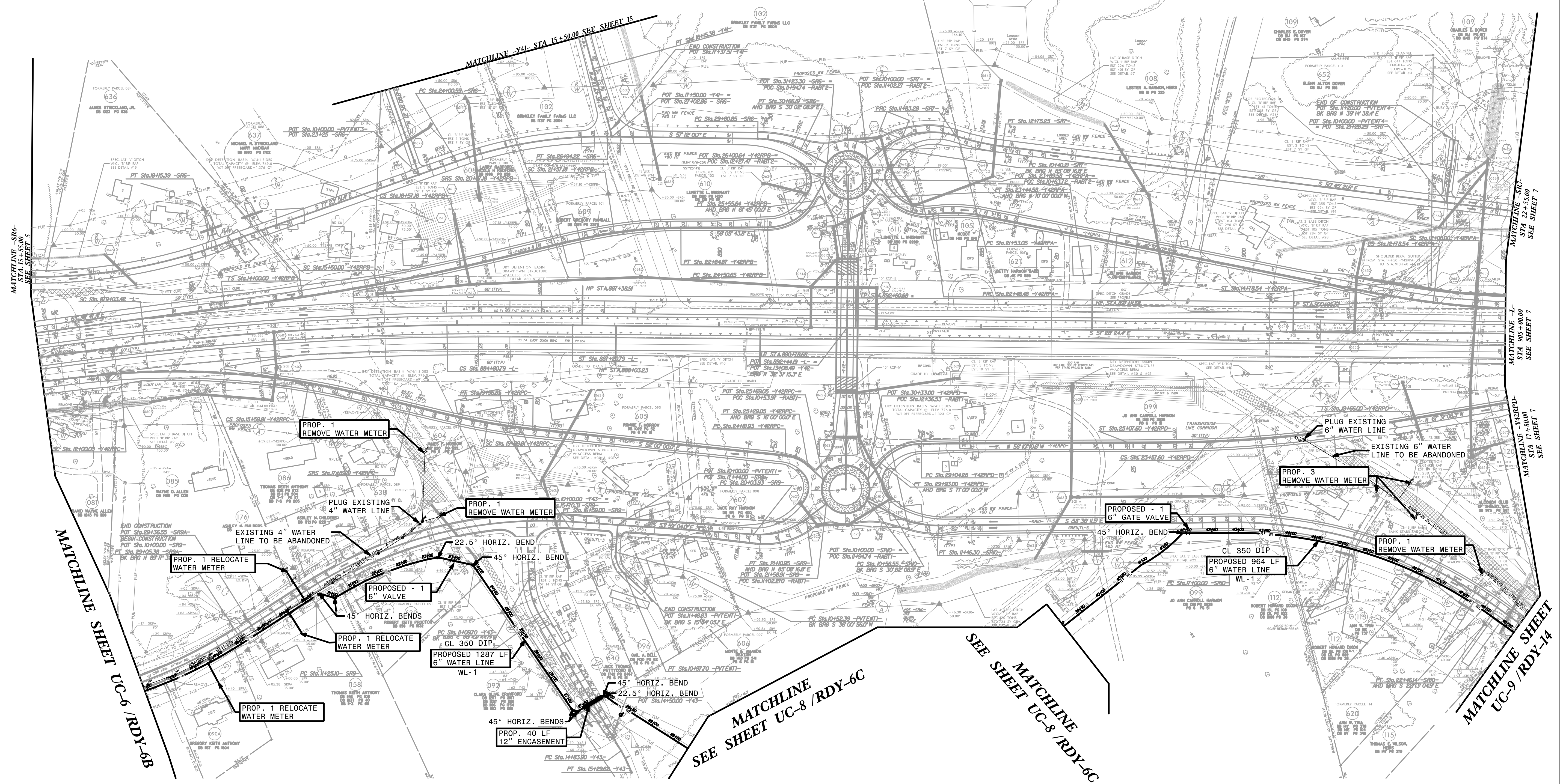
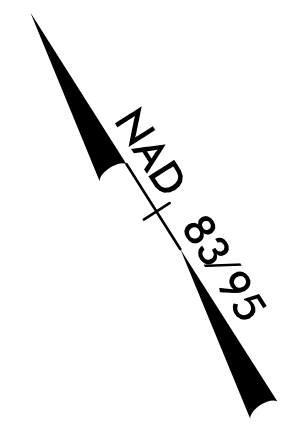
3/14/2023

### UTILITY CONSTRUCTION

DOCUMENT NOT CONSIDERED FINAL  
UNLESS ALL SIGNATURES COMPLETED

The estimated quantity of "Ductile Iron Water Pipe Fittings" on this plan sheet is 1500 pounds. The actual quantity and type of fittings will vary based on field conditions.

The estimated quantity of "Water Service Line" on this plan sheet is 150 linear feet. The actual quantity will vary based on field conditions and will be determined during construction.



MATCHLINE -SRG- STA 15+55.00 SEE SHEET 5

MATCHLINE SHEET UC-6 / RDY-6B

MATCHLINE SEE SHEET UC-8 / RDY-6C

MATCHLINE SEE SHEET UC-8 / RDY-6C

MATCHLINE SHEET UC-9 / RDY-14

MATCHLINE -SRG- STA 17+55.00 SEE SHEET 7

MATCHLINE -SRG- STA 905+00.00 SEE SHEET 7

MATCHLINE -SRG- STA 17+80.00 SEE SHEET 7

3/14/2023 Pro:\NR2707E\_Ut\_rdy\_sht61\_UC[ut].const\_sht71\_psh.dgn