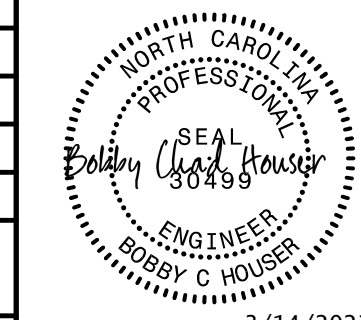
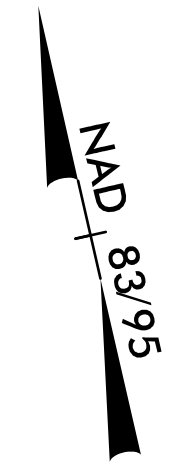


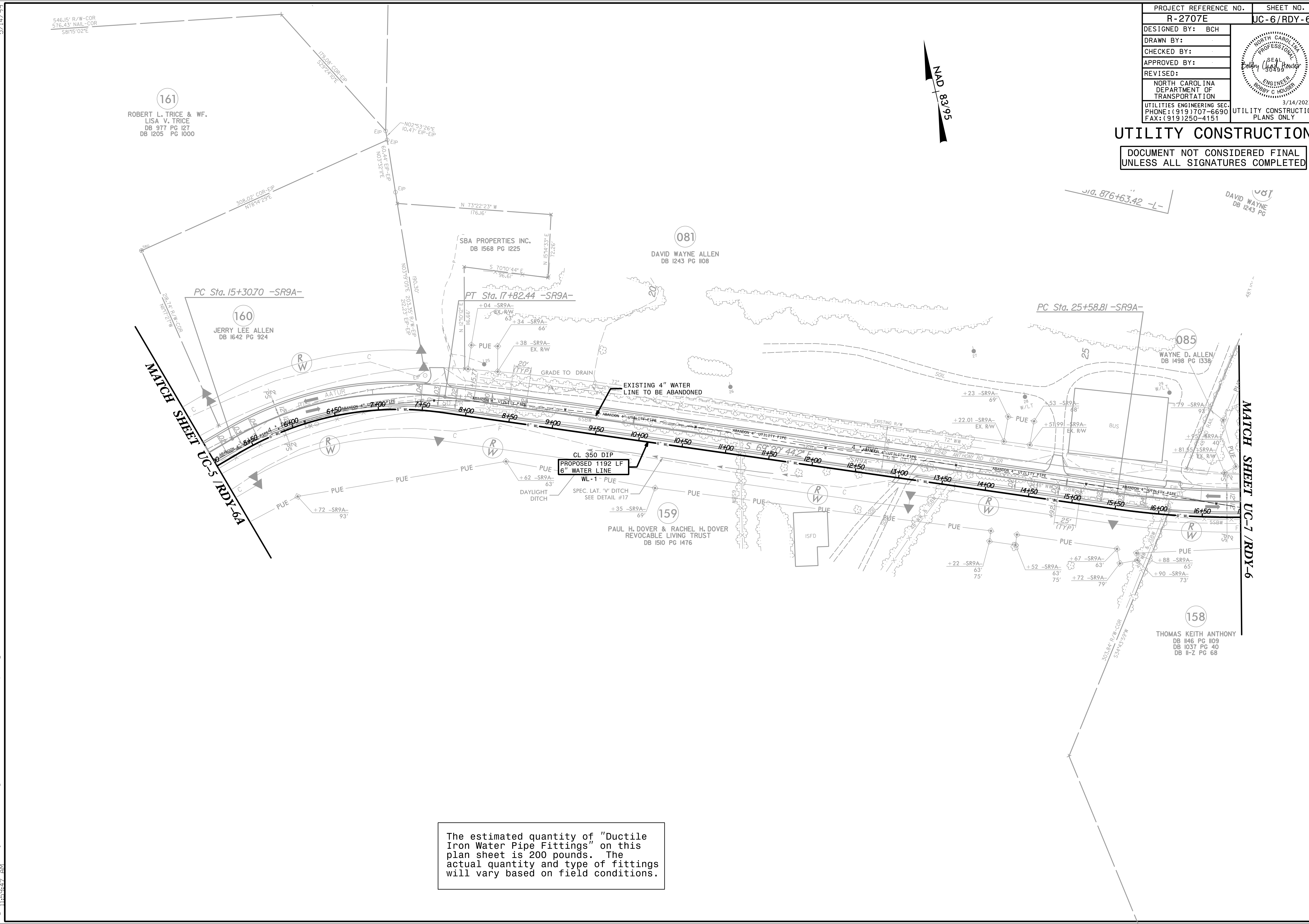
PROJECT REFERENCE NO.	SHEET NO.
R-2707E	JC-6/RDY-6B
DESIGNED BY: BCH	
DRAWN BY:	
CHECKED BY:	
APPROVED BY:	
REVISED:	3/14/2023
NORTH CAROLINA DEPARTMENT OF TRANSPORTATION	UTILITY CONSTRUCTION PLANS ONLY
UTILITIES ENGINEERING SEC. PHONE: (919) 707-6690 FAX: (919) 250-4151	

UTILITY CONSTRUCTION

DOCUMENT NOT CONSIDERED FINAL
UNLESS ALL SIGNATURES COMPLETED



DAVID WAYNE
DB 1243 PG



The estimated quantity of "Ductile Iron Water Pipe Fittings" on this plan sheet is 200 pounds. The actual quantity and type of fittings will vary based on field conditions.

3/14/2023 11:56:49 AM
 C:\Users\BCH\OneDrive\Documents\Projects\RDY\RDY-6A\RDY-6A.dgn
 3/14/2023 11:56:49 AM
 C:\Users\BCH\OneDrive\Documents\Projects\RDY\RDY-6A\RDY-6A.dgn