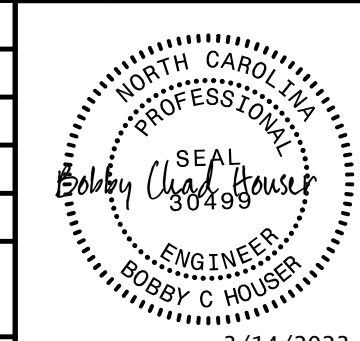
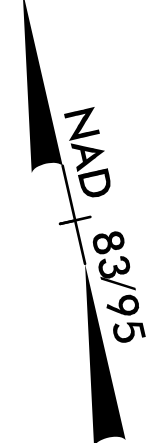


5/14/99

PROJECT REFERENCE NO.	SHEET NO.
R-2707E	JC-5/RDY-6A
DESIGNED BY: BCH	
DRAWN BY:	
CHECKED BY:	
APPROVED BY:	
REVISED:	
NORTH CAROLINA DEPARTMENT OF TRANSPORTATION	
UTILITIES ENGINEERING SEC. PHONE: (919) 707-6690 FAX: (919) 250-4151	
UTILITY CONSTRUCTION PLANS ONLY	

# UTILITY CONSTRUCTION

DOCUMENT NOT CONSIDERED FINAL UNLESS ALL SIGNATURES COMPLETED



RONNIE BRADY CHEEK  
CATHY CORNWELL CHEEK  
DB 1436 PG 2438,  
TRACT I

079  
RONNIE BRADY CHEEK  
CATHY CORNWELL CHEEK  
DB 1444 PG 2041  
DB 1436 PG 2438

161  
ROBERT L. TRICE & WF.  
LISA V. TRICE  
DB 977 PG 127  
DB 1205 PG 1000

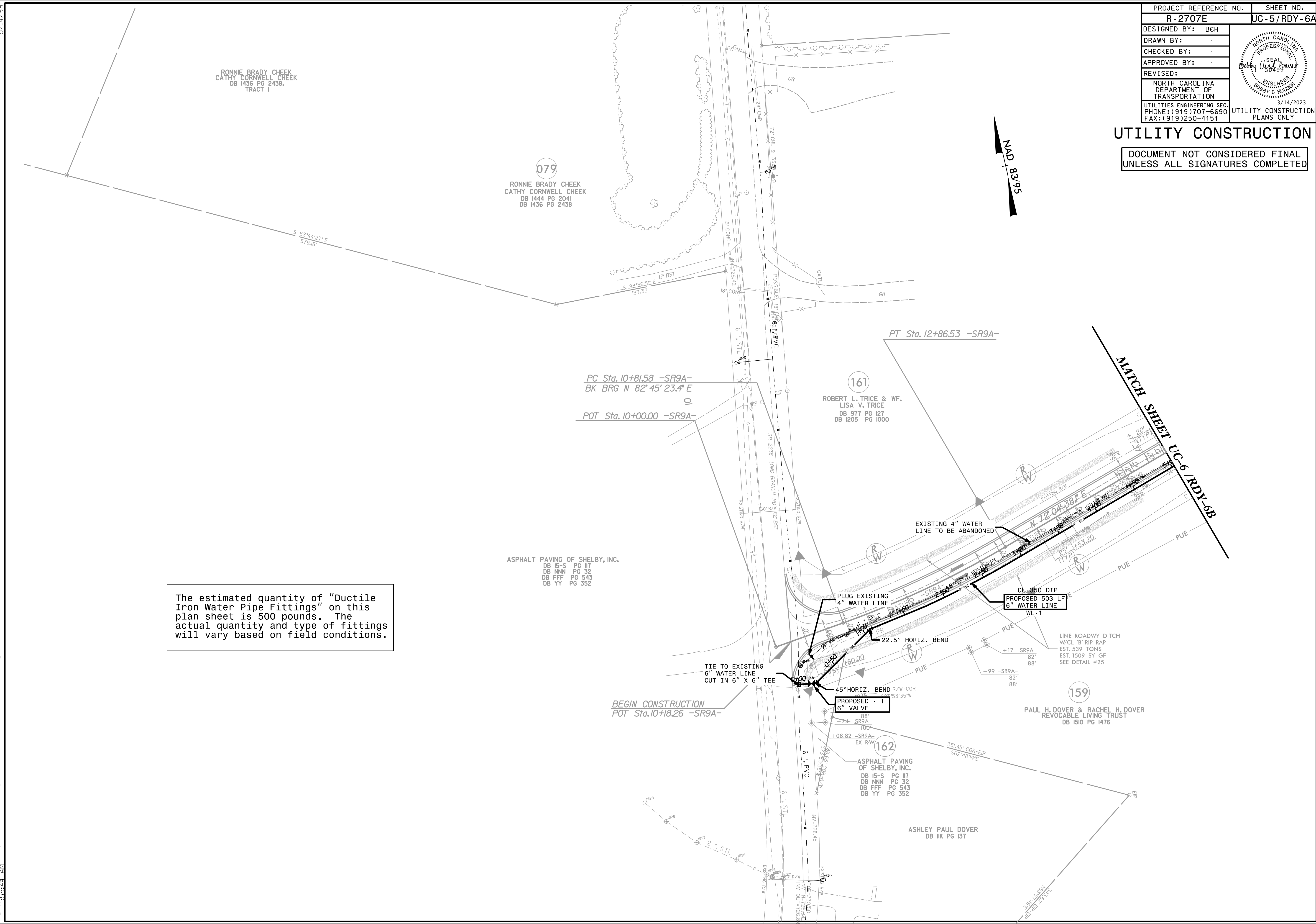
ASPHALT PAVING OF SHELBY, INC.  
DB 15-S PG 117  
DB NNN PG 32  
DB FFF PG 543  
DB YY PG 352

162  
ASPHALT PAVING  
OF SHELBY, INC.  
DB 15-S PG 117  
DB NNN PG 32  
DB FFF PG 543  
DB YY PG 352

159  
PAUL H. DOVER & RACHEL H. DOVER  
REVOCABLE LIVING TRUST  
DB 1510 PG 1476

ASHLEY PAUL DOVER  
DB 11K PG 137

The estimated quantity of "Ductile Iron Water Pipe Fittings" on this plan sheet is 500 pounds. The actual quantity and type of fittings will vary based on field conditions.



3/14/2023 Proj: R2707E-Ut.-rdy.sht6A).UC(ut).const.Sht6).psh.dgn  
 11:56:43 AM  
 User: Enginr\psh