

NOTES:

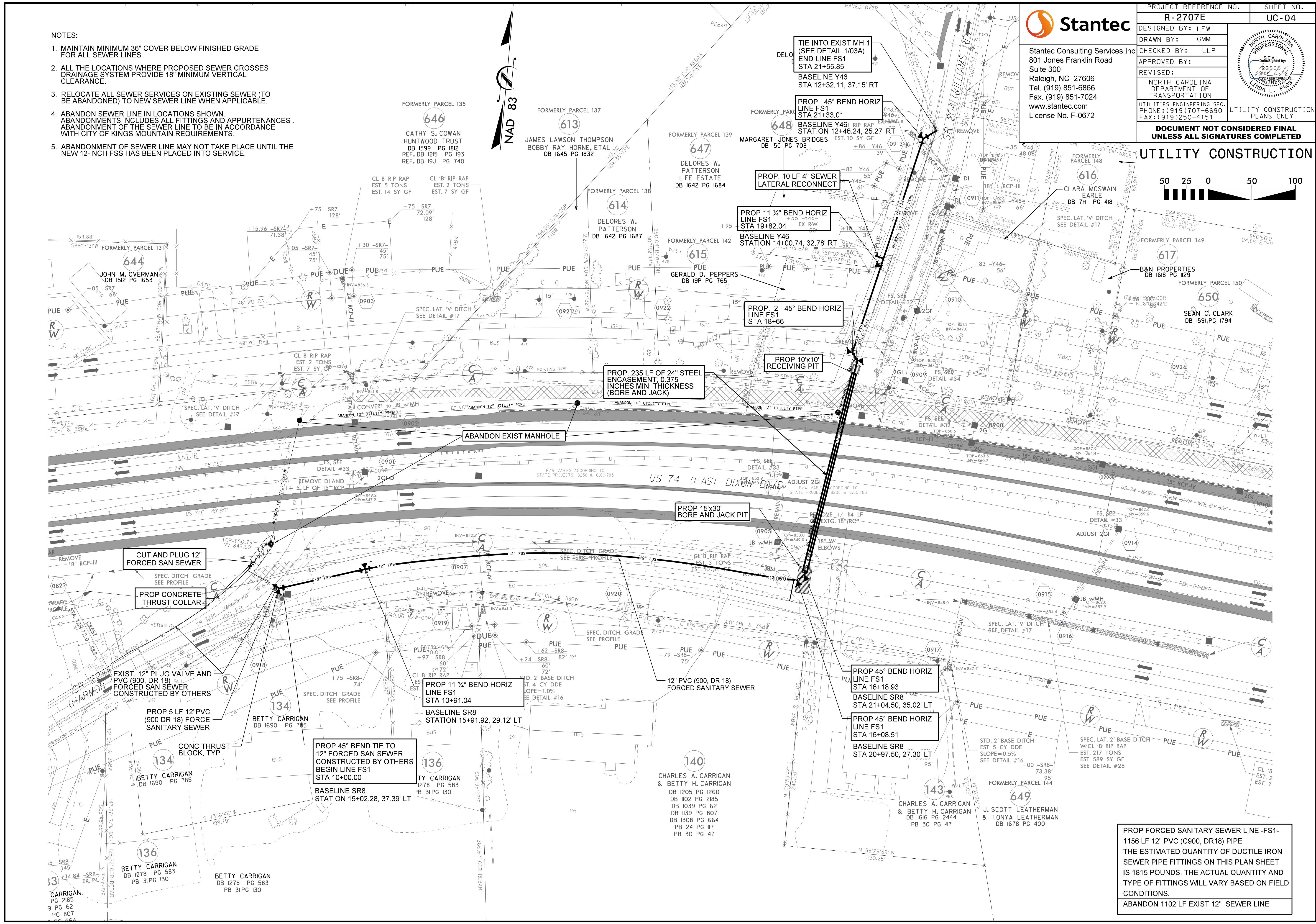
1. MAINTAIN MINIMUM 36" COVER BELOW FINISHED GRADE FOR ALL SEWER LINES.
2. ALL THE LOCATIONS WHERE PROPOSED SEWER CROSSES DRAINAGE SYSTEM PROVIDE 18" MINIMUM VERTICAL CLEARANCE.
3. RELOCATE ALL SEWER SERVICES ON EXISTING SEWER (TO BE ABANDONED) TO NEW SEWER LINE WHEN APPLICABLE.
4. ABANDON SEWER LINE IN LOCATIONS SHOWN. ABANDONMENTS INCLUDES ALL FITTINGS AND APPURTENANCES. ABANDONMENT OF THE SEWER LINE TO BE IN ACCORDANCE WITH CITY OF KINGS MOUNTAIN REQUIREMENTS.
5. ABANDONMENT OF SEWER LINE MAY NOT TAKE PLACE UNTIL THE NEW 12-INCH FSS HAS BEEN PLACED INTO SERVICE.



Stantec Consulting Services Inc.
801 Jones Franklin Road
Suite 300
Raleigh, NC 27606
Tel. (919) 851-6866
Fax. (919) 851-7024
www.stantec.com
License No. F-0672

PROJECT REFERENCE NO. R-2707E	SHEET NO. UC-04
DESIGNED BY: LEW	
DRAWN BY: GMM	
CHECKED BY: LLP	
APPROVED BY:	NORTH CAROLINA DEPARTMENT OF TRANSPORTATION UTILITY CONSTRUCTION PLANS ONLY
REVISED:	
DOCUMENT NOT CONSIDERED FINAL UNLESS ALL SIGNATURES COMPLETED	

UTILITY CONSTRUCTION



PROP FORCED SANITARY SEWER LINE -FS1-
1156 LF 12" PVC (C900, DR18) PIPE
THE ESTIMATED QUANTITY OF DUCTILE IRON
SEWER PIPE FITTINGS ON THIS PLAN SHEET
IS 1815 POUNDS. THE ACTUAL QUANTITY AND
TYPE OF FITTINGS WILL VARY BASED ON FIELD
CONDITIONS.
ABANDON 1102 LF EXIST 12" SEWER LINE