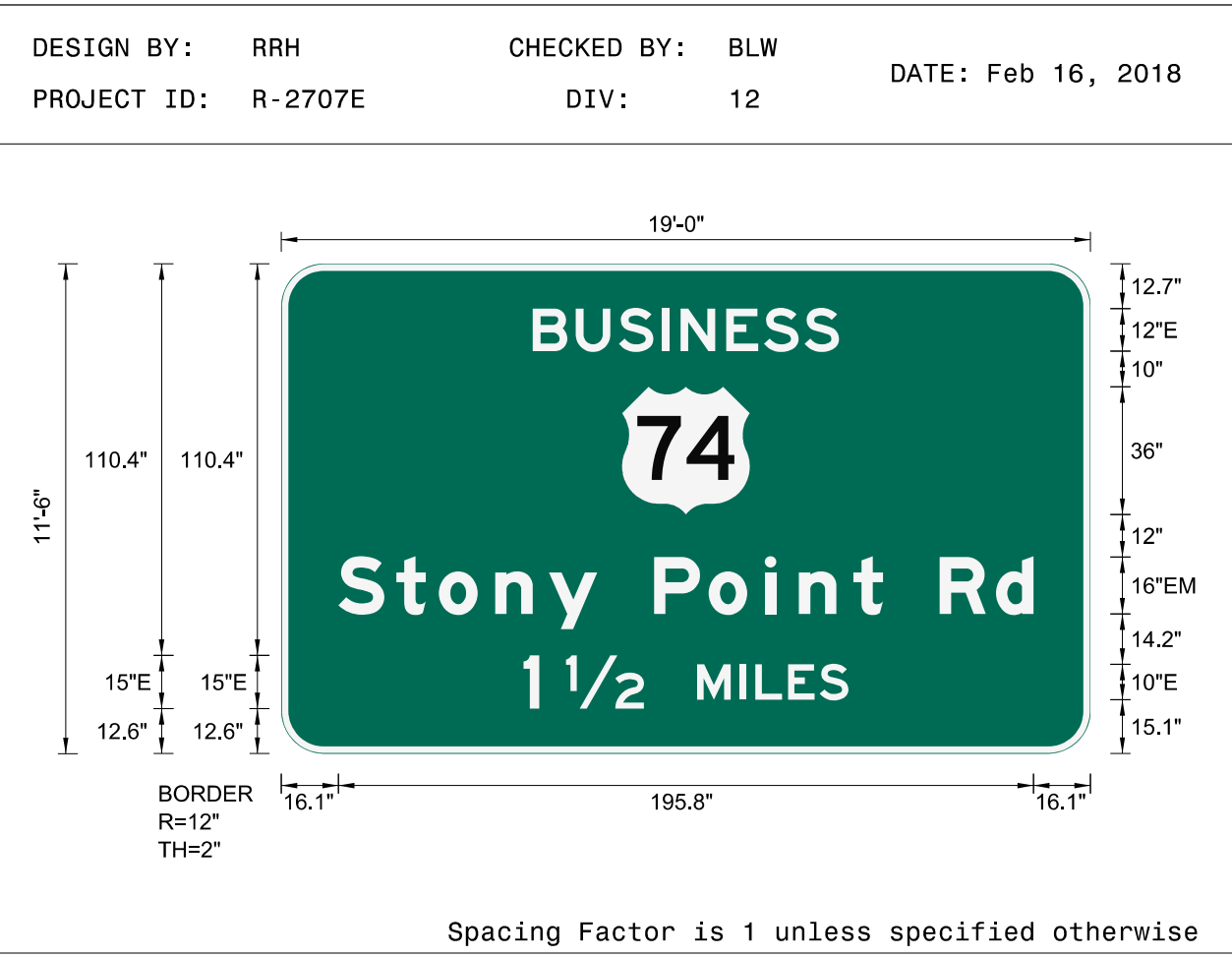


SIGN NUMBER: 111B  
 TYPE: A  
 QUANTITY: 1  
 SIGN WIDTH: 228"  
 HEIGHT: 138"  
 TOTAL AREA: 218.5 Sq.Ft.  
 BORDER TYPE: FLUSH  
 RADII: 12"  
 WIDTH: 2"  
 RECESS: 0"  
 NO. Z BARS: 3  
 LENGTH: 220.0

BACKG COLOR: Green  
 COPY COLOR: White

SYMBOL	X	Y	WID	HT
M1_4	96	67.4	36	36

MAT'L: 0.125" (3.2MM) ALUMINUM



USE NOTES

- Legend and border (except those that are colored black) shall be direct applied Grade C sheeting.
- Background shall be Grade C reflective sheeting.
- Shields; A, B, and C type arrows shall be on 0.032" (0.8mm) aluminum and demountable.

LETTER POSITIONS

Letter spacings are to start of next letter

Letter spacings are to start of next letter															Series/Size Text Length	
B	U	S	I	N	E	S	S								E 2000	
70.9	12.1	12.1	12.1	5.3	12.8	10.7	11.4	9.7	70.9						86.3	
S t o n y P o i n t R d															EM 2000	
16.1	16.3	12	15.8	15.2	13.6	16	15.4	15.8	9.6	15.4	8.3	16	15.8	10.6	16.1	195.8
1 M I L E S															E 2000	
68.2	4.5	7.5	22	15	12	4.4	9.2	8.9	8.1	68.2					91.6	

SIGN NUMBER: 112B  
 TYPE: A  
 QUANTITY: 1  
 SIGN WIDTH: 228"  
 HEIGHT: 138"  
 TOTAL AREA: 218.5 Sq.Ft.  
 BORDER TYPE: FLUSH  
 RADII: 12"  
 WIDTH: 2"  
 RECESS: 0"  
 NO. Z BARS: 3  
 LENGTH: 220.0

BACKG COLOR: Green  
 COPY COLOR: White

SYMBOL	X	Y	WID	HT
M1_4	96	67.5	36	36

MAT'L: 0.125" (3.2MM) ALUMINUM



USE NOTES

- Legend and border (except those that are colored black) shall be direct applied Grade C sheeting.
- Background shall be Grade C reflective sheeting.
- Shields; A, B, and C type arrows shall be on 0.032" (0.8mm) aluminum and demountable.

LETTER POSITIONS

Letter spacings are to start of next letter

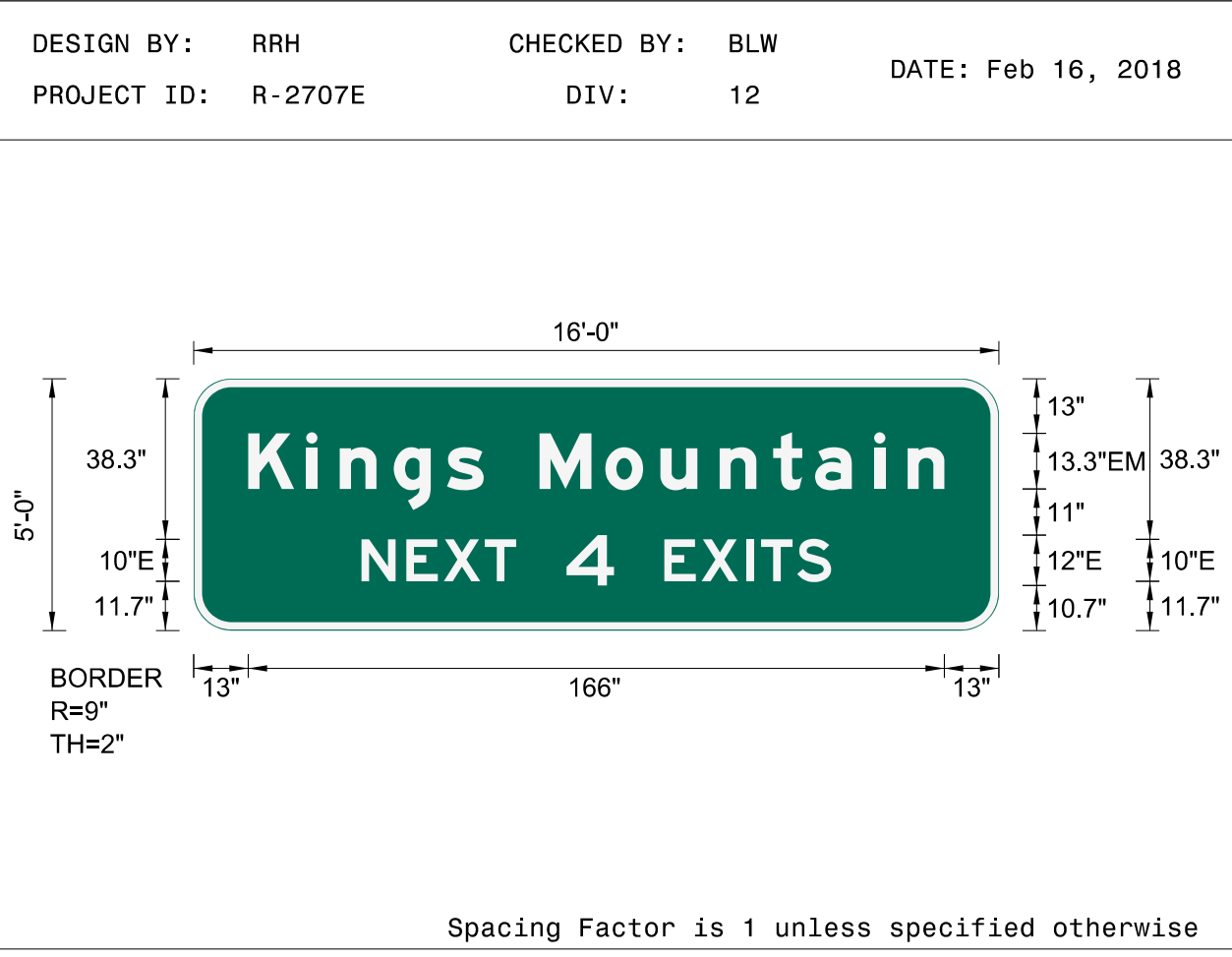
Letter spacings are to start of next letter															Series/Size Text Length	
B	U	S	I	N	E	S	S								E 2000	
70.9	12.1	12.1	12.1	5.3	12.8	10.7	11.4	9.7	70.9						86.3	
S t o n y P o i n t R d															EM 2000	
16.1	16.3	12	15.8	15.2	13.6	16	15.4	15.8	9.6	15.4	8.3	16	15.8	10.6	16.1	195.8
1 M I L E															E 2000	
87.7	4.5	15	12	4.4	9.2	7.5	87.7								52.6	

SIGN NUMBER: 113  
 TYPE: A  
 QUANTITY: 1  
 SIGN WIDTH: 192"  
 HEIGHT: 80"  
 TOTAL AREA: 80.0 Sq.Ft.  
 BORDER TYPE: FLUSH  
 RADII: 9"  
 WIDTH: 2"  
 RECESS: 0"  
 NO. Z BARS: 2  
 LENGTH: 184.0

BACKG COLOR: Green  
 COPY COLOR: White

SYMBOL	X	Y	WID	HT

MAT'L: 0.125" (3.2MM) ALUMINUM



USE NOTES

- Legend and border (except those that are colored black) shall be direct applied Grade C sheeting.
- Background shall be Grade C reflective sheeting.

LETTER POSITIONS

Letter spacings are to start of next letter

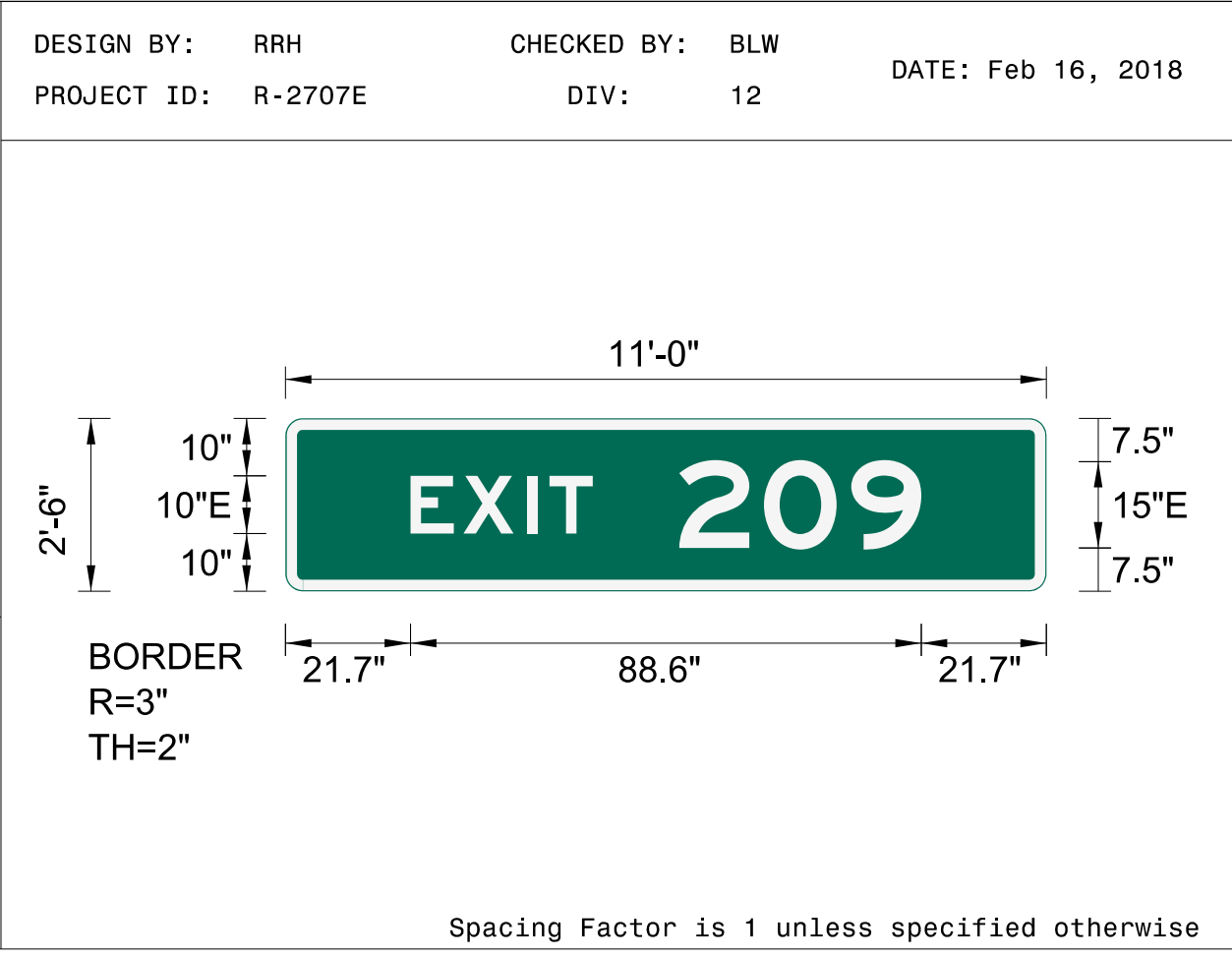
Letter spacings are to start of next letter															Series/Size Text Length	
K	i	n	g	s	M	o	u	n	t	a	i	n			EM 2000	
13	13.8	8	12.9	12.6	8.8	13.3	15.7	13.2	14.1	12.8	10	14.1	8	8.8	13	166
N E X T 4 E X I T S															E 2000	
40	10.7	8.9	9.8	7.5	12	11.3	12	8.9	10.7	3.5	8.6	8.1	40			112

SIGN NUMBER: 114A,116A  
 TYPE: B  
 QUANTITY: 2  
 SIGN WIDTH: 132"  
 HEIGHT: 30"  
 TOTAL AREA: 27.5 Sq.Ft.  
 BORDER TYPE: FLUSH  
 RADII: 3"  
 WIDTH: 2"  
 RECESS: 0"  
 NO. Z BARS: 2  
 LENGTH: 124.0

BACKG COLOR: Green  
 COPY COLOR: White

SYMBOL	X	Y	WID	HT

MAT'L: 0.125" (3.2MM) ALUMINUM



USE NOTES

- Legend and border (except those that are colored black) shall be direct applied Grade C sheeting.
- Background shall be Grade C reflective sheeting.

LETTER POSITIONS

Letter spacings are to start of next letter

Letter spacings are to start of next letter							Series/Size Text Length
E	X	I	T				E 2000
21.7	9.2	11.1	3.8	7.5	78.7		31.6
2 0 9							E 2000
68.3	14.7	15.2	12.2	21.7			42

TIP NO. R-2707E      SHEET NO. SIGN-4E

APPROVED: *Betsy L. Watson*

DATE: 4/27/2023

SEAL

**DOCUMENT NOT CONSIDERED FINAL  
UNLESS ALL SIGNATURES COMPLETED**

\$\$\$\$\$SYTIME\$\$\$\$\$  
 \$\$\$\$\$\$DGN\$\$\$\$\$  
 \$\$\$\$\$\$USERNAME\$\$\$\$\$

GROUND MOUNTED TYPE 'A' & 'B' SIGNS