

PROJECT REFERENCE NO. <i>R-2707E</i>	SHEET NO. <i>EC-30/CONST.10</i>
RW SHEET NO.	
ROADWAY DESIGN ENGINEER	HYDRAULICS ENGINEER

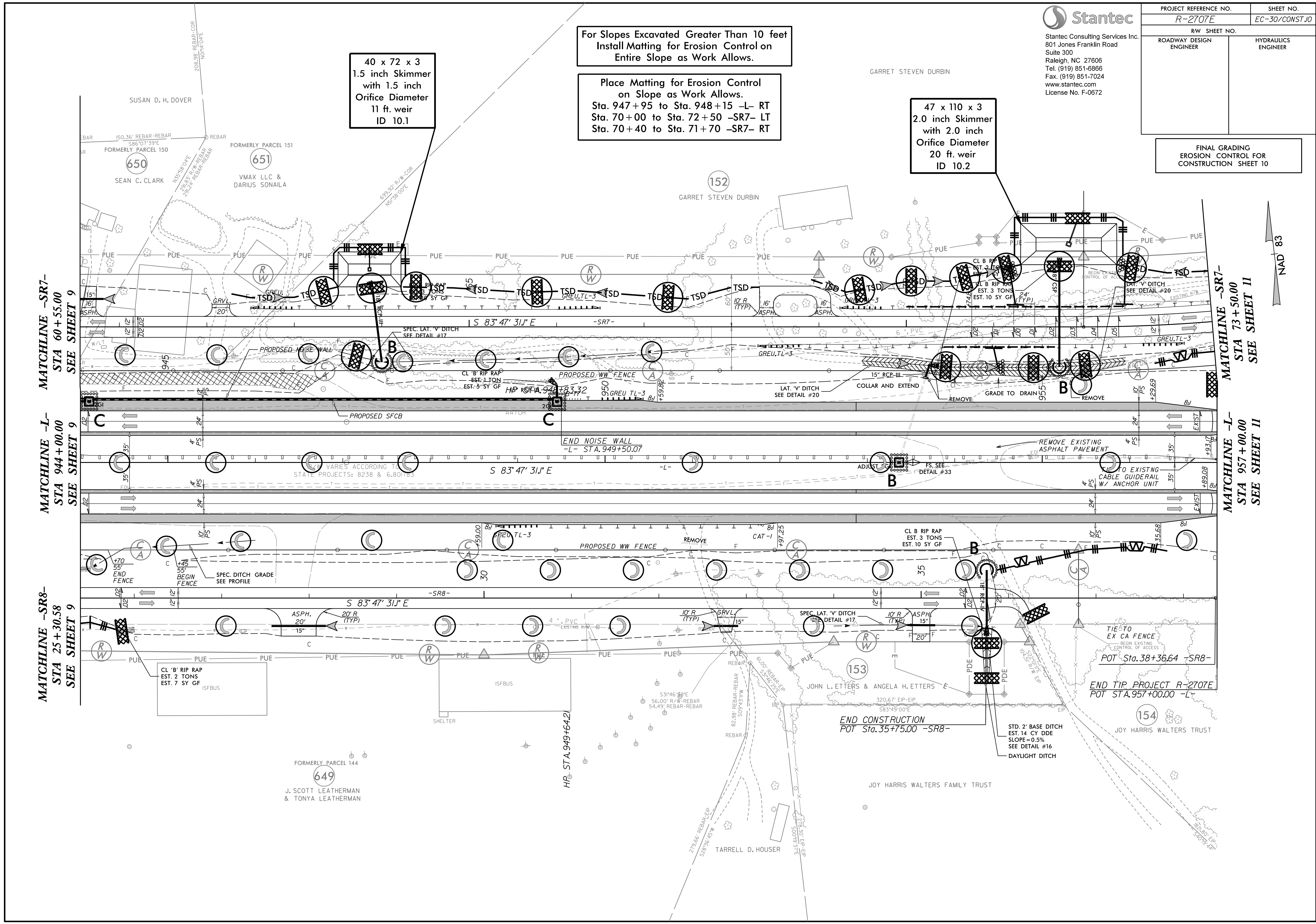
For Slopes Excavated Greater Than 10 feet
Install Matting for Erosion Control on
Entire Slope as Work Allows.

Place Matting for Erosion Control
on Slope as Work Allows.
Sta. 947+95 to Sta. 948+15 -L- RT
Sta. 70+00 to Sta. 72+50 -SR7- LT
Sta. 70+40 to Sta. 71+70 -SR7- RT

47 x 110 x 3
2.0 inch Skimmer
with 2.0 inch
Orifice Diameter
20 ft. weir
ID 10.2

40 x 72 x 3
1.5 inch Skimmer
with 1.5 inch
Orifice Diameter
11 ft. weir
ID 10.1

FINAL GRADING
EROSION CONTROL FOR
CONSTRUCTION SHEET 10



MATCHLINE -SR7-
STA 60+55.00
SEE SHEET 9

MATCHLINE -L-
STA 944+00.00
SEE SHEET 9

MATCHLINE -SR8-
STA 25+30.58
SEE SHEET 9

MATCHLINE -SR7-
STA 73+50.00
SEE SHEET 11

MATCHLINE -L-
STA 957+00.00
SEE SHEET 11



FORMERLY PARCEL 144
649
J. SCOTT LEATHERMAN
& TONYA LEATHERMAN

END CONSTRUCTION
POT Sta. 35+75.00 -SR8-

END TIP PROJECT R-2707E
POT STA. 957+00.00 -L-

POT Sta. 38+36.64 -SR8-