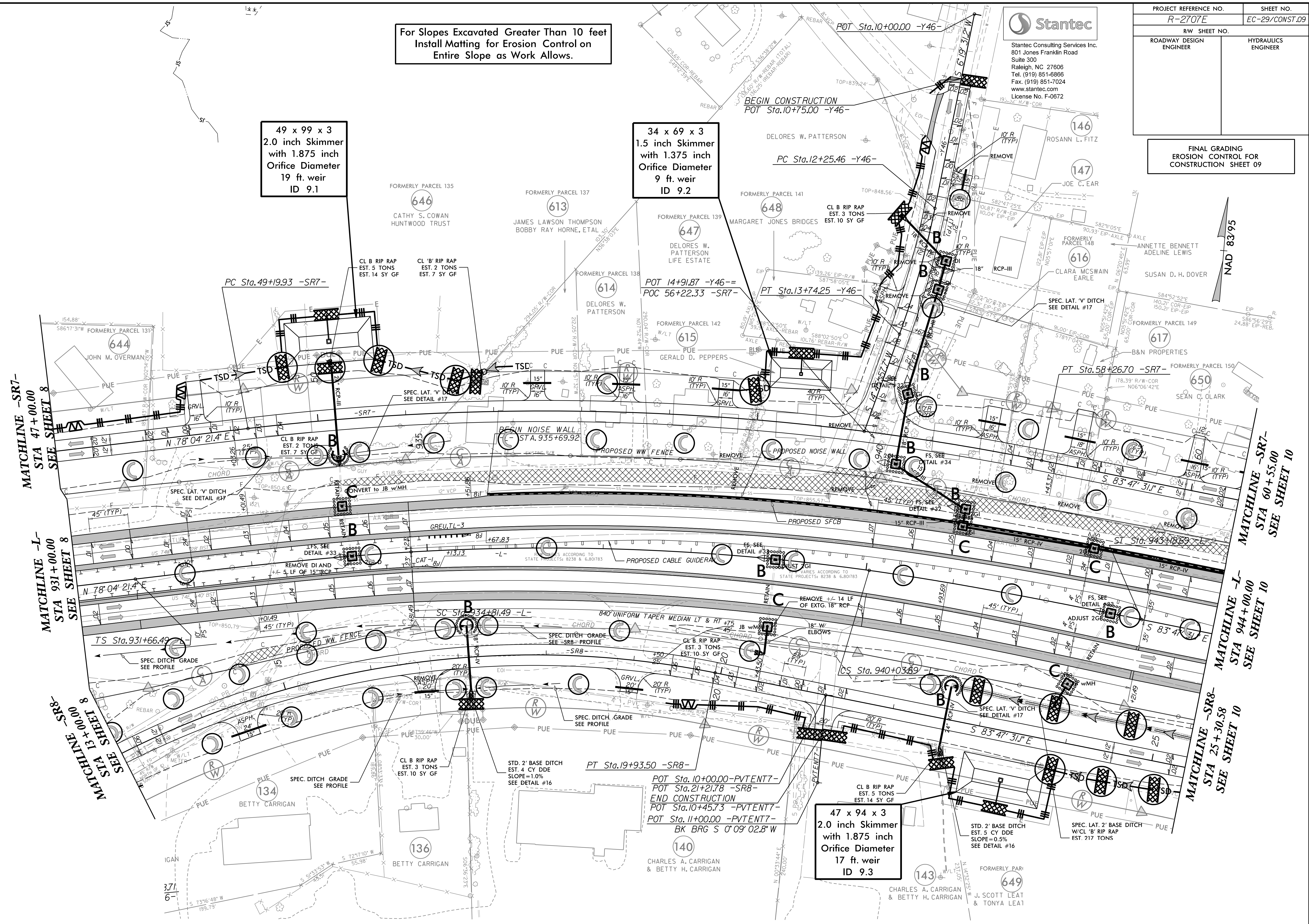


For Slopes Excavated Greater Than 10 feet
Install Matting for Erosion Control on
Entire Slope as Work Allows.

Stantec
Stantec Consulting Services Inc.
801 Jones Franklin Road
Suite 300
Raleigh, NC 27606
Tel. (919) 851-6866
Fax. (919) 851-7024
www.stantec.com
License No. F-0672

PROJECT REFERENCE NO. R-2707E	SHEET NO. EC-29/CONST.09
RW SHEET NO.	
ROADWAY DESIGN ENGINEER	HYDRAULICS ENGINEER

FINAL GRADING
EROSION CONTROL FOR
CONSTRUCTION SHEET 09



49 x 99 x 3
2.0 inch Skimmer
with 1.875 inch
Orifice Diameter
19 ft. weir
ID 9.1

34 x 69 x 3
1.5 inch Skimmer
with 1.375 inch
Orifice Diameter
9 ft. weir
ID 9.2

47 x 94 x 3
2.0 inch Skimmer
with 1.875 inch
Orifice Diameter
17 ft. weir
ID 9.3

POT Sta. 10+00.00 -PVENT7-
POT Sta. 21+21.78 -SR8-
END CONSTRUCTION
POT Sta. 10+45.73 -PVENT7-
POT Sta. 11+00.00 -PVENT7-
BK BRG S 0'09" 02.8" W

MATCHLINE -SR7-
STA 47+00.00
SEE SHEET 8

MATCHLINE -L-
STA 931+00.00
SEE SHEET 8

MATCHLINE -SR8-
STA 13+00.00
SEE SHEET 8

MATCHLINE -SR7-
STA 60+55.00
SEE SHEET 10

MATCHLINE -L-
STA 944+00.00
SEE SHEET 10

MATCHLINE -SR8-
STA 25+30.58
SEE SHEET 10