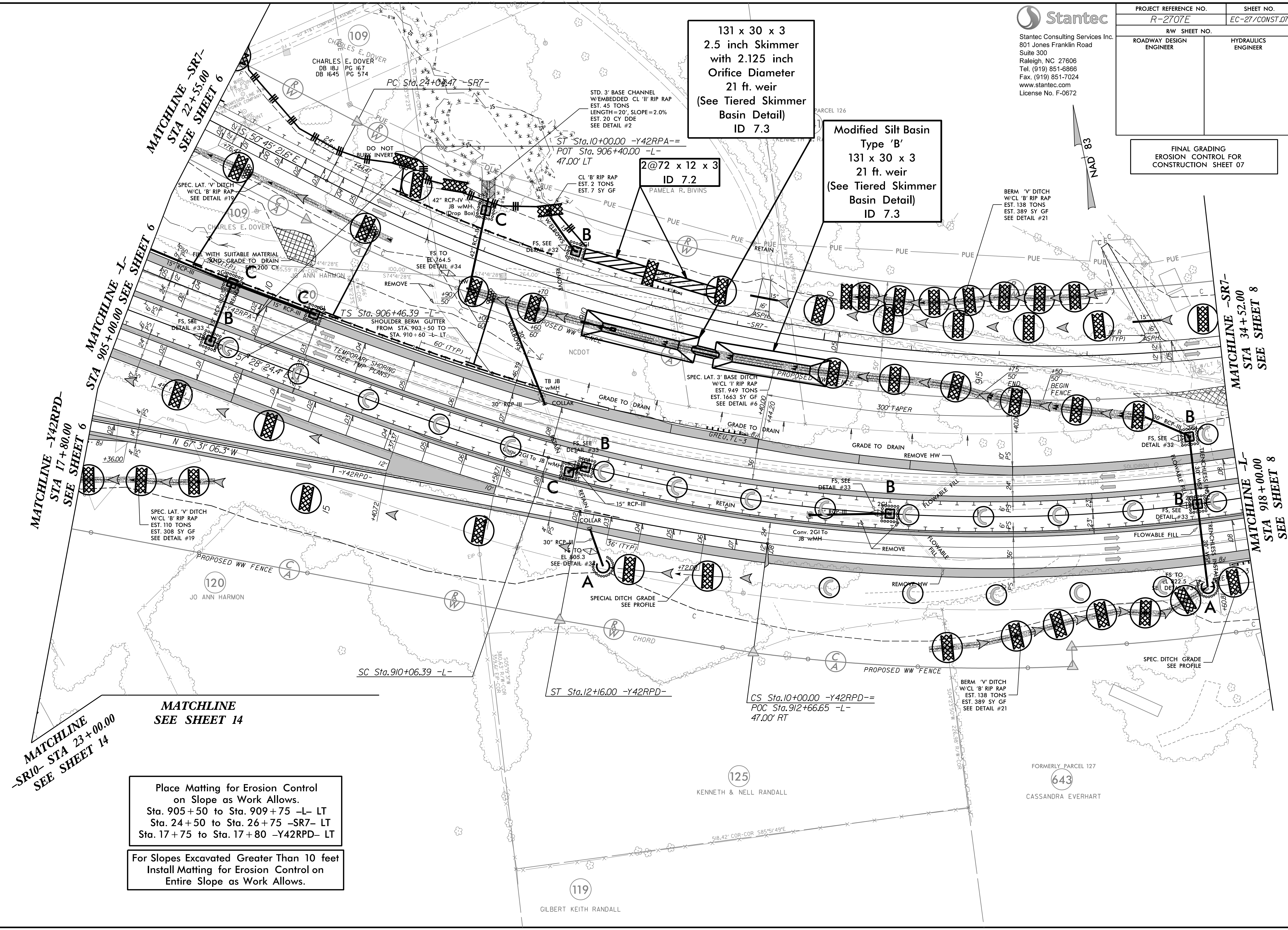


PROJECT REFERENCE NO. R-2707E	SHEET NO. EC-27/CONST.07
ROADWAY DESIGN ENGINEER	HYDRAULICS ENGINEER

FINAL GRADING  
 EROSION CONTROL FOR  
 CONSTRUCTION SHEET 07



131 x 30 x 3  
 2.5 inch Skimmer  
 with 2.125 inch  
 Orifice Diameter  
 21 ft. weir  
 (See Tiered Skimmer  
 Basin Detail)  
 ID 7.3

Modified Silt Basin  
 Type 'B'  
 131 x 30 x 3  
 21 ft. weir  
 (See Tiered Skimmer  
 Basin Detail)  
 ID 7.3

2@72 x 12 x 3  
 ID 7.2

Place Matting for Erosion Control  
 on Slope as Work Allows.  
 Sta. 905+50 to Sta. 909+75 -L- LT  
 Sta. 24+50 to Sta. 26+75 -SR7- LT  
 Sta. 17+75 to Sta. 17+80 -Y42RPD- LT

For Slopes Excavated Greater Than 10 feet  
 Install Matting for Erosion Control on  
 Entire Slope as Work Allows.

3/27/2023  
 R2707E-EC.dsn\_psh\_27\_fg.dgn  
 mcdonald