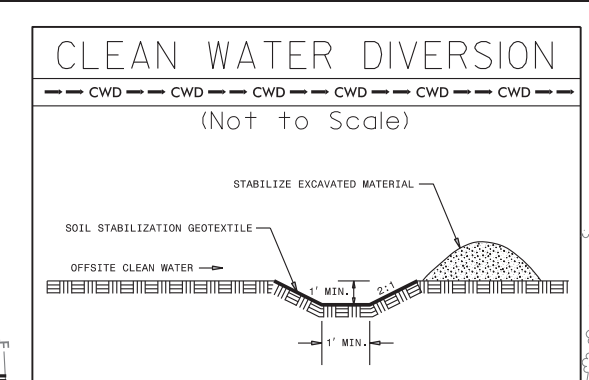
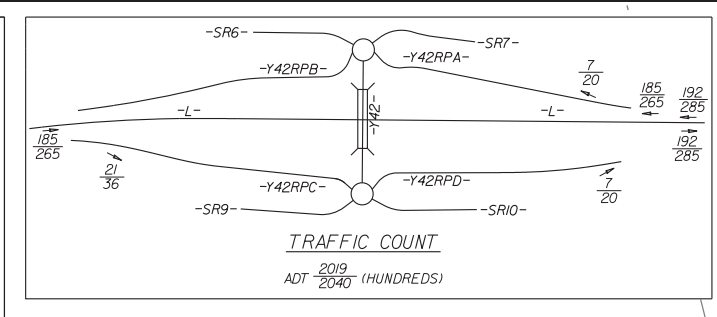
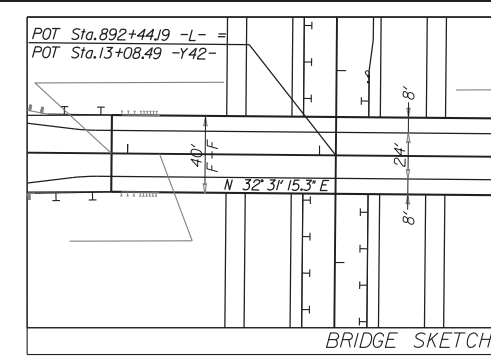


REVISIONS

S/22/19/RW REVISION NLS - UPDATED SURVEY FILE FOR PARCEL 085 TO SHOW A SINGLE PARCEL BY REMOVING THE SMALLER PARCEL WITHIN THE LARGER PROPERTY BOUNDARY. ADJUSTED PUE ON PARCEL 094/100 TO PARCEL 640.

Place Matting for Erosion Control on Slope as Work Allows.

Sta. 10+12 to Sta. 10+35 -PVENT1- LT	Sta. 21+50 to Sta. 22+50 -SR7- LT
Sta. 10+12 to Sta. 10+05 -PVENT1- RT	Sta. 13+65 to Sta. 14+50 -SR9- RT
Sta. 10+12 to Sta. 10+65 -PVENT3- LT	Sta. 16+24 to Sta. 21+59 -SR9- RT
Sta. 10+12 to Sta. 10+00 -PVENT3- RT	Sta. 10+00 to Sta. 14+35 -SR10- RT
Sta. 10+12 to Sta. 10+35 -PVENT3- LT	Sta. 12+85 to Sta. 17+40 -Y41- LT
Sta. 11+02 to Sta. 11+95 -RAB1- RT	Sta. 15+50 to Sta. 17+00 -Y41- RT
Sta. 22+55 to Sta. 23+00 -SR6- LT	Sta. 22+00 to Sta. 23+50 -Y42RPA- RT
Sta. 23+50 to Sta. 26+85 -SR6- LT	Sta. 17+75 to Sta. 17+80 -Y42RPD- LT
Sta. 27+40 to Sta. 30+12 -SR6- RT	Sta. 22+25 to Sta. 23+00 -Y42RPD- RT
Sta. 11+00 to Sta. 12+64 -SR6- LT	Sta. 10+50 to Sta. 11+85 -Y43- LT
Sta. 15+20 to Sta. 15+20 -SR7- LT	Sta. 10+50 to Sta. 12+15 -Y43- RT

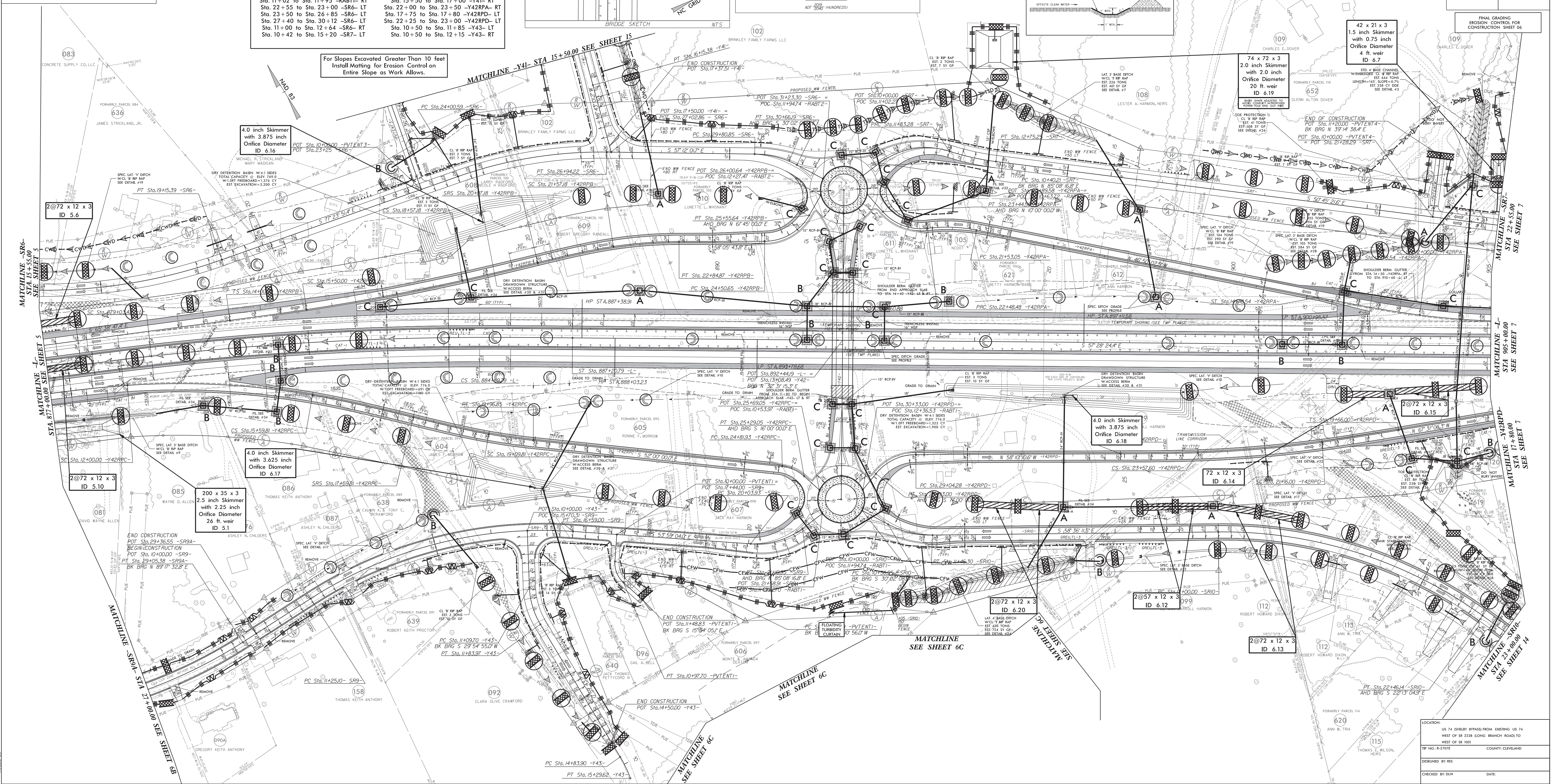


Stantec

Stantec Consulting Services Inc.
801 Jones Franklin Road
Suite 300
Raleigh, NC 27606
Tel: 919.561.4886
Fax: 919.561.7024
License No. F-0672

PROJECT REFERENCE NO. **R-2707E**
ROADWAY DESIGN ENGINEER
HYDRAULICS ENGINEER

SHEET NO. **EC-22/CONSTR**



LOCATION: US 74 (SHEET BYPASS) FROM EXISTING US 74 WEST OF SR 2228 (SHEET BRANCH ROAD) TO WEST OF SR 1001

COUNTY: CLEVELAND

DESIGNED BY: RES

CHECKED BY: BLW

DATE: