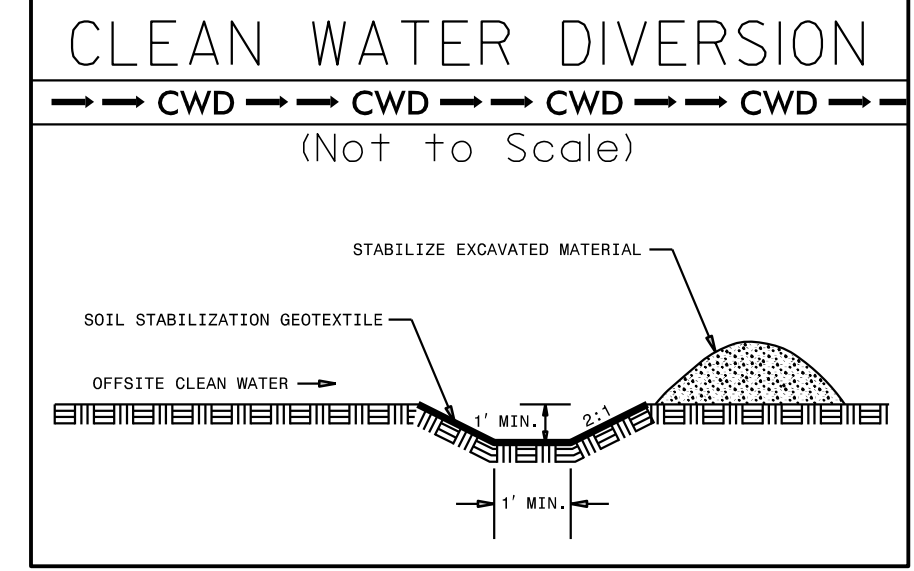


Stantec
 Stantec Consulting Services Inc.
 801 Jones Franklin Road
 Suite 300
 Raleigh, NC 27606
 Tel. (919) 851-6866
 Fax. (919) 851-7024
 www.stantec.com
 License No. F-0672

PROJECT REFERENCE NO.	SHEET NO.
R-2707E	EC-19/CONST J5
RW SHEET NO.	
ROADWAY DESIGN ENGINEER	HYDRAULICS ENGINEER

CLEARING AND GRUBBING
 EROSION CONTROL FOR
 CONSTRUCTION SHEET 15



128 x 64 x 3
 2.5 inch Skimmer
 with 2.5 inch
 Orifice Diameter
 32 ft. weir
 ID 6.1

FORMERLY
 PARCEL 188
 637
 MICHAEL R. STRICKLAND
 MARY MADIGAN

LYNDA SUE HERNDON

608
 FORMERLY PARCEL 100
 LARRY RADFORD
 NICOLE H. RADFORD

102
 BRINKLEY FAMILY FARMS LLC

102
 BRINKLEY FAMILY FARMS LLC

BEGIN CONSTRUCTION
 POC Sta. 10+00.00 -Y4I-

SPEC. LAT. 2' BASE DITCH
 W/CL 'B' RIP RAP
 EST. 149 TONS
 EST. 406 SY GF
 SEE DETAIL #28

LAT. 2' BASE DITCH
 W/CL 'B' RIP RAP
 EST. 302 TONS
 EST. 820 SY GF
 SEE DETAIL #23

MATCHLINE -Y4I- STA 15+50.00 SEE SHEET 6

NOTE:
 PLACE TEMPORARY ROCK SEDIMENT DAMS TYPE - B
 AND TEMPORARY ROCK SILT CHECKS TYPE - A AT
 DRAINAGE OUTLETS.

NAD 83/95

886.00'
 N75°17'26"E