

PROJECT REFERENCE NO. <i>R-2707E</i>	SHEET NO. <i>EC-14/CONST.10</i>
RW SHEET NO.	
ROADWAY DESIGN ENGINEER	HYDRAULICS ENGINEER

GARRET STEVEN DURBIN

**40 x 72 x 3
 1.5 inch Skimmer
 with 1.5 inch
 Orifice Diameter
 11 ft. weir
 ID 10.1**

**47 x 110 x 3
 2.0 inch Skimmer
 with 2.0 inch
 Orifice Diameter
 20 ft. weir
 ID 10.2**

CLEARING AND GRUBBING
 EROSION CONTROL FOR
 CONSTRUCTION SHEET 10

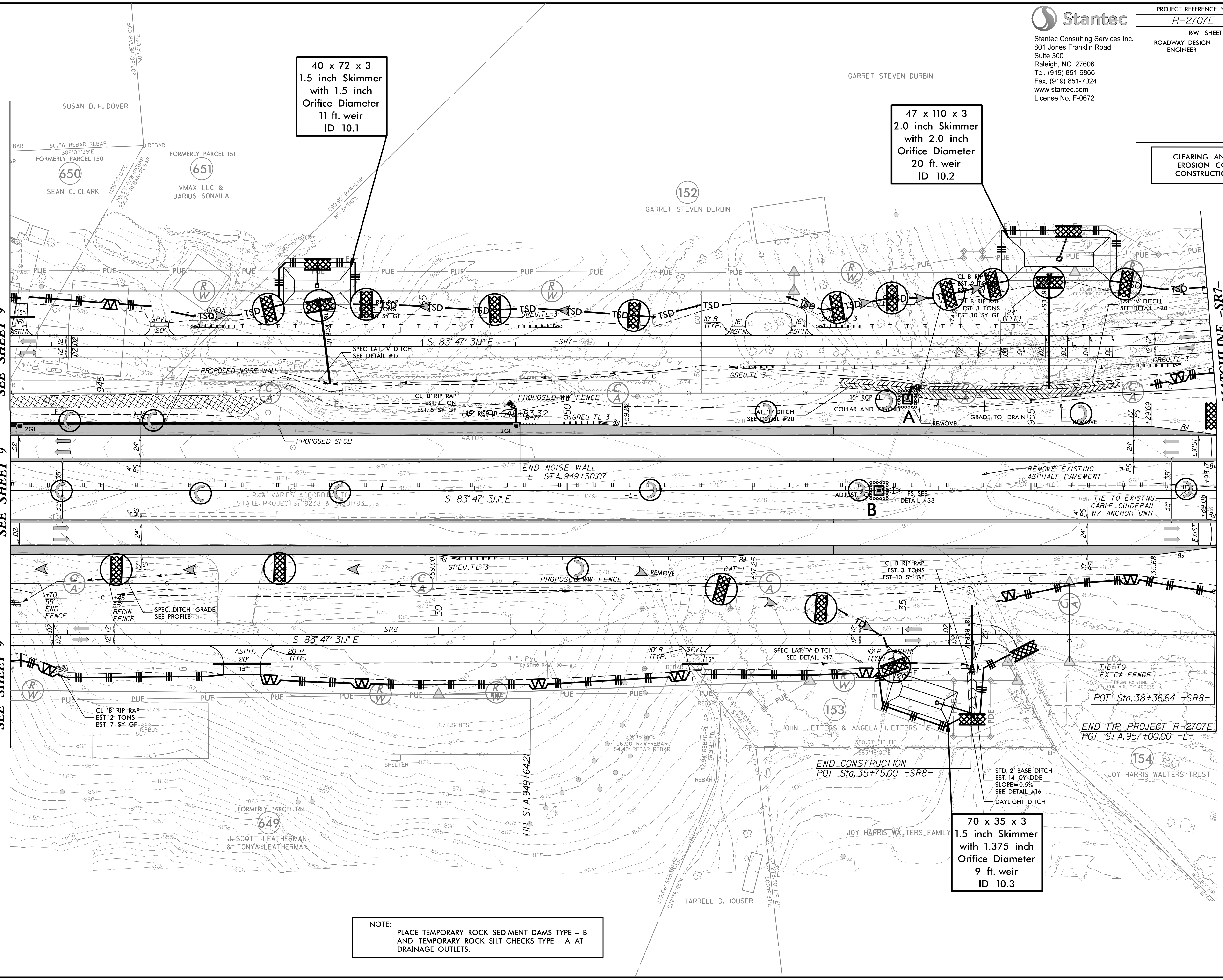
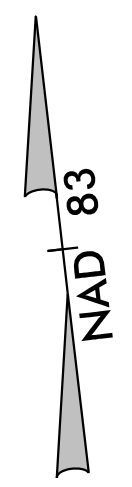
MATCHLINE -SR7-
 STA 60+55.00
 SEE SHEET 9

MATCHLINE -L-
 STA 944+00.00
 SEE SHEET 9

MATCHLINE -SR8-
 STA 25+30.58
 SEE SHEET 9

MATCHLINE -SR7-
 STA 73+50.00
 SEE SHEET 11

MATCHLINE -L-
 STA 957+00.00
 SEE SHEET 11



NOTE:
 PLACE TEMPORARY ROCK SEDIMENT DAMS TYPE - B
 AND TEMPORARY ROCK SILT CHECKS TYPE - A AT
 DRAINAGE OUTLETS.

**70 x 35 x 3
 1.5 inch Skimmer
 with 1.375 inch
 Orifice Diameter
 9 ft. weir
 ID 10.3**

END TIP PROJECT R-2707E
 POT STA. 957+00.00 -L-

END CONSTRUCTION
 POT Sta. 35+75.00 -SR8-

POT Sta. 38+36.64 -SR8-