

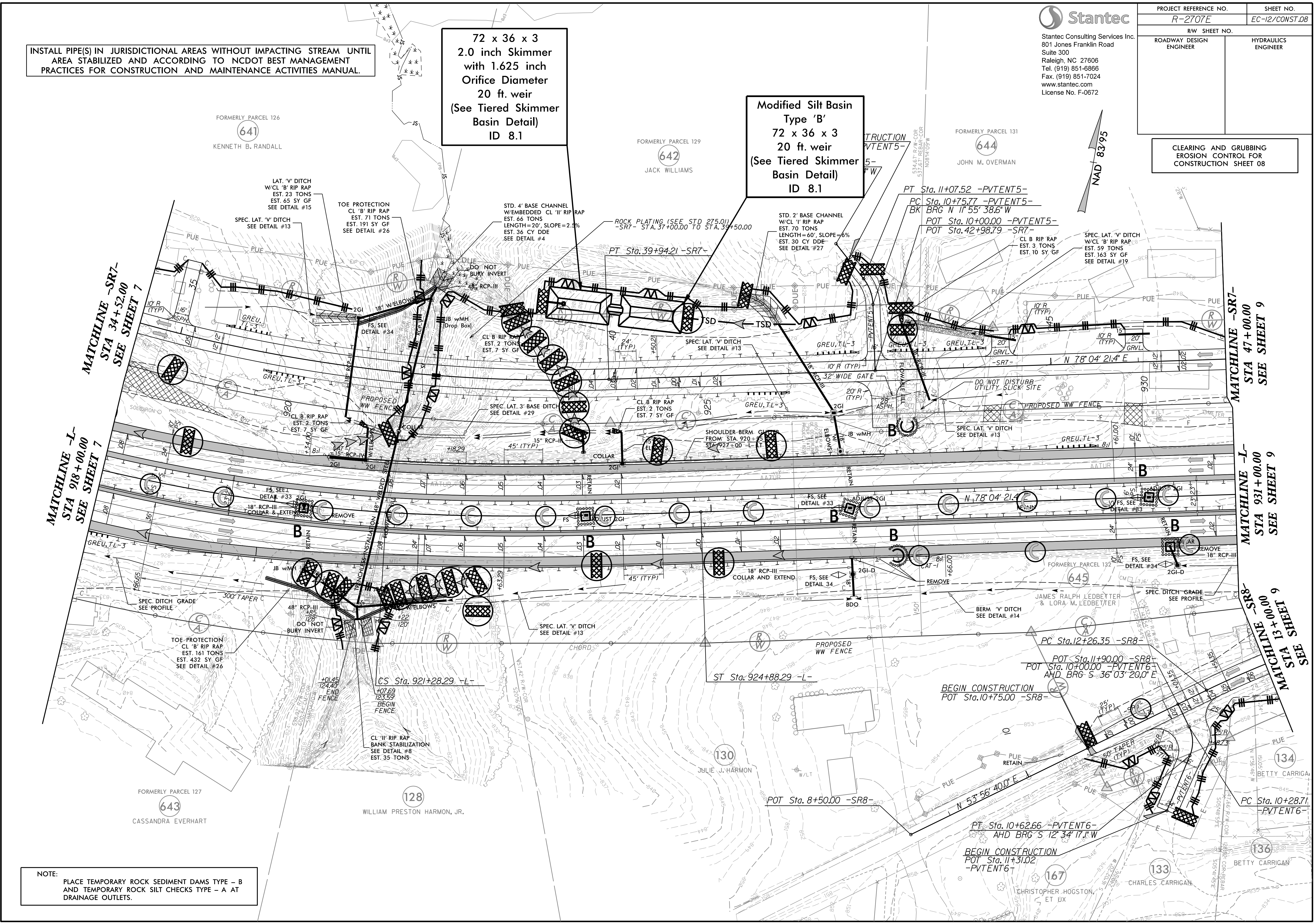
PROJECT REFERENCE NO. <i>R-2707E</i>	SHEET NO. <i>EC-12/CONST.08</i>
RW SHEET NO.	
ROADWAY DESIGN ENGINEER	HYDRAULICS ENGINEER

CLEARING AND GRUBBING
 EROSION CONTROL FOR
 CONSTRUCTION SHEET 08

INSTALL PIPE(S) IN JURISDICTIONAL AREAS WITHOUT IMPACTING STREAM UNTIL AREA STABILIZED AND ACCORDING TO NCDOT BEST MANAGEMENT PRACTICES FOR CONSTRUCTION AND MAINTENANCE ACTIVITIES MANUAL.

72 x 36 x 3
 2.0 inch Skimmer
 with 1.625 inch
 Orifice Diameter
 20 ft. weir
 (See Tiered Skimmer
 Basin Detail)
 ID 8.1

Modified Silt Basin
 Type 'B'
 72 x 36 x 3
 20 ft. weir
 (See Tiered Skimmer
 Basin Detail)
 ID 8.1



MATCHLINE -L-
 STA 918+00.00
 SEE SHEET 7

MATCHLINE -SR7-
 STA 34+52.00
 SEE SHEET 7

MATCHLINE -SR7-
 STA 47+00.00
 SEE SHEET 9

MATCHLINE -L-
 STA 931+00.00
 SEE SHEET 9

MATCHLINE -SR8-
 STA 13+00.00
 SEE SHEET 9

NOTE:
 PLACE TEMPORARY ROCK SEDIMENT DAMS TYPE - B
 AND TEMPORARY ROCK SILT CHECKS TYPE - A AT
 DRAINAGE OUTLETS.

FORMERLY PARCEL 126
 (641)
 KENNETH B. RANDALL

FORMERLY PARCEL 129
 (642)
 JACK WILLIAMS

FORMERLY PARCEL 131
 (644)
 JOHN M. OVERMAN

FORMERLY PARCEL 127
 (643)
 CASSANDRA EVERHART

(128)
 WILLIAM PRESTON HARMON, JR.

(130)
 JULIE J. HARMON

(134)
 BETTY CARRIGAN

(136)
 BETTY CARRIGAN

(133)
 CHARLES CARRIGAN

(167)
 CHRISTOPHER HOGSTON,
 ET UX