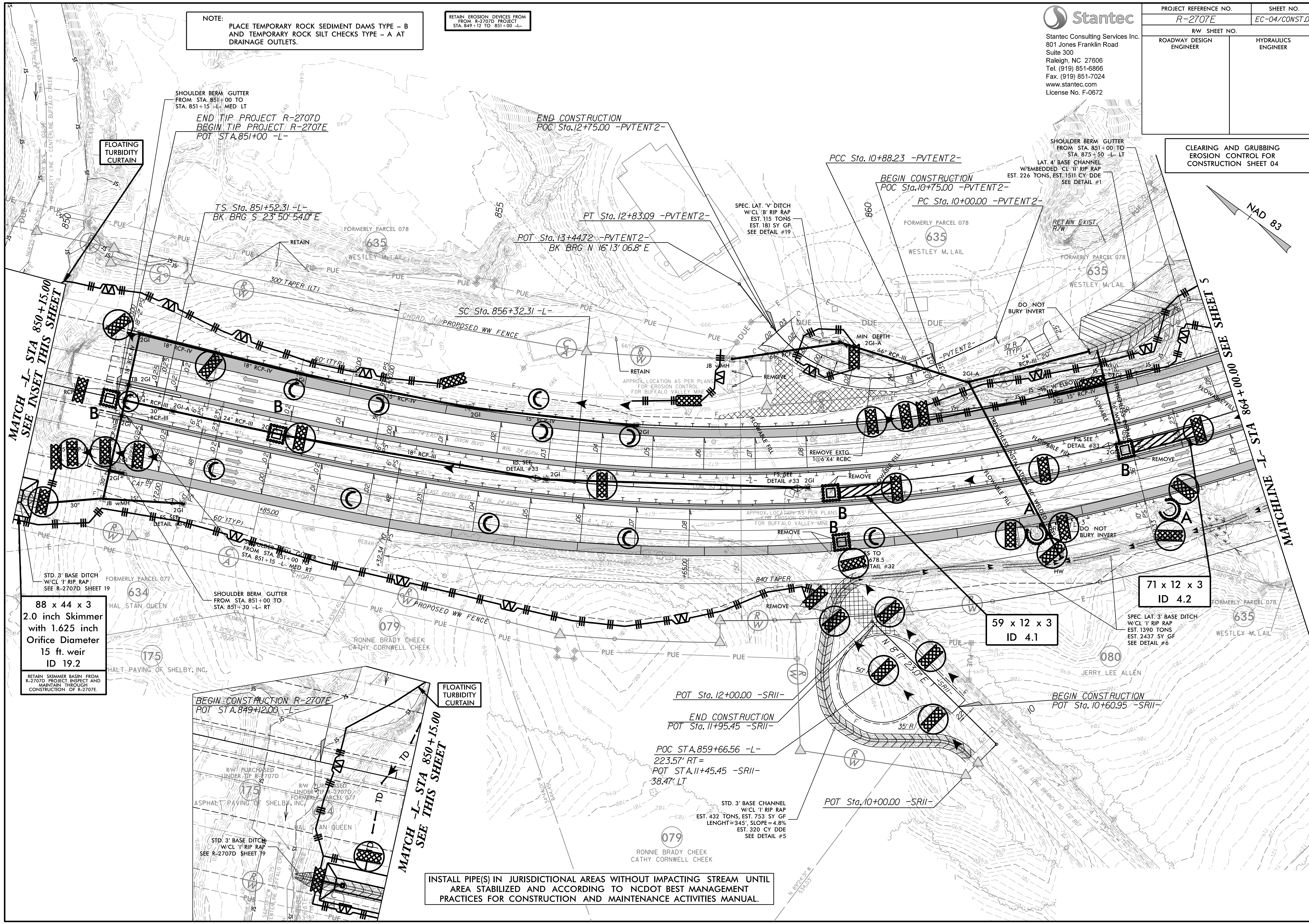


PROJECT REFERENCE NO. <i>R-2707E</i>	SHEET NO. <i>EC-04/CONST.04</i>
RW SHEET NO.	
ROADWAY DESIGN ENGINEER	HYDRAULICS ENGINEER

NOTE: PLACE TEMPORARY ROCK SEDIMENT DAMS TYPE - B AND TEMPORARY ROCK SILT CHECKS TYPE - A AT DRAINAGE OUTLETS.

RETAIN EROSION DEVICES FROM FROM R-2707D PROJECT STA. 849+12 TO 851+00 -L-



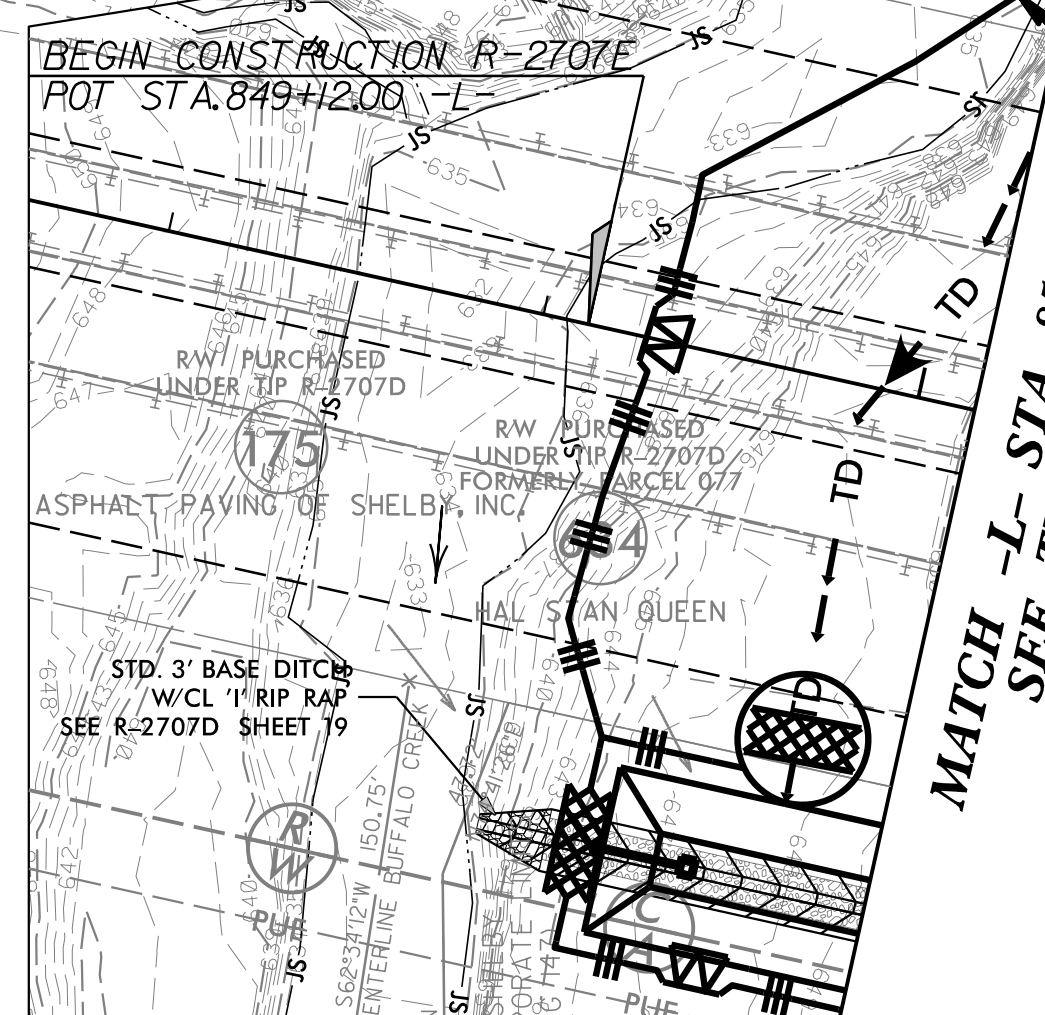
MATCH -L- STA 850+15.00 SEE INSET THIS SHEET

MATCHLINE -L- STA 10+00.00+1498.98 SEE SHEET 5

88 x 44 x 3  
 2.0 inch Skimmer  
 with 1.625 inch  
 Orifice Diameter  
 15 ft. weir  
 ID 19.2

59 x 12 x 3  
 ID 4.1

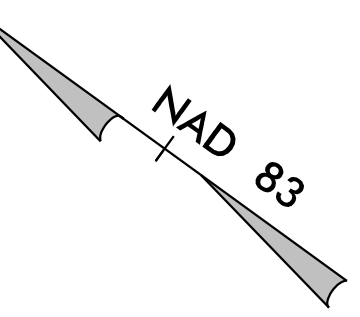
71 x 12 x 3  
 ID 4.2



MATCH -L- STA 850+15.00 SEE THIS SHEET

INSTALL PIPE(S) IN JURISDICTIONAL AREAS WITHOUT IMPACTING STREAM UNTIL AREA STABILIZED AND ACCORDING TO NCDOT BEST MANAGEMENT PRACTICES FOR CONSTRUCTION AND MAINTENANCE ACTIVITIES MANUAL.

CLEARING AND GRUBBING EROSION CONTROL FOR CONSTRUCTION SHEET 04



STD. 3' BASE CHANNEL  
 W/CL 1' RIP RAP  
 EST. 432 TONS, EST. 753 SY GF  
 LENGTH=345', SLOPE=4.8%  
 EST. 320 CY DDE  
 SEE DETAIL #5

SHOULDER BERM GUTTER  
 FROM STA. 851+00 TO  
 STA. 875+50 -L- LT  
 LAT. 4' BASE CHANNEL  
 W/EMBEDDED 'CL' 1' RIP RAP  
 EST. 226 TONS, EST. 1511 CY DDE  
 SEE DETAIL #1

SHOULDER BERM GUTTER  
 FROM STA. 851+00 TO  
 STA. 851+15 -L- MED LT  
 END TIP PROJECT R-2707D  
 BEGIN TIP PROJECT R-2707E  
 POT STA. 851+00 -L-

END CONSTRUCTION  
 POC Sta. 12+75.00 -PVTENT2-

BEGIN CONSTRUCTION  
 POC Sta. 10+75.00 -PVTENT2-  
 PC Sta. 10+00.00 -PVTENT2-

POT Sta. 12+00.00 -SR11-  
 END CONSTRUCTION  
 POT Sta. 11+95.45 -SR11-

POC STA. 859+66.56 -L-  
 223.57' RT=  
 POT STA. 11+45.45 -SR11-  
 38.47' LT

BEGIN CONSTRUCTION  
 POT Sta. 10+60.95 -SR11-

POT Sta. 10+00.00 -SR11-