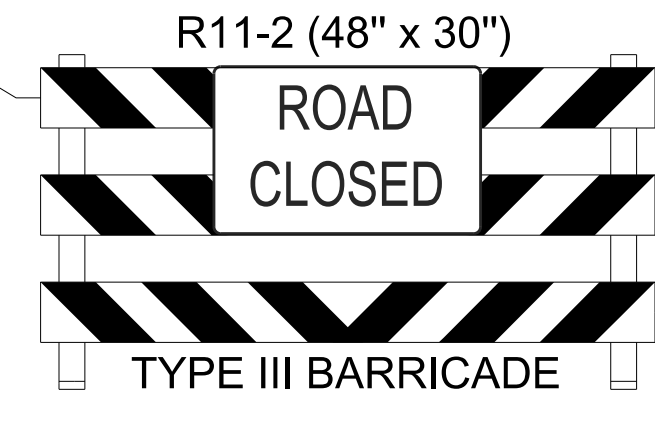
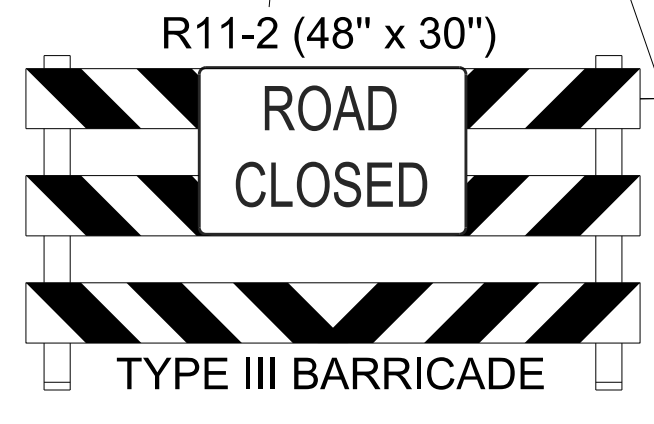
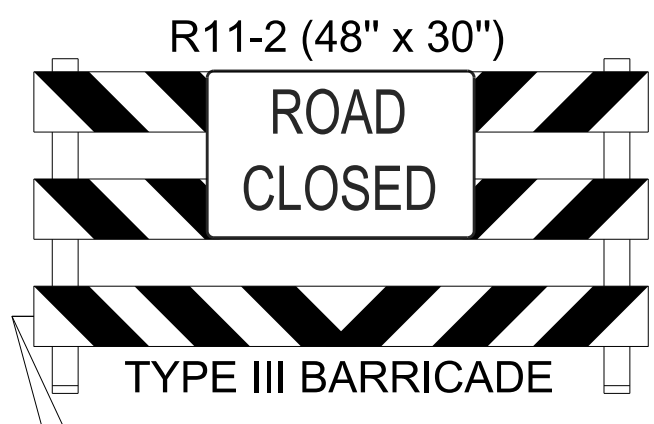
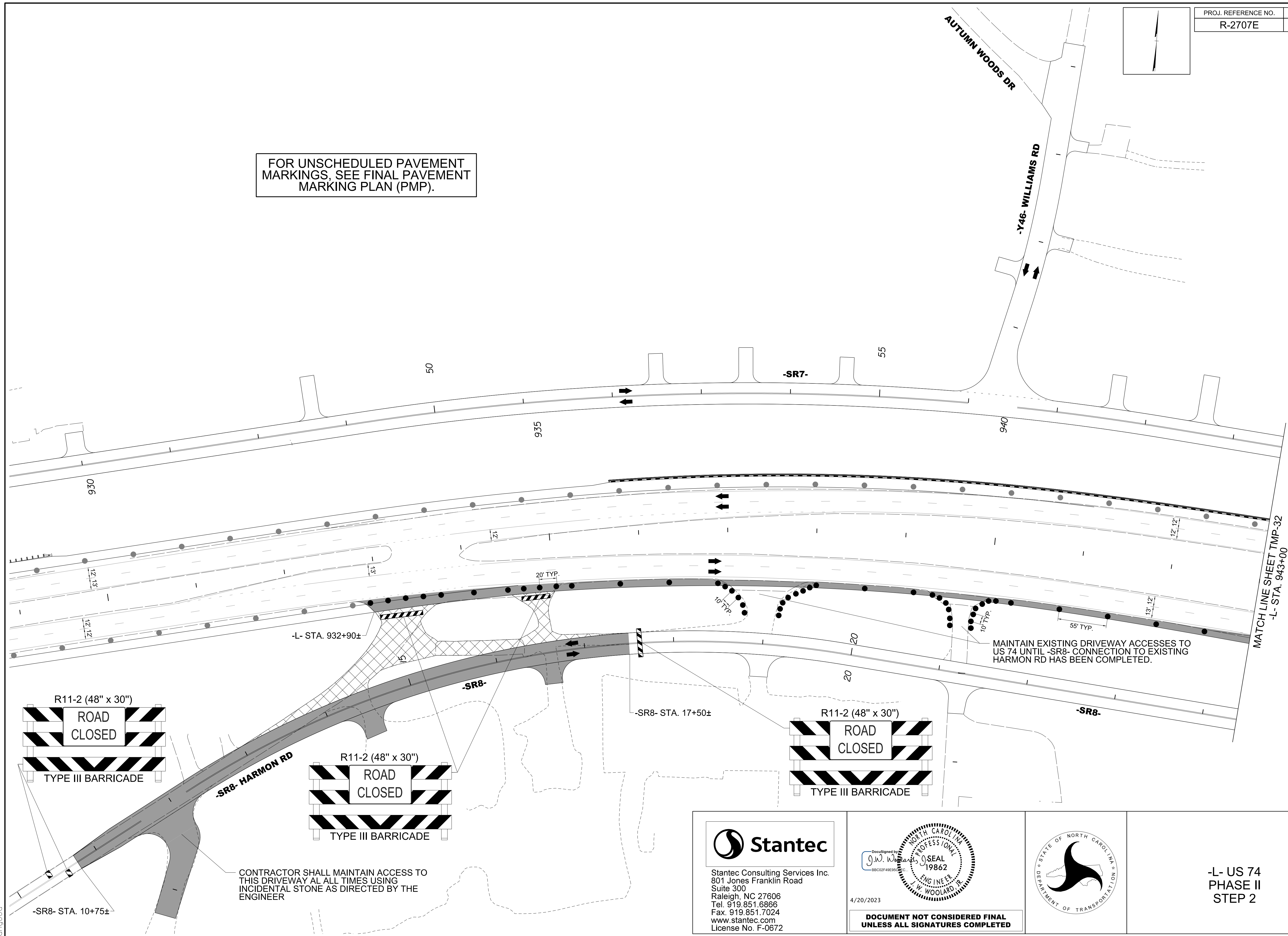


FOR UNSCHEDULED PAVEMENT MARKINGS, SEE FINAL PAVEMENT MARKING PLAN (PMP).

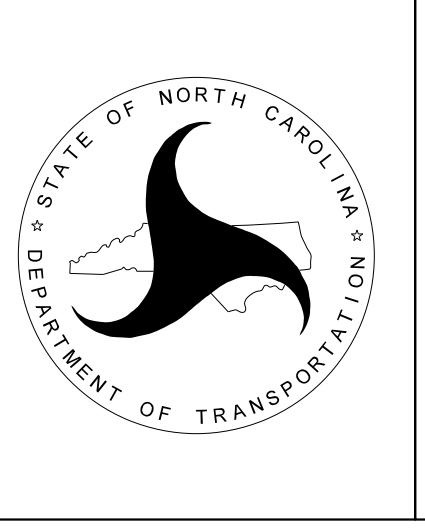


CONTRACTOR SHALL MAINTAIN ACCESS TO THIS DRIVEWAY AT ALL TIMES USING INCIDENTAL STONE AS DIRECTED BY THE ENGINEER

4/20/2023
c:\users\angood\pwworking\0105639\N-R-2707E-TMP-31_PHASE_02_STEP_02.dgn
angood

Stantec
 Stantec Consulting Services Inc.
 801 Jones Franklin Road
 Suite 300
 Raleigh, NC 27606
 Tel. 919.851.6866
 Fax. 919.851.7024
 www.stantec.com
 License No. F-0672

4/20/2023
 DOCUMENT NOT CONSIDERED FINAL
 UNLESS ALL SIGNATURES COMPLETED



-L- US 74
 PHASE II
 STEP 2