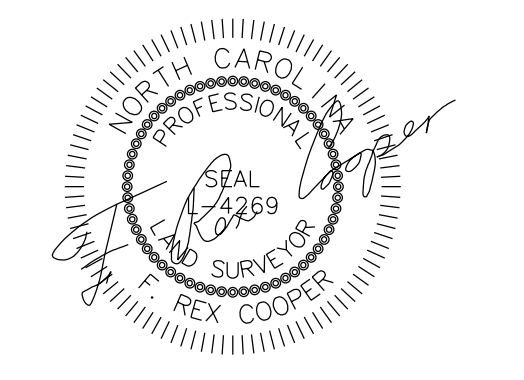
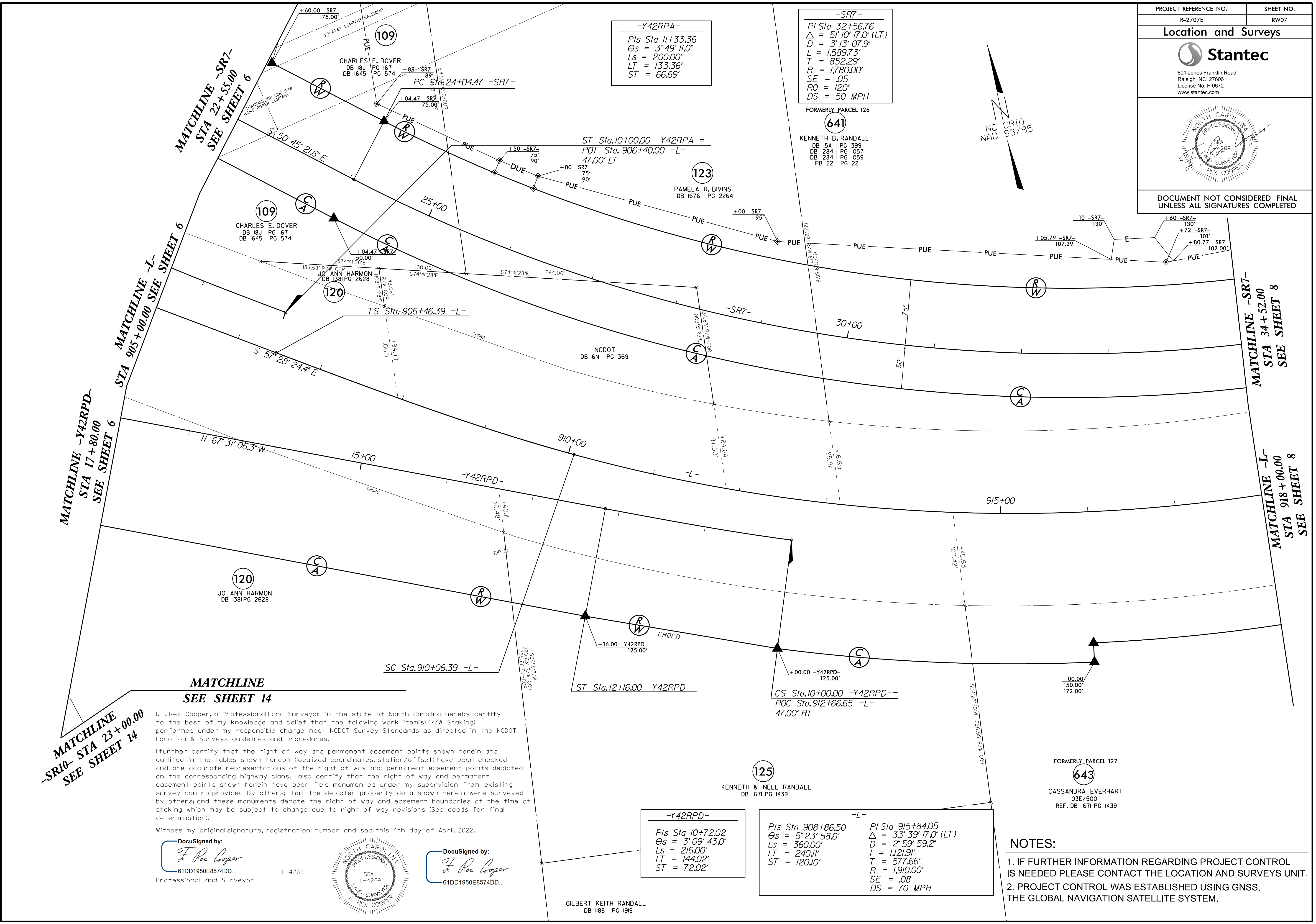


Location and Surveys



DOCUMENT NOT CONSIDERED FINAL UNLESS ALL SIGNATURES COMPLETED



-Y42RPA-
 Pls Sta 11+33.36
 $\Theta_s = 3^\circ 49' 11.0''$
 $L_s = 200.00'$
 $LT = 133.36'$
 $ST = 66.69'$

-SR7-
 Pls Sta 32+56.76
 $\Delta = 5^\circ 10' 17.0'' (LT)$
 $D = 3^\circ 13' 07.9''$
 $L = 1,589.73'$
 $T = 852.29'$
 $R = 1,780.00'$
 $SE = .05$
 $RO = 120'$
 $DS = 50 MPH$

-Y42RPD-
 Pls Sta 10+72.02
 $\Theta_s = 3^\circ 09' 43.0''$
 $L_s = 216.00'$
 $LT = 144.02'$
 $ST = 72.02'$

-L-
 Pls Sta 908+86.50
 $\Theta_s = 5^\circ 23' 58.6''$
 $L_s = 360.00'$
 $LT = 240.11'$
 $ST = 120.10'$

Pls Sta 915+84.05
 $\Delta = 3^\circ 39' 17.0'' (LT)$
 $D = 2^\circ 59' 59.2''$
 $L = 1,121.91'$
 $T = 577.66'$
 $R = 1,910.00'$
 $SE = .08$
 $DS = 70 MPH$

MATCHLINE -SR10- STA 23+00.00 SEE SHEET 14

MATCHLINE -Y42RPD- STA 17+80.00 SEE SHEET 6

MATCHLINE -L- STA 905+00.00 SEE SHEET 6

MATCHLINE -SR7- STA 22+55.00 SEE SHEET 6

MATCHLINE -SR7- STA 34+52.00 SEE SHEET 8

MATCHLINE -L- STA 918+00.00 SEE SHEET 8

MATCHLINE SEE SHEET 14

I, F. Rex Cooper, a Professional Land Surveyor in the state of North Carolina hereby certify to the best of my knowledge and belief that the following work item(s) (R/W Staking) performed under my responsible charge meet NCDOT Survey Standards as directed in the NCDOT Location & Surveys guidelines and procedures.

I further certify that the right of way and permanent easement points shown herein and outlined in the tables shown hereon (localized coordinates, station/offset) have been checked and are accurate representations of the right of way and permanent easement points depicted on the corresponding highway plans. I also certify that the right of way and permanent easement points shown herein have been field monumented under my supervision from existing survey control provided by others; that the depicted property data shown herein were surveyed by others; and these monuments denote the right of way and easement boundaries at the time of staking which may be subject to change due to right of way revisions (See deeds for final determination).

Witness my original signature, registration number and seal this 4th day of April, 2022.

DocuSigned by:
 F. Rex Cooper
 61DD1950E8574DD... L-4269
 Professional Land Surveyor



DocuSigned by:
 F. Rex Cooper
 61DD1950E8574DD...

GILBERT KEITH RANDALL
 DB 1188 PG 1919

FORMERLY PARCEL 127
 643
 CASSANDRA EVERHART
 03E/500
 REF. DB 1671 PG 1439

- NOTES:**
1. IF FURTHER INFORMATION REGARDING PROJECT CONTROL IS NEEDED PLEASE CONTACT THE LOCATION AND SURVEYS UNIT.
 2. PROJECT CONTROL WAS ESTABLISHED USING GNSS, THE GLOBAL NAVIGATION SATELLITE SYSTEM.

REVISIONS

6/2/22