

5/28/24

-SR7-

PIPE HYDRAULIC DATA
18" CSP Sta. 71+75 -SR7-

DRAINAGE AREA	= 2.0	AC
DESIGN FREQUENCY	= 25	YRS
DESIGN DISCHARGE	= 6.0	CFS
DESIGN HW ELEVATION	= 864.1	FT
100 YEAR DISCHARGE	= 7.0	CFS
100 YEAR HW ELEVATION	= 864.3	FT
OVERTOPPING FREQUENCY	= 500 +	YRS
OVERTOPPING DISCHARGE	= 8 +	CFS
OVERTOPPING ELEVATION	= 868.5	FT

Stantec
Stantec Consulting Services Inc.
801 Jones Franklin Road
Suite 300
Raleigh, NC 27606
Tel. (919) 851-6866
Fax. (919) 851-7024
www.stantec.com
License No. F-0672

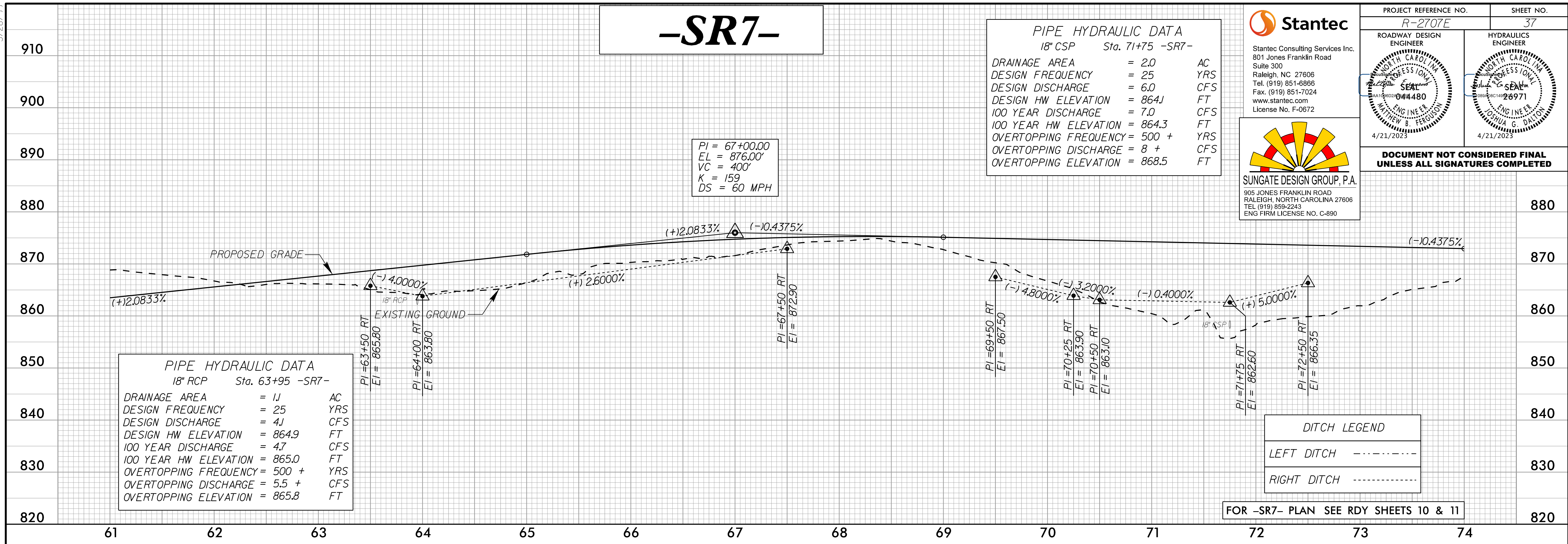
PROJECT REFERENCE NO. R-2707E	SHEET NO. 37
ROADWAY DESIGN ENGINEER MATTHEW B. FERGLIO 4/21/2023	HYDRAULICS ENGINEER JOHN G. DALTON 4/21/2023

SUNGATE DESIGN GROUP, P.A.
905 JONES FRANKLIN ROAD
RALEIGH, NORTH CAROLINA 27606
TEL (919) 859-2243
ENG FIRM LICENSE NO. C-890

PI = 67+00.00
EL = 876.00'
VC = 400'
K = 159
DS = 60 MPH

PIPE HYDRAULIC DATA
18" RCP Sta. 63+95 -SR7-

DRAINAGE AREA	= 11	AC
DESIGN FREQUENCY	= 25	YRS
DESIGN DISCHARGE	= 41	CFS
DESIGN HW ELEVATION	= 864.9	FT
100 YEAR DISCHARGE	= 4.7	CFS
100 YEAR HW ELEVATION	= 865.0	FT
OVERTOPPING FREQUENCY	= 500 +	YRS
OVERTOPPING DISCHARGE	= 5.5 +	CFS
OVERTOPPING ELEVATION	= 865.8	FT



DITCH LEGEND

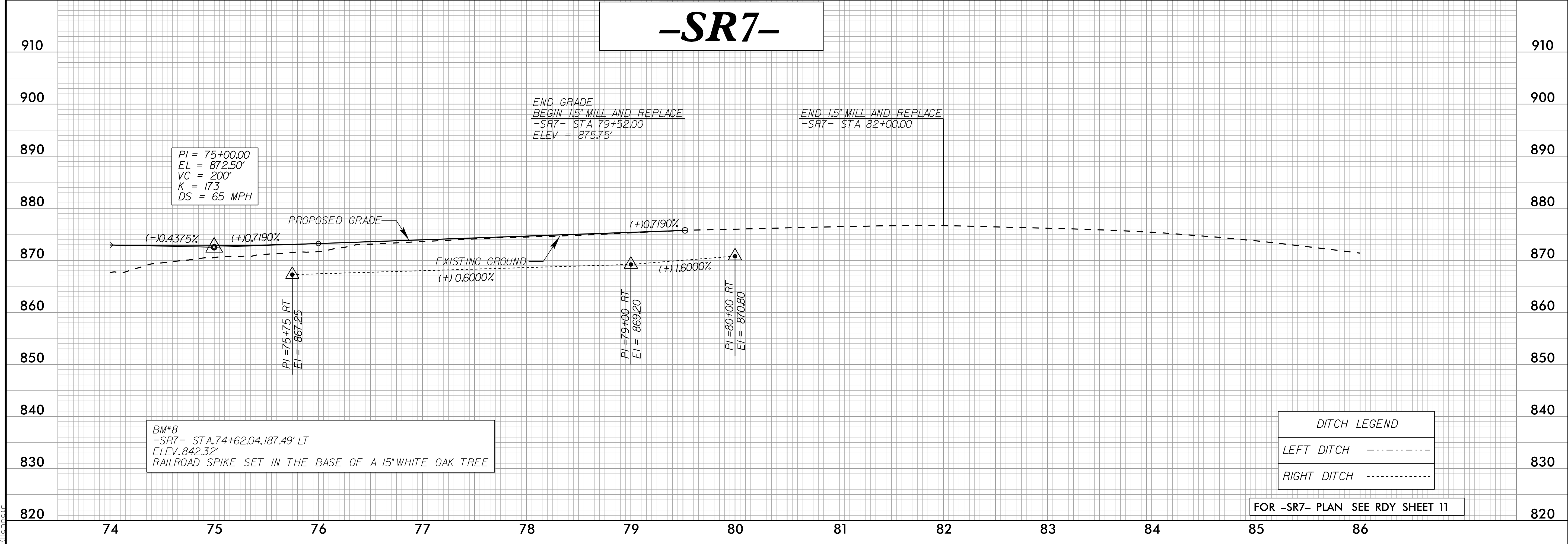
LEFT DITCH - - - - -

RIGHT DITCH - - - - -

-SR7-

PI = 75+00.00
EL = 872.50'
VC = 200'
K = 173
DS = 65 MPH

BM*8
-SR7- STA. 74+62.04, 187.49' LT
ELEV. 842.32'
RAILROAD SPIKE SET IN THE BASE OF A 15" WHITE OAK TREE



DITCH LEGEND

LEFT DITCH - - - - -

RIGHT DITCH - - - - -

FOR -SR7- PLAN SEE RDY SHEET 11

3/30/2023
37130_001.dwg
37130_001.dwg
43124\RDY\RDY_PFL_PSH.dgn
R:\Information