

5/28/23

-L_EB-

SUNGATE DESIGN GROUP, P.A.
 905 JONES FRANKLIN ROAD
 RALEIGH, NORTH CAROLINA 27606
 TEL (919) 859-2243
 ENG FIRM LICENSE NO. C-890

Stantec
 Stantec Consulting Services Inc.
 801 Jones Franklin Road
 Suite 300
 Raleigh, NC 27606
 Tel. (919) 851-6866
 Fax. (919) 851-7024
 www.stantec.com
 License No. F-0672

PROJECT REFERENCE NO. <i>R-2707E</i>	SHEET NO. <i>22</i>
ROADWAY DESIGN ENGINEER <i>Matthew S. Ferguson</i>	HYDRAULICS ENGINEER <i>John G. Dalton</i>
4/21/2023	4/21/2023

DOCUMENT NOT CONSIDERED FINAL UNLESS ALL SIGNATURES COMPLETED

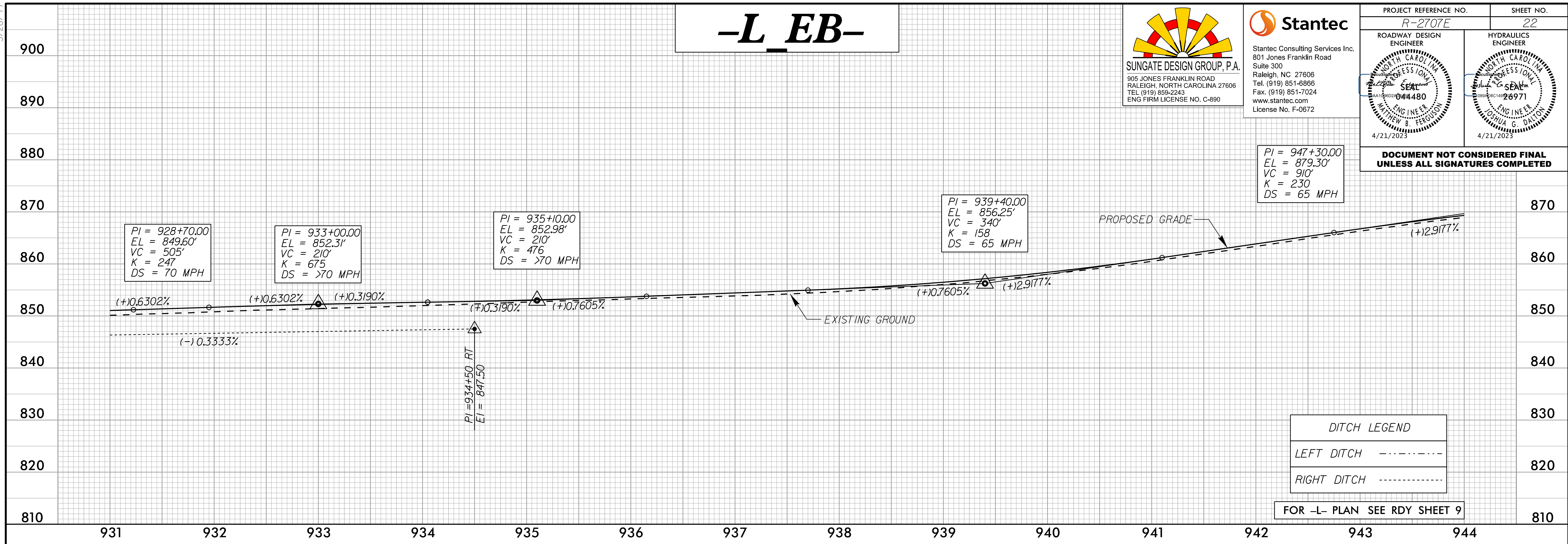
PI = 947+30.00
EL = 879.30'
VC = 910'
K = 230
DS = 65 MPH

PI = 939+40.00
EL = 856.25'
VC = 340'
K = 158
DS = 65 MPH

PI = 935+10.00
EL = 852.98'
VC = 210'
K = 476
DS = >70 MPH

PI = 933+00.00
EL = 852.31'
VC = 210'
K = 675
DS = >70 MPH

PI = 928+70.00
EL = 849.60'
VC = 505'
K = 247
DS = 70 MPH

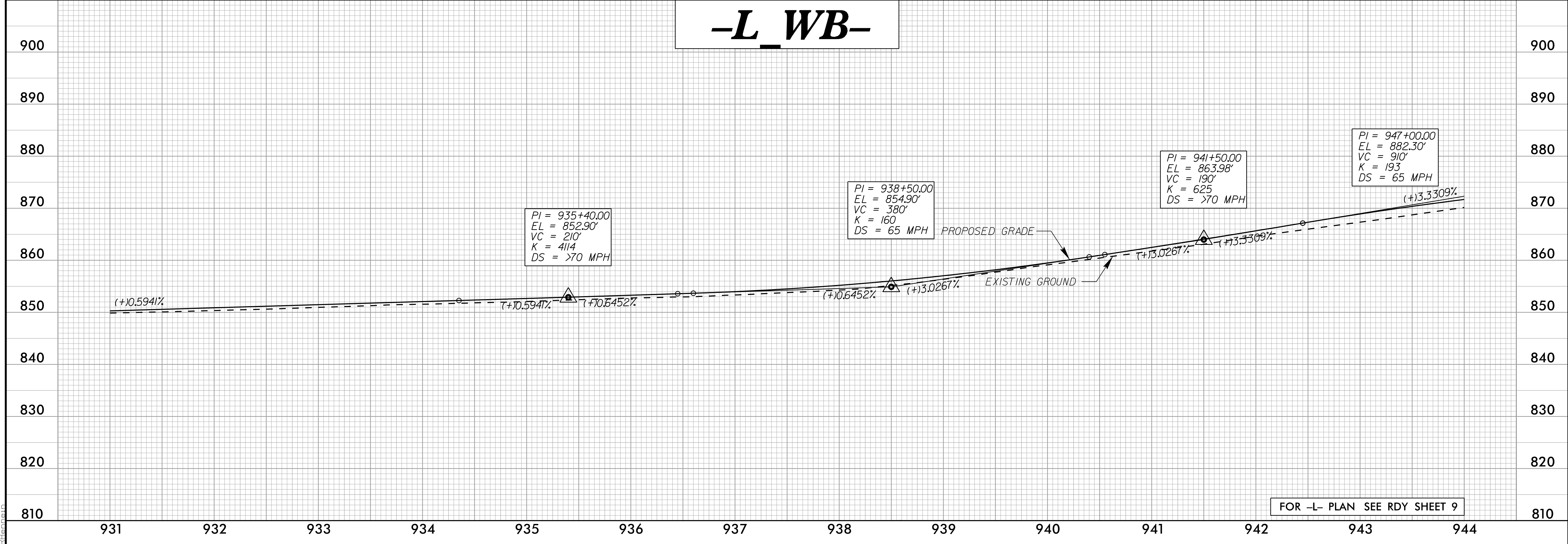


-L_WB-

PI = 938+50.00
EL = 854.90'
VC = 380'
K = 160
DS = 65 MPH

PI = 941+50.00
EL = 863.98'
VC = 190'
K = 625
DS = >70 MPH

PI = 947+00.00
EL = 882.30'
VC = 910'
K = 193
DS = 65 MPH



3/30/2023
37130_rdg.dwg
4:31:24
R2707E_RDY_PFL_PSH.dgn