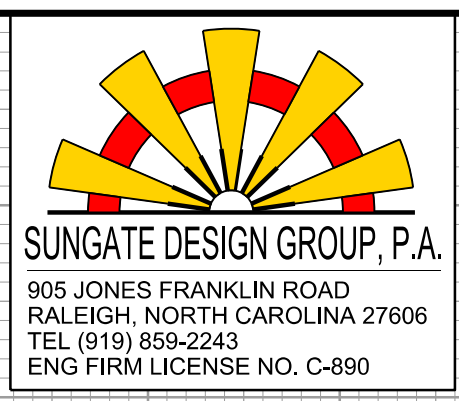


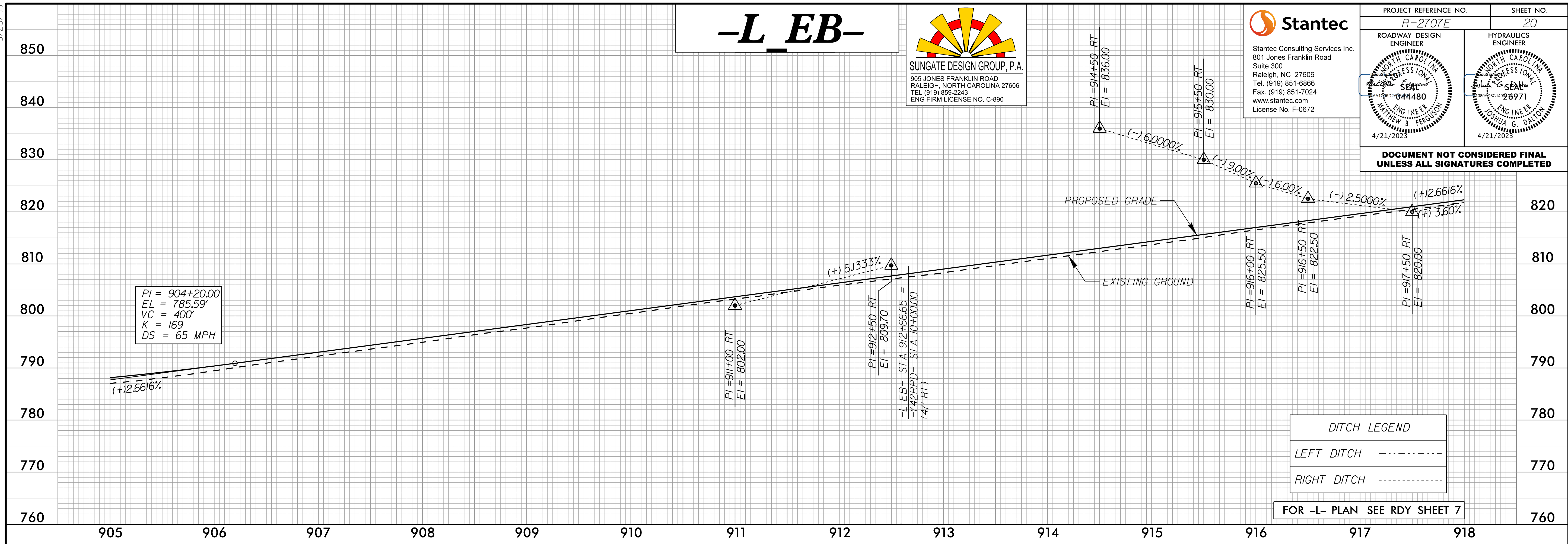
5/28/24

-L_EB-

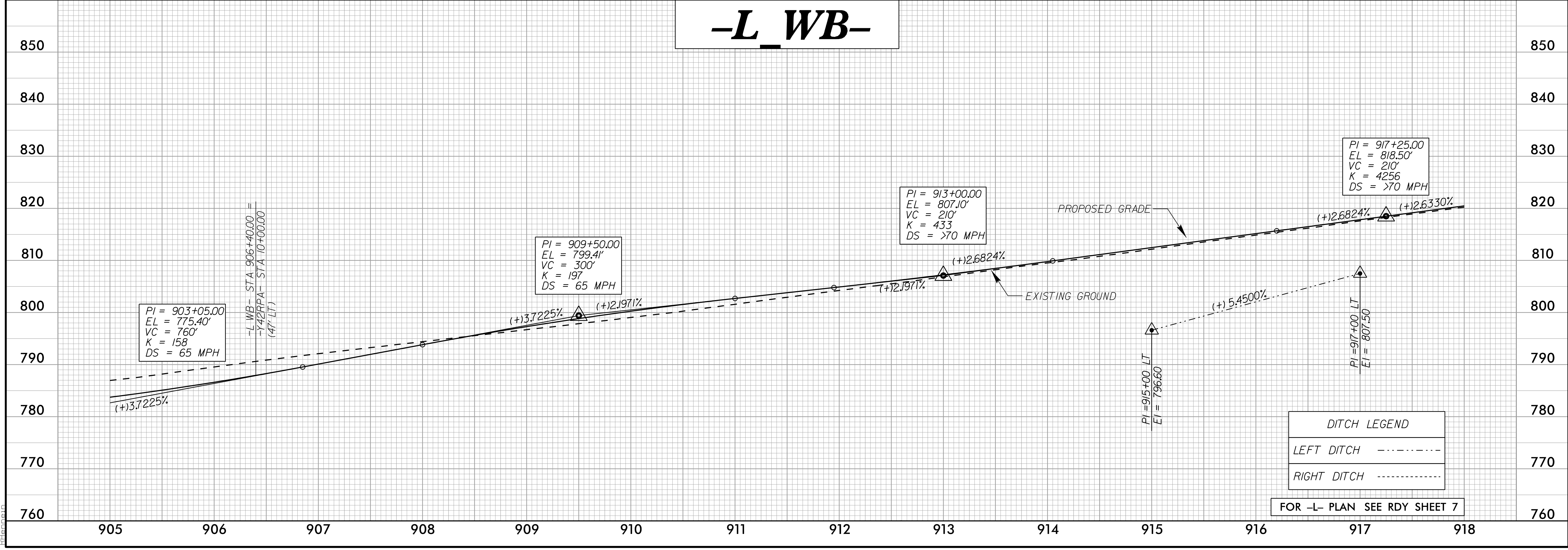


PROJECT REFERENCE NO. R-2707E	SHEET NO. 20
ROADWAY DESIGN ENGINEER SEAL MATTHEW B. FERRELL 4/21/2023	HYDRAULICS ENGINEER SEAL JOSHUA S. DALTON 4/21/2023

DOCUMENT NOT CONSIDERED FINAL UNLESS ALL SIGNATURES COMPLETED



-L_WB-



3/30/2023
 3713012023
 R:\mg\dm\43124\R2707E_RDY_PFL_PSH.dgn
 R:\mg\dm\43124\R2707E_RDY_PFL_PSH.dgn